

BASIS OF BEARINGS
FIELD PLAT
CATFISH ADDITION
(CABINET A, PAGE 270, M.R.R.C.T.)

LEGEND

- B.L.A. BOUNDARY LINE AGREEMENT (VOL. 231, PG. 186)
- D.R.R.C.T. Deed Records, Rockwall County, Texas
- I.R.F. IRON ROD FOUND
- I.R.S. IRON ROD SET
- I.R.W.C.F. IRON ROD w/CAP FOUND "LYN DAVIS R.P.L.S. 1160"
- M.R.R.C.T. Map Records, Rockwall County, Texas
- NO. NUMBER

STATE PLANE COORDINATES

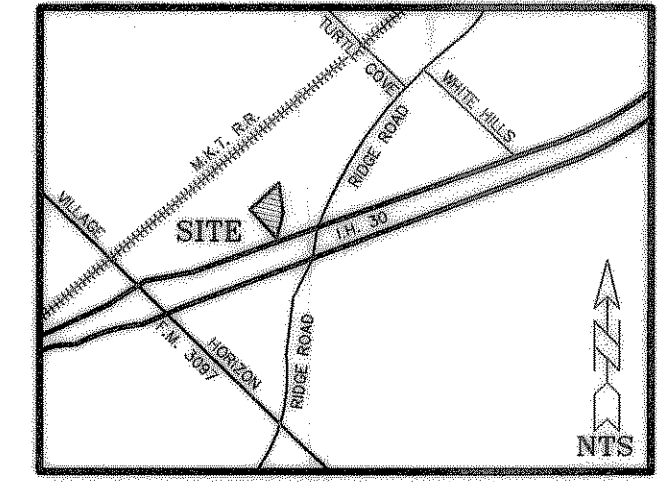
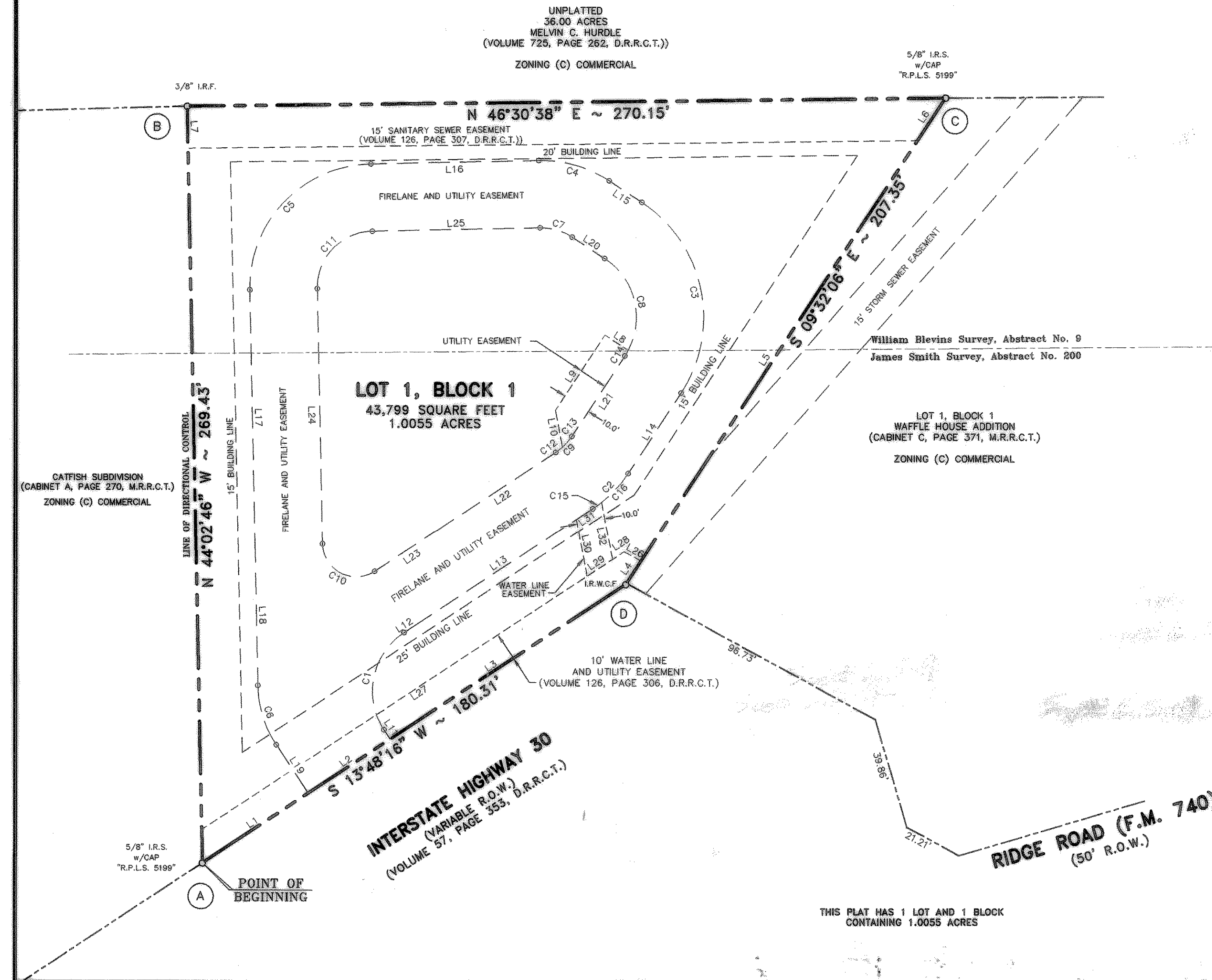
BASIS FOR STATE PLANE COORDINATES CITY OF ROCKWALL MONUMENTS No. 5 AND 7		
	"Y"	"X"
(A)	7015598.6654	2591439.1599
(B)	7015790.0297	2591249.4915
(C)	7015978.3319	2591443.2056
(D)	7015774.2807	2591480.0447

EASEMENT CURVE DATA

NUMBER	DELTA	RADIUS	LENGTH	CHORD BEARING	CHORD
C1	90°00'00"	25.00	39.27	N 31°11'44" W	35.36
C2	23°20'22"	44.00	17.92	N 02°08'05" E	17.80
C3	90°00'00"	49.00	76.97	N 54°32'06" W	69.30
C4	34°30'40"	44.00	26.50	S 63°12'34" W	26.10
C5	90°00'00"	44.00	69.12	S 00°57'14" W	62.23
C6	32°08'58"	40.00	22.44	S 60°07'15" E	22.15
C7	34°30'40"	20.00	12.05	N 63°12'34" E	11.87
C8	90°00'00"	25.00	39.27	S 54°32'06" E	35.36
C9	23°20'22"	20.00	8.15	S 02°08'05" W	8.09
C10	122°08'58"	12.00	25.58	S 74°52'45" W	21.01
C11	90°00'00"	20.00	31.42	N 00°57'14" E	28.28
C12	08°42'41"	20.00	3.04	N 09°26'55" E	3.04
C13	00°32'49"	533.38	5.09	N 02°13'16" W	5.09
C14	05°16'40"	25.00	2.30	N 12°10'26" W	2.30
C15	05°04'09"	44.00	3.89	N 11°16'12" E	3.89
C16	01°29'49"	534.81	13.97	N 00°23'59" W	13.97

EASEMENT LINE DATA

NUMBER	DIRECTION	DISTANCE
L1	N 13°48'16" E	45.00'
L2	N 13°48'16" E	35.00'
L3	N 13°48'16" E	100.31'
L4	N 09°32'06" W	10.03'
L5	N 09°32'06" W	179.23'
L6	N 09°32'06" W	18.08'
L7	S 45°38'13" E	15.01'
L8	S 80°27'54" W	9.89'
L9	S 09°32'06" E	32.03'
L10	S 53°41'44" E	13.42'
L11	N 76°11'44" W	4.00'
L12	N 13°48'16" E	3.18'
L13	N 13°48'16" E	77.25'
L14	N 09°32'06" W	34.31'
L15	S 80°27'54" W	13.85'
L16	S 45°57'14" W	59.88'
L17	S 44°02'46" E	90.95'
L18	S 44°02'46" E	49.92'
L19	S 76°11'44" E	20.61'
L20	N 80°27'54" E	13.85'
L21	S 09°32'06" E	34.31'
L22	S 13°48'16" W	49.60'
L23	S 13°48'16" W	27.65'
L24	N 44°02'46" W	90.95'
L25	N 45°57'14" E	59.88'
L26	S 75°47'55" W	6.82'
L27	S 13°48'16" W	180.03'
L28	S 13°48'16" W	4.95'
L29	S 13°48'16" W	10.82'
L30	N 53°41'44" W	20.57'
L31	N 13°48'16" E	7.01'
L32	S 53°41'44" E	20.75'



VICINITY MAP

FINAL PLAT
IHOP No. 9448 ADDITION
 out of
 WILLIAM BLEVINS SURVEY, ABSTRACT NO. 9
 and
 JAMES SMITH SURVEY, ABSTRACT NO. 200
 CITY OF ROCKWALL, ROCKWALL COUNTY, TEXAS

26

Date of Survey: 12/05/98 Job No. 8006-01 Drawn by: K. Eakles SHEET 1 OF 2

HCE Hickman Consulting Engineers, Inc.
 1815 E 19th Street, Suite 2A
 Plano, Texas 75074
 (972) 508-1544 • (800) 570-4387
 FAX (972) 578-9644
 E MAIL: HCE@AIRMAIL.NET
 Planners Surveyors

D-199/200

THIS PLAT HAS 1 LOT AND 1 BLOCK
 CONTAINING 1.0055 ACRES

IHOP No. 9448

99 OCT -5 AM 10:45
 VALLETTE BURNS
 CO. CLERK
 DEPUTY