

- NOTES:**
- CONCRETE SHALL BE 3000 PSI @ 28 DAYS.
 - REINF. STEEL SHALL BE GRADE 60.
 - FOOTINGS ARE DESIGNED FOR 2500 PSF.
 - WALLS ARE DESIGNED FOR AN EQUIV. FLUID PRESSURE OF 40 PCF.
 - SOIL BEARING TO BE VERIFIED DURING CONSTRUCTION PRIOR TO PLACING CONC. - SHOULD ACTUAL CONDITIONS VARY BY MORE THAN 10% - FOOTINGS SHALL BE REDESIGNED.
 - PROVIDE EXPANSION JOINT AT 30'-0" OC.

WALL HT.	CONCRETE DIMS.					REINF.		
	A	B	C	D	E	V	H	T
4'-0"	10"	8"	8"	1'-0"	2'-2"	#3 @ 18"	#3 @ 10"	#3 @ 18"
6'-0"	10"	8"	1'-0"	1'-0"	2'-2"	#3 @ 18"	#3 @ 10"	#3 @ 18"
8'-0"	10"	1'-1"	2'-4"	1'-0"	4'-5"	#3 @ 18"	#3 @ 10"	#3 @ 18"

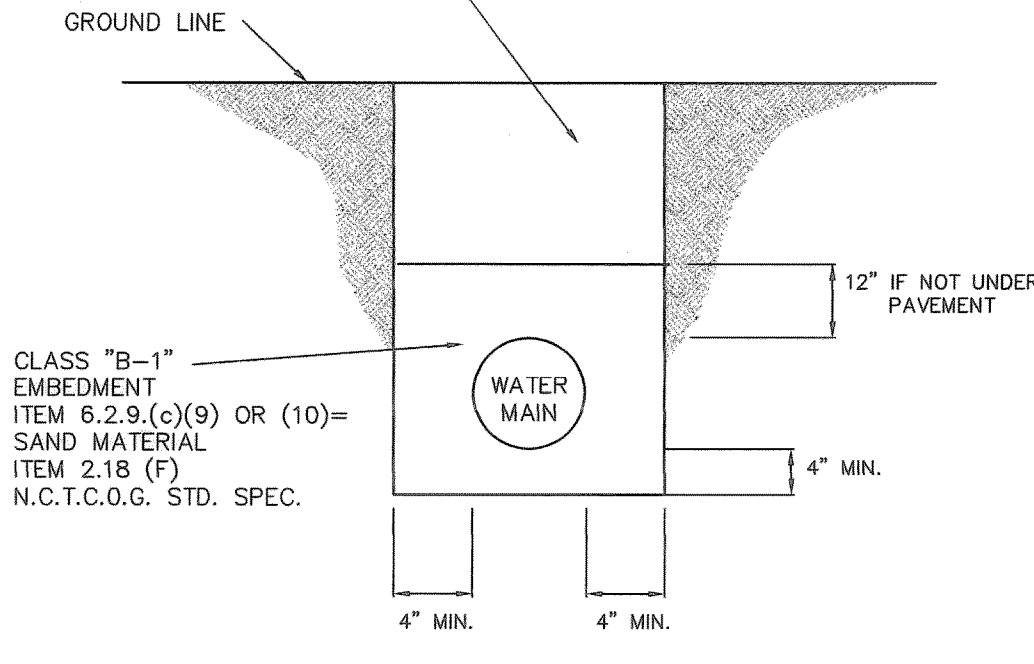
RETAINING WALL DETAIL

TRENCH BACKFILL ITEM 6.2.10.(a) N.C.T.C.O.G. STD. SPEC.

(A) UNDER PAVEMENT: MECHANICAL TAMP TO 95% MODIFIED PROCTOR DENSITY AT OPTIMUM MOISTURE OR ABOVE.

(B) IN PARKWAYS OR OTHER AREAS: MECHANICAL TAMP TO 90% STANDARD PROCTOR DENSITY.

TEST DENSITY EVERY 300' ON EVERY SECOND LIFT. COMPACTION ITEM 6.2.9.(b). TRENCH BACKFILL NEEDS TO BE GRANULAR MATERIAL UP TO SUBGRADE WHEN UNDER PAVEMENT. WHEN NOT UNDER PAVEMENT NATIVE MATERIAL MAY BE UTILIZED.



NOTE: THE COST OF GRANULAR EMBEDMENT, CRUSHED STONE AND COMPACTION SHALL BE INCLUDED IN THE PRICE BID PER FOOT FOR THE PIPE.

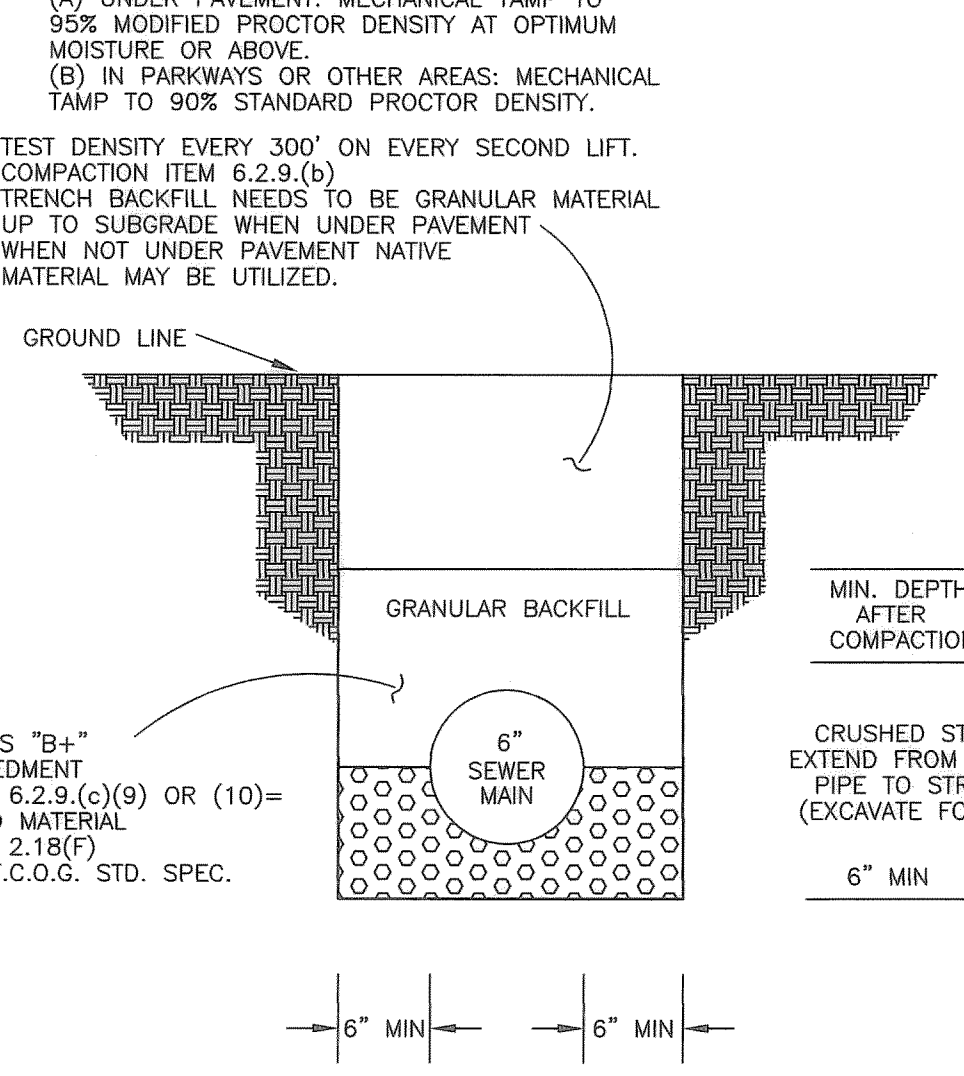
WATER MAIN EMBEDMENT DETAIL

TRENCH BACKFILL ITEM 6.2.10.(a) N.C.T.C.O.G. STD. SPEC.

(A) UNDER PAVEMENT: MECHANICAL TAMP TO 95% MODIFIED PROCTOR DENSITY AT OPTIMUM MOISTURE OR ABOVE.

(B) IN PARKWAYS OR OTHER AREAS: MECHANICAL TAMP TO 90% STANDARD PROCTOR DENSITY.

TEST DENSITY EVERY 300' ON EVERY SECOND LIFT. COMPACTION ITEM 6.2.9.(b). TRENCH BACKFILL NEEDS TO BE GRANULAR MATERIAL UP TO SUBGRADE WHEN UNDER PAVEMENT. WHEN NOT UNDER PAVEMENT NATIVE MATERIAL MAY BE UTILIZED.



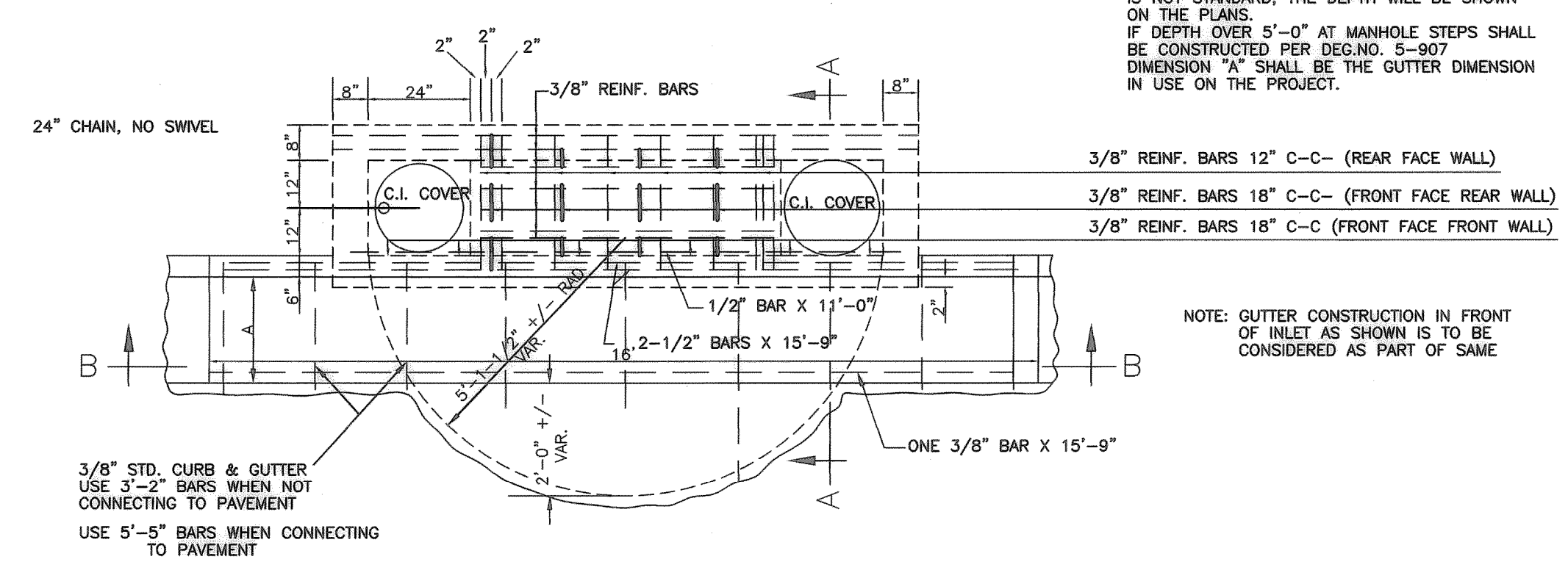
NOTE: THE COST OF GRANULAR EMBEDMENT, CRUSHED STONE AND COMPACTION SHALL BE INCLUDED IN THE PRICE BID PER FOOT FOR THE PIPE.

SEWER MAIN EMBEDMENT DETAIL

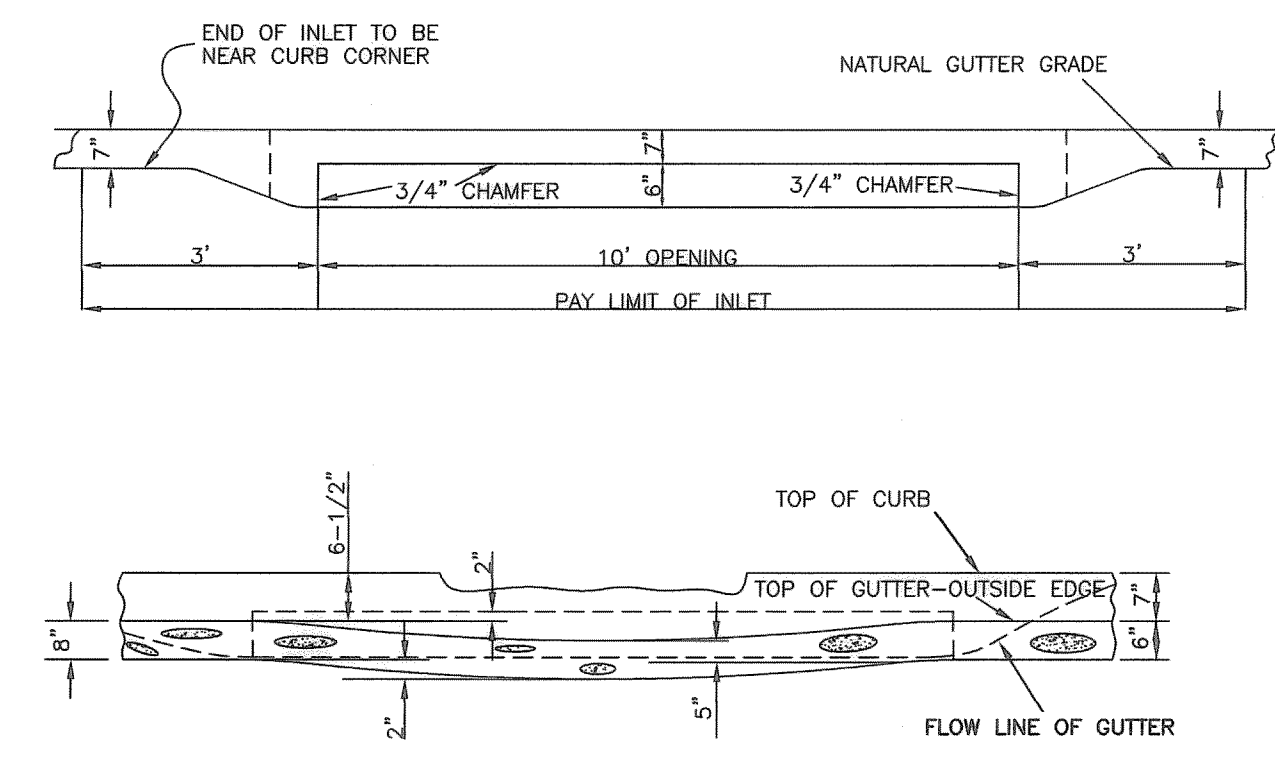
AS-BUILT
DECEMBER 6, 1997 1999

NOTE: THE INTENT OF THE OWNER AND ENGINEER WAS TO CONSTRUCT THE UTILITIES ACCORDING TO THE PLANS AS APPROVED BY THE CITY OF CARROLLTON. THE ALIGNMENT AND GRADES WERE SET ON THE GROUND FOR CONSTRUCTION ACCORDING TO SAID PLANS. THE CITY OF CARROLLTON INSPECTED THE CONSTRUCTION. THE OWNER OR ENGINEER DID NOT VERIFY ALIGNMENT OR GRADES AFTER CONSTRUCTION. WE ARE NOT AWARE OF ANY CHANGES OR REVISIONS TO THESE PLANS DURING CONSTRUCTION EXCEPT AS NOTED.

ALL EXPOSED SURFACES ARE TO BE WELL FINISHED. EXCAVATION FOR INLET IS TO BE INCLUDED IN PRICE BID FOR SAME.

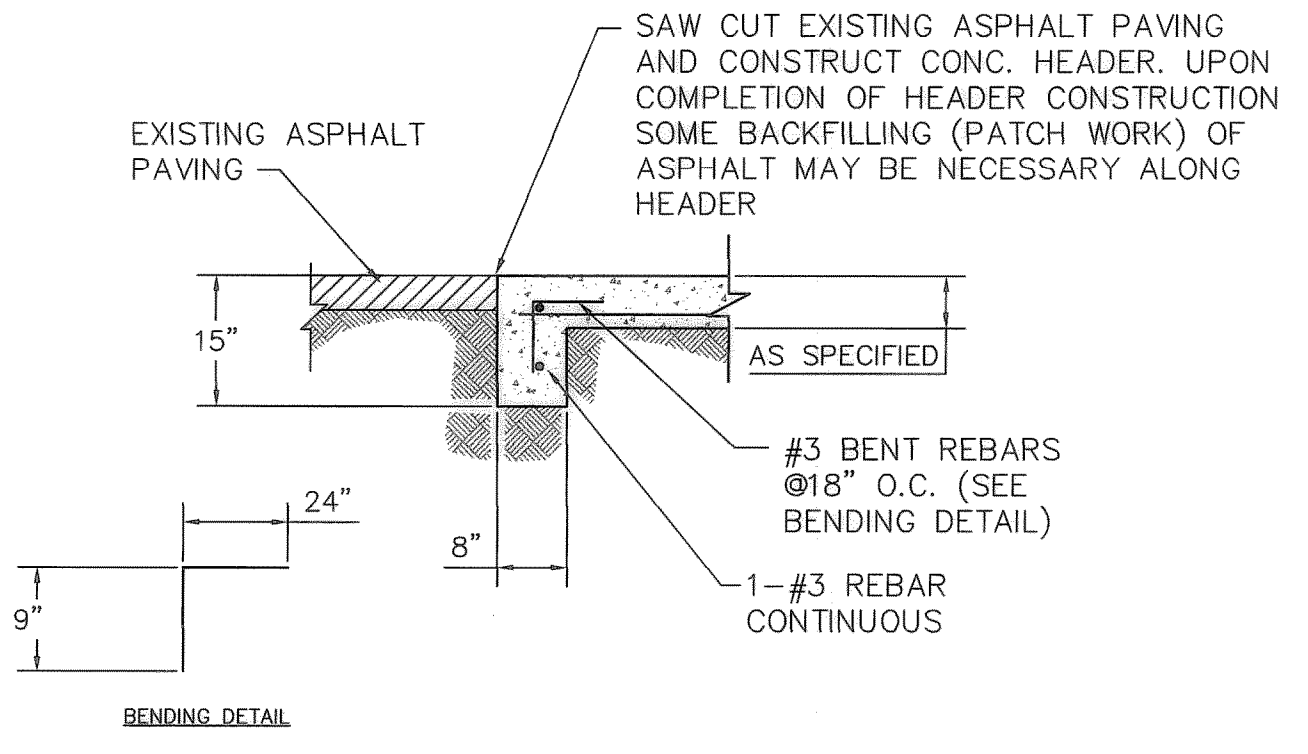


THE DEPTH "D" FOR ALL STANDARD 10' INLETS SHALL BE 4'-0" AT THE UPPER END AND 4'-0" THE THE OUTLET END FROM THE TOP OF CURB TO THE FLOW LINE OF THE INLET. IF THE INLET IS NOT STANDARD, THE DEPTH WILL BE SHOWN ON THE PLANS. IF DEPTH OVER 5'-0" AT MANHOLE STEPS SHALL BE CONSTRUCTED PER DEGN. 5-907 DIMENSION "A" SHALL BE THE GUTTER DIMENSION IN USE ON THE PROJECT.



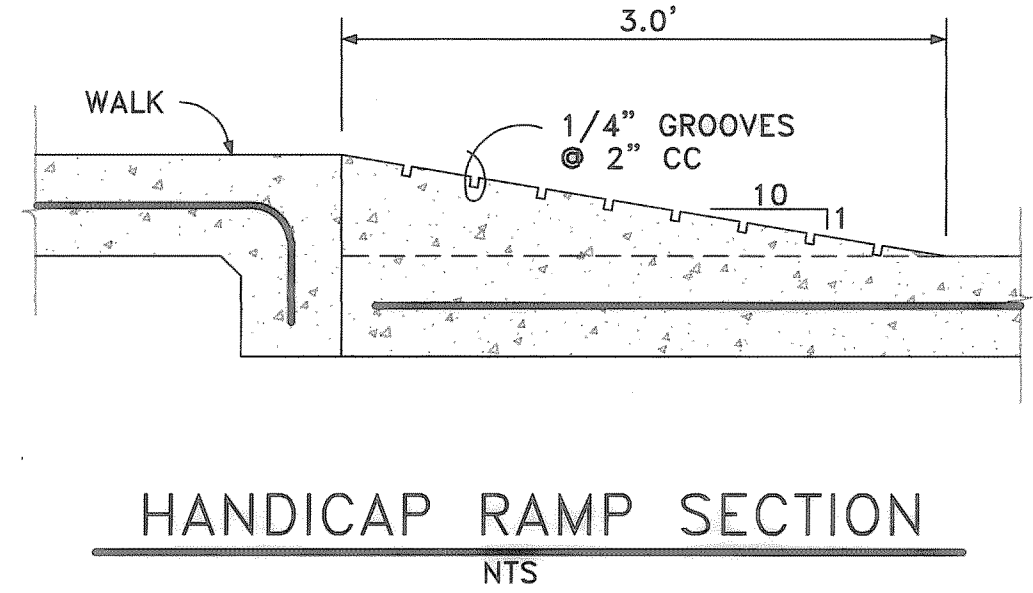
STANDARD 10' STORM DRAIN INLET

N.T.S.



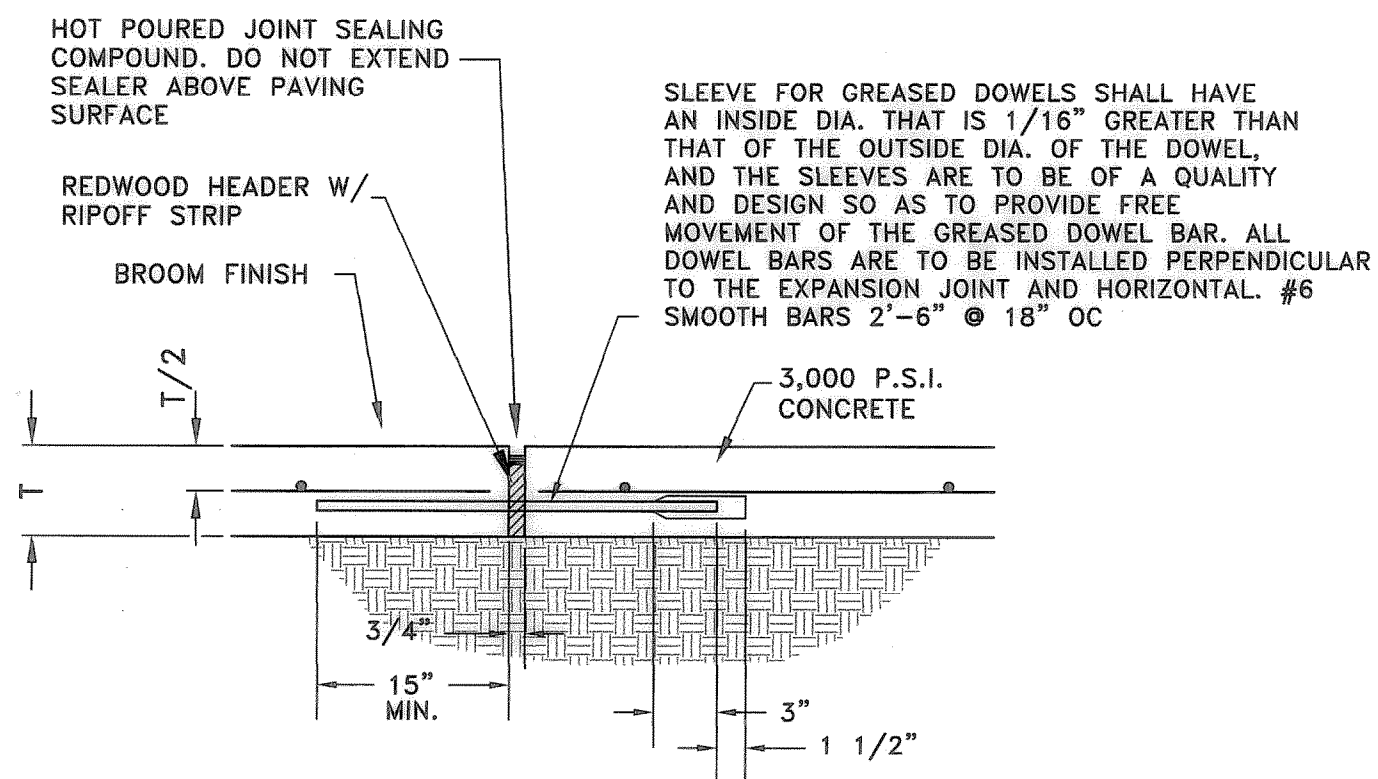
ASPHALT TO CONC. PAVING HEADER DETAIL

N.T.S.



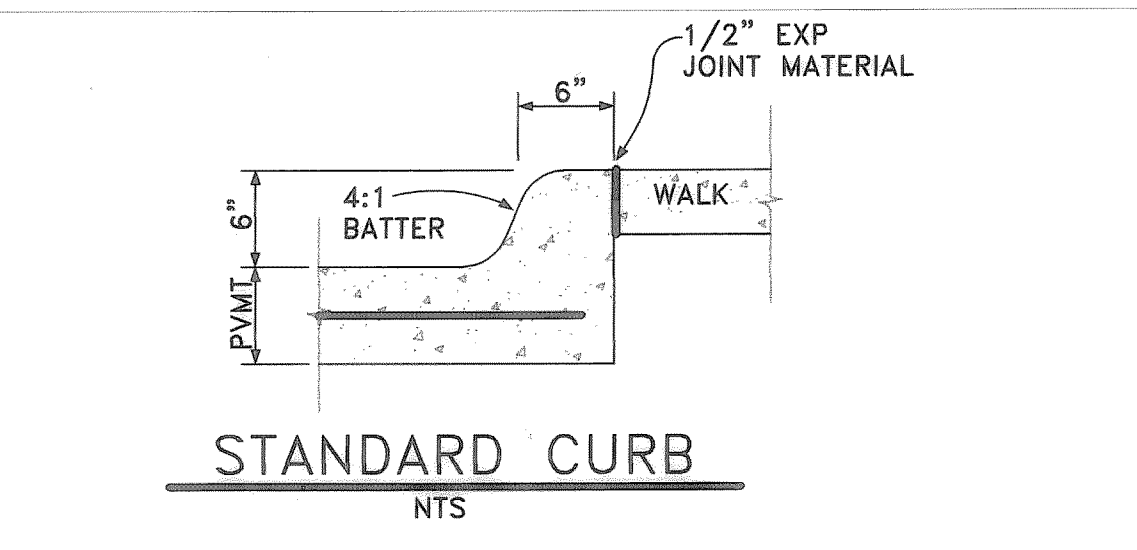
HANDICAP RAMP SECTION

N.T.S.



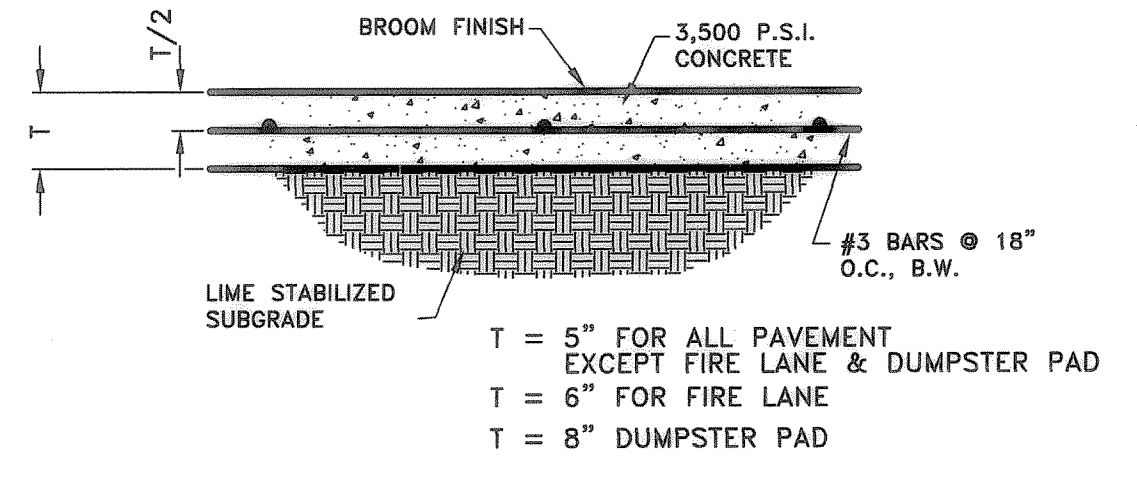
TYPICAL EXPANSION JOINT (TYPE "A")

N.T.S.



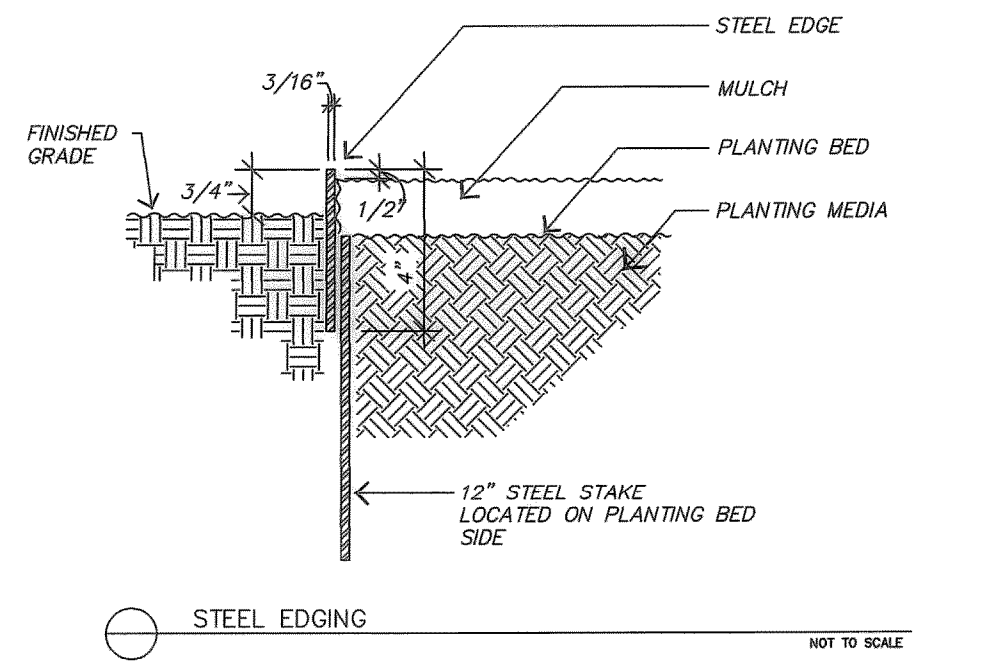
STANDARD CURB

N.T.S.

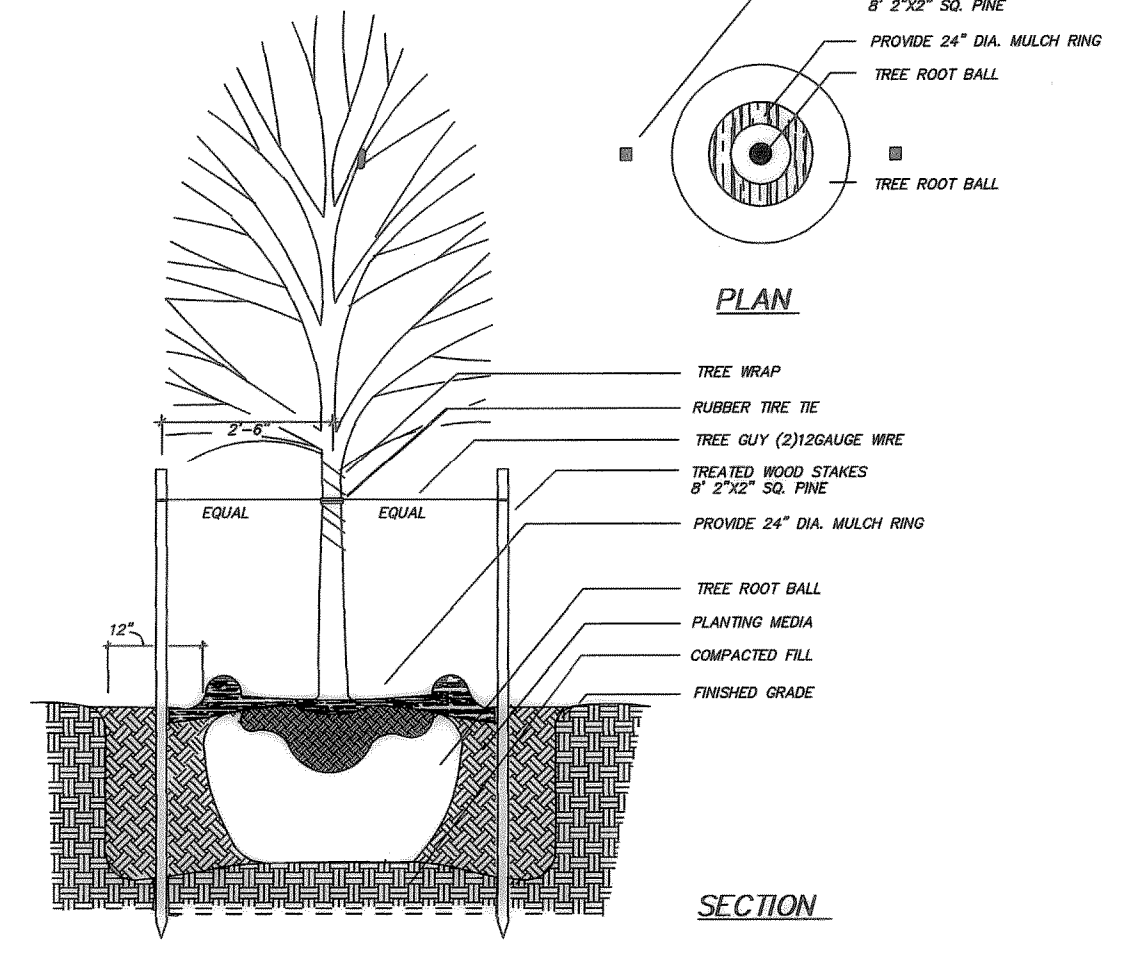


TYPICAL PAVEMENT SECTION

N.T.S.

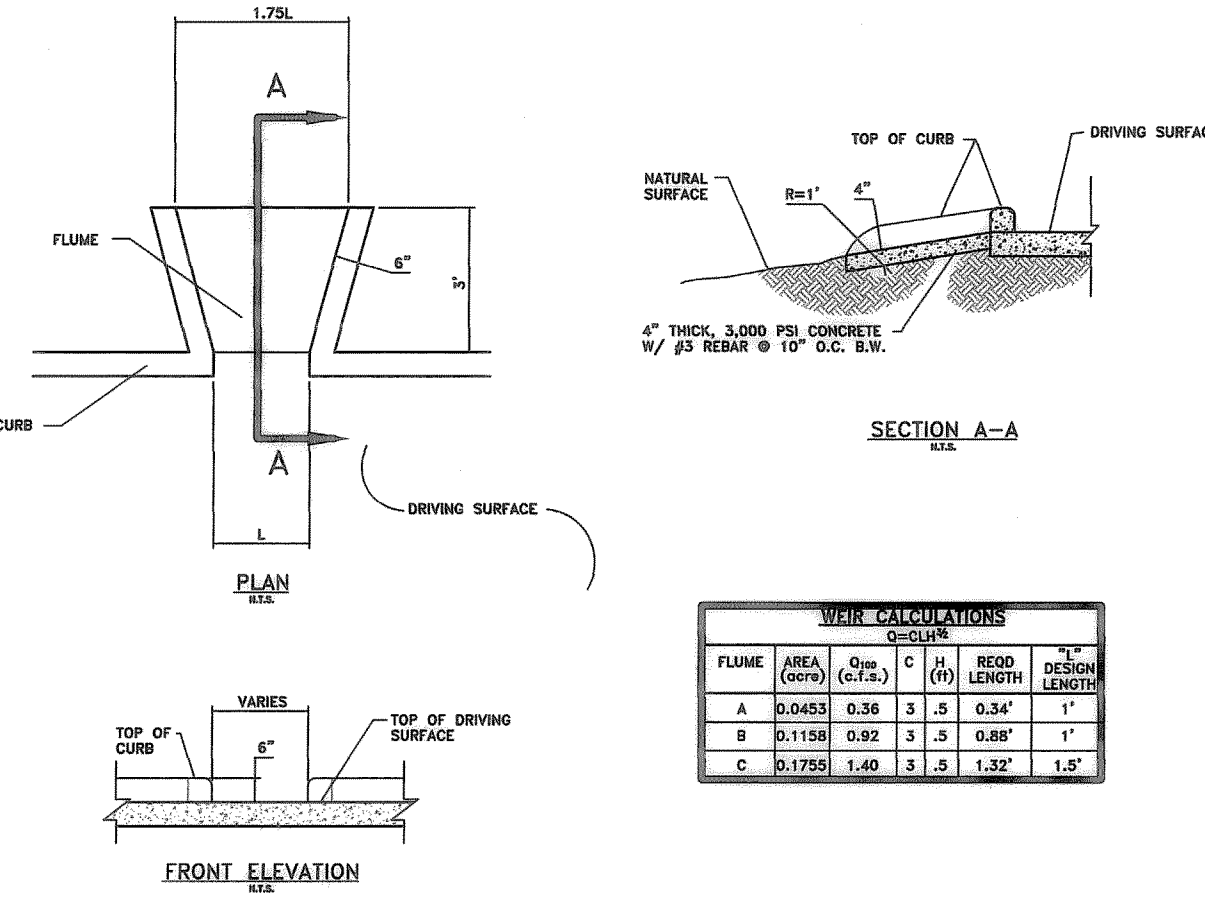


PLANTING DETAILS

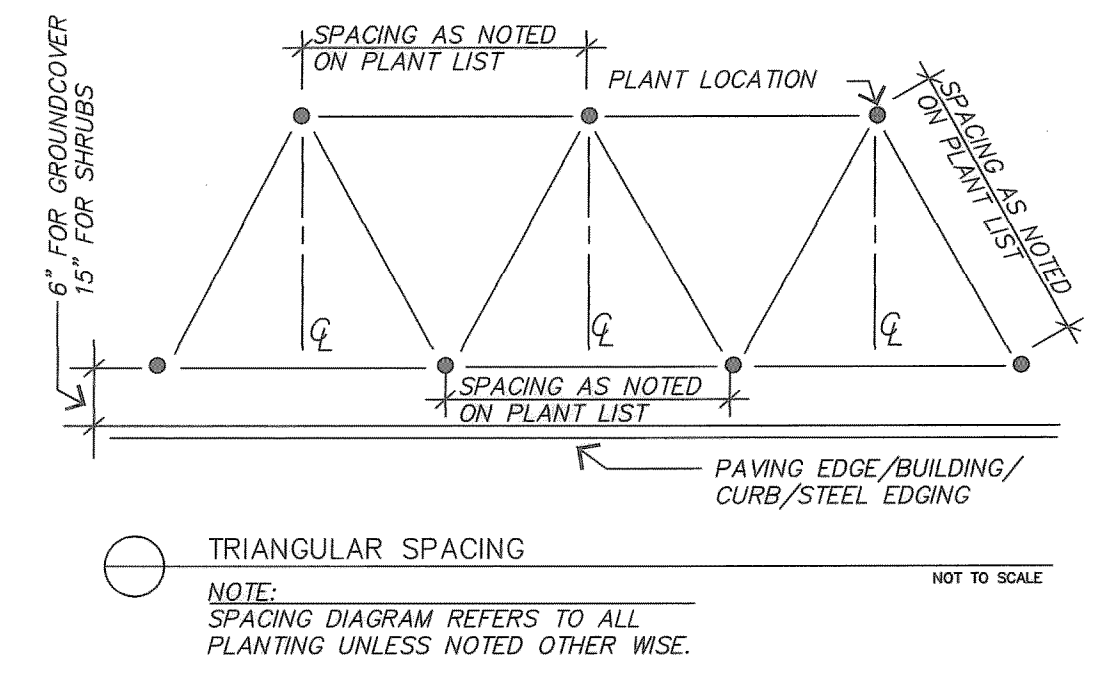


TREE PLANTING (TYPICAL)

NOT TO SCALE



FLUME	AREA (SQ. FT.)	CONC. (CY)	C (IN)	REIN. LENGTH (LBS)	DESIGN LENGTH (LBS)
A	0.0453	0.36	3	1.5	0.34
B	0.1158	0.92	3	3	0.89
C	0.1755	1.40	3	3.5	1.32



TRIANGULAR SPACING

NOTE: SPACING DIAGRAM REFERS TO ALL PLANTING UNLESS NOTED OTHER WISE.

Hickman Consulting Engineers, Inc.
1316 E. 19th Street, Suite 2A
Plano, Texas 75074
(972) 909-1544 • (972) 578-9644
(800) 578-4387
E-MAIL: HCEI@AIRMAIL.NET
Planners Surveyors Engineers

DETAILS & NOTES
IHOP RESTAURANT - UNIT NO. 9404
ROCKWALL, TEXAS
IHOP RESTAURANT
HWY. 6 @ SWEETWATER
SUGAR LAND, TEXAS

scale: 1"=20'
date: MARCH 1999
dwg. by: DUA
chk'd by: MHH
job no: 8001-82
file: 800162LS
date: 6/20/99(F)
date of revision:

STATE OF TEXAS
MARK J. HICKMAN
78409
PROFESSIONAL ENGINEER
12/6/99

E:\800162\80016201.DWG Min Dec 06 18:22:06 1999 dbm