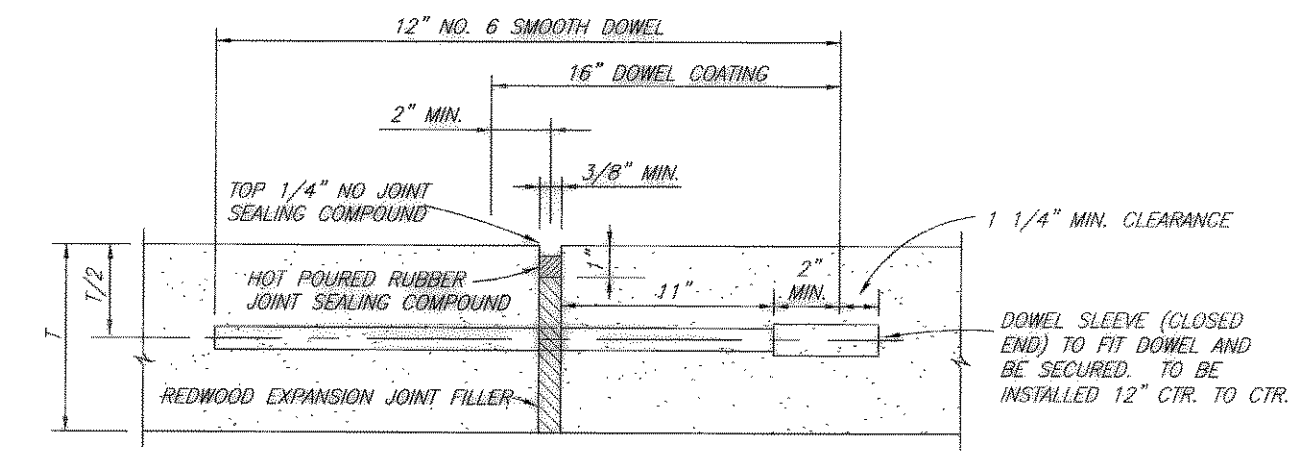


LEGEND

EXPANSION JOINT (SEE BELOW)	---
LONGITUDINAL OR TRANSVERSE JOINT (SEE BELOW)	---
NOTE: ALL DRIVE PAVING 6" THICK 3600 PSI CONCRETE (TYP U.N.O.)	
5" THICK 3600 PSI CONC. PAVING (@ PARKING SPACES)	
8" THICK 3600 PSI CONC. PAVING (@ DUMPSTER AREA)	
6" THICK 3600 PSI CONC. PAVING (@ FIRELANE)	
NOTE: IF HAND-POURED, MIN. 6.5 SACK. IF MACHINE-POURED, MIN. 6.0 SACK.	
NO SAND UNDER PAVEMENT	

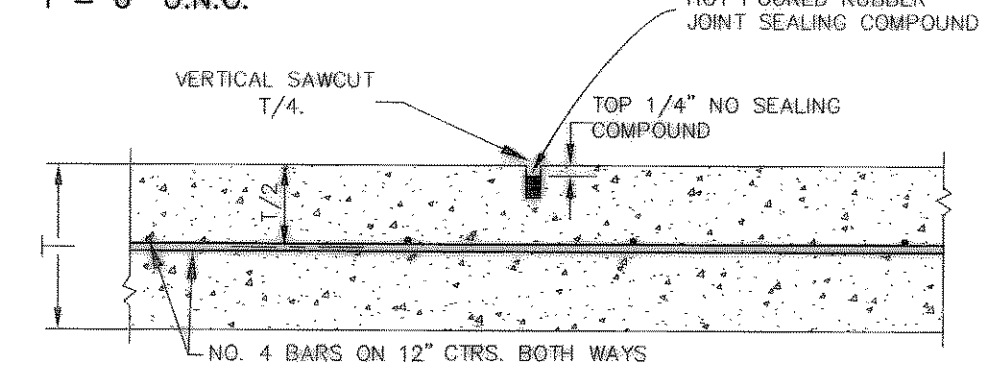
T = 6" U.N.O.



- TRANSVERSE EXPANSION JOINT NOTES:
- DOWELS AND REINFORCING BARS SHALL BE SUPPORTED BY AN APPROVED DEVICE.
  - TRANSVERSE EXPANSION JOINTS SHALL BE LOCATED AT ALL INTERSECTIONS.

1 TRANSVERSE EXPANSION JOINT NOT TO SCALE

T = 6" U.N.O.



2 TRANSVERSE AND LONGITUDINAL SAWED DUMMY JOINT NOT TO SCALE

PAVING PLAN SCALE: 1" = 20'-0"

AS-BUILT  
01-10-06  
J. Brian Campbell  
J. BRIAN CAMPBELL, P.E.

ARCHITECT:  
ANTON JACOBS ARCHITECTS, INC.  
2685 CREEK SIDE CT.  
HIGHLAND VILLAGE, TX 75077  
TEL: 1-888-326-3712

CONSTRUCTION:  
BENCHMARK CONSTRUCTION, INC.  
123A MARSHALL CREEK ROAD  
ROANOKE, TX 76262  
TEL: 817-854-0300  
FAX: 817-854-0303

Rockwall Lube Center  
FM 3907 & RALPH HALL PARKWAY  
ROCKWALL, TEXAS

g w C engineering  
4201 Spring Valley Road Ste. 1120  
Farmers Branch, TX 75244  
(tel) 469-374-0810 (fax) 469-374-0811  
(email) production@gwceengineering.com

JOB NO. 50031  
DATE: JUN 2005  
DRAWN: IMH  
CHECKED: JBC  
SCALE: NOTED  
DRAWING NUMBER  
C-6