

STA. 0+66.00 LINE 'B'
CONST. STD. 4" DIA. MANHOLE
5 LF 8" STUBOUT WITH PLUG
TO THE SOUTHWEST
N 7012756.3057
E 2592587.8611

CURVE DATA
Δ = 8°43'19"
R = 922.50'
T = 70.35'
L = 140.43'

60 L.F. 15" WW
BY OTHER THAN
OPEN CUT

ROCKWALL PARKWAY
(EX. 45' B-B CONCRETE)

STA. 21+18.89 LINE 'A'
STA. 0+00 LINE 'B'
CONST. STD. 4" DIA. MANHOLE
N 7012731.4128
E 2592648.9211

STA. 26+72.94 LINE 'A'
CONST. 4" DIA. DROP MANHOLE
5 LF 8" STUBOUT WITH PLUG
TO THE SOUTHEAST AND
5 LF 8" STUBOUT WITH PLUG
TO THE SOUTHWEST
N 7012222.8104
E 2592430.2938

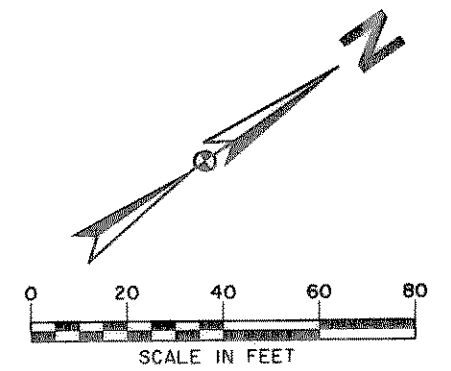
FIRE STATION
LOT 9, BLOCK A

FUTURE 8"
WASTEWATER

LOT 2, BLOCK A
HORIZON RIDGE CENTER

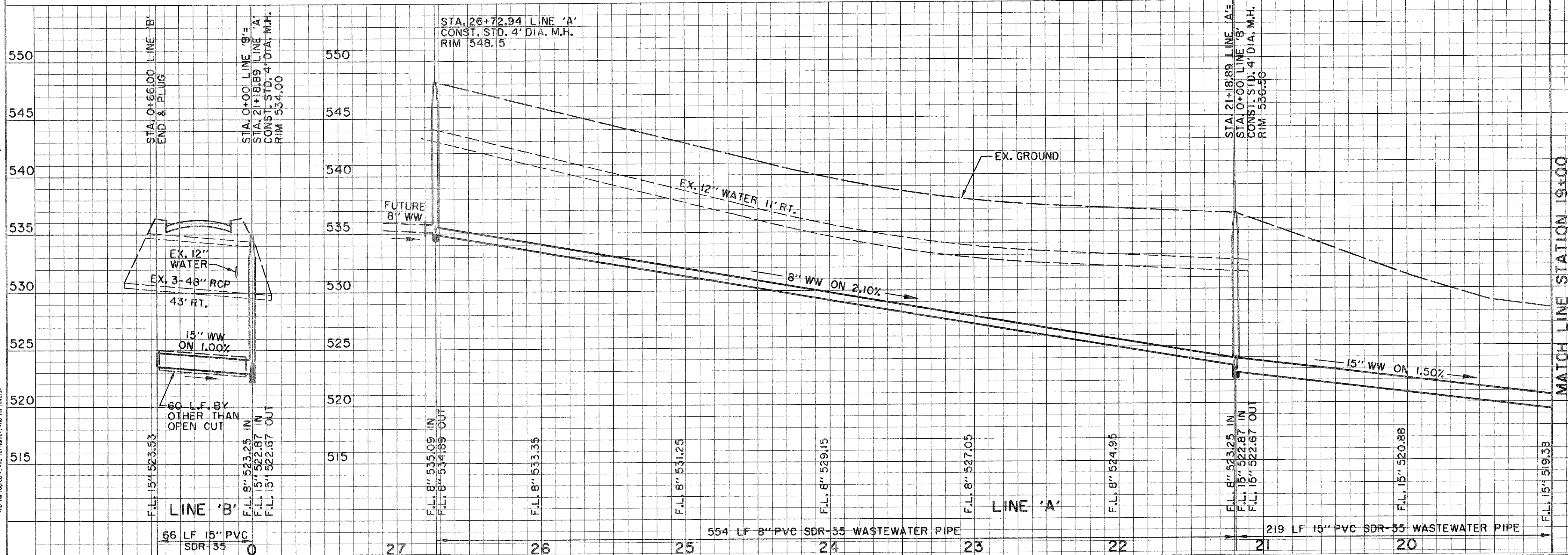
LOT 1,
BLOCK A

MATCH LINE STATION 19+00



NOTE:
INFORMATION ON UNDERGROUND FRANCHISED UTILITIES, BOTH EXISTING & PROPOSED, WAS NOT RECEIVED PRIOR TO ISSUING THESE PLANS FOR BID. CONTRACTOR TO VERIFY IN THE FIELD THE LOCATION OF ALL EXISTING UTILITIES PRIOR TO CONSTRUCTION. INFORMATION PROVIDED WITHIN THESE PLANS DOES NOT RELIEVE THE CONTRACTOR OF THE FULL AND TOTAL RESPONSIBILITY FOR THE PROTECTION OF EXISTING UTILITIES NOR ANY DAMAGES CAUSED BY SAID CONTRACTOR DURING CONSTRUCTION.

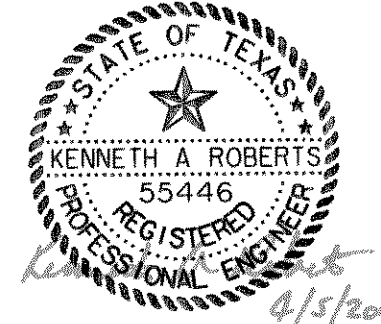
NOTE:
TOPO PROVIDED BY
PSA ENGINEERING
17400 DALLAS PARKWAY, SUITE 110
DALLAS, TEXAS 75287
(972)248-9651 FAX (972)248-9681



BENCHMARKS:
550 NORTHWEST CORNER OF 3'x3' DROP INLET NORTH OF THE INTERSECTION OF HORIZON ROAD AND TUBBS ROAD. ELEVATION 512.21
545 SQUARE CUT IN NORTH CORNER OF HEADWALL ON THE EAST SIDE OF TUBBS ROAD 425' SOUTHEAST OF TEXAS AVENUE. ELEVATION 509.78

RECORD DRAWINGS NOVEMBER 1, 2000
THIS RECORD DOCUMENT HAS BEEN PREPARED BASED IN PART UPON INFORMATION FURNISHED BY OTHERS. THE DESIGN PROFESSIONAL CANNOT ASSURE THE ACCURACY OF OTHERS' INFORMATION AND THIS IS NOT RESPONSIBLE FOR THE ACCURACY OF THIS RECORD DOCUMENT OR FOR ANY ERROR OR OMISSION THAT MAY HAVE BEEN INCORPORATED INTO IT AS A RESULT. THOSE RELYING ON THIS RECORD DOCUMENT ARE ADVISED TO OBTAIN INDEPENDENT VERIFICATION OF ITS ACCURACY BEFORE APPLYING IT FOR ANY PURPOSE.

THE SEAL APPEARING ON THIS DOCUMENT WAS AUTHORIZED BY KENNETH A. ROBERTS, P.E. 55446 ON APRIL 5, 2000



RECORD DRAWING 11/1/2000	
WASTEWATER PLAN & PROFILE LINE 'A' - STA. 19+00 TO STA. 27+83.90	
HORIZON RIDGE	
WASTEWATER IMPROVEMENTS CITY OF ROCKWALL, TEXAS	
Huff-Zollars, Inc.	
Dallas, Ft. Worth, Houston, El Paso, Albuquerque, Denver, Phoenix, Tustin, Ontario, Seattle, Tacoma	
DESIGN	HZI
DRAWN	HZI
APPR.	KAR
SCALE	H: 1"=40' V: 1"=5'
DATE	APRIL 2000
PROJECT NO.	01258401
NO.	U-3