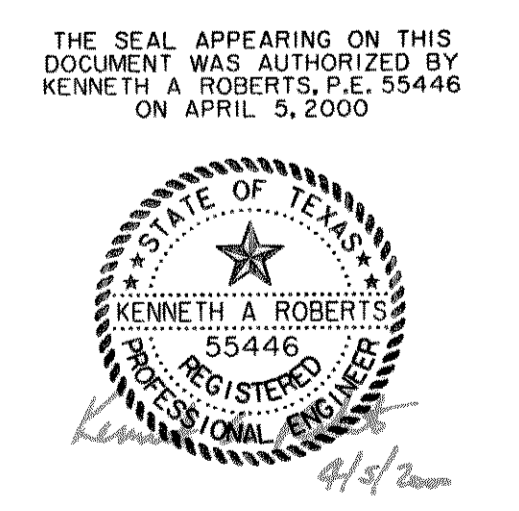


**NOTE:**  
 INFORMATION ON UNDERGROUND FRANCHISED UTILITIES, BOTH EXISTING & PROPOSED, WAS NOT RECEIVED PRIOR TO ISSUING THESE PLANS FOR BID. CONTRACTOR TO VERIFY IN THE FIELD THE LOCATION OF ALL EXISTING UTILITIES PRIOR TO CONSTRUCTION. INFORMATION PROVIDED WITHIN THESE PLANS DOES NOT RELIEVE THE CONTRACTOR OF THE FULL AND TOTAL RESPONSIBILITY FOR THE PROTECTION OF EXISTING UTILITIES NOR ANY DAMAGES CAUSED BY SAID CONTRACTOR DURING CONSTRUCTION.

**NOTE:**  
 TOPO PROVIDED BY  
 PSA ENGINEERING  
 17400 DALLAS PARKWAY, SUITE 110  
 DALLAS, TEXAS 75287  
 (972)248-9651 FAX (972)248-9681

**BENCHMARKS:**  
 NORTHWEST CORNER OF 3'x3' DROP INLET NORTH OF THE INTERSECTION OF HORIZON ROAD AND TUBBS ROAD, ELEVATION 512.21  
 SQUARE CUT IN NORTH CORNER OF HEADWALL ON THE EAST SIDE OF TUBBS ROAD 425' SOUTHEAST OF TEXAS AVENUE, ELEVATION 509.78

RECORD DRAWINGS NOVEMBER 1, 2000  
 THIS RECORD DOCUMENT HAS BEEN PREPARED BASED IN PART UPON INFORMATION FURNISHED BY OTHERS. THE DESIGN PROFESSIONAL CANNOT ASSURE THE ACCURACY OF OTHERS' INFORMATION AND THIS IS NOT RESPONSIBLE FOR THE ACCURACY OF THIS RECORD DOCUMENT OR FOR ANY ERROR OR OMISSION THAT MAY HAVE BEEN INCORPORATED INTO IT AS A RESULT. THOSE RELYING ON THIS RECORD DOCUMENT ARE ADVISED TO OBTAIN INDEPENDENT VERIFICATION OF ITS ACCURACY BEFORE APPLYING IT FOR ANY PURPOSE.

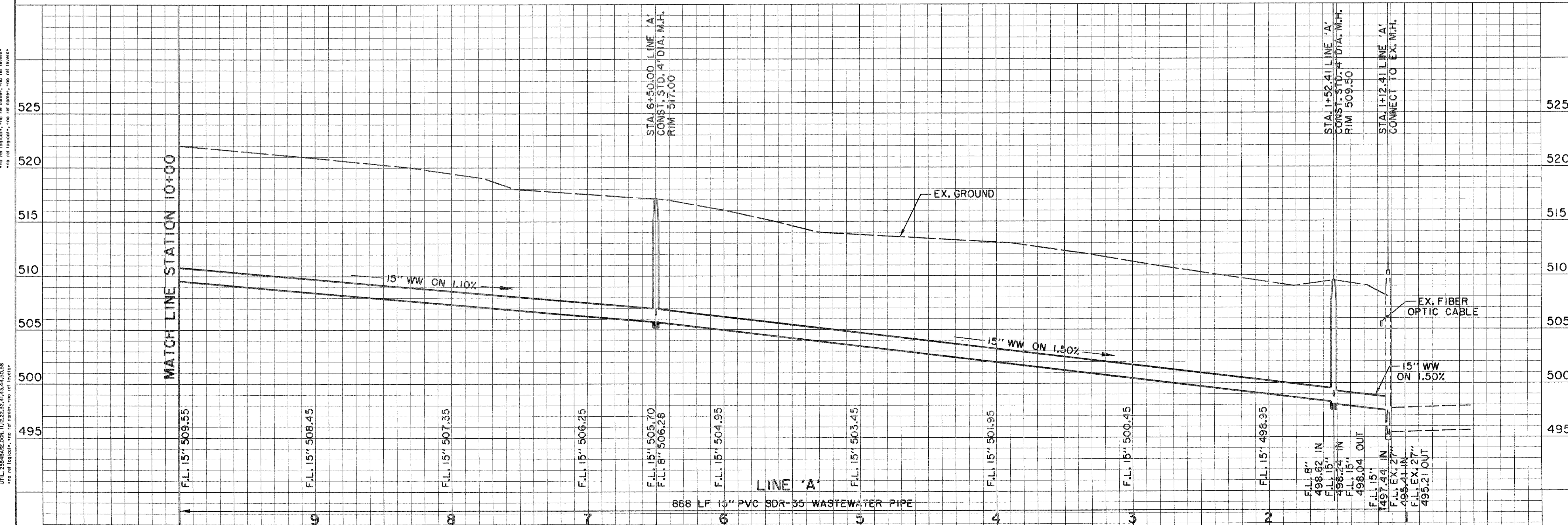


RECORD DRAWING 11/1/2000

**WASTEWATER PLAN & PROFILE**  
 LINE 'A' - STA. 1+00.23 TO STA. 10+00  
 HORIZON RIDGE  
 WASTEWATER IMPROVEMENTS  
 CITY OF ROCKWALL, TEXAS

Huff-Zollars, Inc.  
 Dallas, Ft. Worth, Houston, El Paso, Albuquerque, Denver, Phoenix, Austin, Ontario, Seattle, Tacoma

DESIGN	DRAWN	APPR.	SCALE	DATE	PROJECT NO.	NO.
HZI	HZI	KAR	H <sub>1</sub> 1"=40' V <sub>1</sub> 1"=5'	APRIL 2000	01258401	U-1



NO. OF REVISIONS, NO. OF NAMES, NO. OF REVISIONS  
 NO. OF REVISIONS, NO. OF NAMES, NO. OF REVISIONS  
 NO. OF REVISIONS, NO. OF NAMES, NO. OF REVISIONS  
 NO. OF REVISIONS, NO. OF NAMES, NO. OF REVISIONS

DATE: 11/1/2000 9:56:00 AM  
 USER: KROBERTS  
 PLOT: WASTEWATER.DWG  
 PLOT SCALE: 1/4"=1'-0"