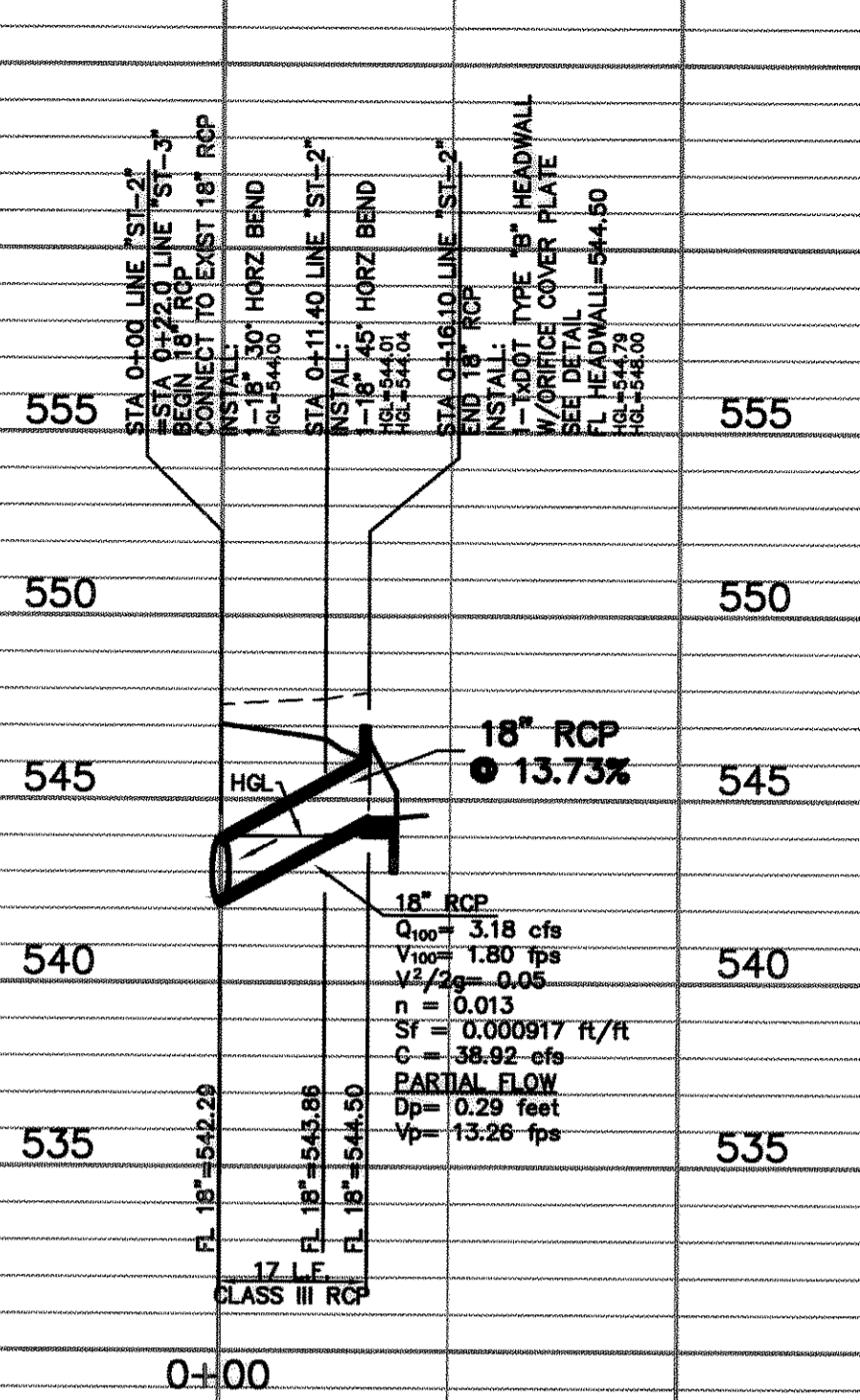
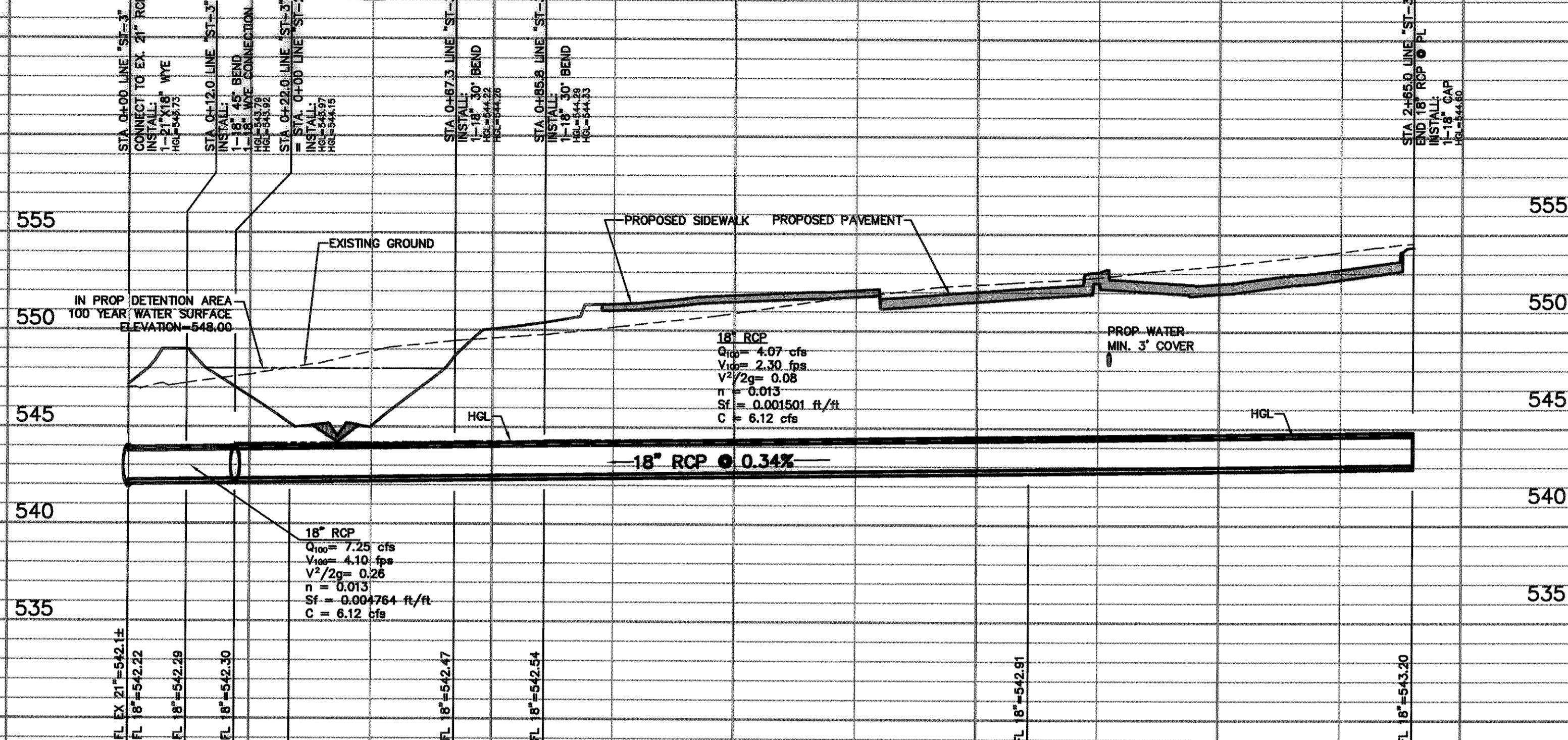


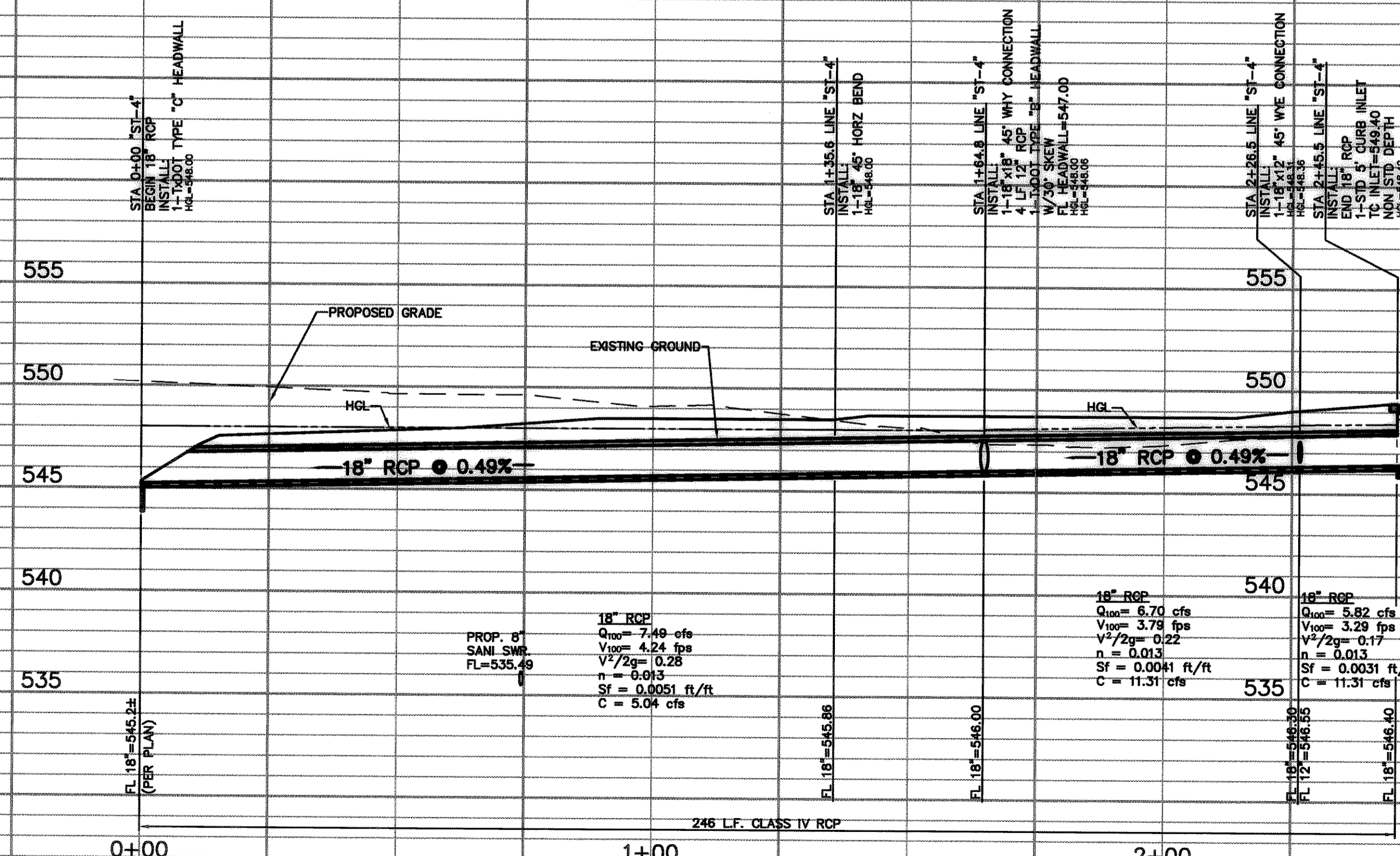
**STORM SEWER LINE "ST-1"**



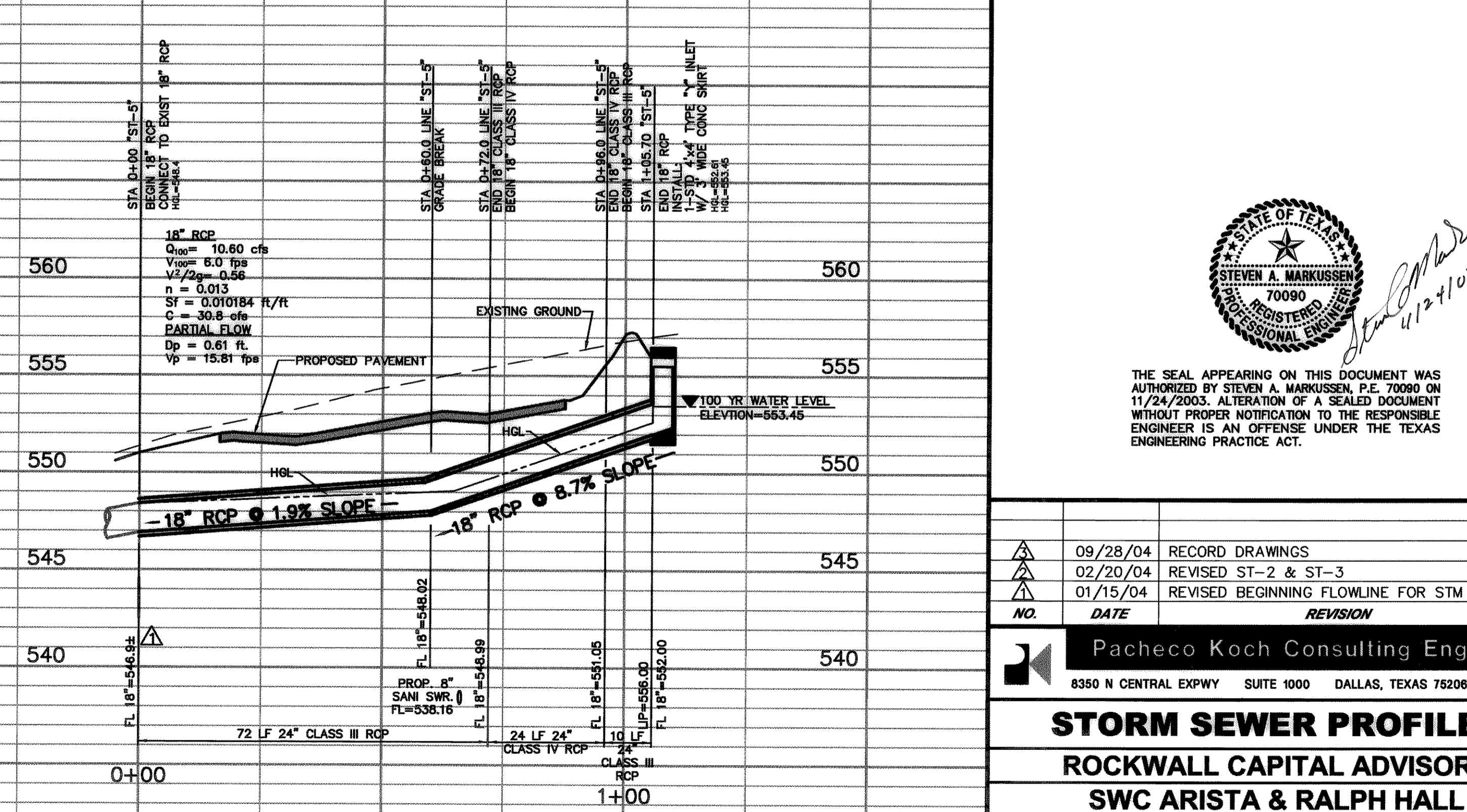
**STORM SEWER LINE "ST-2"**



**STORM SEWER LINE "ST-3"**



**STORM SEWER LINE "ST-4"**



**STORM SEWER LINE "ST-5"**

**RECORD DRAWING**  
 THIS DRAWING HAS BEEN REVISED TO REFLECT CONSTRUCTION RECORDS MAINTAINED AND PROVIDED BY THE CONTRACTOR FOR THIS PROJECT.  
 CONTRACTOR: CONSTRUCTORS  
 DATE REVISED: 09-28-2004



THE SEAL APPEARING ON THIS DOCUMENT WAS AUTHORIZED BY STEVEN A. MARKUSSEN, P.E. 70990 ON 11/24/2003. ALTERATION OF A SEALED DOCUMENT WITHOUT PROPER NOTIFICATION TO THE RESPONSIBLE ENGINEER IS AN OFFENSE UNDER THE TEXAS ENGINEERING PRACTICE ACT.

NO.	DATE	REVISION
1	09/28/04	RECORD DRAWINGS
2	02/20/04	REVISED ST-2 & ST-3
3	01/15/04	REVISED BEGINNING FLOWLINE FOR STM LN "ST-5"

**Pacheco Koch Consulting Engineers**  
 8350 N CENTRAL EXPWY SUITE 1000 DALLAS, TEXAS 75206 972.235.3031

**STORM SEWER PROFILES**  
**ROCKWALL CAPITAL ADVISORS**  
**SWC ARISTA & RALPH HALL**  
 LEGAL DESCRIPTION OR ADDRESS  
**CITY OF ROCKWALL, TEXAS**

DESIGN	DRAWN	DATE	SCALE	NOTES	FILE	NO.
CJE	FJM	NOV, 2003	1"=20' 1"=5'			<b>C3.2</b>