

**F.M. 3097 (HORIZON RD.)**

**SITE PAVING GENERAL NOTES:**

- ALL CONCRETE PAVING SHALL BE OF THE THICKNESS AND STRENGTH SHOWN ON THE PLANS. CONCRETE COMPRESSIVE STRENGTH TO BE DETERMINED AT 28 DAYS. CONCRETE WILL HAVE A ONE INCH TO 4" SLUMP AND REINFORCED WITH #3 BARS @ 18" O.C.E.W. REINFORCING SHALL BE SUPPORTED BY CHAIRS SPACED AT 16" S.F. (4' x 4' PATTERN) MAXIMUM INTERVAL.
- PROOF ROLL SUBGRADE WITH HEAVY PNEUMATIC EQUIPMENT. ANY SOFT OR PUMPING AREAS SHOULD BE EXCAVATED TO A FIRM SUBGRADE AND BACKFILLED FOLLOWING PROCEDURES DESCRIBED IN THE SITE GRADING SECTION OF THE PROJECT SOILS REPORT. SCARIFY SUBGRADE TO A DEPTH OF 6" AND UNIFORMLY COMPACTED TO A MINIMUM 95 PERCENT (95%) STANDARD PROCTOR AT OR ABOVE OPTIMUM MOISTURE. ALL FILL TO BE COMPACTED WITH SHEEPS FOOT ROLLER.
- SEALANT MATERIAL TO BE OAS44 ASPHALT OR A RUBBER BASED COMPOUND, U.N.O. SPECIFICATIONS TO BE SUBMITTED TO THE ENGINEER PRIOR TO INSTALLATION.
- BREAKOUTS FOR REMOVAL OF EXISTING PAVEMENT AND CURBS SHALL BE MADE BY SAW CUT WHEN ADJACENT TO PROPOSED PAVING AND/OR CURBS.
- PROPOSED CONCRETE CURBS SHALL MATCH ELEVATIONS OF EXISTING CURBS.
- CONCRETE TO BE FLOAT FINISHED AND CURED FOR A MINIMUM OF 72 HOURS.
- FIRE LANES SHALL BE MARKED ON THE VERTICAL FACE OF THE CURB ALONG THE ENTIRE LENGTH OF THE FIRELANE WITH A SIX INCH (6") WIDE STRIPE USING RED TRAFFIC PAINT, WITH WORDING "NO PARKING" AND "FIRE LANE" PAINTED ON THE LINES AT INTERVALS OF TWENTY-FIVE FEET (25'). THE LETTERING WILL BE FOUR INCHES (4") HIGH WITH A ONE INCH (1") WIDE STROKE PAINTED WITH WHITE TRAFFIC PAINT. (2 COATS)
- ALL PARKING SPACES AND STRIPED ISLANDS SHOWN ON PROPOSED SITE SHALL BE MARKED WITH TWO COATS 4" WIDE WHITE PAINTED PAVEMENT STRIPING ALL PARKING SPACES ARE 9' IN WIDTH UNLESS OTHERWISE NOTED.
- ALL WORKMANSHIP AND MATERIALS SHALL BE IN ACCORDANCE WITH CITY OF ROCKWALL STANDARD SPECIFICATIONS AND/OR SPECIFICATIONS ESTABLISHED BY THIS PROJECT. THE MOST STRINGENT SHALL APPLY.
- CONTRACTOR SHALL SUBMIT A JOINT SPACING PLAN TO THE ENGINEER PRIOR TO PLACEMENT OF CONCRETE PAVEMENT. CONTROL JOINTS SHALL BE INSTALLED AT A MAXIMUM SPACING OF 12' O.C.E.W. FOR 6" & 7" PVMT. & 15' O.C.E.W. FOR 5" PVMT. EXPANSION JOINTS SHALL BE INSTALLED AT A MAXIMUM SPACING OF NINETY FEET (90'). LEVEL UP SAND WILL NOT BE ALLOWED UNDER CONCRETE PAVING. PAVEMENT TO BE POURED IN 30' STRIPS MAX. OR PUMPED.
- CONTRACTOR TO PROVIDE TWO YEAR MAINTENANCE BOND ON CONCRETE PAVEMENT.
- ALL FILL COMPACTION TO BE WITH SHEEPS FOOT ROLLER.

**LEGEND**

- 6" 3,600 PSI REINFORCED CONCRETE PVMT.
- MIN. 6 SACK MACHINE FINISH/6.5 SACK HAND FINISH
- REMOVE EXISTING PAVEMENT

**MEP SLEEVING NOTES BY SYMBOL 'O'**

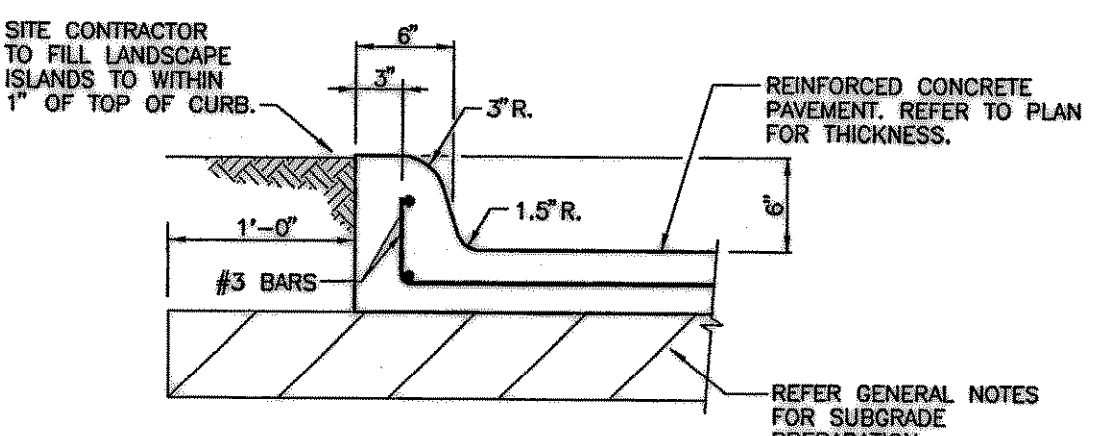
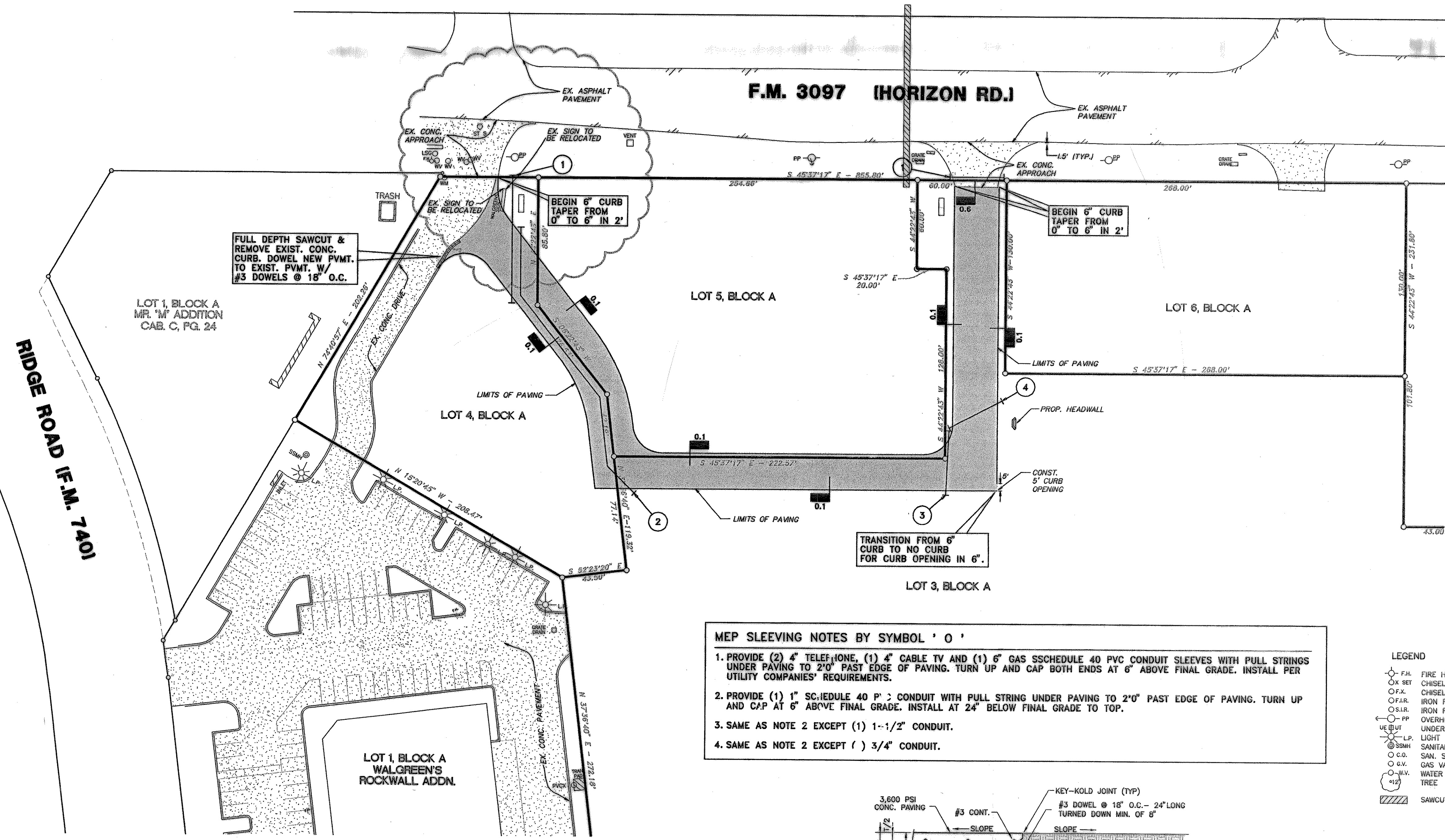
- PROVIDE (2) 4" TELEPHONE, (1) 4" CABLE TV AND (1) 6" GAS SCHEDULE 40 PVC CONDUIT SLEEVES WITH PULL STRINGS UNDER PAVING TO 2'0" PAST EDGE OF PAVING. TURN UP AND CAP BOTH ENDS AT 6" ABOVE FINAL GRADE. INSTALL PER UTILITY COMPANIES' REQUIREMENTS.
- PROVIDE (1) 1" SCHEDULE 40 PVC CONDUIT WITH PULL STRING UNDER PAVING TO 2'0" PAST EDGE OF PAVING. TURN UP AND CAP AT 6" ABOVE FINAL GRADE. INSTALL AT 24" BELOW FINAL GRADE TO TOP.
- SAME AS NOTE 2 EXCEPT (1) 1-1/2" CONDUIT.
- SAME AS NOTE 2 EXCEPT (1) 3/4" CONDUIT.

**LEGEND**

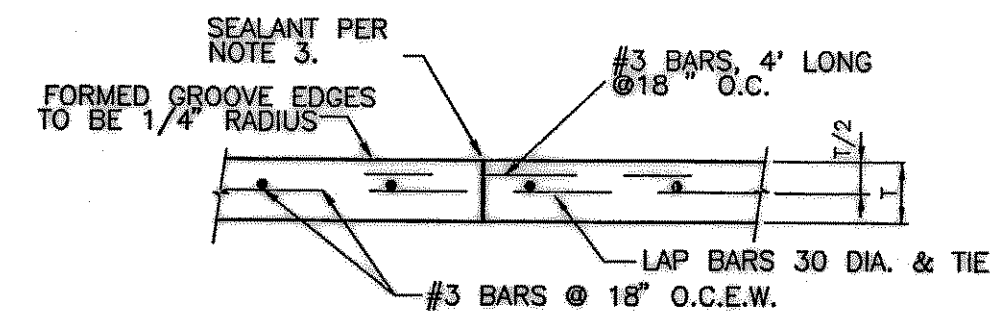
- F.H. FIRE HYDRANT
- Ox SET CHISELED "X" SET
- O.F.R. IRON ROD FOUND (SIZE AS NOTED)
- O.S.R. IRON ROD SET (SIZE AS NOTED)
- O.P.P. OVERHEAD UTILITY POLE W/ GUY
- U.E. UNDERGROUND ELECTRIC OR TELEPHONE
- L.P. LIGHT POLE (EX)
- S.M.H. SANITARY SEWER MANHOLE (EX)
- O.C.O. SAN. SWR. CLEAN OUT (EX)
- O.G.V. GAS VALVE (EX)
- O.W.V. WATER VALVE (EX)
- TREE
- SAWCUT

**BENCH MARK:**

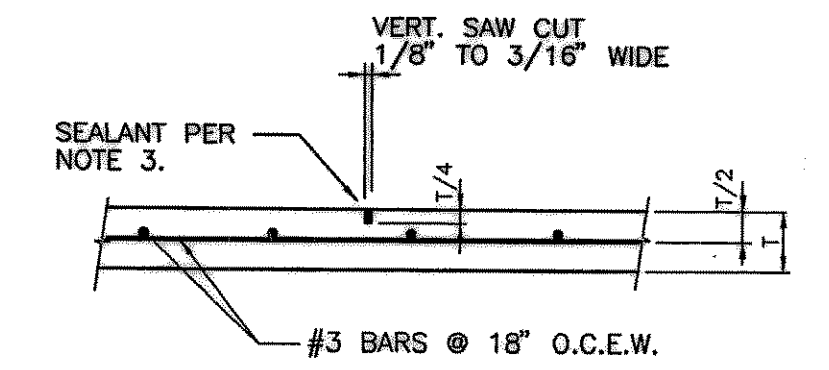
BOX CUT IN NW CURB RETURN AT THE INTERSECTION OF WESTWOOD AND ROCKWALL PARKWAY. ELEVATION = 537.56



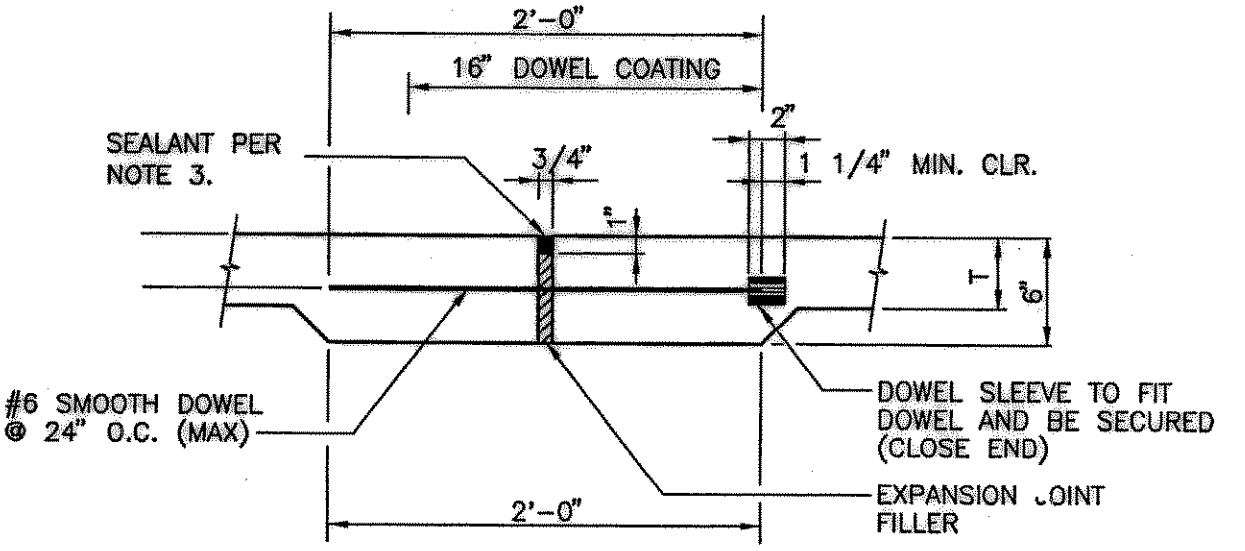
**0.1 INTEGRAL CURB DETAIL**  
N.T.S.  
(W/CONCRETE PAVEMENT)



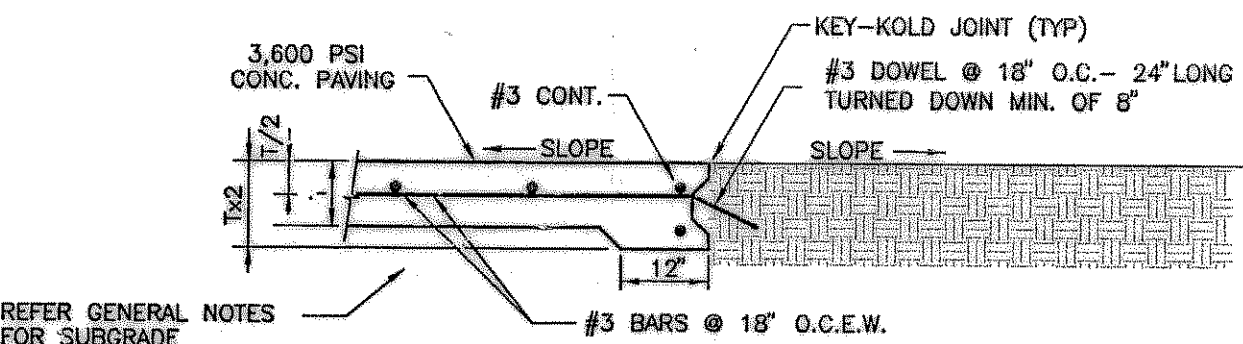
**0.3 CONSTRUCTION JOINT**  
N.T.S.



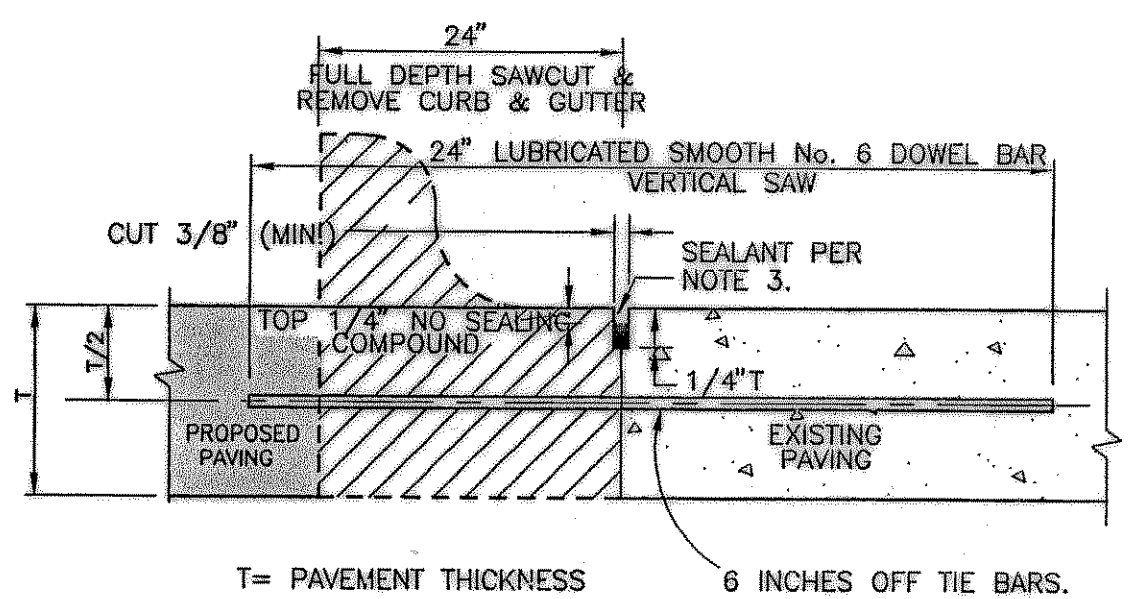
**0.2 CONTROL JOINT**  
N.T.S.



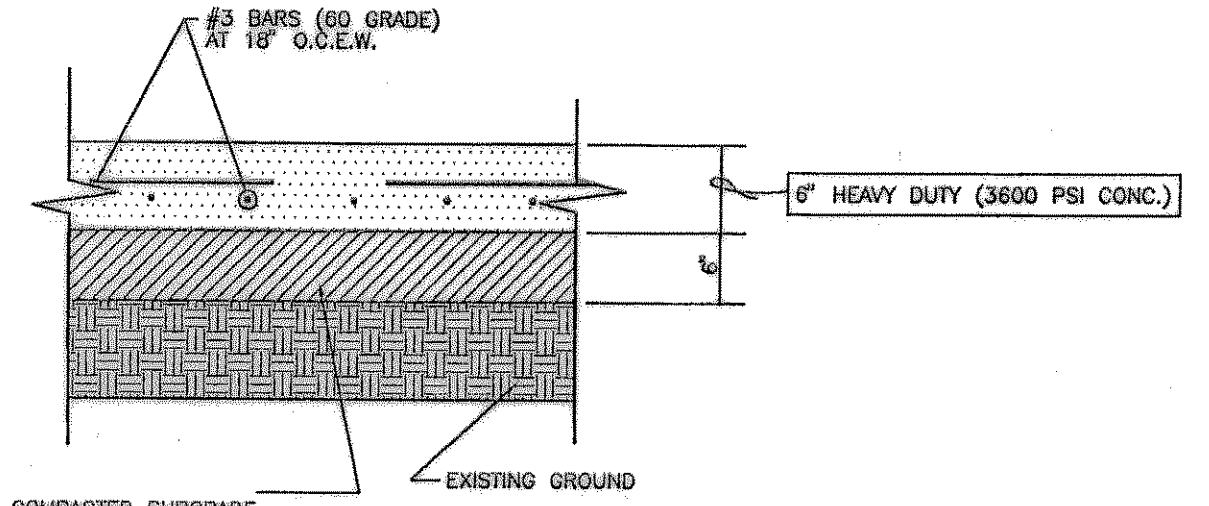
**0.4 EXPANSION JOINT DETAIL**  
N.T.S.



**0.5 FREE EDGE PVMT. DETAIL**  
N.T.S.



**0.6 LONGITUDINAL BUTT JOINT**  
N.T.S.



**LIGHT/HEAVY DUTY CONCRETE PAVEMENT SECTION**  
N.T.S.

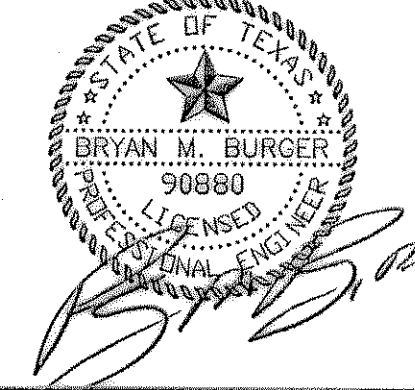
AS BUILT  
DATE 11-6-03



- NOTES:
- NO. 5 SMOOTH DOWEL BAR MAY BE USED IN 5 INCH AND 6 INCH PAVEMENT THICKNESS.
  - LONGITUDINAL BUTT CONSTRUCTION MAY BE UTILIZED IN PLACE OF LONGITUDINAL HINGED (KEYWAY) JOINT AT CONTRACTORS OPTION.
  - DOWEL BARS SHALL BE DRILLED INTO PAVEMENT HORIZONTALLY BY USE OF A MECHANICAL RIG. DRILLING BY HAND IS NOT ACCEPTABLE. PUSHING DOWEL BARS INTO GREEN CONCRETE IS NOT ACCEPTABLE.



THE SEAL APPEARING ON THIS DOCUMENT WAS AUTHORIZED BY BRYAN M. BURGER, P.E. 90880 ON 04/16/03



DESIGN	DRAWN	DATE	SCALE	NOTES	FILE	NO.
BMB	JAL	2/03	1"=50'	D.P.	23008 paving	C-5