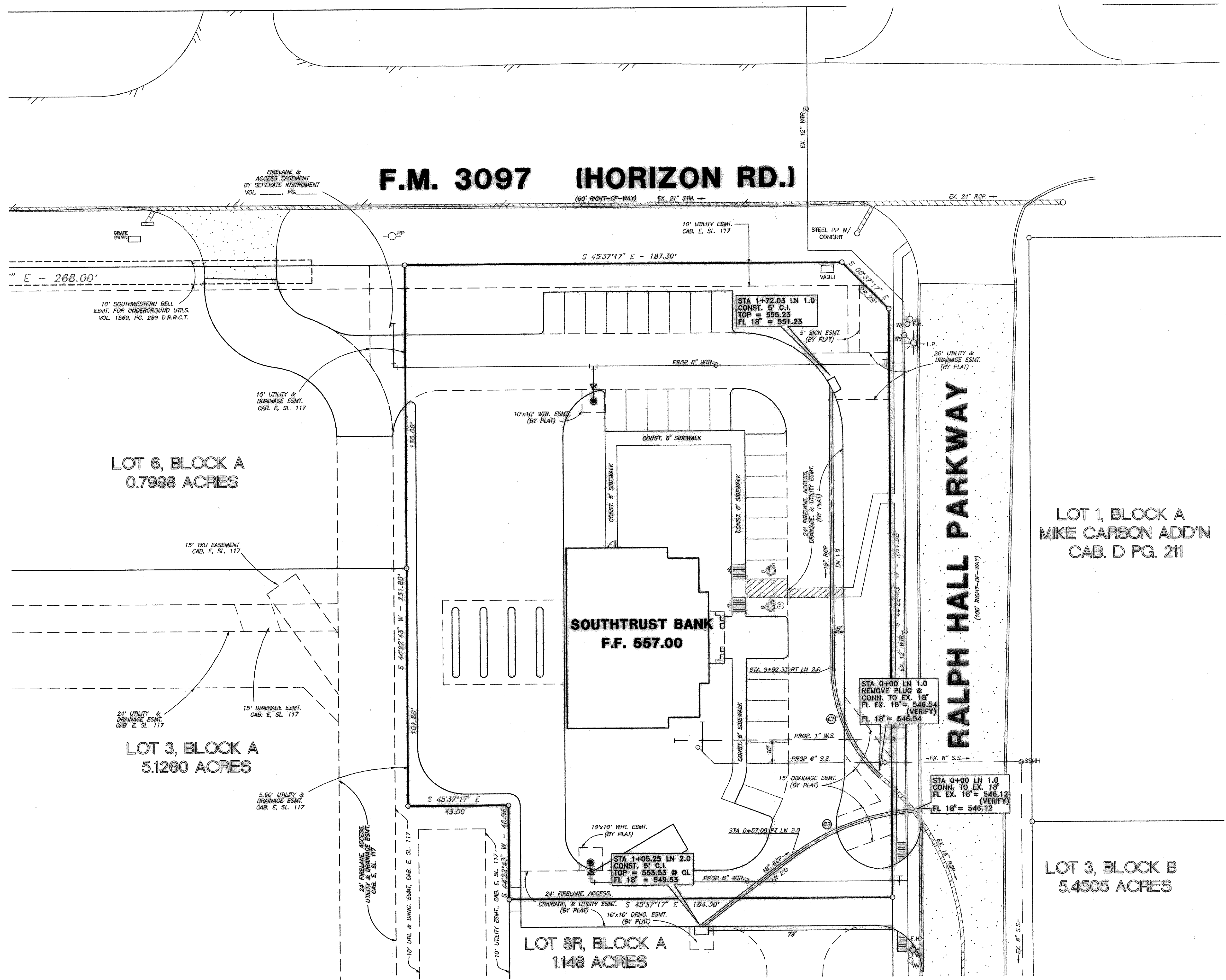


# F.M. 3097 (HORIZON RD.)



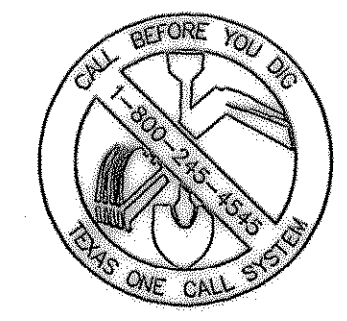
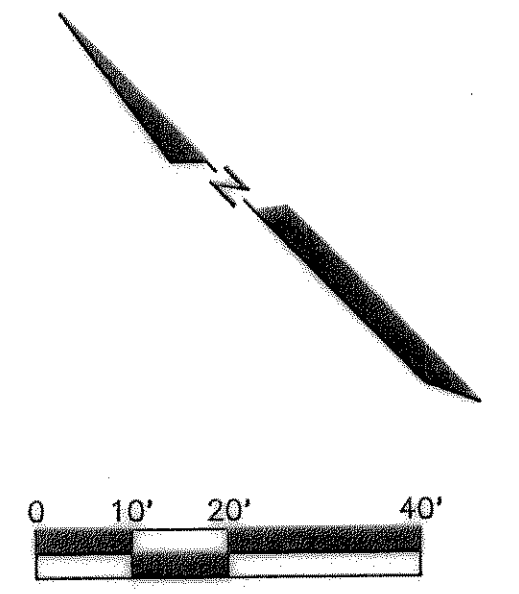
### STORM CENTERLINE CURVE DATA

C1	C2
Δ = 46°07'23"	Δ = 32°42'24"
R = 65.00'	R = 100.00'
L = 52.32'	L = 57.08'
C = 50.92'	C = 56.31'
T = 27.67'	T = 29.34'

### LEGEND

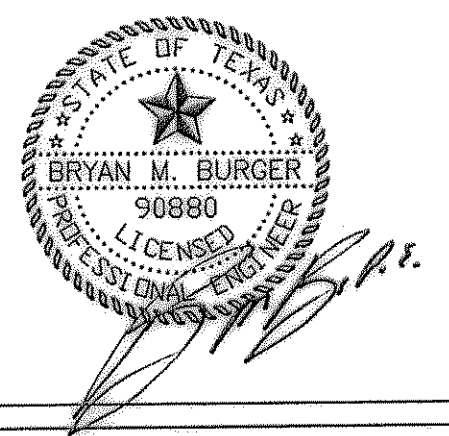
- EXIST. S.S.
- PROP. S.S.
- EXIST. WTR.
- PROP. WTR.
- PROP. STM. SWR.
- EXIST. STM. SEWER
- EXIST. STM. SEWER TO BE ABANDONED
- ⊗ WATER METER
- ⊕ GATE VALVE
- PROP. S.S. M.H.
- ⊙ EXIST. FIRE HYDRANT
- OHE EXIST. OVER HEAD ELECTRIC

NOTE: ALL DIMENSION ARE TO FACE OF CURB UNLESS OTHERWISE NOTED



THE SEAL APPEARING ON THIS DOCUMENT WAS AUTHORIZED BY BRYAN M. BURGER, P.E. 90880 ON 01/09/03

AS BUILT  
DATE 03-03-04



LOT 1, BLOCK A  
MIKE CARSON ADD'N  
CAB. D PG. 211

LOT 6, BLOCK A  
0.7998 ACRES

LOT 3, BLOCK A  
5.1260 ACRES

LOT 3, BLOCK B  
5.4505 ACRES

LOT 8R, BLOCK A  
1.148 ACRES

BENCH MARK:  
BOX CUT IN NW CURB RETURN AT THE INTERSECTION OF WESTWOOD AND ROCKWALL PARKWAY.  
ELEVATION = 537.56

REV.	DATE	REMARKS				
<b>DRAINAGE PLAN</b>						
LOT 7R, BLOCK A						
HORIZON RIDGE ADDITION						
THE CITY OF ROCKWALL, TEXAS						
LAWRENCE A. CATES & ASSOC., INC. 14200 MIDWAY ROAD, SUITE 122 (972) 385-2272		CONSULTING ENGINEERS DALLAS, TEXAS				
DESIGN	DRAWN	DATE	SCALE	NOTES	FILE	NO.
BMB	MCL	02/03	1"=20'	D.P.	23012 DRAINAGE	C-7