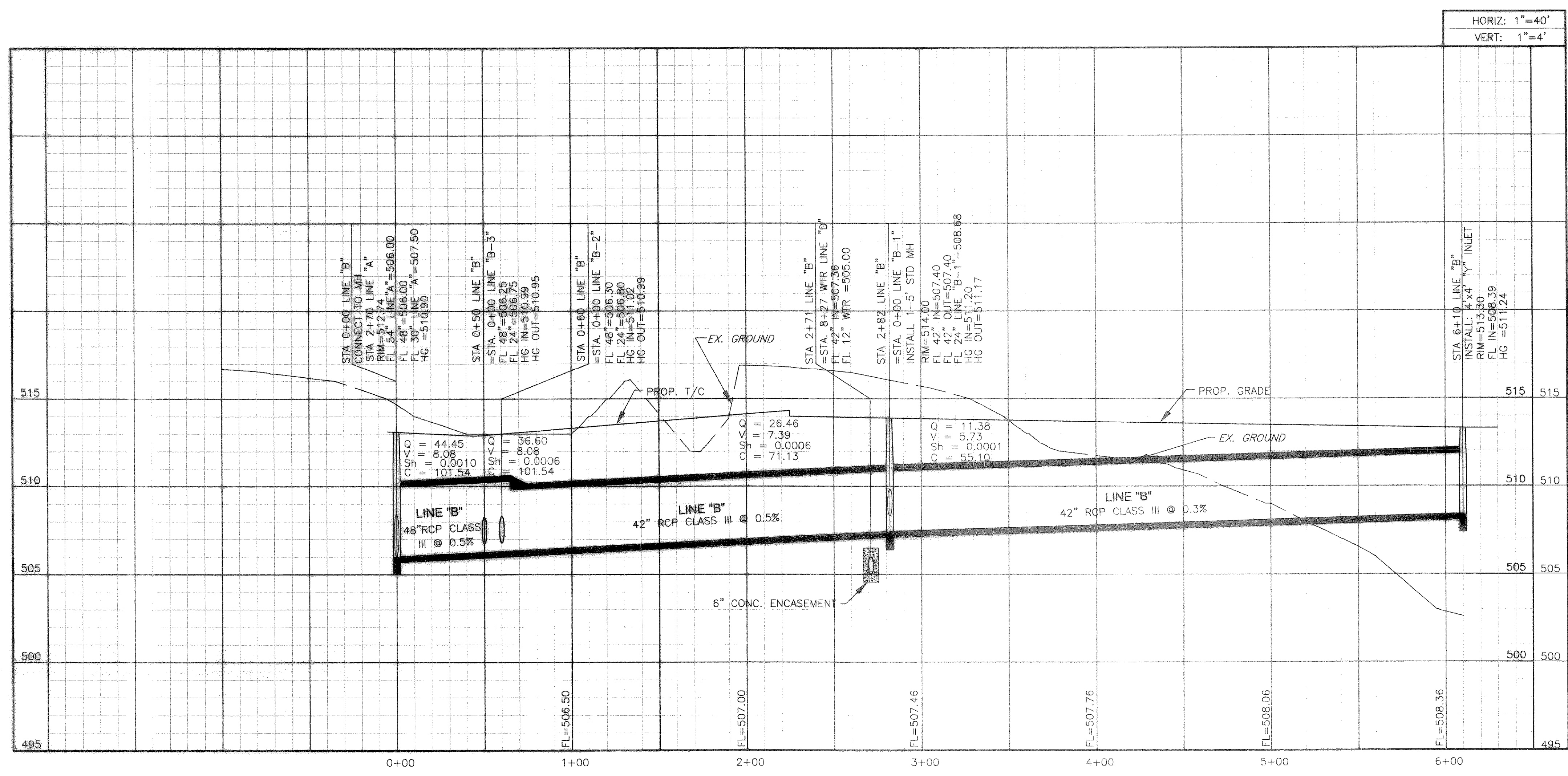


**STORM DRAINAGE SYSTEM DESIGN**

PROJECT: MEDICAL DRIVE  
 STORM DATA REFERENCE: USWS Technical Paper No. 40  
 PIPE MATERIAL: Class III - Reinforced Concrete Pipe

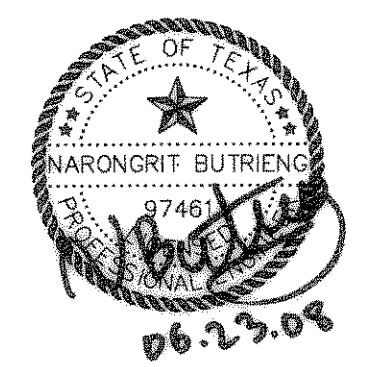
**DRAINAGE SYSTEM: Line "B"**

DRAIN No.	AREA (AC)	RUNOFF COEFF (C)	TIME (MIN)	RAINFL INT (CFS)	Q-100 (CFS)	INLET TYPE	INLET CAP (CFS)	STATION (FT)	LINE LENGTH (FT)	Q-100 IN-PIPE (CFS)	PIPE SIZE (INCH)	PIPE AREA (SF)	PIPE SLOPE (FT/FT)	Flowline IN Elev (FT)	Flowline OUT Elev (FT)	FLOW COEF (m=013)	HGL SLOPE (FT/FT)	TOP OF PIPE Elev (FT)	HGL IN Elev (FT)	HGL OUT Elev (FT)	PIPE VEL (FPS)	PIPE CAP (CFS)	NOTES	
D	1.29	0.90	10.00	9.80	11.38	Y INLET		610						507.90				511.40						
N,K	1.71	0.90	10.00	9.80	15.08	MH	10	282	328	11.38	42	9.62	0.0030	505.82	505.82	1.006	0.0001	509.32	511.20	511.17	7.39	55.10		PARTIAL FLOW
J	1.15	0.90	10.00	9.80	10.14	10" INLET	10	60	222	26.46	42	9.62	0.0050	505.82	505.82	1.006	0.0007	509.32	511.02	510.99	8.08	101.54		PARTIAL FLOW
M	0.89	0.90	10.00	9.80	7.85	10" INLET	10	50	10	36.60	48	12.57	0.0050	505.20	505.20	1.436	0.0006	507.20	510.99	510.95	8.08	101.54		PARTIAL FLOW at Line A
END						MH		0	50	44.45	48	12.57	0.0050	503.34		1.436	0.0010		510.90					



**BENCH MARK**  
 IRON ROD FOUND IN THE R.O.W. OF HORIZON ROAD AND NORTHEAST CORNER OF HORIZON RIDGE MEDICAL PARK ADDITION  
 ELEVATION (m.s.l.) 499.06

**AS BUILT**  
 THIS IS TO CERTIFY THAT CHANGES AND CORRECTIONS HAVE BEEN MADE TO CONFORM TO THE CONTRACTOR'S RECORD OF THIS PROJECT.



**PLAN AND PROFILE  
STORM DRAIN LINE "B"**

HORIZON RIDGE MEDICAL PARK  
CITY OF ROCKWALL, TEXAS

**PSA ENGINEERING**  
17819 DAVENPORT ROAD, SUITE 215 DALLAS, TX 75262 (972) 248-9651

DESIGN	DRAWN	DATE	SCALE	CHECK	FILE	NO.
PSA	PSA	06/23/08	AS SHOWN	PSS	2616.HRM	C-9