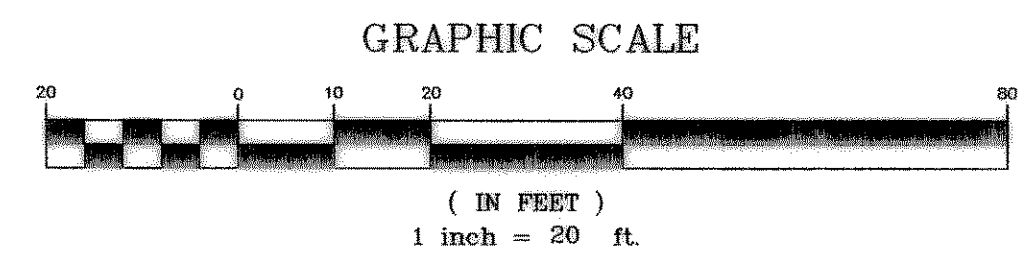


DOUPHRATE & ASSOCIATES, INC.
 ENGINEERING - PROJECT MANAGEMENT - SURVEYING
 2235 RIDGE RD., # 200 ROCKWALL, TEXAS 75087
 PHONE: (972)771-9004 FAX: (972)771-9005

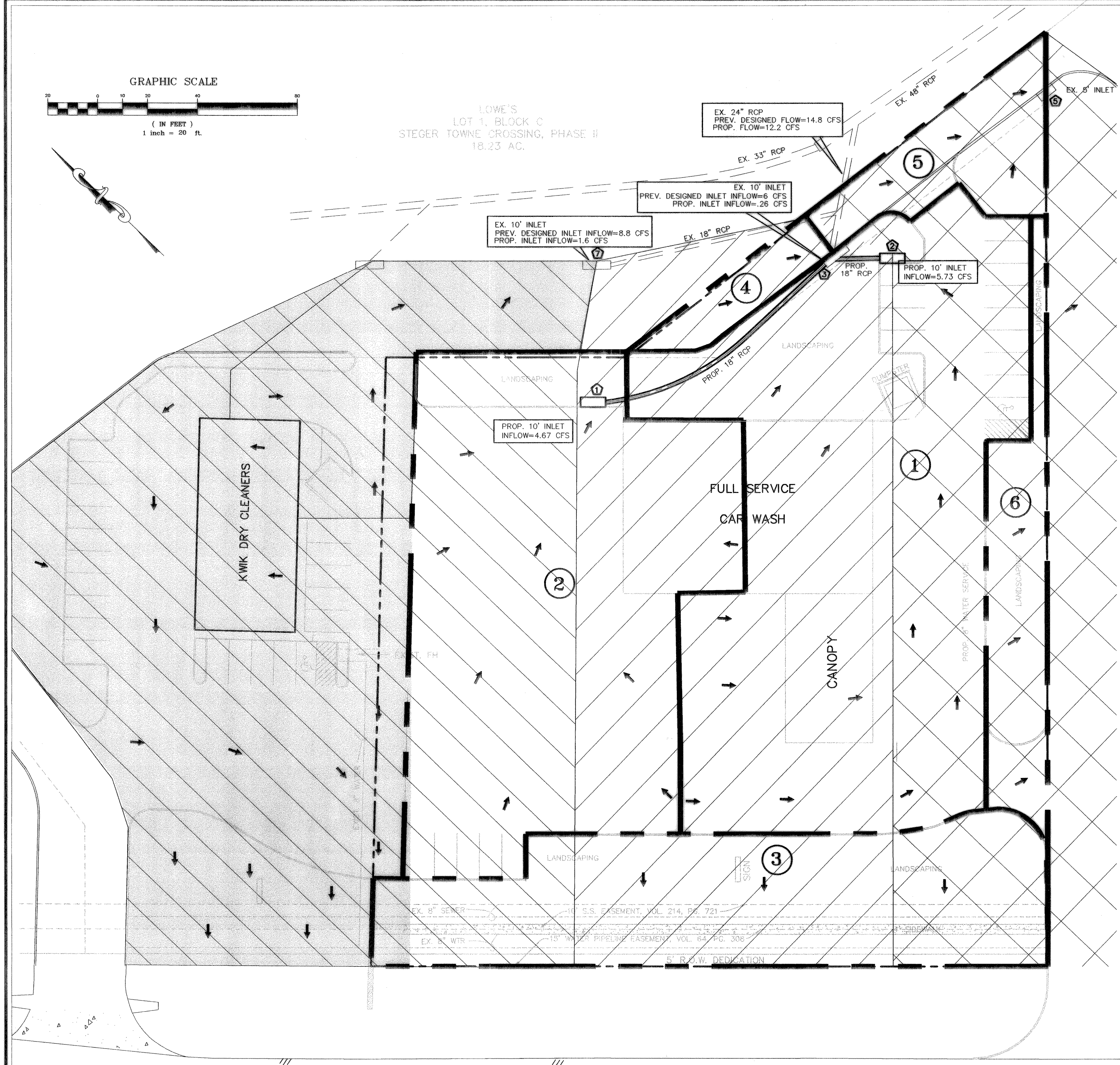
DRAINAGE AREA MAP
 HORIZON CARWASH ADDITION
 CITY OF ROCKWALL
 ROCKWALL COUNTY, TEXAS

REVISIONS PER CITY COMMENTS 6/28/01
 REVISIONS PER CLIENT COMMENTS 4/6/02

REVISION
 W.L.D. CHECKED
 K.E.B. DRAWN
 5-01 DATE
 0031DAM PROJECT
 3 OF



LOWE'S LOT 1, BLOCK C
 STEGER TOWNE CROSSING, PHASE II
 18.23 AC.



AREA	ACRES	C	I ₁₀₀	Q ₁₀₀
1	0.65	.90	9.8	5.73
2	0.53	.90	9.8	4.67
3	0.32	.90	9.8	2.82
4	0.03	.90	9.8	0.26
5	0.08	.90	9.8	0.70
6	0.09	.90	9.8	0.79

EX. 4'X4' WYE INLET

- LOWE'S DRAINAGE AREA #13 WHICH WAS ENGINEERED BY LAWRENCE CATES & ASSOC. TO FLOW INTO INLET #7 WITH A FLOW OF 8.8 CFS (SEE SHT. C-12 OF THE LOWE'S PLANS)
- LOWE'S DRAINAGE AREA #14 WHICH WAS ENGINEERED BY LAWRENCE CATES & ASSOC. TO FLOW INTO INLET #3 WITH A FLOW OF 6.0 CFS (SEE SHT. C-12 OF THE LOWE'S PLANS)
- LOWE'S DRAINAGE AREA #22 WHICH WAS ENGINEERED BY LAWRENCE CATES & ASSOC. TO FLOW INTO INLET #5 & #6 WITH A FLOW OF 16.5 CFS (SEE SHT C-12 OF THE LOWE'S PLANS)
- CLEANER'S DRAINAGE AREA WHICH WAS ENGINEERED BY DOUPHRATE & ASSOC. TO FLOW 1.6 CFS INTO INLET #7 AND THE REST OF AREA INTO DETENTION AREA THEN TO FM 3097 DITCH
- INLET IDENTIFICATION
- DRAINAGE AREA IDENTIFICATION

REVISION TO CONFORM TO CONSTRUCTION RECORDS.
W.L. Douphrate DATE: 7/17/03