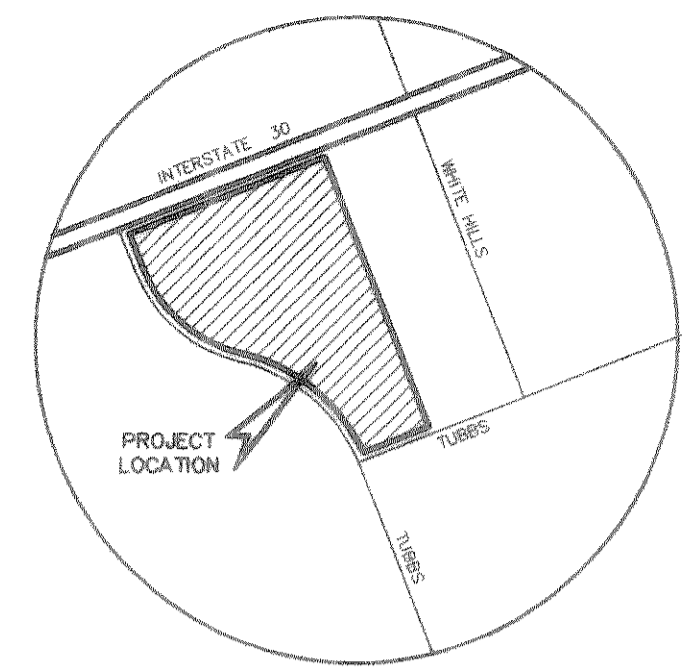
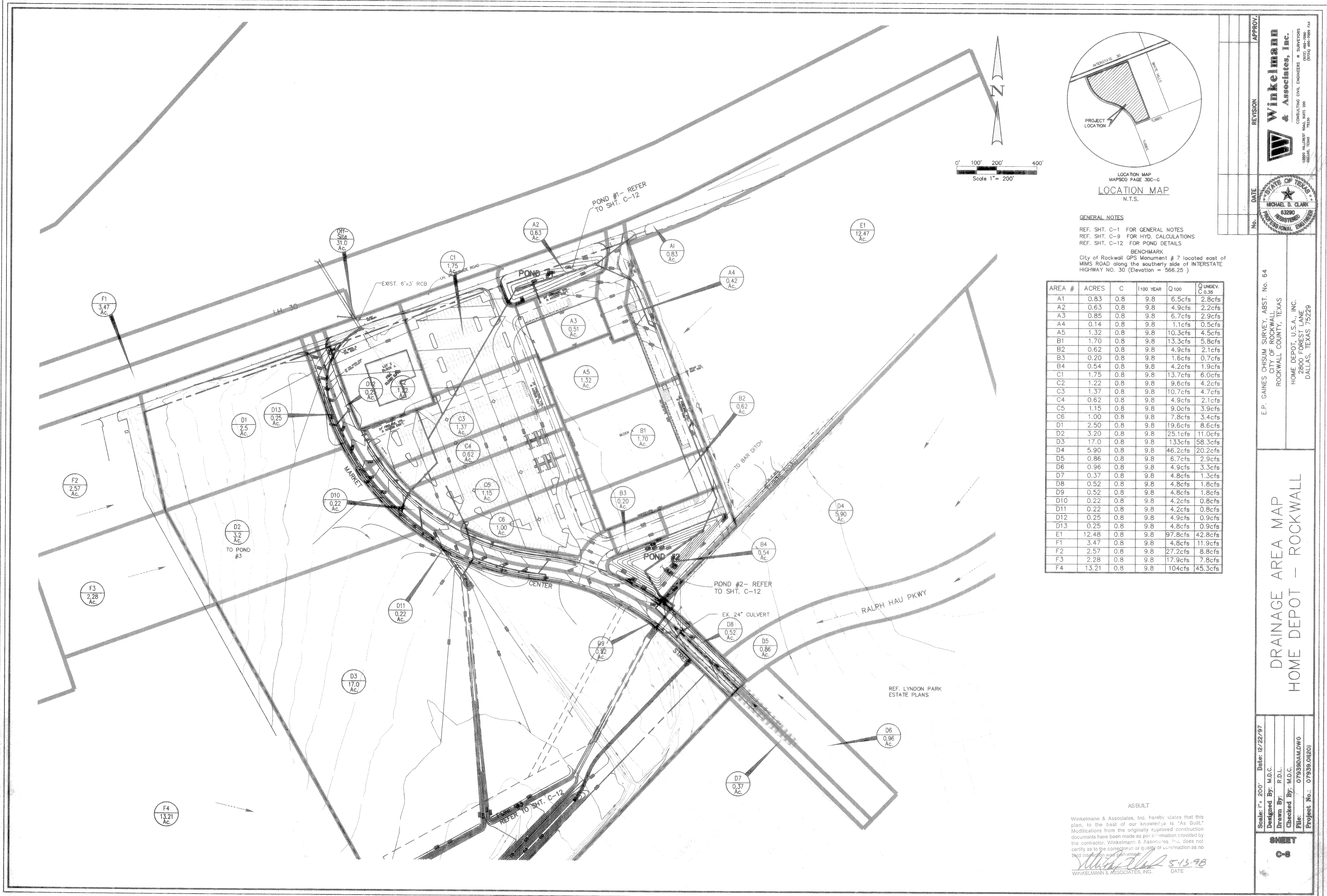


C:\GD\DWG\079390.dwg Tue Dec 23 15:13:33 1997 RDL



LOCATION MAP  
MAPSCO PAGE 30C-G  
N.T.S.

GENERAL NOTES

REF. SHT. C-1 FOR GENERAL NOTES  
REF. SHT. C-9 FOR HYD. CALCULATIONS  
REF. SHT. C-12 FOR POND DETAILS

BENCHMARK

City of Rockwall GPS Monument # 7 located east of MIMS ROAD along the southerly side of INTERSTATE HIGHWAY NO. 30 (Elevation = 566.25 )

AREA #	ACRES	C	1100 YEAR	Q100	Q UNDEV. C.0.35
A1	0.83	0.8	9.8	6.5cfs	2.8cfs
A2	0.63	0.8	9.8	4.9cfs	2.2cfs
A3	0.85	0.8	9.8	6.7cfs	2.9cfs
A4	0.14	0.8	9.8	1.1cfs	0.5cfs
A5	1.32	0.8	9.8	10.3cfs	4.5cfs
B1	1.70	0.8	9.8	13.3cfs	5.8cfs
B2	0.62	0.8	9.8	4.9cfs	2.1cfs
B3	0.20	0.8	9.8	1.6cfs	0.7cfs
B4	0.54	0.8	9.8	4.2cfs	1.9cfs
C1	1.75	0.8	9.8	13.7cfs	6.0cfs
C2	1.22	0.8	9.8	9.6cfs	4.2cfs
C3	1.37	0.8	9.8	10.7cfs	4.7cfs
C4	0.62	0.8	9.8	4.9cfs	2.1cfs
C5	1.15	0.8	9.8	9.0cfs	3.9cfs
C6	1.00	0.8	9.8	7.8cfs	3.4cfs
D1	2.50	0.8	9.8	19.6cfs	8.6cfs
D2	3.20	0.8	9.8	25.1cfs	11.0cfs
D3	17.0	0.8	9.8	133cfs	58.3cfs
D4	5.90	0.8	9.8	46.2cfs	20.2cfs
D5	0.86	0.8	9.8	6.7cfs	2.9cfs
D6	0.96	0.8	9.8	4.9cfs	3.3cfs
D7	0.37	0.8	9.8	4.8cfs	1.3cfs
D8	0.52	0.8	9.8	4.8cfs	1.8cfs
D9	0.52	0.8	9.8	4.8cfs	1.8cfs
D10	0.22	0.8	9.8	4.2cfs	0.8cfs
D11	0.22	0.8	9.8	4.2cfs	0.8cfs
D12	0.25	0.8	9.8	4.9cfs	0.9cfs
D13	0.25	0.8	9.8	4.8cfs	0.9cfs
E1	12.48	0.8	9.8	97.8cfs	42.8cfs
F1	3.47	0.8	9.8	4.8cfs	11.9cfs
F2	2.57	0.8	9.8	27.2cfs	8.8cfs
F3	2.28	0.8	9.8	17.9cfs	7.8cfs
F4	13.21	0.8	9.8	104cfs	45.3cfs

APPROVE: \_\_\_\_\_  
REVISION: \_\_\_\_\_  
DATE: \_\_\_\_\_  
No. \_\_\_\_\_

E.P. GAINES CHISUM SURVEY, ABST. No. 64  
CITY OF ROCKWALL  
ROCKWALL COUNTY, TEXAS  
HOME DEPOT, U.S.A., INC.  
2800 FOREST LANE  
DALLAS, TEXAS 75229

DRAINAGE AREA MAP  
HOME DEPOT - ROCKWALL

Scale: 1" = 200' Date: 12/22/97  
Designed By: M.D.C.  
Drawn By: R.D.L.  
Checked By: M.D.C.  
File: 079390.DWG  
Project No.: 07939.01(20)

ASBUILT  
Winkelmann & Associates, Inc. hereby states that this plan, to the best of our knowledge is "As Built." Modifications from the originally approved construction documents have been made as per information provided by the contractor. Winkelmann & Associates, Inc. does not certify as to the correctness or quality of construction as no field inspection was performed.  
*[Signature]* 5-13-98  
WINKELMANN & ASSOCIATES, INC. DATE