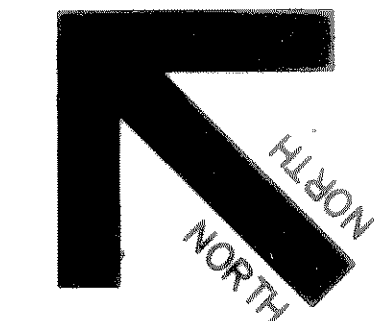
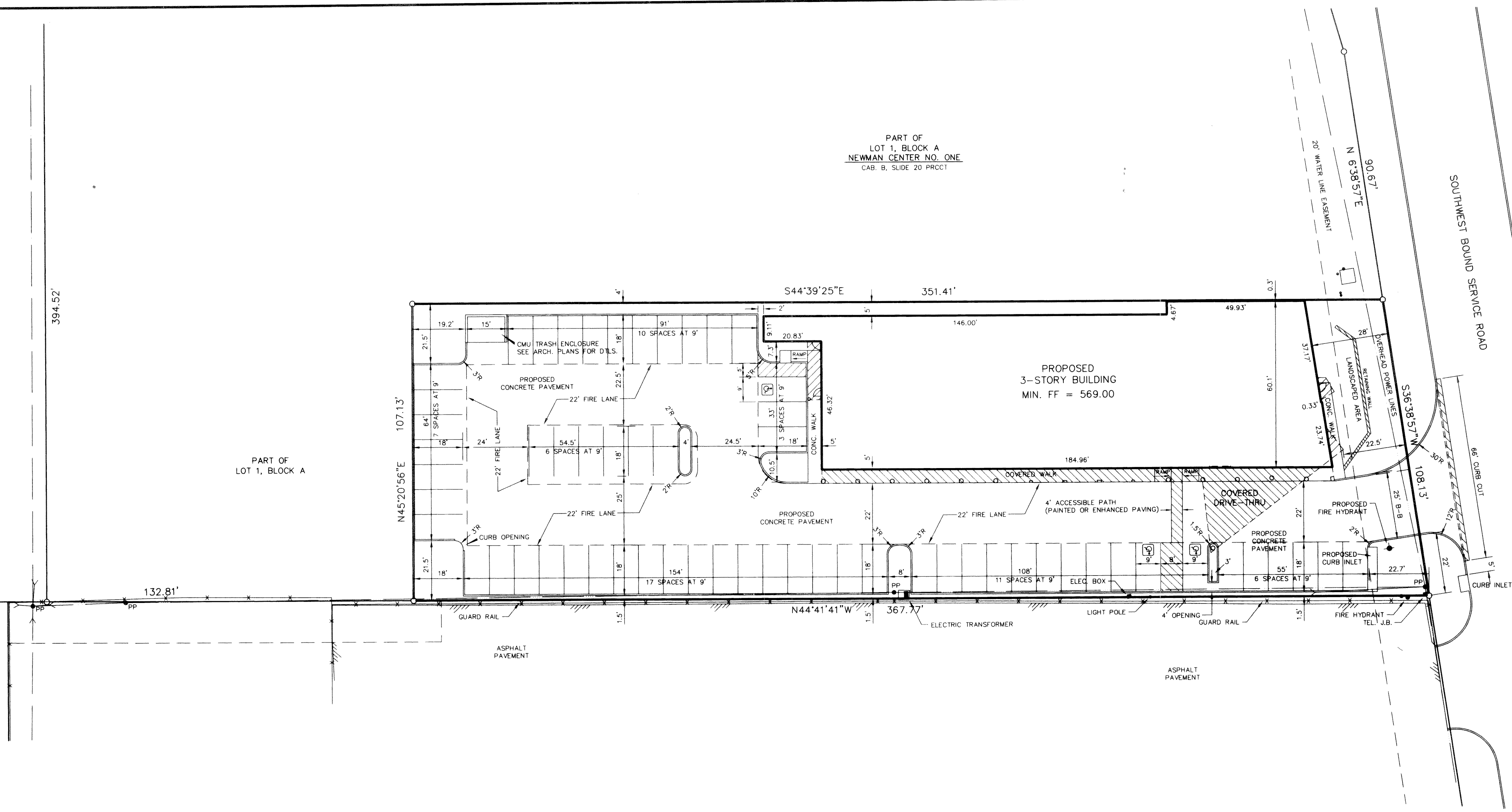


REVISIONS:	
DATE	DESCRIPTION
5-9-97	CITY COMMENTS
5-15-97	CITY COMMENTS
7-15-97	GENERAL SITE REVNS
8-20-97	CITY COMMENTS
9-15-97	ADDED 12" WATER
9-19-97	TXDOT COMMENTS
2-3-98	TAS COMMENTS
2-27-98	MOVED H.C. PARKING



INTERSTATE HIGHWAY NO. 30
 (VARIABLE WIDTH R.O.W.)
 SOUTHWEST BOUND SERVICE ROAD

PART OF
 LOT 1, BLOCK A
 NEWMAN CENTER NO. ONE
 CAB. B. SLIDE 20 PRCCT



PART OF
 LOT 1, BLOCK A

NOTES:

1. ALL CONSTRUCTION TO BE DONE IN STRICT ACCORDANCE TO THESE PLANS AND ALL APPLICABLE MUNICIPAL CODES AND STANDARDS.
2. ALL DIMENSIONS SHOWN ARE TO THE BACK OF CURB UNLESS OTHERWISE NOTED.
3. SEE ARCHITECTURAL PLANS FOR ALL BUILDING DIMENSIONS AND DETAILS.
4. SEE SHEET C-2 FOR ALL PAVING AND GRADING PLANS.
5. SEE SHEET C-5 FOR EROSION CONTROL PLAN AND DETAILS OF THE SITE.
6. SEE SHEET C-6 FOR LOCATIONS AND DETAILS OF UTILITY SERVICES TO BUILDING.
7. SEE SHEET L-1 FOR LANDSCAPE PLAN OF THE SITE.
8. CONTRACTOR MUST OBTAIN ALL NECESSARY PERMITS FROM TEXAS DEPARTMENT OF TRANSPORTATION FOR ANY AND ALL WORK TO BE DONE IN HIGHWAY RIGHT-OF-WAY.

SITE DATA

SITE AREA _____ 38,480 SQUARE FEET
 BUILDING AREA _____ 10,261 SQUARE FEET
 PROPOSED ROOMS _____ 60 ROOMS
 PARKING REQUIRED _____ 60 SPACES
 (1 PER ROOM)
 PARKING PROVIDED _____ 60 SPACES
 (INCLUDING 3 H.C.)

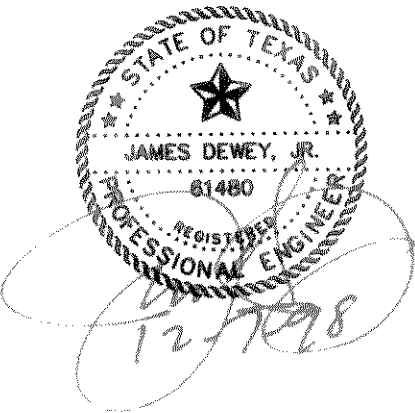
AS-BUILT

AS-BUILTS BY:

JDJR ENGINEERS AND CONSULTANTS, INC.

ENGINEERS • LAND PLANNERS • CAD DESIGNS

2505 Texas Drive Suite 108 Irving, Texas 75038
 Tel: 972-252-6337 (L.O.) Fax: 972-279-8880



PREPARED BY:
DEWEY & ASSOCIATES
 ENGINEERING, SURVEYING
 LAND PLANNING, CAD DESIGNS
 2505 TEXAS DRIVE, SUITE 110 • IRVING, TEXAS 75062 • 972/255-1501

PROJECT:
PROPOSED HOLIDAY INN EXPRESS
 LOT 1, BLOCK A SANSS ADDITION
 INTERSTATE HIGHWAY NO. 30
 ROCKWALL, TEXAS

SHEET TITLE
SITE DIMENSIONAL CONTROL PLAN
 DATE: APRIL 16, 1997
 SCALE: 1" = 20'
 DRAWN BY: SAS (ACAD)
 CHECKED BY: JDJ
 SHEET NO.
C1 OF 6