

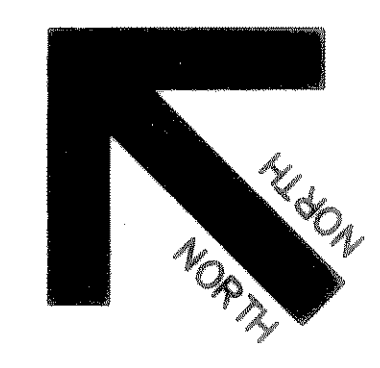
REVISIONS:	
DATE	DESCRIPTION
5-9-97	CITY COMMENTS
5-15-97	CITY COMMENTS
7-15-97	GENERAL SITE REV'NS
8-20-97	CITY COMMENTS
9-15-97	ADDED 12" WATER
9-19-97	TXDOT COMMENTS
2-3-98	ELECTRIC SERVICE

PREPARED BY:  
**DEWEY & ASSOCIATES**  
 ENGINEERING, SURVEYING  
 LAND PLANNING, CAD DESIGNS  
 2505 TEXAS DRIVE, SUITE 110 - IRVING, TEXAS 75062 - 972/255-1501

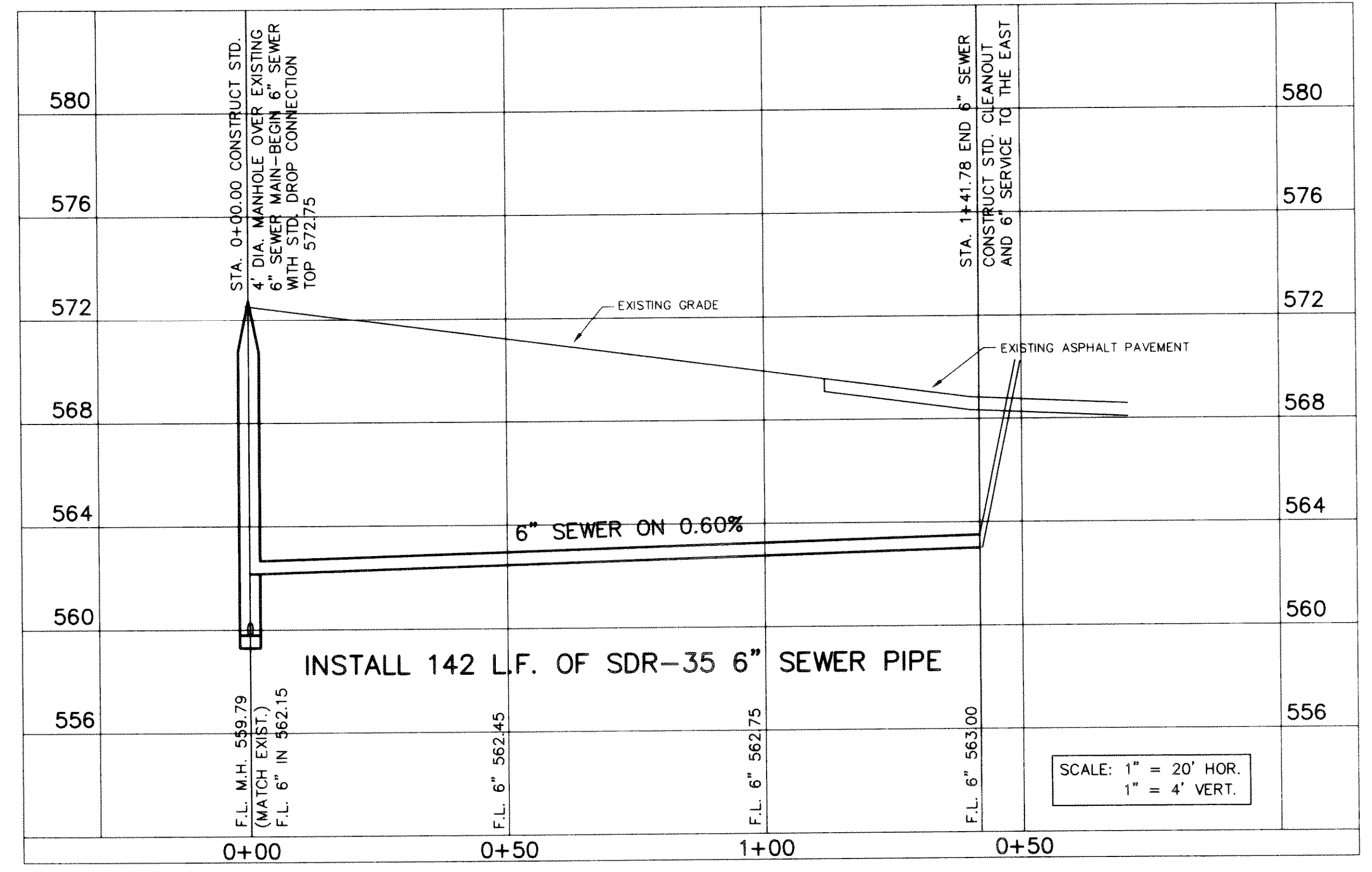
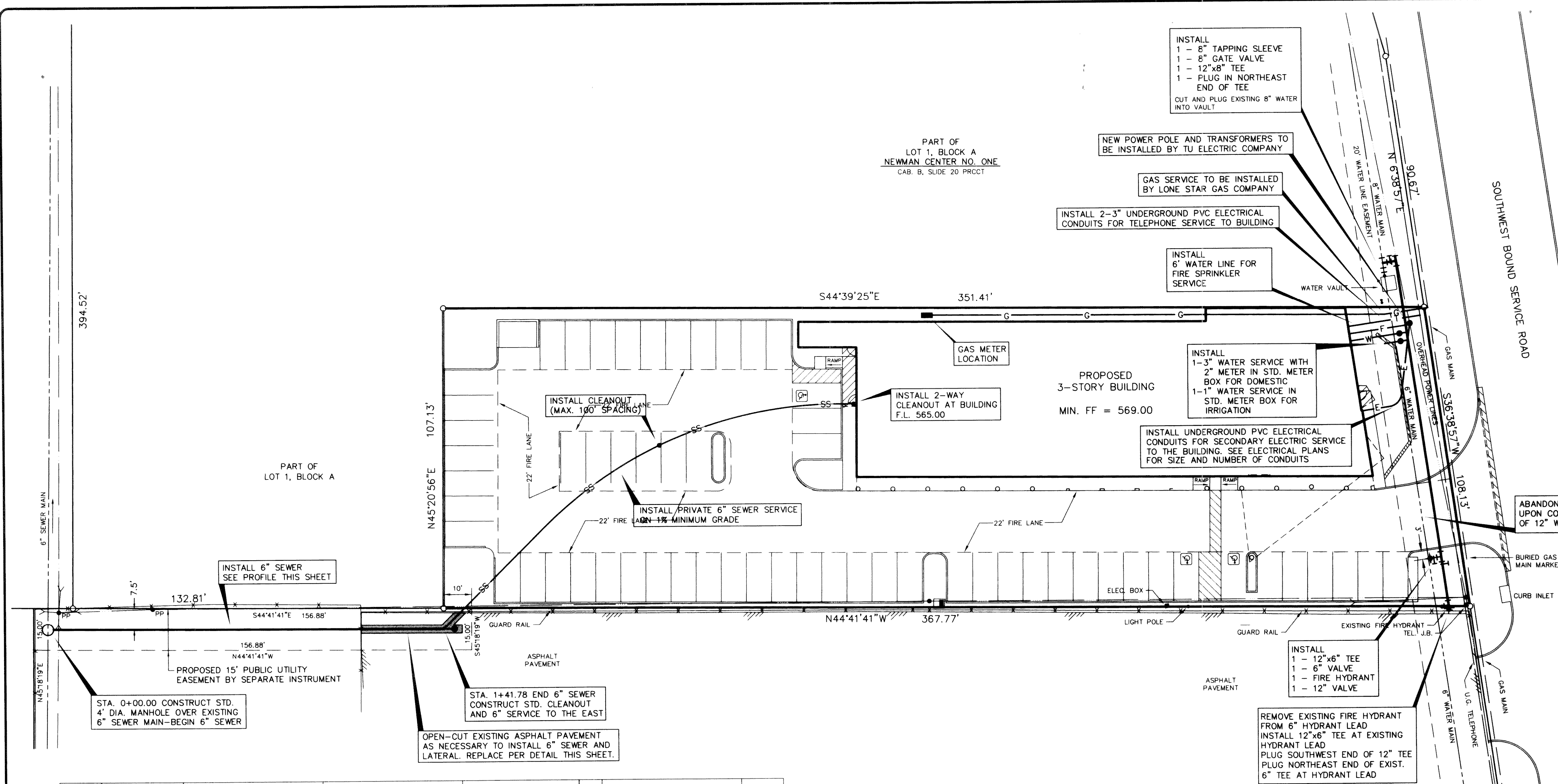
PROJECT:  
**PROPOSED HOLIDAY INN EXPRESS**  
**LOT 1, BLOCK A SANSS ADDITION**  
**INTERSTATE HIGHWAY NO. 30**  
**ROCKWALL, TEXAS**

SHEET TITLE  
**UTILITY SERVICES PLAN**

DATE: APRIL 16, 1997  
 SCALE: 1" = 20'  
 DRAWN BY: SAS (ACAD)  
 CHECKED BY: JDJ  
 SHEET NO.  
**C6 of 6**

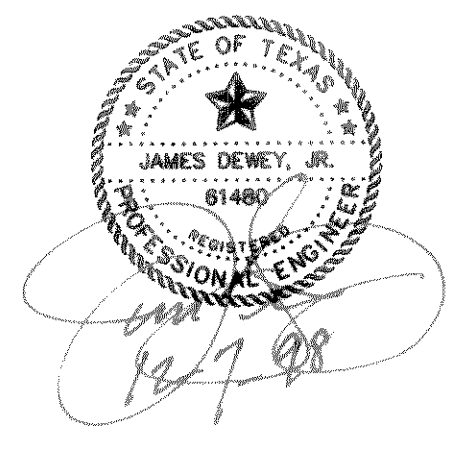


**INTERSTATE HIGHWAY NO. 30**  
 (VARIABLE WIDTH R.O.W.)



- NOTES:
1. ALL CONSTRUCTION SHALL BE DONE IN STRICT CONFORMANCE TO THESE PLANS AND ALL APPLICABLE MUNICIPAL CODES AND STANDARDS.
  2. THE CONTRACTOR SHALL MAKE APPLICATION FOR SERVICES, OBTAIN ALL PERMITS, AND PAY ALL CHARGES, FEES, AND CONNECTION COSTS REQUIRED FOR EACH UTILITY SERVICE. (THESE COSTS AND FEES SHALL NOT BE INCLUDED IN THE BASE BID).
  3. SEE PLUMBING AND ELECTRICAL PLANS FOR EXACT LOCATIONS AND DETAILS OF SERVICES INTO BUILDING.
  4. CONTRACTOR TO VERIFY THE LOCATION AND DEPTH OF ALL EXISTING UTILITIES PRIOR TO CONSTRUCTION.
  5. CONTRACTOR MUST OBTAIN ALL NECESSARY PERMITS FROM TEXAS DEPARTMENT OF TRANSPORTATION FOR ANY AND ALL WORK TO BE DONE IN HIGHWAY RIGHT-OF-WAY.
  6. PLUMBING CONTRACTOR SHALL MAKE ARRANGEMENTS FOR GAS SERVICE INSTALLATION BY LONE STAR GAS COMPANY.

AS-BUILTS BY:  
**JDJR ENGINEERS AND CONSULTANTS, INC.**  
 ENGINEERS • LAND PLANNERS • CAD DESIGNS  
 2505 Texas Drive Suite 110 Irving, Texas 75062  
 Tel. 972-652-8857 LDJ:RJ Fax. 972-275-0800



**AS-BUILT**