

REVISIONS:	
DATE	DESCRIPTION
5-9-97	CITY COMMENTS
5-15-97	CITY COMMENTS
7-15-97	GENERAL SITE REV'NS
8-20-97	CITY COMMENTS
9-15-97	ADDED 12" WATER
9-19-97	TxDOT COMMENTS
1-21-98	AS BUILT
2-27-98	GRADES AT BLDG.

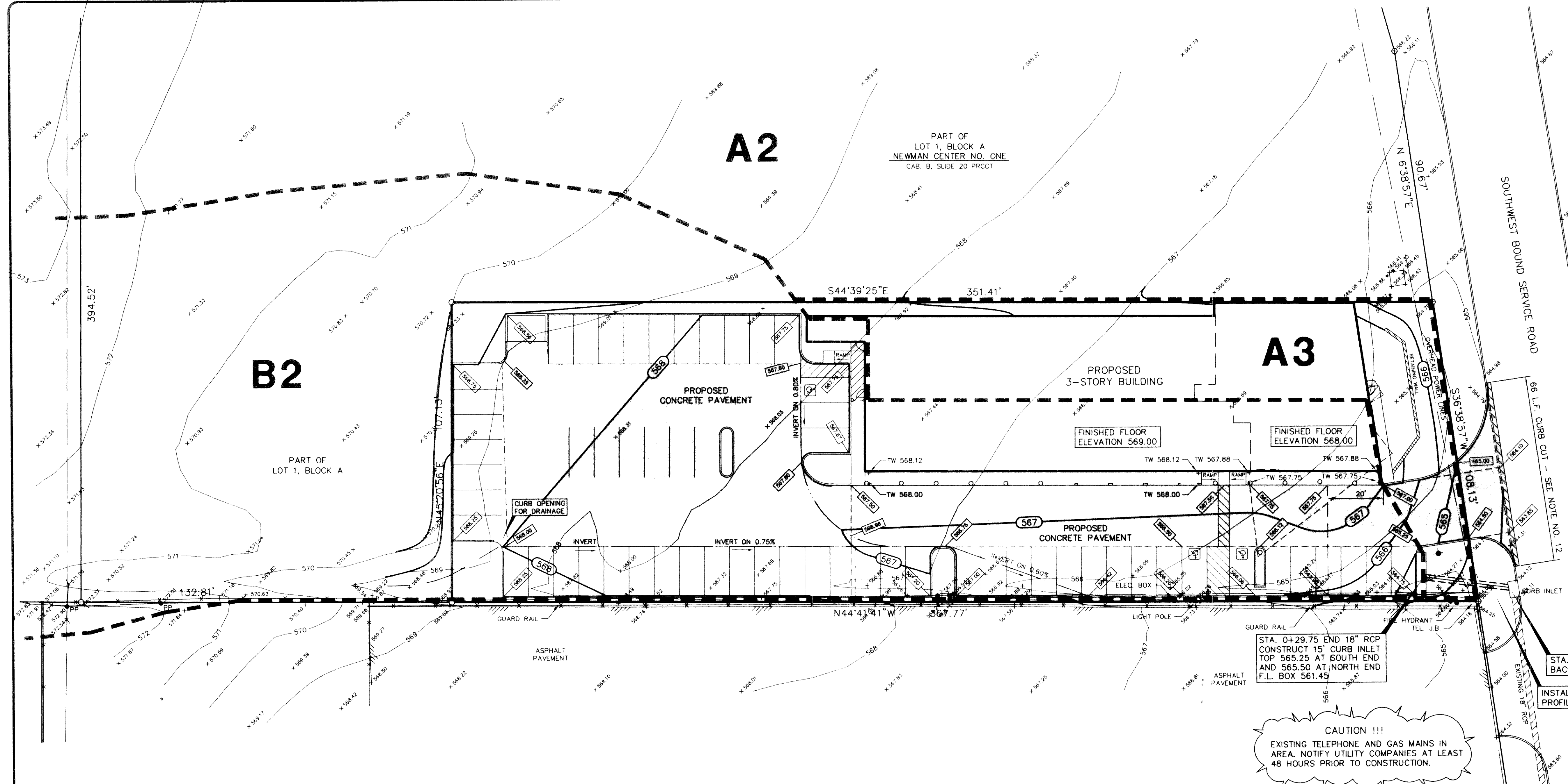
PREPARED BY:
D & A
DEWEY & ASSOCIATES
 ENGINEERING, SURVEYING
 LAND PLANNING, CAD DESIGNS
 2505 TEXAS DRIVE, SUITE 110 • IRVING, TEXAS 75062 • 972/255-1501

PROJECT:
PROPOSED HOLIDAY INN EXPRESS
LOT 1, BLOCK A SANSS ADDITION
INTERSTATE HIGHWAY NO. 30
ROCKWALL, TEXAS

SHEET TITLE
GRADING AND PAVING PLAN
 DATE: APRIL 16, 1997
 SCALE: 1" = 20'
 DRAWN BY: SAS (ACAD)
 CHECKED BY: JDJ
 SHEET NO.
C2 OF **6**
 FILE NO. 948



INTERSTATE HIGHWAY NO. 30
 (VARIABLE WIDTH R.O.W.)



CAUTION !!!
 EXISTING TELEPHONE AND GAS MAINS IN AREA. NOTIFY UTILITY COMPANIES AT LEAST 48 HOURS PRIOR TO CONSTRUCTION.

DRAINAGE DATA		SEE SHEET C3 FOR OFFSITE DRAINAGE AREAS (A1 & B1)			
AREA NO.	ACRES	C	T _c MIN	I ₁₀₀ IN/HR	Q ₁₀₀ CFS
A1	1.27	0.8	10	9.8	9.6
A2	1.56	0.8	10	9.8	12.2
A3	0.21	0.8	10	9.8	1.6
B1	1.09	0.8	10	9.8	8.5
B2	1.16	0.8	10	9.8	9.1

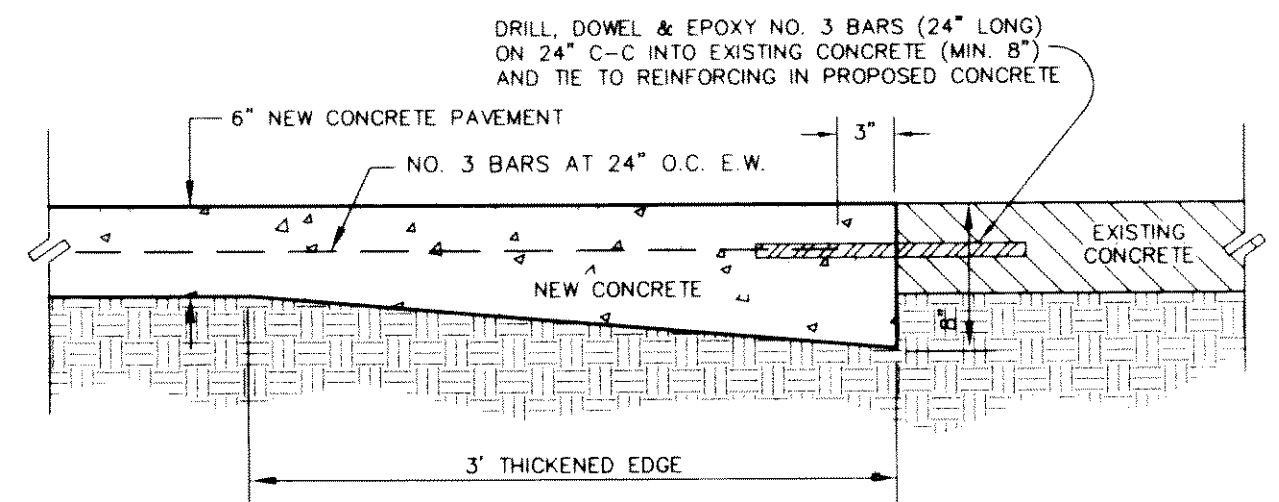
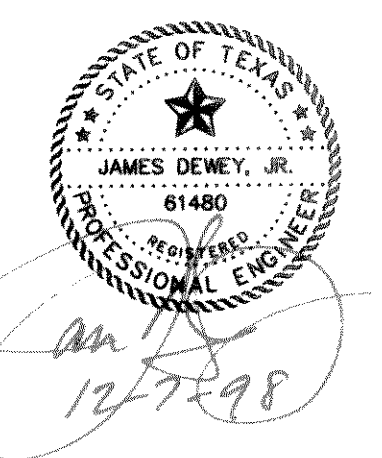
LEGEND	
	EXISTING CONTOUR LINE
	EXISTING SPOT ELEVATION
	PROPOSED SPOT ELEVATION AT GUTTER (TOP OF CURB IS 6" OR 0.5" HIGHER UNLESS SHOWN OTHERWISE)
	PROPOSED CONTOUR LINE
	INVERT OR FLOWLINE
	DRAINAGE DIVIDE LINE
	INDICATES 6" CONCRETE PAVEMENT (ALL OTHER PAVEMENT IS 5" THICK)

- NOTES:
- SEE SHEET C-1 FOR ALL HORIZONTAL CONTROL DIMENSIONS.
 - SEE SHEET C-3 FOR DRAINAGE AREA MAP AND STORM DRAIN PROFILE.
 - SEE SHEET C-4 FOR LOCATION AND DETAILS OF ALL PAVEMENT JOINTS.
 - SEE SHEET C-5 FOR EROSION CONTROL PLAN AND DETAILS OF THE SITE.
 - ALL CONSTRUCTION SHALL BE DONE IN STRICT CONFORMANCE TO THESE PLANS AND ALL APPLICABLE MUNICIPAL CODES AND STANDARDS.
 - ALL SPOT ELEVATIONS ADJACENT TO CURBS ARE GUTTER ELEVATIONS UNLESS OTHERWISE SHOWN.
 - ALL WALKWAYS TO HAVE A MINIMUM OF 1/4" PER FOOT CROSSFALL SLOPE AWAY FROM THE BUILDING.
 - ALL SITE PAVING TO BE DONE IN ACCORDANCE TO THE RECOMMENDATIONS AS OUTLINED IN THE SOILS REPORT FOR THIS SITE.
 - ALL SITE GRADING AND SUBGRADE PREPARATION SHALL BE DONE IN ACCORDANCE TO THE RECOMMENDATIONS AS OUTLINED IN THE SOILS REPORT FOR THIS SITE.
 - ALL LANDSCAPED AREAS TO BE UNIFORMLY GRADED AS SHOWN.
 - CONTRACTOR MUST OBTAIN ALL NECESSARY PERMITS FROM THE STATE HIGHWAY DEPARTMENT FOR ANY AND ALL WORK TO BE DONE IN HIGHWAY RIGHT-OF-WAY.
 - SAW-CUT (FULL DEPTH) ALONG FACE OF CURB, BREAK AND REMOVE EXISTING CURB AND GUTTER AS SHOWN. CONSTRUCT NEW CONCRETE DRIVE APPROACH. SEE NEW CONCRETE TO EXISTING CONCRETE PAVEMENT DETAIL THIS SHEET.

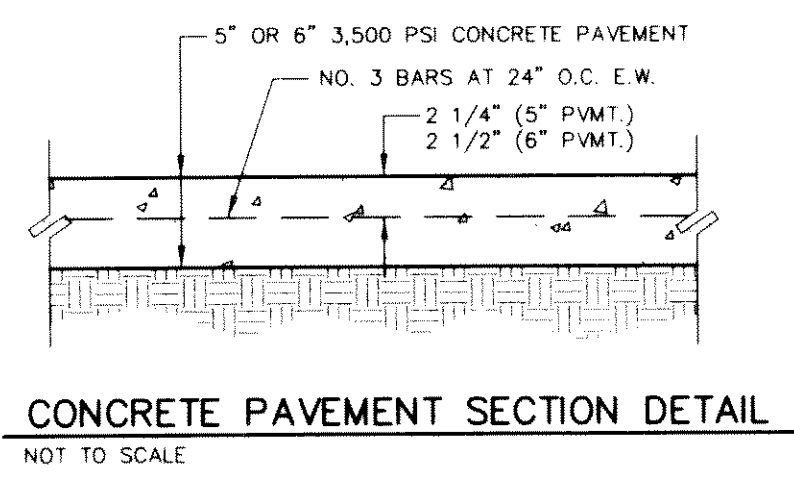
BENCH MARK: TOP FLANGE BOLT ON FIRE HYDRANT BETWEEN "OPEN & ARROW" AT NORTHWEST CORNER OF I-30 AND GREENCREST BLVD.
 ELEVATION 570.25

AS-BUILTS BY:
JDJR ENGINEERS AND CONSULTANTS, INC.
 ENGINEERS • LAND PLANNERS • CAD DESIGNS
 2505 Texas Drive Suite 110 Irving, Texas 75062
 Tel: 972-255-6367 (JDJR) Fax: 972-275-0800

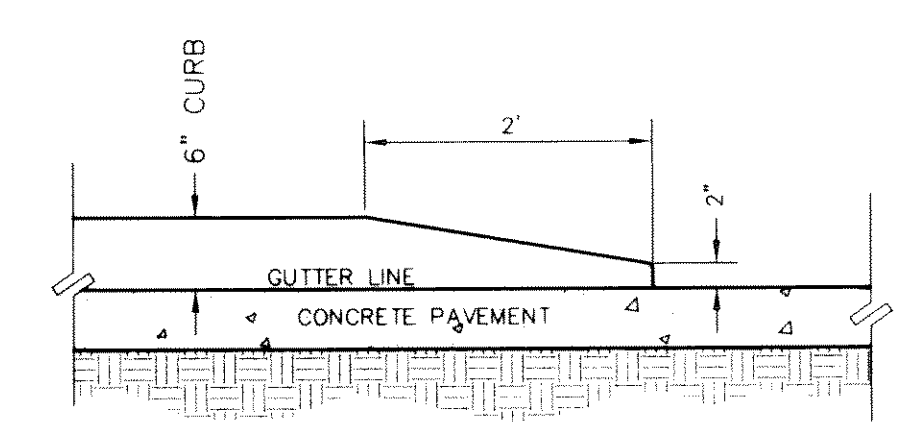
AS-BUILT



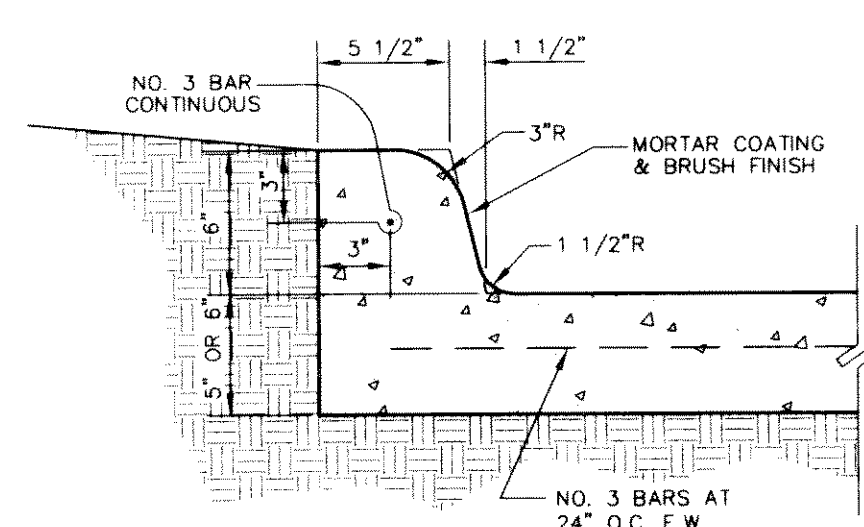
NEW CONCRETE TO EXISTING CONCRETE DETAIL
 NOT TO SCALE



CONCRETE PAVEMENT SECTION DETAIL
 NOT TO SCALE



CURB TERMINAL DETAIL
 NOT TO SCALE



INTEGRAL CURB DETAIL
 NOT TO SCALE

H:\05A\ENGIN\110002.dwg Mod Dec 07 09 24 49 1998 JDJR ENGINEERS & CONSULTANTS • STATION: 1 • JDU