

DESIGN	DATE	CHECKED	DATE	SCALE	JOB	SHEET
JDS	SEP 2001	WAA	101-042	1"=40'	101-042	8
JDS	SEP 2001	WAA	101-042	1"=40'	101-042	8

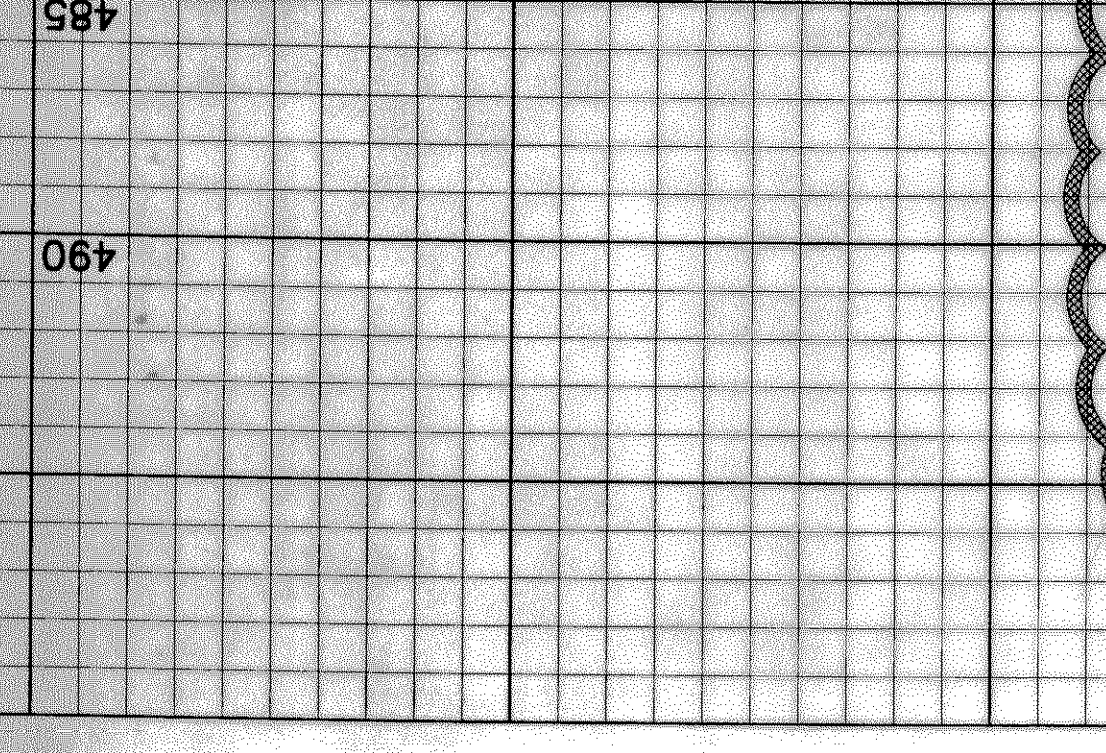
5225 VILLAGE CREEK DR., STE. 200 (972) 931-0894
DOWDEY, ANDERSON & ASSOCIATES, INC.
 ROCKWALL COUNTY, TEXAS

PAVING PLAN & PROFILE
ALLEY 'D' & ALLEY 'D-1'
 HILLCREST SHORES PHASE THREE
 CITY OF ROCKWALL

NO.	DATE	BY	REVISION
1	3/28/02	JDS	CITY MARKUPS
2	6/28/02	JDS	CITY MARKUPS
3	9/4/02	JDS	CITY MARKUPS
4	3/26/03	JDS	ADDED ALLEY "D-1" & RELOCATED FLUME

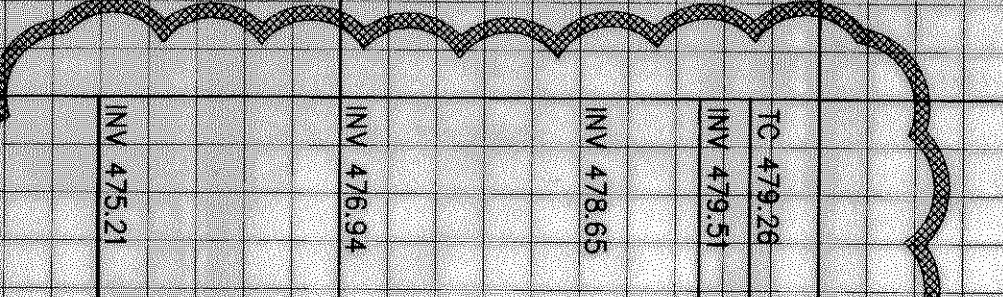
NOTE: THE INTENT OF THE OWNER AND ENGINEER WAS TO CONSTRUCT THE IMPROVEMENTS ACCORDING TO THESE PLANS AS APPROVED BY THE CITY OF ROCKWALL. THE LINE AND GRADES WERE SET ON THE GROUND FOR CONSTRUCTION ACCORDING TO SAID PLANS. WE ARE NOT AWARE OF ANY CHANGES OR REVISIONS TO THESE PLANS DURING CONSTRUCTION EXCEPT AS NOTED ON THE PLANS.

RECORD DRAWINGS March 16, 2004
 NOTE: THE INTENT OF THE OWNER AND ENGINEER WAS TO CONSTRUCT THE IMPROVEMENTS ACCORDING TO THESE PLANS AS APPROVED BY THE CITY OF ROCKWALL. THE LINE AND GRADES WERE SET ON THE GROUND FOR CONSTRUCTION ACCORDING TO SAID PLANS. WE ARE NOT AWARE OF ANY CHANGES OR REVISIONS TO THESE PLANS DURING CONSTRUCTION EXCEPT AS NOTED ON THE PLANS.



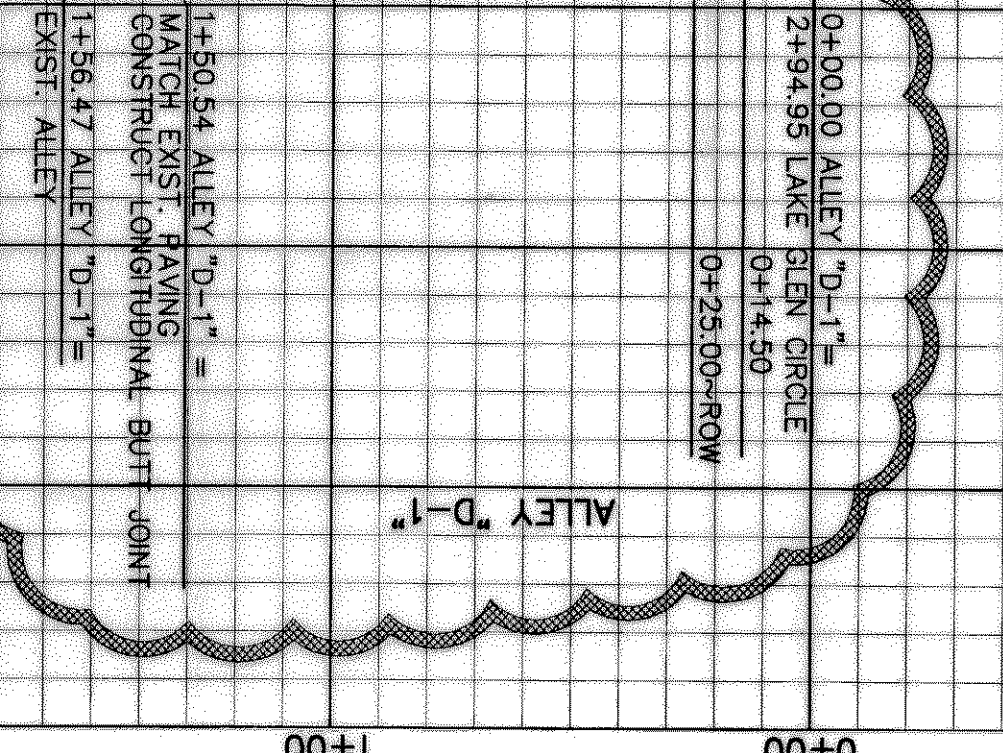
NO.	DATE	BY	REVISION
1	3/28/02	JDS	CITY MARKUPS
2	6/28/02	JDS	CITY MARKUPS
3	9/4/02	JDS	CITY MARKUPS
4	3/26/03	JDS	ADDED ALLEY "D-1" & RELOCATED FLUME

These construction plans were prepared under the responsible supervision of William A. Anderson, Registered Professional Engineer No. 79858

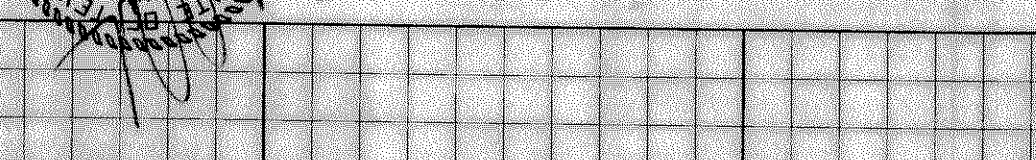


NOTE: THE INTENT OF THE OWNER AND ENGINEER WAS TO CONSTRUCT THE IMPROVEMENTS ACCORDING TO THESE PLANS AS APPROVED BY THE CITY OF ROCKWALL. THE LINE AND GRADES WERE SET ON THE GROUND FOR CONSTRUCTION ACCORDING TO SAID PLANS. WE ARE NOT AWARE OF ANY CHANGES OR REVISIONS TO THESE PLANS DURING CONSTRUCTION EXCEPT AS NOTED ON THE PLANS.

RECORD DRAWINGS March 16, 2004
 NOTE: THE INTENT OF THE OWNER AND ENGINEER WAS TO CONSTRUCT THE IMPROVEMENTS ACCORDING TO THESE PLANS AS APPROVED BY THE CITY OF ROCKWALL. THE LINE AND GRADES WERE SET ON THE GROUND FOR CONSTRUCTION ACCORDING TO SAID PLANS. WE ARE NOT AWARE OF ANY CHANGES OR REVISIONS TO THESE PLANS DURING CONSTRUCTION EXCEPT AS NOTED ON THE PLANS.

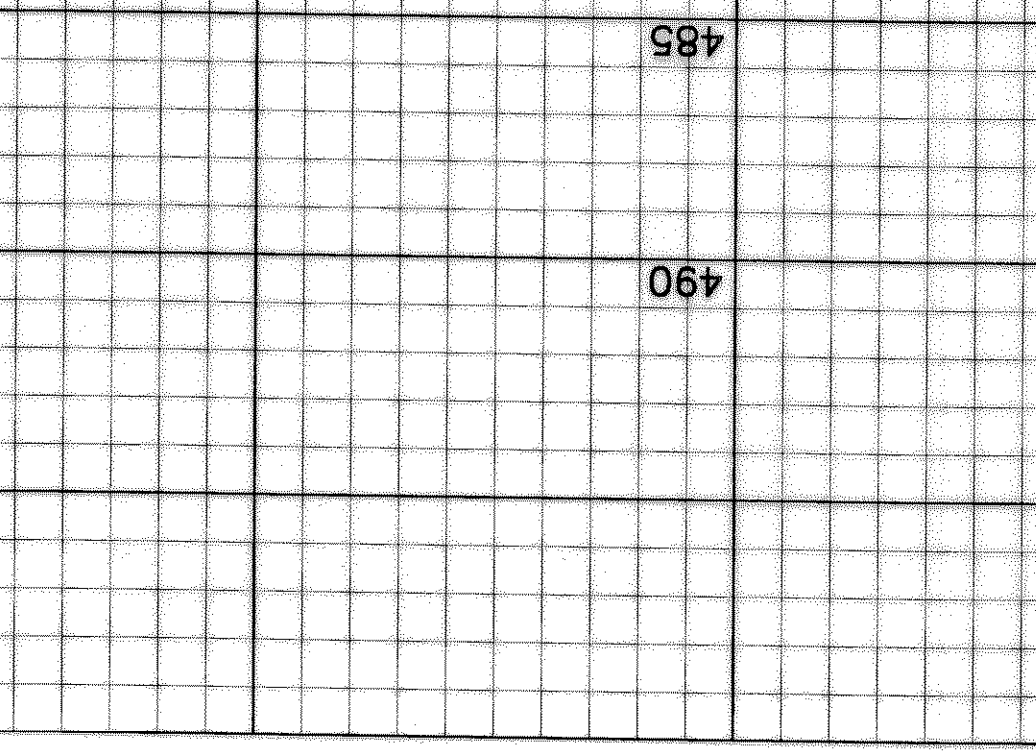


These construction plans were prepared under the responsible supervision of William A. Anderson, Registered Professional Engineer No. 79858

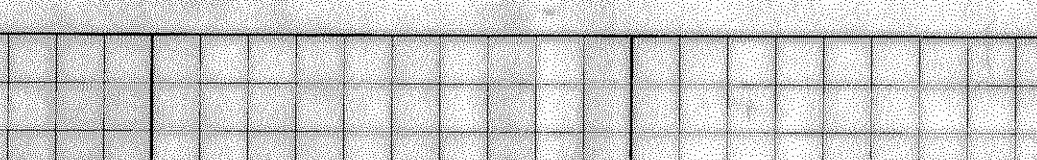


NOTE: THE INTENT OF THE OWNER AND ENGINEER WAS TO CONSTRUCT THE IMPROVEMENTS ACCORDING TO THESE PLANS AS APPROVED BY THE CITY OF ROCKWALL. THE LINE AND GRADES WERE SET ON THE GROUND FOR CONSTRUCTION ACCORDING TO SAID PLANS. WE ARE NOT AWARE OF ANY CHANGES OR REVISIONS TO THESE PLANS DURING CONSTRUCTION EXCEPT AS NOTED ON THE PLANS.

RECORD DRAWINGS March 16, 2004
 NOTE: THE INTENT OF THE OWNER AND ENGINEER WAS TO CONSTRUCT THE IMPROVEMENTS ACCORDING TO THESE PLANS AS APPROVED BY THE CITY OF ROCKWALL. THE LINE AND GRADES WERE SET ON THE GROUND FOR CONSTRUCTION ACCORDING TO SAID PLANS. WE ARE NOT AWARE OF ANY CHANGES OR REVISIONS TO THESE PLANS DURING CONSTRUCTION EXCEPT AS NOTED ON THE PLANS.

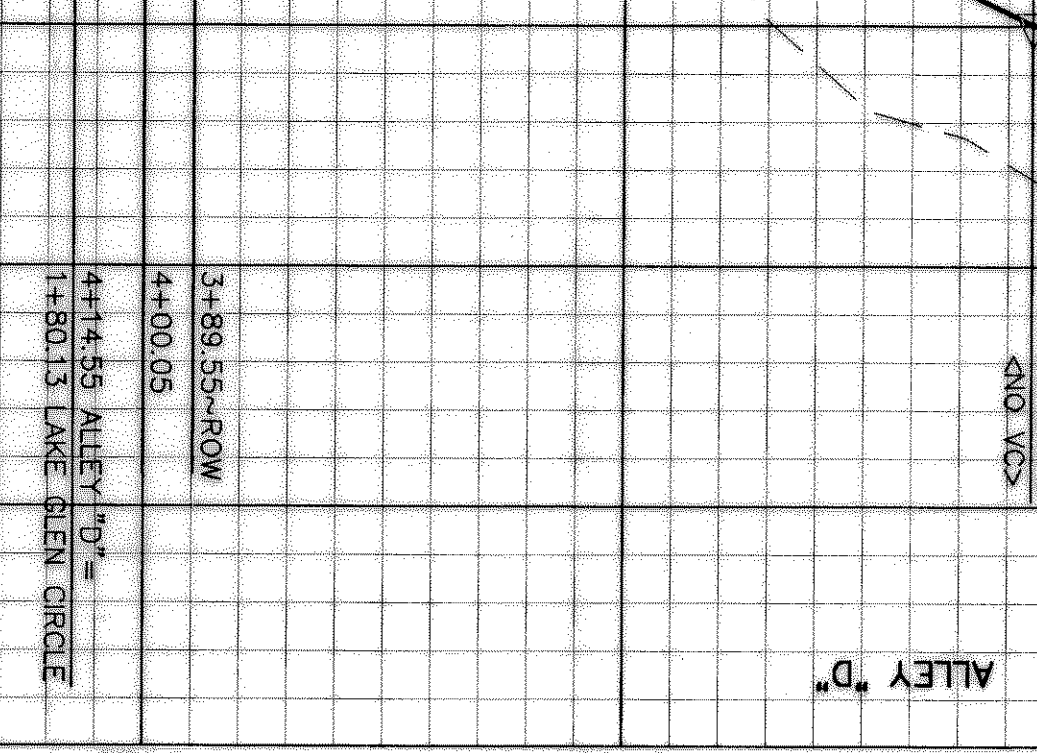


These construction plans were prepared under the responsible supervision of William A. Anderson, Registered Professional Engineer No. 79858

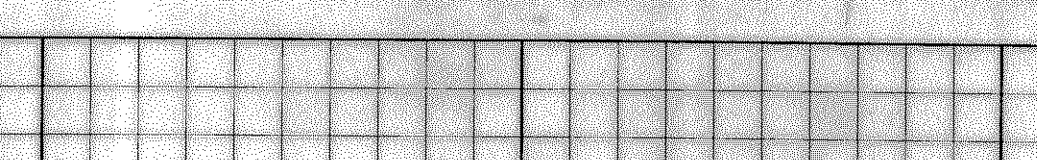


NOTE: THE INTENT OF THE OWNER AND ENGINEER WAS TO CONSTRUCT THE IMPROVEMENTS ACCORDING TO THESE PLANS AS APPROVED BY THE CITY OF ROCKWALL. THE LINE AND GRADES WERE SET ON THE GROUND FOR CONSTRUCTION ACCORDING TO SAID PLANS. WE ARE NOT AWARE OF ANY CHANGES OR REVISIONS TO THESE PLANS DURING CONSTRUCTION EXCEPT AS NOTED ON THE PLANS.

RECORD DRAWINGS March 16, 2004
 NOTE: THE INTENT OF THE OWNER AND ENGINEER WAS TO CONSTRUCT THE IMPROVEMENTS ACCORDING TO THESE PLANS AS APPROVED BY THE CITY OF ROCKWALL. THE LINE AND GRADES WERE SET ON THE GROUND FOR CONSTRUCTION ACCORDING TO SAID PLANS. WE ARE NOT AWARE OF ANY CHANGES OR REVISIONS TO THESE PLANS DURING CONSTRUCTION EXCEPT AS NOTED ON THE PLANS.

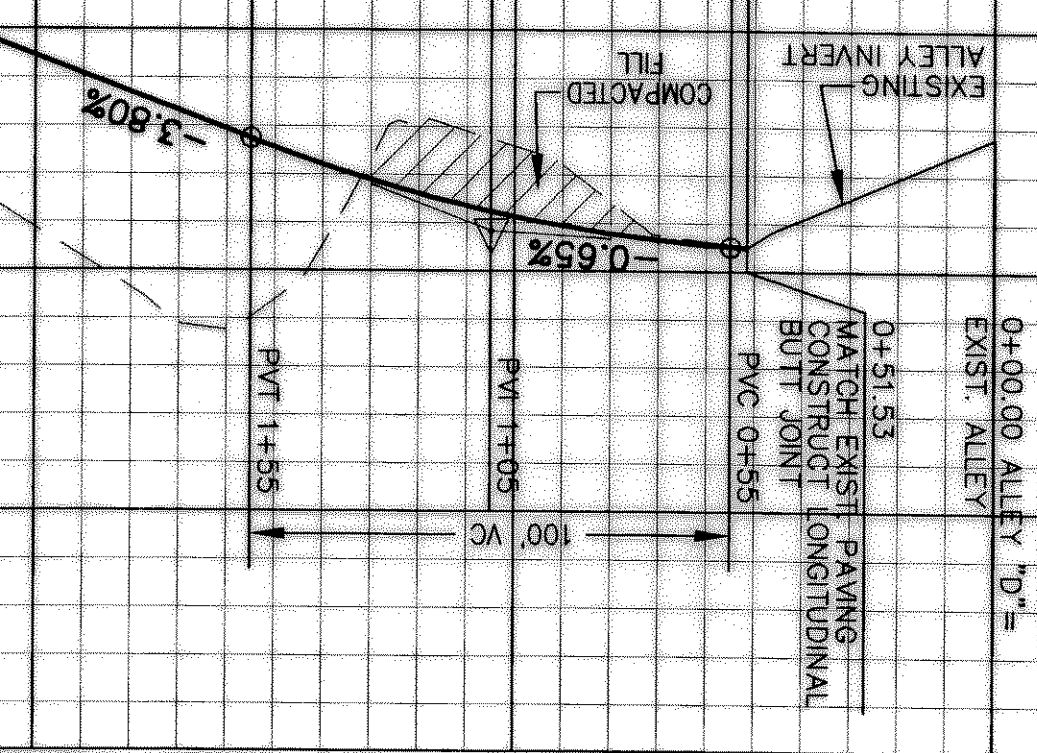


These construction plans were prepared under the responsible supervision of William A. Anderson, Registered Professional Engineer No. 79858

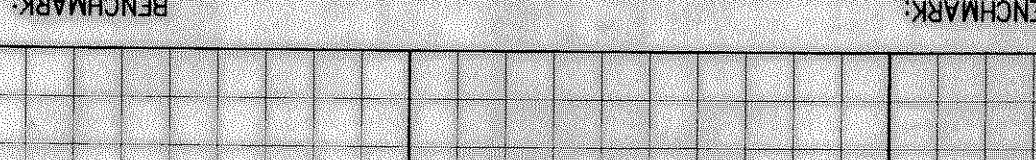


NOTE: THE INTENT OF THE OWNER AND ENGINEER WAS TO CONSTRUCT THE IMPROVEMENTS ACCORDING TO THESE PLANS AS APPROVED BY THE CITY OF ROCKWALL. THE LINE AND GRADES WERE SET ON THE GROUND FOR CONSTRUCTION ACCORDING TO SAID PLANS. WE ARE NOT AWARE OF ANY CHANGES OR REVISIONS TO THESE PLANS DURING CONSTRUCTION EXCEPT AS NOTED ON THE PLANS.

RECORD DRAWINGS March 16, 2004
 NOTE: THE INTENT OF THE OWNER AND ENGINEER WAS TO CONSTRUCT THE IMPROVEMENTS ACCORDING TO THESE PLANS AS APPROVED BY THE CITY OF ROCKWALL. THE LINE AND GRADES WERE SET ON THE GROUND FOR CONSTRUCTION ACCORDING TO SAID PLANS. WE ARE NOT AWARE OF ANY CHANGES OR REVISIONS TO THESE PLANS DURING CONSTRUCTION EXCEPT AS NOTED ON THE PLANS.

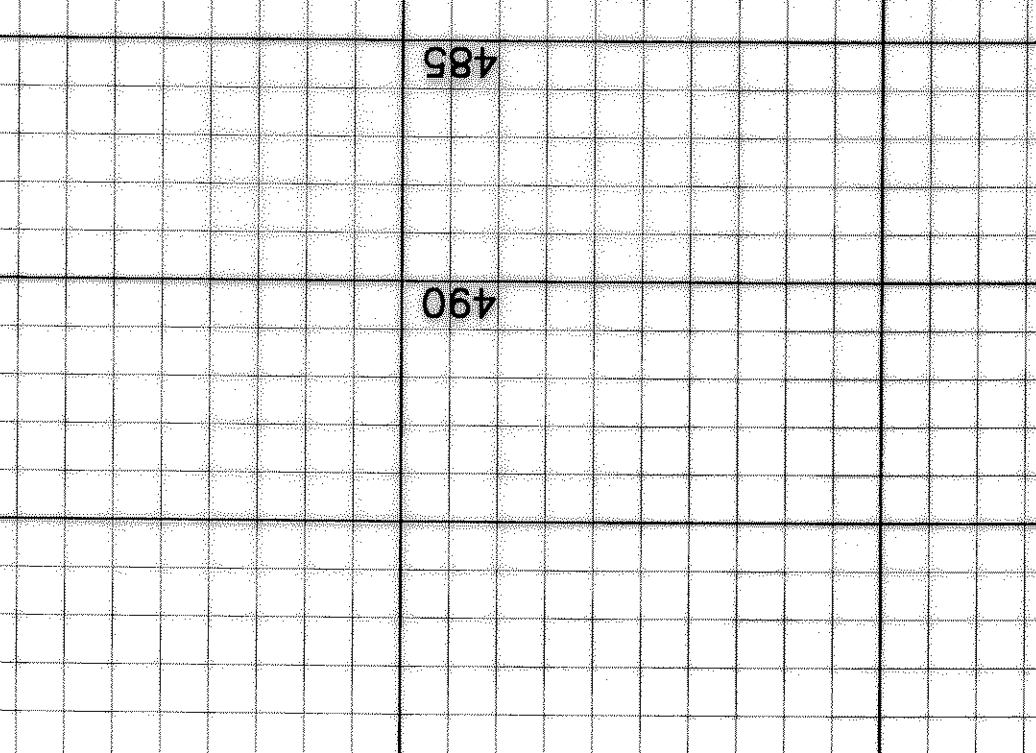


These construction plans were prepared under the responsible supervision of William A. Anderson, Registered Professional Engineer No. 79858



NOTE: THE INTENT OF THE OWNER AND ENGINEER WAS TO CONSTRUCT THE IMPROVEMENTS ACCORDING TO THESE PLANS AS APPROVED BY THE CITY OF ROCKWALL. THE LINE AND GRADES WERE SET ON THE GROUND FOR CONSTRUCTION ACCORDING TO SAID PLANS. WE ARE NOT AWARE OF ANY CHANGES OR REVISIONS TO THESE PLANS DURING CONSTRUCTION EXCEPT AS NOTED ON THE PLANS.

RECORD DRAWINGS March 16, 2004
 NOTE: THE INTENT OF THE OWNER AND ENGINEER WAS TO CONSTRUCT THE IMPROVEMENTS ACCORDING TO THESE PLANS AS APPROVED BY THE CITY OF ROCKWALL. THE LINE AND GRADES WERE SET ON THE GROUND FOR CONSTRUCTION ACCORDING TO SAID PLANS. WE ARE NOT AWARE OF ANY CHANGES OR REVISIONS TO THESE PLANS DURING CONSTRUCTION EXCEPT AS NOTED ON THE PLANS.



1. Street construction shall conform to the "Standard Specifications for Public Works Construction North Central Texas" and the Standard Construction Details as modified by City of Rockwall.
 2. All street pavement shall be Class "5" concrete (minimum 3600 psi).
 3. Sack min. 6.5 sack min. for hand pour and all daily government shall be Class "5" concrete (minimum 4000 psi).
 4. Sack min. 7 sack min. for hand pour per item 7.4.5 P.W.C.N.C.T. Both methods reinforced with #3 or #4 bars shown, both spaced 24" O.C.E.W. hand finishing will be as per item 5.8.2 (h)(2) with 6.5 sack minimum or machine finishing will be as per item 5.8.2 (h)(1) with 6 sack minimum for 3600 psi.
 5. All pavements shall slope a minimum of 1/4" per foot up from the curb to the right-of-way line, then at a 4:1 slope to match existing grade.
 6. Sawing and sealing of all longitudinal and transverse pavement joints shall be considered subsidiary to all paving items.
 7. For classes of concrete pavement, refer to item 7.4.5 of "Standard Specifications for Public Works Construction North Central Texas".
 8. For placing of concrete pavement refer to item 7.6.9 of "Standard Specifications for Public Works Construction North Central Texas".
 9. For maximum slump of concrete for government refer to item 7.4.5 of "Standard Specifications for Public Works Construction North Central Texas".
 10. Contractor responsible for all down curbs at B.F.R.'s (typ.) and Central Texas.
 11. Contractor responsible for the protection of all public utilities during the paving construction.
 12. All fill shall be compacted to 95% standard proctor density in a maximum of 6" lifts or per geotechnical engineers report.

