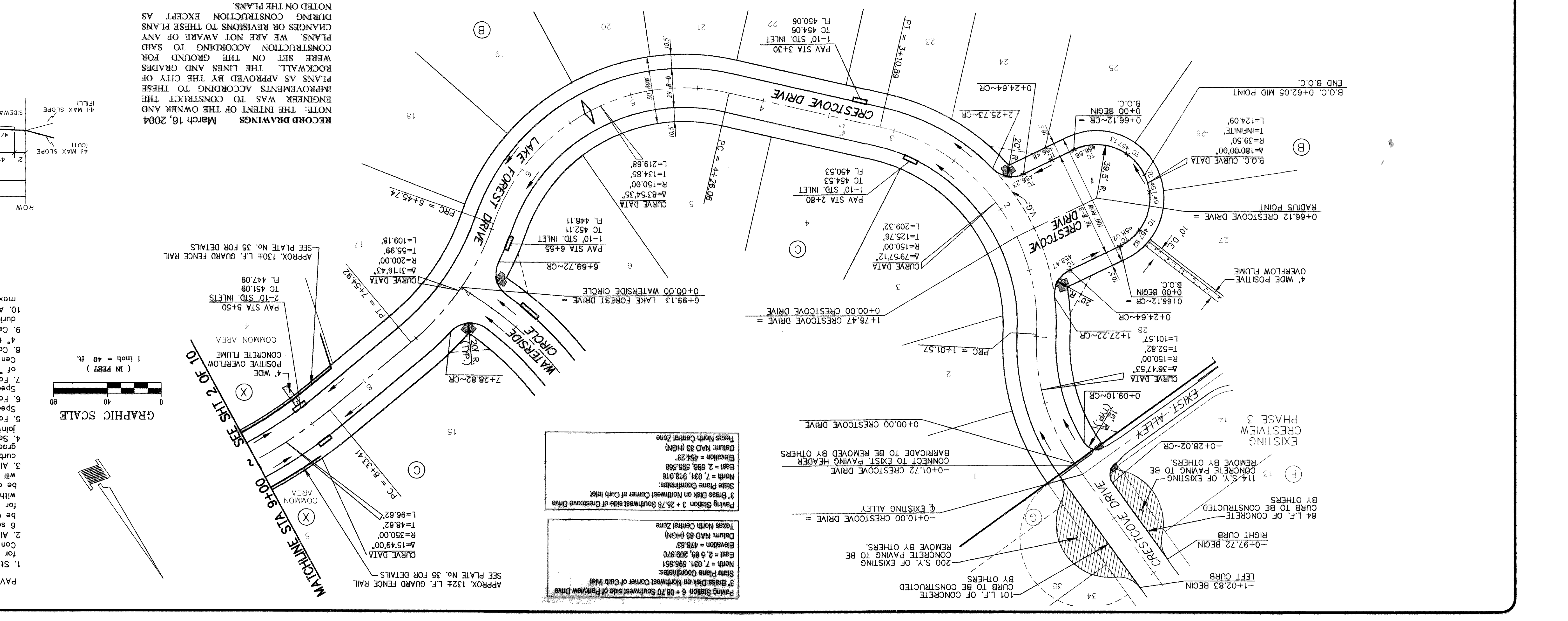
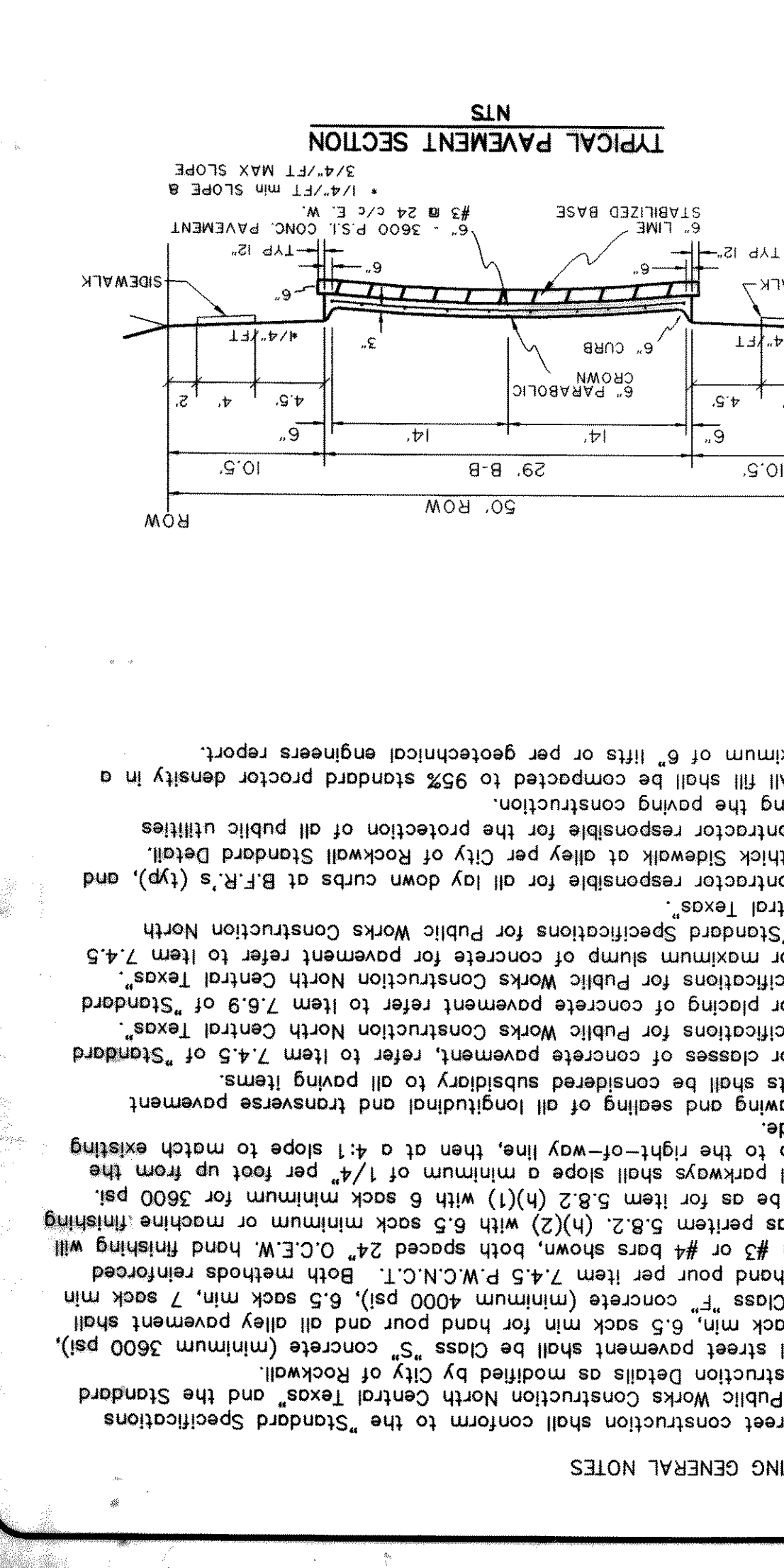
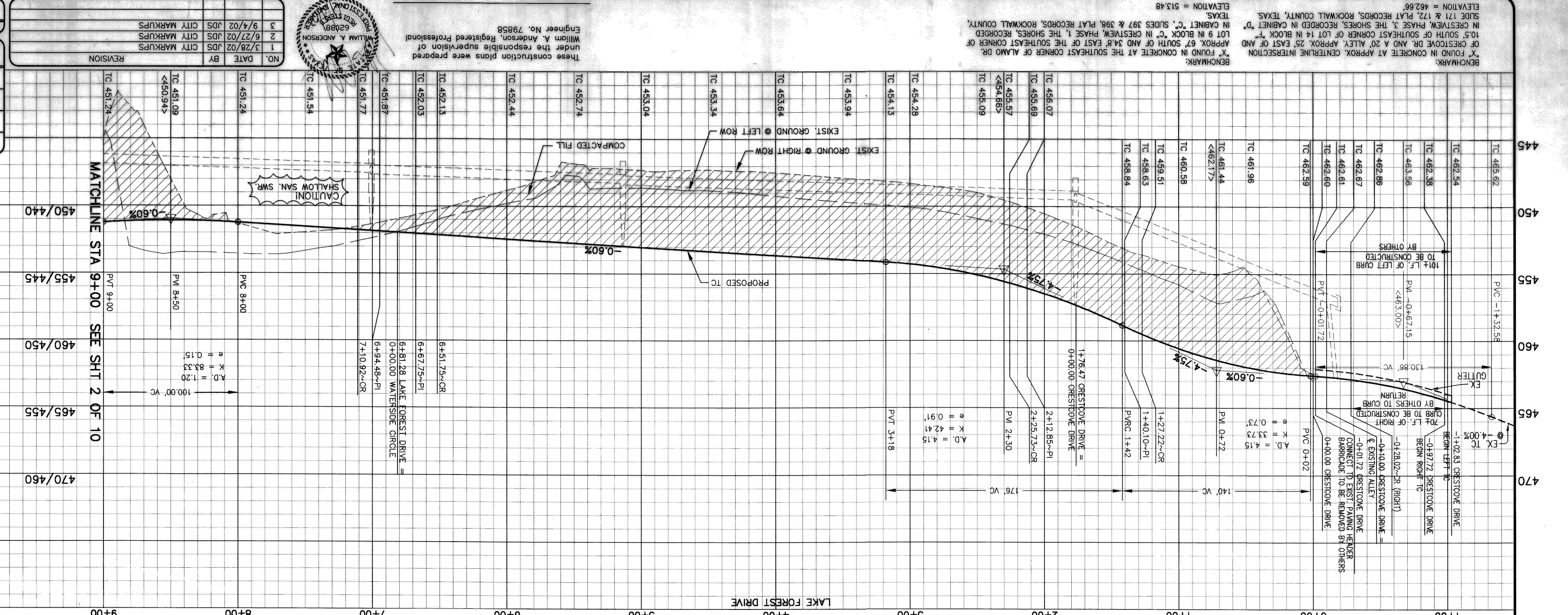
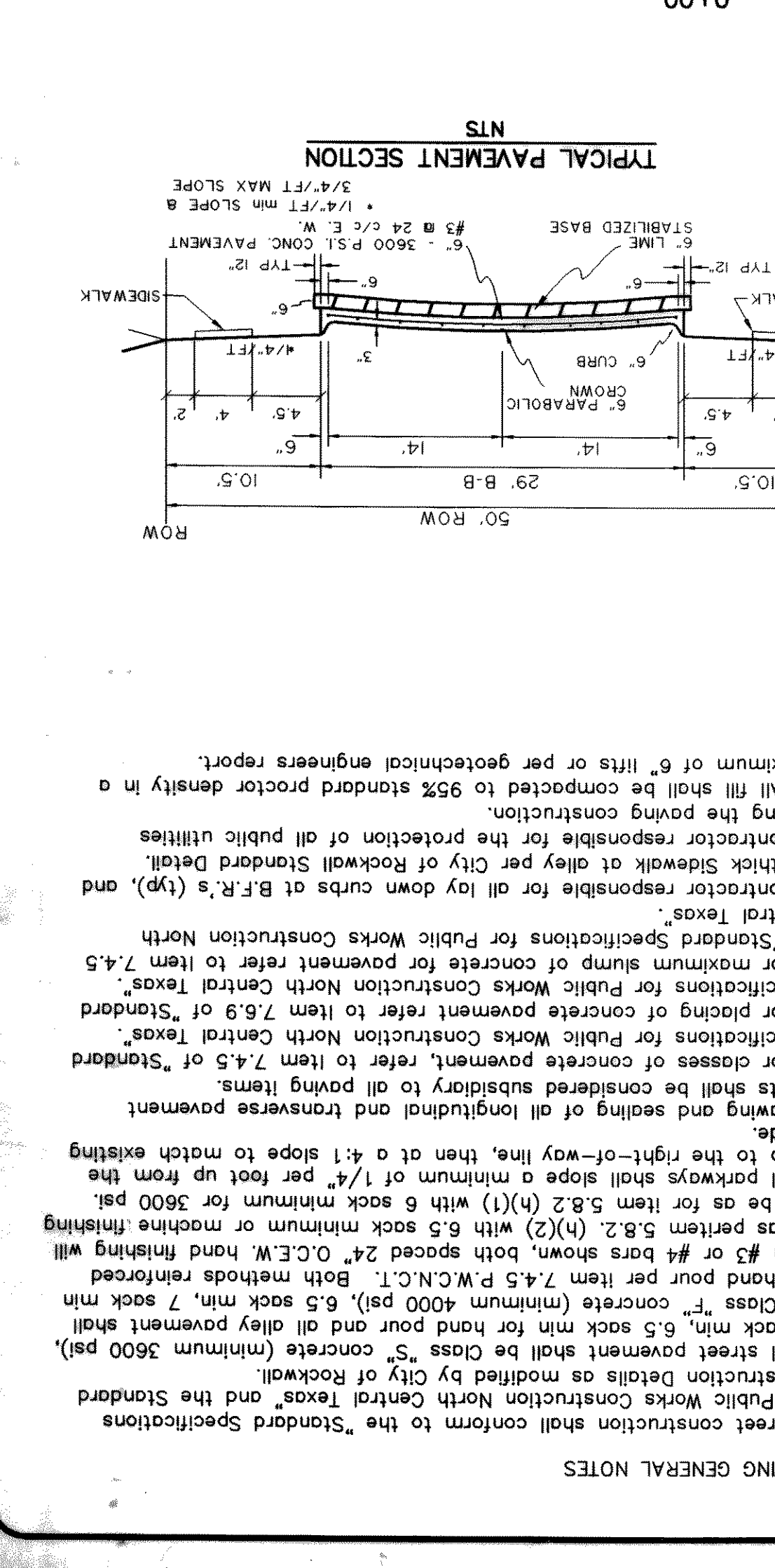


DESIGN	DATE	CHECKED	DATE	SCALE	JOB	SHEET
WMA	SEP 2001			1"=40'	101-042	1
JDS						
JDS						

**DOWDEY, ANDERSON & ASSOCIATES, INC.**  
 5225 VILLAGE CREEK DR., STE. 200 (972) 831-0694 PLANO, TEXAS  
 ROCKWALL COUNTY, TEXAS  
 CITY OF ROCKWALL  
**HILLCREST SHORES PHASE THREE**  
**PAVING PLAN & PROFILE**  
**LAKE FOREST DRIVE & CRESTCOVE DRIVE**

NO.	DATE	BY	REVISION
1	3/28/02	JDS	CITY MARKUPS
2	6/27/02	JDS	CITY MARKUPS
3	9/4/02	JDS	CITY MARKUPS



**PAVING GENERAL NOTES**

- Street construction shall conform to the "Standard Specifications for Public Works Construction North Central Texas" and the Standard Construction Details as modified by City of Rockwall.
- All street pavement shall be Class "S" concrete (minimum 5600 psi).
- 6 sack min. 6.5 sack min. for hand pour and all alley pavement shall be Class "F" concrete (minimum 4000 psi).
- Both methods reinforced with #3 or #4 bars shown, both spaced 24" O.C.E.W. hand finishing will be as per item 5.B.2. (h)(2) with 6.5 sack minimum or machine finishing will be as per item 5.B.2. (h)(1) with 6 sack minimum or 1 1/4" per foot up from the curb to the right-way line, then at a 4:1 slope to match existing grade.
- Sawing and sealing of all longitudinal and transverse government joints shall be considered subsidiary to all paving items.
- For classes of concrete pavement, refer to item 7.4.5 of "Standard Specifications for Public Works Construction North Central Texas".
- For placing of concrete pavement refer to item 7.6.9 of "Standard Specifications for Public Works Construction North Central Texas".
- For maximum slump of concrete for government refer to item 7.4.5 of "Standard Specifications for Public Works Construction North Central Texas".
- Contractor responsible for all lay down curbs at B.F.R.'s (yp), and 4" thick sidewalk at alley per City of Rockwall Standard Detail.
- Contractor responsible for the protection of all public utilities during the paving construction.
- All fill shall be compacted to 95% standard proctor density in a maximum of 6" lifts or per geotechnical engineers report.



**RECORD DRAWINGS** March 16, 2004  
 NOTE: THE INTENT OF THE OWNER AND ENGINEER WAS TO CONSTRUCT THE IMPROVEMENTS ACCORDING TO THESE PLANS AS APPROVED BY THE CITY OF ROCKWALL. THE LINES AND GRADES WERE SET ON THE GROUND FOR CONSTRUCTION ACCORDING TO SAID PLANS. WE ARE NOT AWARE OF ANY CHANGES OR REVISIONS TO THESE PLANS DURING CONSTRUCTION EXCEPT AS NOTED ON THE PLANS.

**PAVING STA 6+08.70 Southwest side of Parkway Drive**  
 State Plane Coordinates:  
 North = 7,031,595.551  
 East = 2,599,209.870  
 Elevation = 476.83'  
 Datum: NAD 83 (HGN)  
 Texas North Central Zone

**PAVING STA 3+25.78 Southwest side of Crestcove Drive**  
 State Plane Coordinates:  
 North = 7,031,595.508  
 East = 2,598,595.508  
 Elevation = 484.23'  
 Datum: NAD 83 (HGN)  
 Texas North Central Zone

**APPROX. 1324' L.F. GUARD FENCE RAIL**  
 SEE PLATE NO. 35 FOR DETAILS.  
 CURVE DATA:  
 Δ=154.900'  
 R=350.00'  
 T=48.62'  
 L=96.62'

**APPROX. 1324' L.F. GUARD FENCE RAIL**  
 SEE PLATE NO. 35 FOR DETAILS.  
 CURVE DATA:  
 Δ=316.43'  
 R=200.00'  
 T=55.99'  
 L=109.18'

**APPROX. 1304' L.F. GUARD FENCE RAIL**  
 SEE PLATE NO. 35 FOR DETAILS.  
 CURVE DATA:  
 Δ=316.43'  
 R=200.00'  
 T=55.99'  
 L=109.18'

**APPROX. 1304' L.F. GUARD FENCE RAIL**  
 SEE PLATE NO. 35 FOR DETAILS.  
 CURVE DATA:  
 Δ=316.43'  
 R=200.00'  
 T=55.99'  
 L=109.18'

**APPROX. 1304' L.F. GUARD FENCE RAIL**  
 SEE PLATE NO. 35 FOR DETAILS.  
 CURVE DATA:  
 Δ=316.43'  
 R=200.00'  
 T=55.99'  
 L=109.18'

**APPROX. 1304' L.F. GUARD FENCE RAIL**  
 SEE PLATE NO. 35 FOR DETAILS.  
 CURVE DATA:  
 Δ=316.43'  
 R=200.00'  
 T=55.99'  
 L=109.18'

**APPROX. 1304' L.F. GUARD FENCE RAIL**  
 SEE PLATE NO. 35 FOR DETAILS.  
 CURVE DATA:  
 Δ=316.43'  
 R=200.00'  
 T=55.99'  
 L=109.18'

**APPROX. 1304' L.F. GUARD FENCE RAIL**  
 SEE PLATE NO. 35 FOR DETAILS.  
 CURVE DATA:  
 Δ=316.43'  
 R=200.00'  
 T=55.99'  
 L=109.18'

**APPROX. 1304' L.F. GUARD FENCE RAIL**  
 SEE PLATE NO. 35 FOR DETAILS.  
 CURVE DATA:  
 Δ=316.43'  
 R=200.00'  
 T=55.99'  
 L=109.18'

**APPROX. 1304' L.F. GUARD FENCE RAIL**  
 SEE PLATE NO. 35 FOR DETAILS.  
 CURVE DATA:  
 Δ=316.43'  
 R=200.00'  
 T=55.99'  
 L=109.18'

**APPROX. 1304' L.F. GUARD FENCE RAIL**  
 SEE PLATE NO. 35 FOR DETAILS.  
 CURVE DATA:  
 Δ=316.43'  
 R=200.00'  
 T=55.99'  
 L=109.18'

**APPROX. 1304' L.F. GUARD FENCE RAIL**  
 SEE PLATE NO. 35 FOR DETAILS.  
 CURVE DATA:  
 Δ=316.43'  
 R=200.00'  
 T=55.99'  
 L=109.18'

**APPROX. 1304' L.F. GUARD FENCE RAIL**  
 SEE PLATE NO. 35 FOR DETAILS.  
 CURVE DATA:  
 Δ=316.43'  
 R=200.00'  
 T=55.99'  
 L=109.18'

**APPROX. 1304' L.F. GUARD FENCE RAIL**  
 SEE PLATE NO. 35 FOR DETAILS.  
 CURVE DATA:  
 Δ=316.43'  
 R=200.00'  
 T=55.99'  
 L=109.18'

**APPROX. 1304' L.F. GUARD FENCE RAIL**  
 SEE PLATE NO. 35 FOR DETAILS.  
 CURVE DATA:  
 Δ=316.43'  
 R=200.00'  
 T=55.99'  
 L=109.18'

**APPROX. 1304' L.F. GUARD FENCE RAIL**  
 SEE PLATE NO. 35 FOR DETAILS.  
 CURVE DATA:  
 Δ=316.43'  
 R=200.00'  
 T=55.99'  
 L=109.18'

**APPROX. 1304' L.F. GUARD FENCE RAIL**  
 SEE PLATE NO. 35 FOR DETAILS.  
 CURVE DATA:  
 Δ=316.43'  
 R=200.00'  
 T=55.99'  
 L=109.18'

**APPROX. 1304' L.F. GUARD FENCE RAIL**  
 SEE PLATE NO. 35 FOR DETAILS.  
 CURVE DATA:  
 Δ=316.43'  
 R=200.00'  
 T=55.99'  
 L=109.18'

**APPROX. 1304' L.F. GUARD FENCE RAIL**  
 SEE PLATE NO. 35 FOR DETAILS.  
 CURVE DATA:  
 Δ=316.43'  
 R=200.00'  
 T=55.99'  
 L=109.18'

**APPROX. 1304' L.F. GUARD FENCE RAIL**  
 SEE PLATE NO. 35 FOR DETAILS.  
 CURVE DATA:  
 Δ=316.43'  
 R=200.00'  
 T=55.99'  
 L=109.18'

**APPROX. 1304' L.F. GUARD FENCE RAIL**  
 SEE PLATE NO. 35 FOR DETAILS.  
 CURVE DATA:  
 Δ=316.43'  
 R=200.00'  
 T=55.99'  
 L=109.18'

**APPROX. 1304' L.F. GUARD FENCE RAIL**  
 SEE PLATE NO. 35 FOR DETAILS.  
 CURVE DATA:  
 Δ=316.43'  
 R=200.00'  
 T=55.99'  
 L=109.18'

**APPROX. 1304' L.F. GUARD FENCE RAIL**  
 SEE PLATE NO. 35 FOR DETAILS.  
 CURVE DATA:  
 Δ=316.43'  
 R=200.00'  
 T=55.99'  
 L=109.18'

**APPROX. 1304' L.F. GUARD FENCE RAIL**  
 SEE PLATE NO. 35 FOR DETAILS.  
 CURVE DATA:  
 Δ=316.43'  
 R=200.00'  
 T=55.99'  
 L=109.18'

**APPROX. 1304' L.F. GUARD FENCE RAIL**  
 SEE PLATE NO. 35 FOR DETAILS.  
 CURVE DATA:  
 Δ=316.43'  
 R=200.00'  
 T=55.99'  
 L=109.18'

**APPROX. 1304' L.F. GUARD FENCE RAIL**  
 SEE PLATE NO. 35 FOR DETAILS.  
 CURVE DATA:  
 Δ=316.43'  
 R=200.00'  
 T=55.99'  
 L=109.18'

**APPROX. 1304' L.F. GUARD FENCE RAIL**  
 SEE PLATE NO. 35 FOR DETAILS.  
 CURVE DATA:  
 Δ=316.43'  
 R=200.00'  
 T=55.99'  
 L=109.18'

**APPROX. 1304' L.F. GUARD FENCE RAIL**  
 SEE PLATE NO. 35 FOR DETAILS.  
 CURVE DATA:  
 Δ=316.43'  
 R=200.00'  
 T=55.99'  
 L=109.18'

**APPROX. 1304' L.F. GUARD FENCE RAIL**  
 SEE PLATE NO. 35 FOR DETAILS.  
 CURVE DATA:  
 Δ=316.43'  
 R=200.00'  
 T=55.99'  
 L=109.18'

**APPROX. 1304' L.F. GUARD FENCE RAIL**  
 SEE PLATE NO. 35 FOR DETAILS.  
 CURVE DATA:  
 Δ=316.43'  
 R=200.00'  
 T=55.99'  
 L=109.18'

**APPROX. 1304' L.F. GUARD FENCE RAIL**  
 SEE PLATE NO. 35 FOR DETAILS.  
 CURVE DATA:  
 Δ=316.43'  
 R=200.00'  
 T=55.99'  
 L=109.18'

**APPROX. 1304' L.F. GUARD FENCE RAIL**  
 SEE PLATE NO. 35 FOR DETAILS.  
 CURVE DATA:  
 Δ=316.43'  
 R=200.00'  
 T=55.99'  
 L=109.18'

**APPROX. 1304' L.F. GUARD FENCE RAIL**  
 SEE PLATE NO. 35 FOR DETAILS.  
 CURVE DATA:  
 Δ=316.43'  
 R=200.00'  
 T=55.99'  
 L=109.18'

**APPROX. 1304' L.F. GUARD FENCE RAIL**  
 SEE PLATE NO. 35 FOR DETAILS.  
 CURVE DATA:  
 Δ=316.43'  
 R=200.00'  
 T=55.99'  
 L=109.18'

**APPROX. 1304' L.F. GUARD FENCE RAIL**  
 SEE PLATE NO. 35 FOR DETAILS.  
 CURVE DATA:  
 Δ=316.43'  
 R=200.00'  
 T=55.99'  
 L=109.18'

**APPROX. 1304' L.F. GUARD FENCE RAIL**  
 SEE PLATE NO. 35 FOR DETAILS.  
 CURVE DATA:  
 Δ=316.43'  
 R=200.00'  
 T=55.99'  
 L=109.18'

**APPROX. 1304' L.F. GUARD FENCE RAIL**  
 SEE PLATE NO. 35 FOR DETAILS.  
 CURVE DATA:  
 Δ=316.43'  
 R=200.00'  
 T=55.99'  
 L=109.18'

**APPROX. 1304' L.F. GUARD FENCE RAIL**  
 SEE PLATE NO. 35 FOR DETAILS.  
 CURVE DATA:  
 Δ=316.43'  
 R=200.00'  
 T=55.99'  
 L=109.18'

**APPROX. 1304' L.F. GUARD FENCE RAIL**  
 SEE PLATE NO. 35 FOR DETAILS.  
 CURVE DATA:  
 Δ=316.43'  
 R=200.00'  
 T=55.99'  
 L=109.18'

**APPROX. 1304' L.F. GUARD FENCE RAIL**  
 SEE PLATE NO. 35 FOR DETAILS.  
 CURVE DATA:  
 Δ=316.43'  
 R=200.00'  
 T=55.99'  
 L=109.18'

**APPROX. 1304' L.F. GUARD FENCE RAIL**  
 SEE PLATE NO. 35 FOR DETAILS.  
 CURVE DATA:  
 Δ=316.43'  
 R=200.00'  
 T=55.99'  
 L=109.18'

**APPROX. 1304' L.F. GUARD FENCE RAIL**  
 SEE PLATE NO. 35 FOR DETAILS.  
 CURVE DATA:  
 Δ=316.43'  
 R=200.00'  
 T=55.99'  
 L=109.18'

**APPROX. 1304' L.F. GUARD FENCE RAIL**  
 SEE PLATE NO. 35 FOR DETAILS.  
 CURVE DATA:  
 Δ=316.43'  
 R=200.00'  
 T=55.99'  
 L=109.18'

**APPROX. 1304' L.F. GUARD FENCE RAIL**  
 SEE PLATE NO. 35 FOR DETAILS.  
 CURVE DATA:  
 Δ=316.43'  
 R=200.00'  
 T=55.99'  
 L=109.18'

**APPROX. 1304' L.F. GUARD FENCE RAIL**  
 SEE PLATE NO. 35 FOR DETAILS.  
 CURVE DATA:  
 Δ=316.43'  
 R=200.00'  
 T=55.99'  
 L=109.18'

**APPROX. 1304' L.F. GUARD FENCE RAIL**  
 SEE PLATE NO. 35 FOR DETAILS.  
 CURVE DATA:  
 Δ=316.43'  
 R=200.00'  
 T=55.99'  
 L=109.18'

**APPROX. 1304' L.F. GUARD FENCE RAIL**  
 SEE PLATE NO. 35 FOR DETAILS.  
 CURVE DATA:  
 Δ=316.43'  
 R=200.00'  
 T=55.99'  
 L=109.18'

**APPROX. 1304' L.F. GUARD FENCE RAIL**  
 SEE PLATE NO. 35 FOR DETAILS.  
 CURVE DATA:  
 Δ=316.43'  
 R=200.00'  
 T=55.99'  
 L=109.18'

**APPROX. 1304' L.F. GUARD FENCE RAIL**  
 SEE PLATE NO. 35 FOR DETAILS.  
 CURVE DATA:  
 Δ=316.43'  
 R=200.00'  
 T=55.99'  
 L=109.18'

**APPROX. 1304' L.F. GUARD FENCE RAIL**  
 SEE PLATE NO. 35 FOR DETAILS.  
 CURVE DATA:  
 Δ=316.43'  
 R=200.00'  
 T=55.99'  
 L=109.18'

**APPROX. 1304' L.F. GUARD FENCE RAIL**  
 SEE PLATE NO. 35 FOR DETAILS.  
 CURVE DATA:  
 Δ=316.43'  
 R=200.00'  
 T=55.99'  
 L=109.18'

**APPROX. 1304' L.F. GUARD FENCE RAIL**  
 SEE PLATE NO. 35 FOR DETAILS.  
 CURVE DATA:  
 Δ=316.43'  
 R=200.00'  
 T=55.99'  
 L=109.18'

**APPROX. 1304' L.F. GUARD FENCE RAIL**  
 SEE PLATE NO. 35 FOR DETAILS.  
 CURVE DATA:  
 Δ=316.43'  
 R=200.00'  
 T=55.99'  
 L=109.18'

**APPROX. 1304' L.F. GUARD FENCE RAIL**  
 SEE PLATE NO. 35 FOR DETAILS.  
 CURVE DATA:  
 Δ=316.43'  
 R=200.00'  
 T=55.99'  
 L=109.18'

**APPROX. 1304' L.F. GUARD FENCE RAIL**  
 SEE PLATE NO. 35 FOR DETAILS.  
 CURVE DATA:  
 Δ=316.43'  
 R=200.00'  
 T=55.99'  
 L=109.18'

**APPROX. 1304' L.F. GUARD FENCE RAIL**  
 SEE PLATE NO. 35 FOR DETAILS.  
 CURVE DATA:  
 Δ=316.43'  
 R=200.00'  
 T=55.99'  
 L=109.18'

**APPROX. 1304' L.F. GUARD FENCE RAIL**  
 SEE PLATE NO. 35 FOR DETAILS.  
 CURVE DATA:  
 Δ=316.43'  
 R=200.00'  
 T=55.99'  
 L=109.18'

**APPROX. 1304' L.F. GUARD FENCE RAIL**  
 SEE PLATE NO. 35 FOR DETAILS.  
 CURVE DATA:  
 Δ=316.43'  
 R=200.00'  
 T=55.99'  
 L=109.18'

**APPROX. 1304' L.F. GUARD FENCE RAIL**  
 SEE PLATE NO. 35 FOR DETAILS.  
 CURVE DATA:  
 Δ=316.43'  
 R=200.00'  
 T=55.99'  
 L=109.18'

**APPROX. 1304' L.F. GUARD FENCE RAIL**  
 SEE PLATE NO. 35 FOR DETAILS.  
 CURVE DATA:  
 Δ=316.43'  
 R=200.00'  
 T=55.99'  
 L=109.18'

**APPROX. 1304' L.F. GUARD FENCE RAIL**  
 SEE PLATE NO. 35 FOR DETAILS.  
 CURVE DATA:  
 Δ=316.43'  
 R=200.00'  
 T=55.99'  
 L=109.18'

**APPROX. 1304' L.F. GUARD FENCE RAIL**  
 SEE PLATE NO. 35 FOR DETAILS.  
 CURVE DATA:  
 Δ=316.43'  
 R=200.00'  
 T=55.99'  
 L=109.18'

**APPROX. 1304' L.F. GUARD FENCE RAIL**  
 SEE PLATE NO. 35 FOR DETAILS.  
 CURVE DATA:  
 Δ=316.43'  
 R=200.00'  
 T=55.99'  
 L=109.18'

**APPROX. 1304' L.F. GUARD FENCE RAIL**  
 SEE PLATE NO. 35 FOR DETAILS.  
 CURVE DATA:  
 Δ=316.43'  
 R=200.00'  
 T=55.99'  
 L=109.18'

**APPROX. 1304' L.F. GUARD FENCE RAIL**  
 SEE PLATE NO. 35 FOR DETAILS.  
 CURVE DATA:  
 Δ=316.43'  
 R=200.00'  
 T=55.99'  
 L=109.18'

**APPROX. 1304' L.F. GUARD FENCE RAIL**  
 SEE PLATE NO. 35 FOR DETAILS.  
 CURVE DATA:  
 Δ=316.43'  
 R=200.00'  
 T=55.99'  
 L=109.18'

**APPROX. 1304' L.F. GUARD FENCE RAIL**  
 SEE PLATE NO. 35 FOR DETAILS.  
 CURVE DATA:  
 Δ=316.43'  
 R=200.00'  
 T=55.99'  
 L=109.18'

**APPROX. 1304' L.F. GUARD FENCE RAIL**  
 SEE PLATE NO. 35 FOR DETAILS.  
 CURVE DATA:  
 Δ=316.43'  
 R=200.00'  
 T=55.99'  
 L=109.18'

**APPROX. 1304' L.F. GUARD FENCE RAIL**  
 SEE PLATE NO. 35 FOR DETAILS.  
 CURVE DATA:  
 Δ=316.43'  
 R=200.00'  
 T=55.99'  
 L=109.18'

**APPROX. 1304' L.F. GUARD FENCE RAIL**  
 SEE PLATE NO. 35 FOR DETAILS.  
 CURVE DATA:  
 Δ=316.43'  
 R=200.00'  
 T=55.99'  
 L=109.18'

**APPROX. 1304' L.F. GUARD FENCE RAIL**  
 SEE PLATE NO. 35 FOR DETAILS.  
 CURVE DATA:  
 Δ=316.43'  
 R=200.00'  
 T=55.99'  
 L=109.18'

**APPROX. 1304' L.F. GUARD FENCE RAIL**  
 SEE PLATE NO. 35 FOR DETAILS.  
 CURVE DATA:  
 Δ=316.43'  
 R=200.00'  
 T=55.99'  
 L=109.18'

**APPROX. 1304' L.F. GUARD FENCE RAIL**  
 SEE PLATE NO. 35 FOR DETAILS.  
 CURVE DATA:  
 Δ=316.43'  
 R=200.00'  
 T=55.99'  
 L=109.18'

**APPROX. 1304' L.F. GUARD FENCE RAIL**  
 SEE PLATE NO. 35 FOR DETAILS.  
 CURVE DATA:  
 Δ=316.43'  
 R=200.00'  
 T=55.99'  
 L=109.18'

**APPROX. 1304' L.F. GUARD FENCE RAIL**  
 SEE PLATE NO. 35 FOR DETAILS.  
 CURVE DATA:  
 Δ=316.43'  
 R=200.00'  
 T=55.99'  
 L=109.18'

**APPROX. 1304' L.F. GUARD FENCE RAIL**  
 SEE PLATE NO. 35 FOR DETAILS.  
 CURVE DATA:  
 Δ=316.43'  
 R=200.00'  
 T=55.99'  
 L=109.18'

**APPROX. 1304' L.F. GUARD FENCE RAIL**  
 SEE PLATE NO. 35 FOR DETAILS.  
 CURVE DATA:  
 Δ=316.43'  
 R=200.00'  
 T=55.99'  
 L=109.18'

**APPROX. 1304' L.F. GUARD FENCE RAIL**  
 SEE PLATE NO. 35 FOR DETAILS.  
 CURVE DATA: