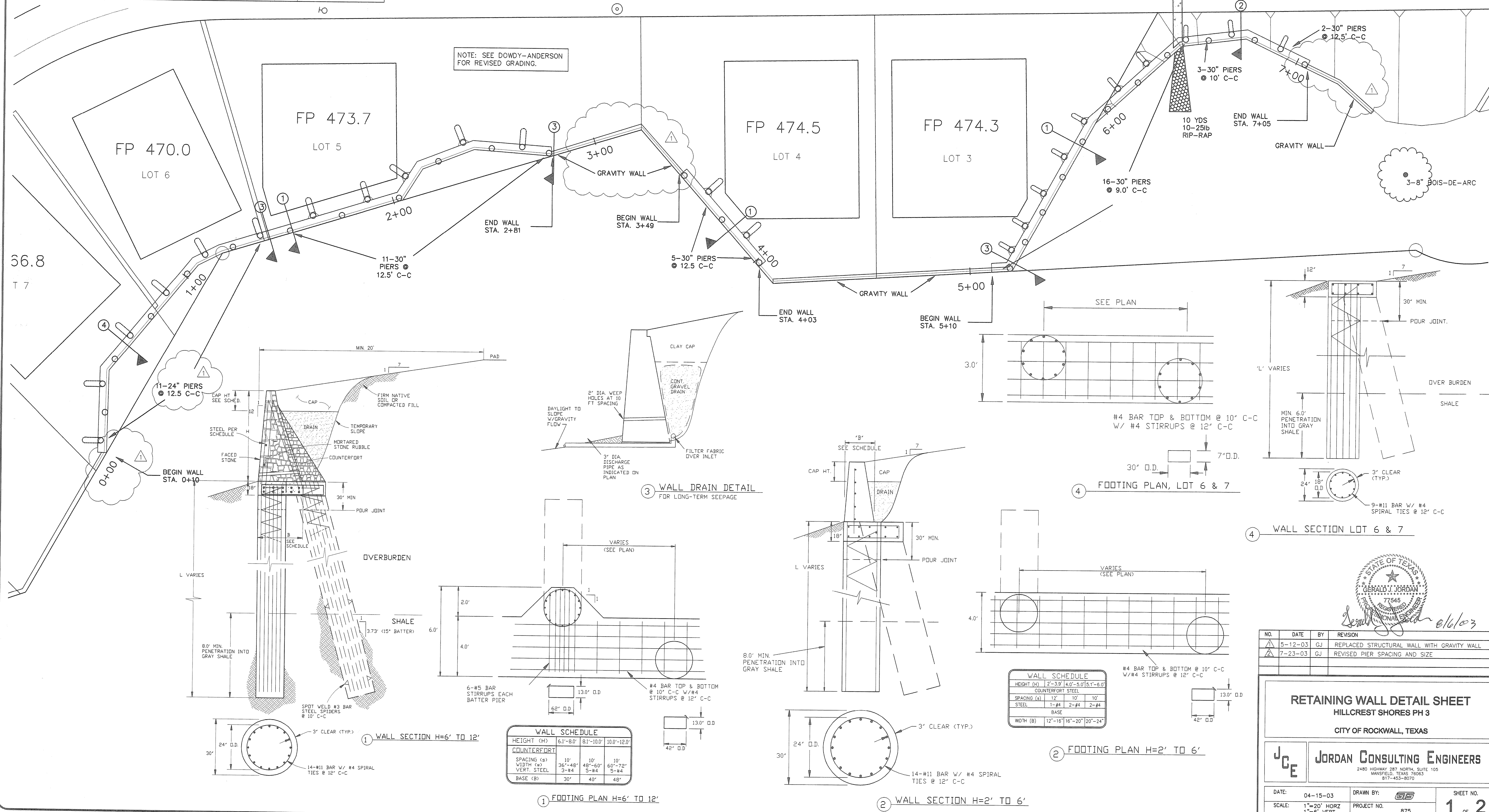
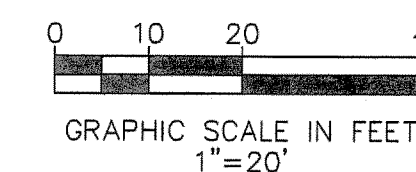


PIER TAKE-OFFS  
(FOR ESTIMATING PURPOSES ONLY)

NO. PIERS	PIER DIA. (IN.)	AVG. LENGTH (FT.)	TOTAL L.F.
37	30	22	814
11	24	20	220
48			1034 L.F.



STATE OF TEXAS  
GENERAL ENGINEER  
77545  
JORDAN CONSULTING ENGINEERS  
6/16/03

NO.	DATE	BY	REVISION
5-12-03	GJ		REPLACED STRUCTURAL WALL WITH GRAVITY WALL
7-23-03	GJ		REVISED PIER SPACING AND SIZE

**RETAINING WALL DETAIL SHEET**  
HILLCREST SHORES PH 3  
CITY OF ROCKWALL, TEXAS

JCE JORDAN CONSULTING ENGINEERS  
2480 HIGHWAY 287 NORTH, SUITE 105  
MANSFIELD, TEXAS 76063  
817-453-8070

DATE: 04-15-03 DRAWN BY: SHEET NO. 1 OF 2  
SCALE: 1"=20' HORZ 1"=6' VERT PROJECT NO. 875