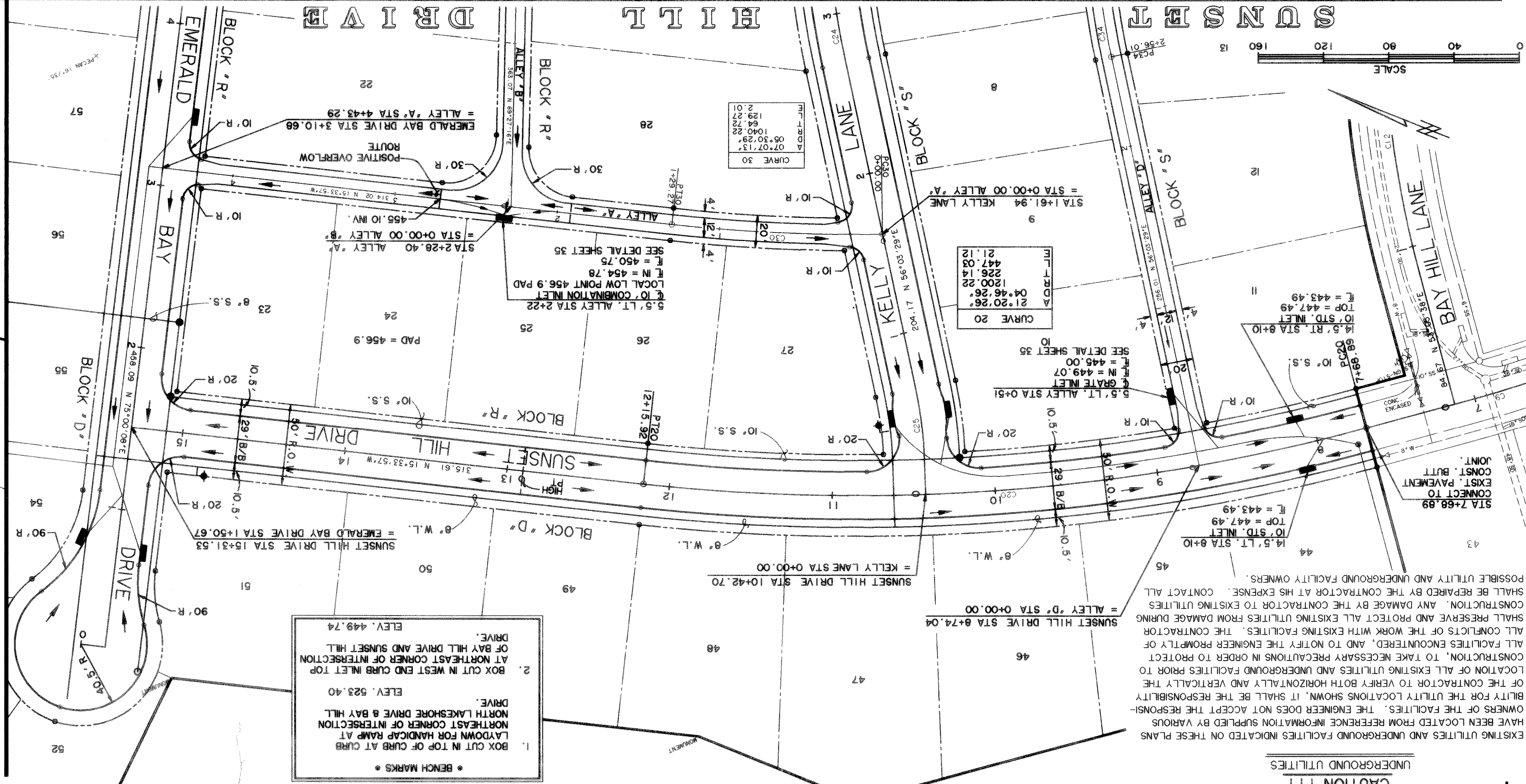


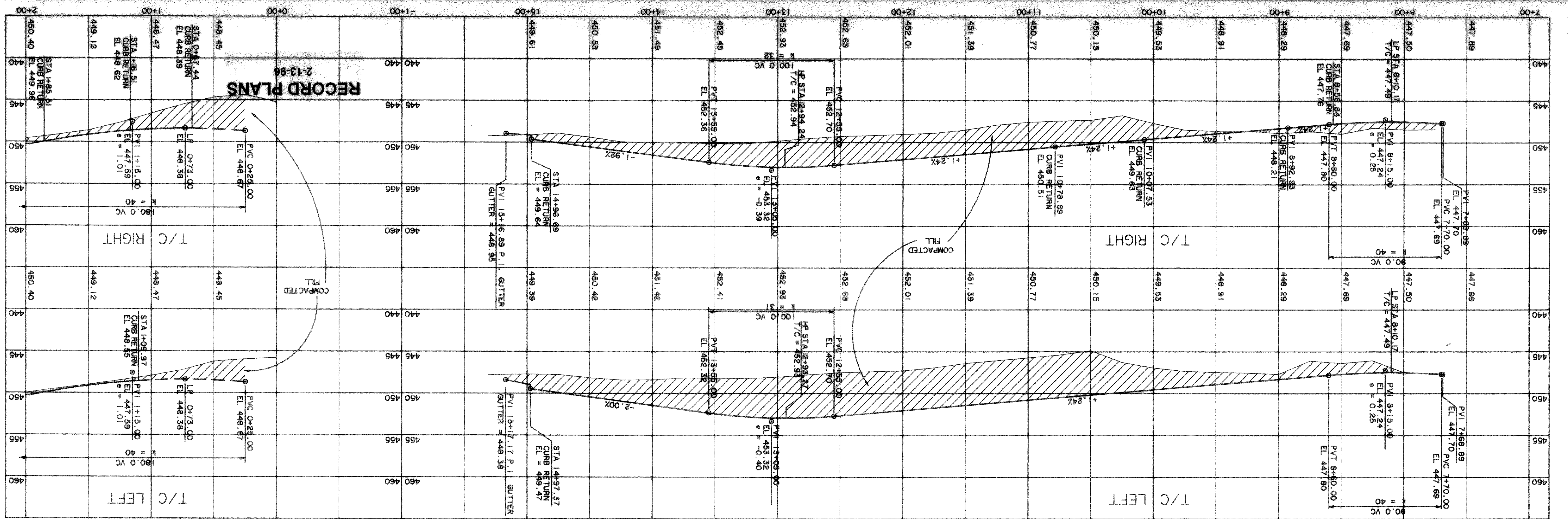
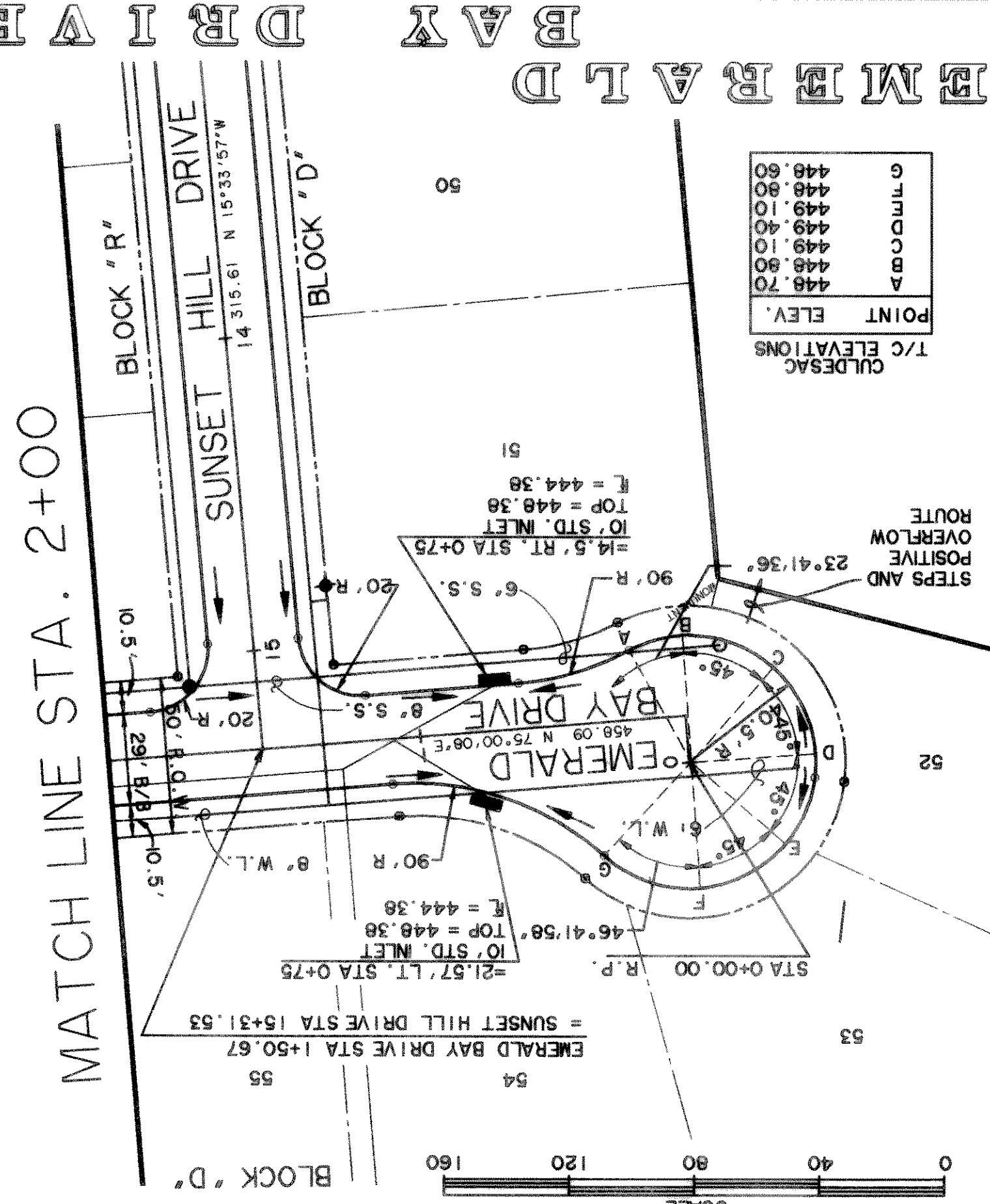
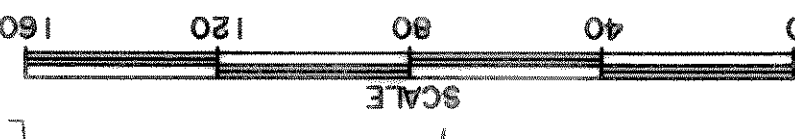
CAUTION !!!
UNDERGROUND UTILITIES

EXISTING UTILITIES AND UNDERGROUND FACILITIES INDICATED ON THESE PLANS HAVE BEEN LOCATED FROM REFERENCE INFORMATION SUPPLIED BY VARIOUS OWNERS OF THE FACILITIES. THE ENGINEER DOES NOT ACCEPT THE RESPONSIBILITY FOR THE UTILITY LOCATIONS SHOWN, IT SHALL BE THE RESPONSIBILITY OF THE CONTRACTOR TO VERIFY BOTH HORIZONTALLY AND VERTICALLY THE LOCATION OF ALL EXISTING UTILITIES AND UNDERGROUND FACILITIES PRIOR TO CONSTRUCTION. TO TAKE NECESSARY PRECAUTIONS IN ORDER TO PROTECT ALL FACILITIES ENCOUNTERED, AND TO NOTIFY THE ENGINEER PROMPTLY OF ALL CONFLICTS OF THE WORK WITH EXISTING FACILITIES. THE CONTRACTOR SHALL PRESERVE AND PROTECT ALL EXISTING UTILITIES FROM DAMAGE DURING CONSTRUCTION. ANY DAMAGE BY THE CONTRACTOR TO EXISTING UTILITIES SHALL BE REPAIRED BY THE CONTRACTOR AT HIS EXPENSE. CONTACT ALL POSSIBLE UTILITY AND UNDERGROUND FACILITY OWNERS.



- * BENCH MARKS *
- 1. BOX CUT IN TOP OF CURB AT CURB LAYDOWN FOR HANDICAP RAMP AT NORTHEAST CORNER OF INTERSECTION NORTH LAKESHORE DRIVE & BAY HILL DRIVE. ELEV. 523.40
- 2. BOX CUT IN WEST END CURB INLET TOP AT NORTHEAST CORNER OF INTERSECTION OF BAY HILL DRIVE AND SUNSET HILL DRIVE. ELEV. 449.74

POINT	ELEV.
G	448.80
H	448.80
I	448.80
J	448.80
K	448.80
L	448.80
M	448.80
N	448.80
O	448.80
P	448.80
Q	448.80
R	448.80
S	448.80
T	448.80
U	448.80
V	448.80
W	448.80
X	448.80
Y	448.80
Z	448.80



PLAN AND PROFILE
SUNSET HILL DRIVE
STA 7+00 TO STA 15+31.53
EMERALD BAY DRIVE
STA 0+00 TO STA 2+00

HILLCREST SHORES
PHASE II
CITY OF ROCKWALL,
ROCKWALL COUNTY, TEXAS

PREPARED BY:
WIA WIER & ASSOCIATES, INC.
ENGINEERS SURVEYORS LAND PLANNERS
4300 BELTWAY PLACE SUITE 130 ARLINGTON, TEXAS 76010 (817)461-7700
3808 SOUTH FREEMAN FORT WORTH, TEXAS 76110 (817)266-0212

SHEET NO. 3
DATE: 12/15/95
LAST SHEET OF 3
W.A. WIER & ASSOCIATES, INC.
REGISTERED PROFESSIONAL ENGINEERS
STATE OF TEXAS
NO. 40964