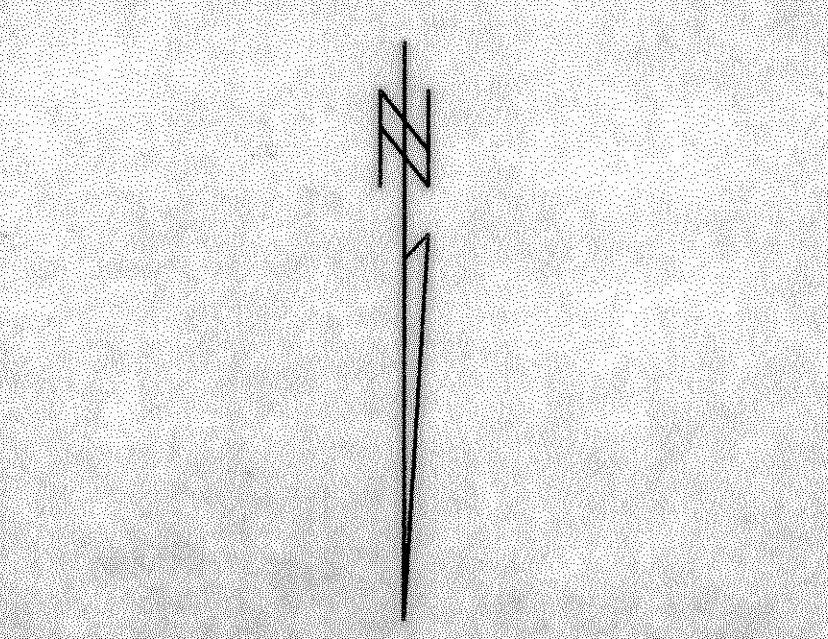
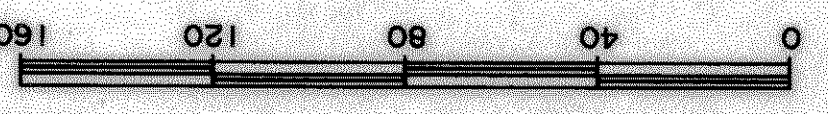
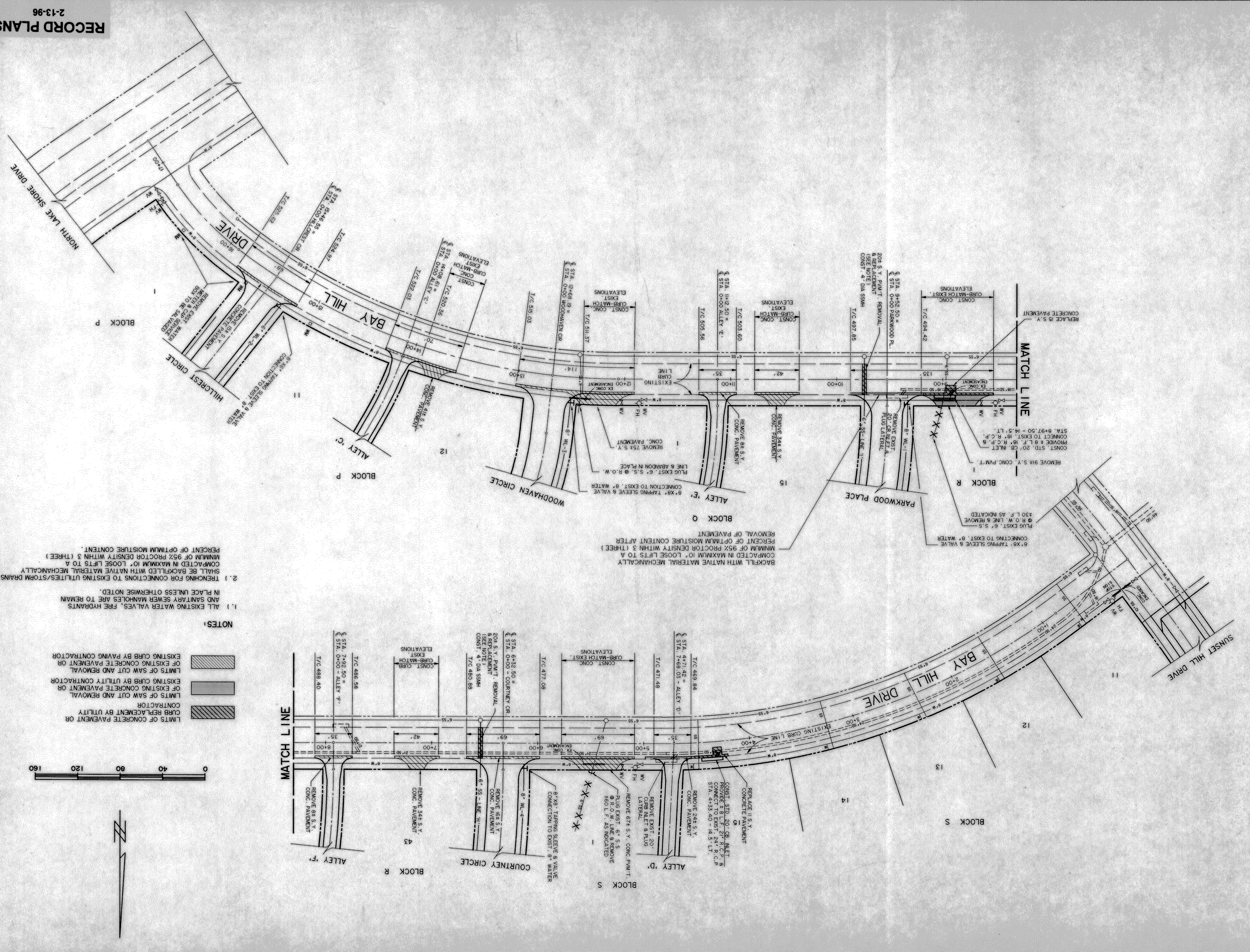


BAY HILL DRIVE
MODIFICATIONS PLAN

HILLCREST SHORES
PHASE II
 CITY OF ROCKWALL,
 ROCKWALL COUNTY, TEXAS

PREPARED BY:
WIA WIER & ASSOCIATES, INC.
 ENGINEERS SURVEYORS LAND PLANNERS
 430 BELMONT PLACE SUITE 130 ARLINGTON, TEXAS 76010 (817) 461-7700
 3008 SOUTH FREEMAN FORT WORTH, TEXAS 76110 (817) 928-0212



- NOTES:**
- LIMITS OF CONCRETE PAVEMENT OR CURB REPLACEMENT BY UTILITY CONTRACTOR
 - LIMITS OF SAW CUT AND REMOVAL OF EXISTING CONCRETE PAVEMENT OR EXISTING CURB BY UTILITY CONTRACTOR
 - LIMITS OF SAW CUT AND REMOVAL OF EXISTING CONCRETE PAVEMENT OR EXISTING CURB BY PAVING CONTRACTOR

- NOTES:**
- 1.) ALL EXISTING WATER VALVES, FIRE HYDRANTS AND SANITARY SEWER MANHOLES ARE TO REMAIN IN PLACE UNLESS OTHERWISE NOTED.
 - 2.) TRENCHING FOR CONNECTIONS TO EXISTING UTILITIES/STORM DRAINS SHALL BE BACKFILLED WITH NATIVE MATERIAL MECHANICALLY COMPACTED IN MAXIMUM 10" LOOSE LIFTS TO A MINIMUM OF 95% PROCTOR DENSITY WITHIN 3' (THREE) FEET OF OPTIMUM MOISTURE CONTENT.