

**RECORD PLANS**

2-13-96

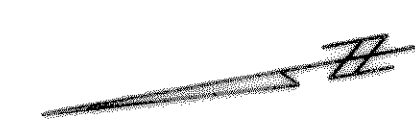
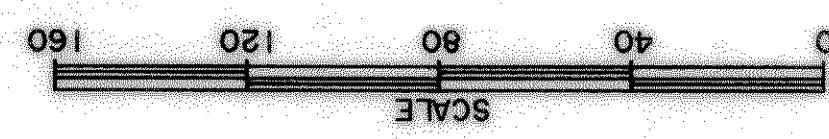
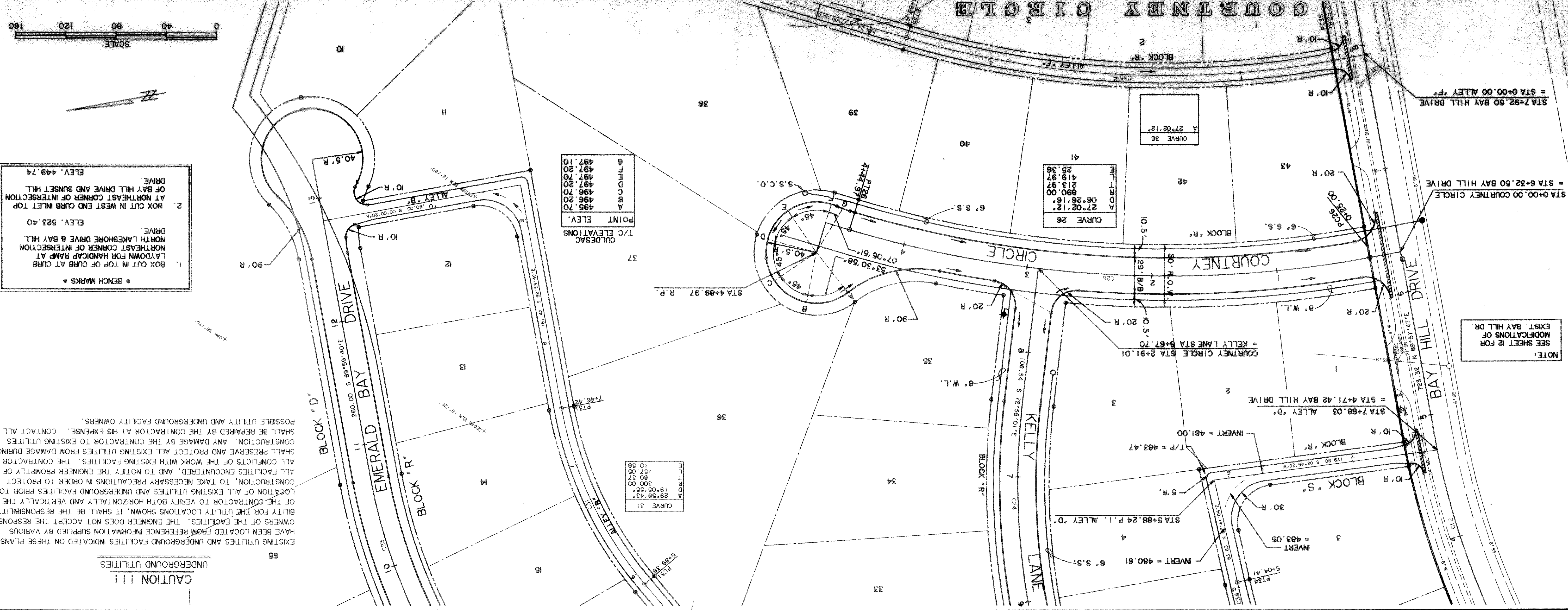
SHEET NO. 1

WIER & ASSOCIATES, INC.  
 LAST SHEET EDIT  
 DATE 03-01-95  
 FILE PAVE  
 W/M 93065



**COURTNEY CIRCLE  
 PLAN AND PROFILE  
 STA 0+00 TO STA 4+89.97**

**HILLCREST SHORES  
 PHASE II  
 CITY OF ROCKWALL,  
 ROCKWALL COUNTY, TEXAS**



- 1. BOX CUT IN TOP OF CURB AT CURB LAYDOWN FOR HANDICAP RAMP AT NORTHEAST CORNER OF INTERSECTION NORTH LAKESHORE DRIVE & BAY HILL DRIVE. ELEV. 523.40
- 2. BOX CUT IN WEST END CURB INLET TOP AT BAY HILL DRIVE AND SUNSET HILL DRIVE. ELEV. 449.74

CULDESAC POINT ELEV.

495.70
496.20
496.70
497.20
497.70
498.20
497.10
497.20
497.10

CURVE DATA

27°02'12"
06°26'16"
890.00
213.97
25.36
25.36

CURVE DATA

29°58'43"
19°05'53"
300.00
80.57
127.05
10.58

EXISTING UTILITIES AND UNDERGROUND FACILITIES INDICATED ON THESE PLANS HAVE BEEN LOCATED FROM REFERENCE INFORMATION SUPPLIED BY VARIOUS OWNERS OF THE FACILITIES. THE ENGINEER DOES NOT ACCEPT THE RESPONSIBILITY FOR THE UTILITY LOCATIONS SHOWN, IT SHALL BE THE RESPONSIBILITY OF THE CONTRACTOR TO VERIFY BOTH HORIZONTALLY AND VERTICALLY THE LOCATION OF ALL EXISTING UTILITIES AND UNDERGROUND FACILITIES PRIOR TO CONSTRUCTION, TO TAKE NECESSARY PRECAUTIONS IN ORDER TO PROTECT ALL FACILITIES ENCOUNTERED, AND TO NOTIFY THE ENGINEER PROMPTLY OF ALL CONFLICTS OF THE WORK WITH EXISTING UTILITIES. THE CONTRACTOR SHALL PRESERVE AND PROTECT ALL EXISTING UTILITIES FROM DAMAGE DURING CONSTRUCTION. ANY DAMAGE BY THE CONTRACTOR AT HIS EXPENSE. CONTACT ALL POSSIBLE UTILITY AND UNDERGROUND FACILITY OWNERS.

CAUTION !!!  
 UNDERGROUND UTILITIES

NOTE:  
 SEE SHEET 12 FOR  
 MODIFICATIONS OF  
 EXIST. BAY HILL DR.

PREPARED BY:  
**WIA WIER & ASSOCIATES, INC.**  
 ENGINEERS SURVEYORS LAND PLANNERS  
 4300 BELTWAY PLACE SUITE 130 ARLINGTON, TEXAS 76010 MEMO (817)467-7700  
 3908 SOUTH FREEMAN FORT WORTH, TEXAS 76110 (817)928-0212