

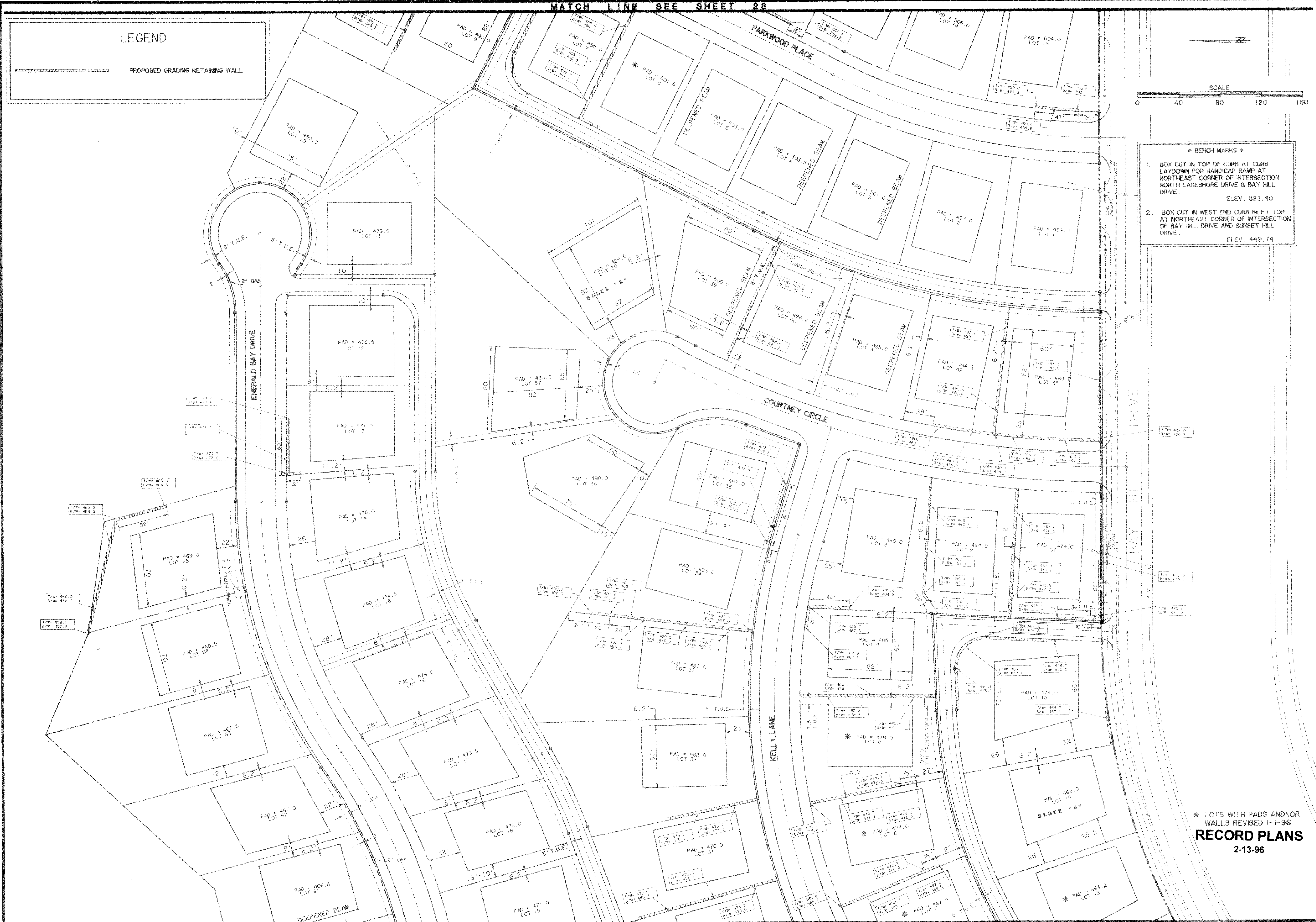
LEGEND

PROPOSED GRADING RETAINING WALL



* BENCH MARKS *

- 1. BOX CUT IN TOP OF CURB AT CURB LAYDOWN FOR HANDICAP RAMP AT NORTHEAST CORNER OF INTERSECTION NORTH LAKESHORE DRIVE & BAY HILL DRIVE. ELEV. 523.40
- 2. BOX CUT IN WEST END CURB INLET TOP AT NORTHEAST CORNER OF INTERSECTION OF BAY HILL DRIVE AND SUNSET HILL DRIVE. ELEV. 449.74

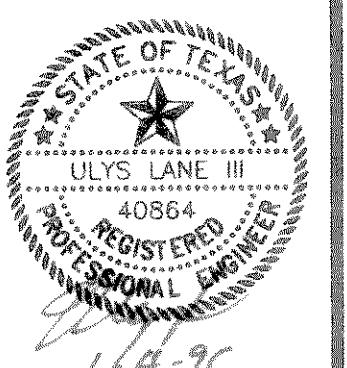


* LOTS WITH PADS AND/OR WALLS REVISED I-I-96
RECORD PLANS
 2-13-96

PREPARED BY:
VIA WIER & ASSOCIATES, INC.
 ENGINEERS SURVEYORS LAND PLANNERS
 4300 BELLEVUE PLACE SUITE 130 ARLINGTON, TEXAS 76018 METRO (817) 467-7700
 3908 SOUTH FREEMAN FORT WORTH, TEXAS 76110 (817) 926-0212

**HILLCREST SHORES
 PHASE II
 CITY OF ROCKWALL,
 ROCKWALL COUNTY, TEXAS**

**RETAINING WALL
 PLAN CENTER**



Copyright © WIER & ASSOCIATES, INC.
 LAST SHEET EDIT DATE 01-04-96
 FILE NETWORK WA# 93065
SHEET NO. 29