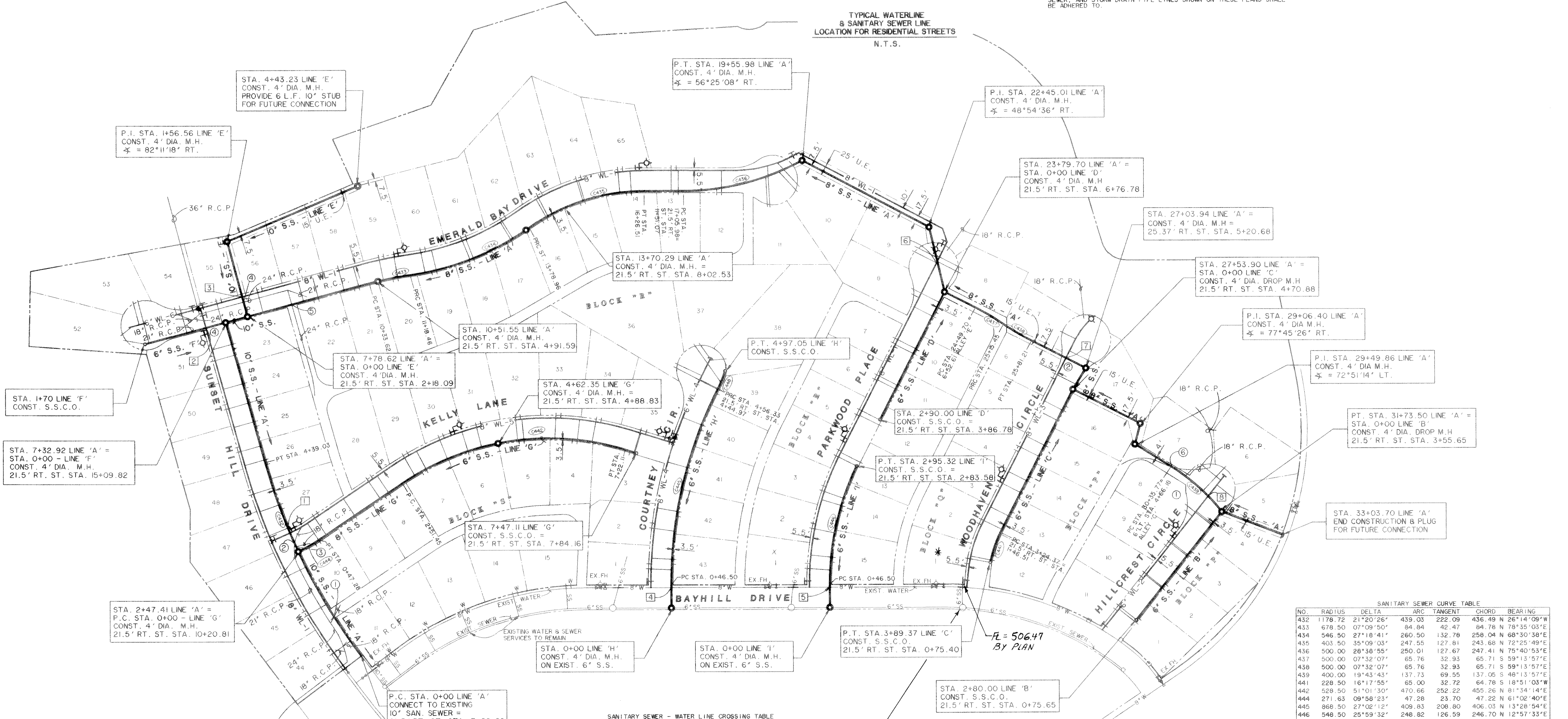
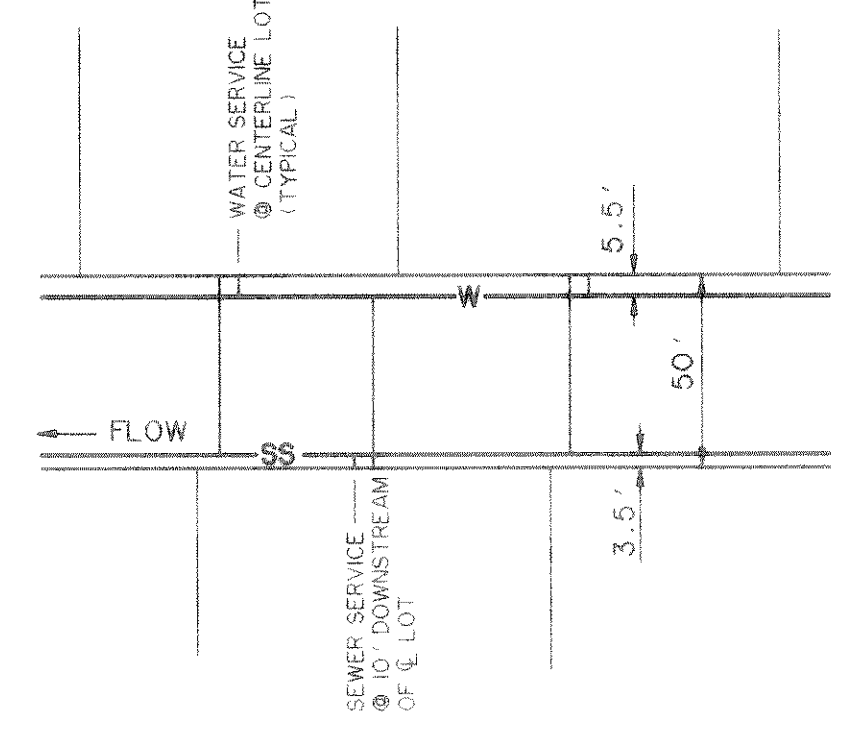


SANITARY SEWER GENERAL NOTES

- UNLESS OTHERWISE NOTED, ALL MATERIAL AND CONSTRUCTION SHALL CONFORM TO THE CURRENT CITY OF ROCKWALL STANDARDS OF DESIGN STANDARD SPECIFICATIONS FOR CONSTRUCTION, STANDARD DETAILS FOR THE CITY OF ROCKWALL MANUAL.
- WHENEVER SANITARY SEWER MAINS ARE LOCATED IN THE STREET, IT SHALL BE PLACED 7 FEET BACK OF CURB, UNLESS OTHERWISE SHOWN ON PLANS. ALL WATER AND SANITARY SEWER MAINS SHALL HAVE A 10.0 FEET MINIMUM LATERAL SEPARATION.
- SEWER PIPE AND SERVICES SHALL BE SDR35 P.V.C. GRAVITY PIPE UNLESS SHOWN OTHERWISE ON THESE PLANS.
- IN THE EVENT AN ITEM IS NOT COVERED IN THE CITY OF ROCKWALL STANDARD SPECIFICATIONS FOR CONSTRUCTION, THE CITY ENGINEER'S DECISION SHALL APPLY.
- AT WATER AND SEWER MAIN CROSSINGS, SEWER PIPE JOINTS SHALL NOT BE LOCATED CLOSER THAN TEN HORIZONTAL FEET FROM THE WATER MAIN. IF THIS CONDITION CANNOT BE ADHERED TO, THE SEWER PIPE JOINTS SHALL BE PRESSURE TYPE. (150 P.S.I. MINIMUM)
- THE GENERAL CROSSING LOCATIONS FOR STORM DRAIN PIPES ARE SHOWN AND DENOTED HEREON. THE CONTRACTOR SHALL BE RESPONSIBLE FOR LOCATING THE STORM DRAIN CROSSING FROM THE PLAN INFORMATION PROVIDED HEREON AND ELSEWHERE IN THESE PLANS. THE VERTICAL CLEARANCES BETWEEN WATER, SANITARY SEWER, AND STORM DRAIN PIPE LINES SHOWN ON THESE PLANS SHALL BE ADHERED TO.
- ALL SANITARY SEWER SERVICE LATERALS SHALL INCLUDE 4" WYE, BEND, PIPE, AND STOPPER INSTALLED 10.0 FEET DOWNSTREAM OF THE CENTERLINE OF LOTS, UNLESS OTHERWISE SHOWN ON PLANS.
- TRENCH WALLS SHALL BE CONSTRUCTED IN STRICT ACCORDANCE WITH THE LATEST OCCUPATIONAL SAFETY AND HEALTH ADMINISTRATION STANDARDS AND MAY BE SLOPED OR VERTICAL ABOVE THE PIPE EMBEDMENT AT THE CONTRACTOR'S OPTION. IN SOME LOCATIONS, THE AVAILABLE WORKING AREA MAY BE INADEQUATE TO ALLOW FOR FULLY SLOPED TRENCH WALLS. IN THESE AREAS, THE CONTRACTOR SHALL PROVIDE TEMPORARY SHEETING, SHORING OR BRACING OF TRENCH WALLS, AS NECESSARY, IN STRICT ACCORDANCE WITH O.S.H.A. STANDARDS, TO PREVENT SLIDES, CAVE-INS, SETTLEMENT OR MOVEMENT OF THE BANKS AND TO PROVIDE SAFE WORKING CONDITIONS FOR WORKMEN. PAYMENT FOR SLOPED OR SHEETED, SHORED OR BRACED TRENCH WALLS CONSTRUCTED IN ACCORDANCE WITH O.S.H.A. STANDARDS SHALL BE LIMITED TO THE BID ITEMS IN THE PROPOSAL, FOR TRENCH SAFETY SYSTEMS. CONSTRUCTION SHALL BE LIMITED TO THE STREET RIGHT-OF-WAY, PERMANENT EASEMENTS AND AREAS DELINEATED AS LIMITS OF CONSTRUCTION AS SHOWN ON THE PLANS.
- CAUTION: SANITARY SEWER LINE IS IN CLOSE PROXIMITY OF STORM DRAIN BOTH HORIZONTALLY AND VERTICALLY.



SANITARY SEWER - WATER LINE CROSSING TABLE

S.S. SIZE & F.L.	WATERLINE SIZE & T.O.P.
1) 10" S.S. - 436.79	8" W - 446.8
2) 6" S.S. - 441.14	8" W - 445.3
3) 10" S.S. - 440.84	8" W - 447.5
4) 6" S.S. - 473.62	8" W - 476.54
5) 6" S.S. - 490.06	8" W - 493.54
6) 8" S.S. - 472.85	8" W - 478.3
7) 8" S.S. - 479.19	8" W - 483.0
8) 8" S.S. - 488.38	8" W - 492.8

STORM DRAIN - SANITARY SEWER CROSSING TABLE

S.D. SIZE & F.L.	S.S. SIZE & F.L.
1) 18" SD - 444.47	10" SS - 438.29
2) 18" SD - 446.66	10" SS - 438.72
3) 18" SD - 446.92	10" SS - 438.70
4) 24" SD - 446.15	8" SS - 440.80
5) 24" SD - 449.01	8" SS - 445.25
6) 18" SD - 491.55	8" SS - 487.75

SANITARY SEWER CURVE TABLE

NO.	RADIUS	DELTA	ARC	TANGENT	CHORD	BEARING
432	1178.72	21°20'26"	439.03	222.09	436.49	N 26°14'09"W
433	678.50	07°09'50"	84.84	42.47	84.78	N 78°55'03"E
434	546.50	27°18'41"	260.50	132.78	258.04	N 68°30'38"E
435	403.50	35°09'03"	247.55	127.81	243.68	N 72°25'49"E
436	500.00	28°38'55"	250.01	127.67	247.41	N 75°40'53"E
437	500.00	07°32'07"	65.76	32.93	65.71	S 59°13'57"E
438	500.00	07°32'07"	65.76	32.93	65.71	S 59°13'57"E
439	400.00	19°43'43"	137.73	69.55	137.05	S 48°13'57"E
441	228.50	16°17'55"	65.00	32.72	64.78	S 18°51'03"W
442	528.50	51°01'30"	470.66	252.22	455.26	N 81°34'14"E
444	271.63	09°50'23"	47.28	23.70	47.22	N 61°02'40"E
445	868.50	27°02'12"	409.83	208.80	406.03	N 13°28'54"E
446	548.50	25°59'32"	248.82	126.59	246.70	N 12°57'33"E
448	250.00	09°20'00"	40.72	20.41	40.68	N 22°20'00"E

* SANITARY SEWER SERVICE FOR LOT 1, BLOCK "Q", CHANGED TO CONNECT TO EXISTING 6" S.S. STUB-OUT FROM BAYHILL DRIVE INSTEAD OF SERVICE FROM WOODHAVEN CIRCLE.

- BENCH MARKS •
- BOX CUT IN TOP OF CURB AT CURB LAYDOWN FOR HANDICAP RAMP AT NORTHEAST CORNER OF INTERSECTION NORTH LAKESHORE DRIVE & BAY HILL DRIVE. ELEV. 523.40
 - BOX CUT IN WEST END CURB INLET TOP AT NORTHEAST CORNER OF INTERSECTION OF BAY HILL DRIVE AND SUNSET HILL DRIVE. ELEV. 449.74

