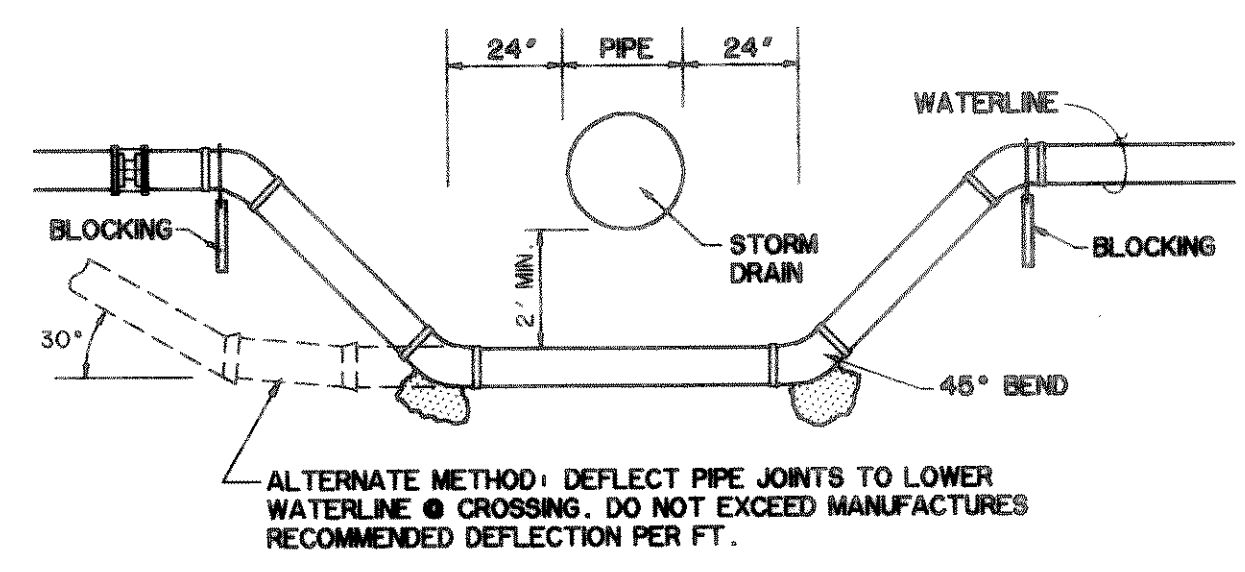
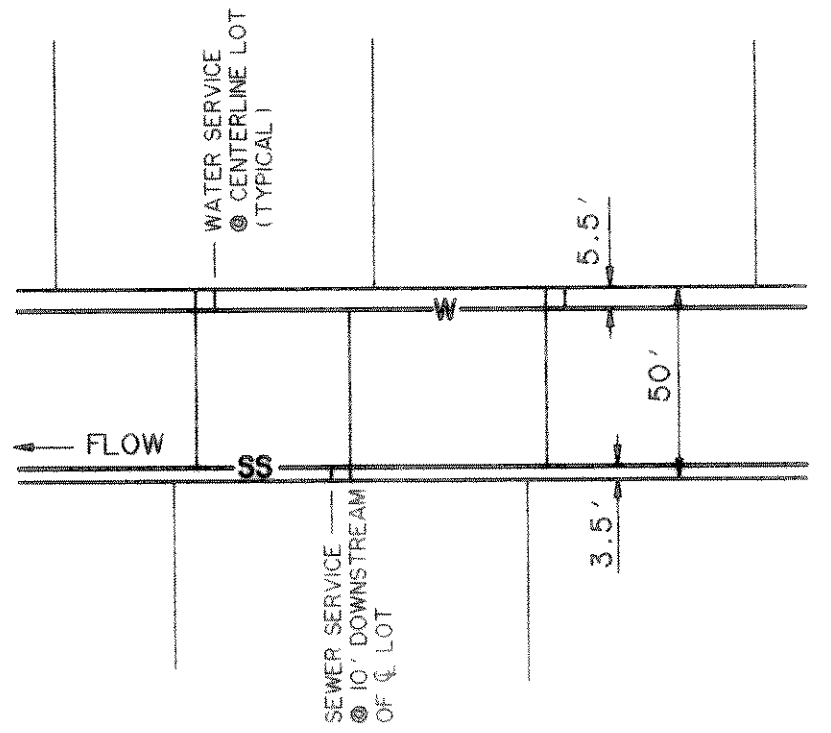


WATER LINE CURVE TABLE

NO.	RADIUS	DELTA	ARC	TANGENT	CHORD	BEARING
425	250.00	30°53'19"	134.76	69.07	133.15	N 74°33'40"E
426	589.50	27°02'12"	278.17	141.73	275.60	S 13°28'54"W
429	230.63	10°06'25"	40.68	20.39	40.63	N 61°06'42"E



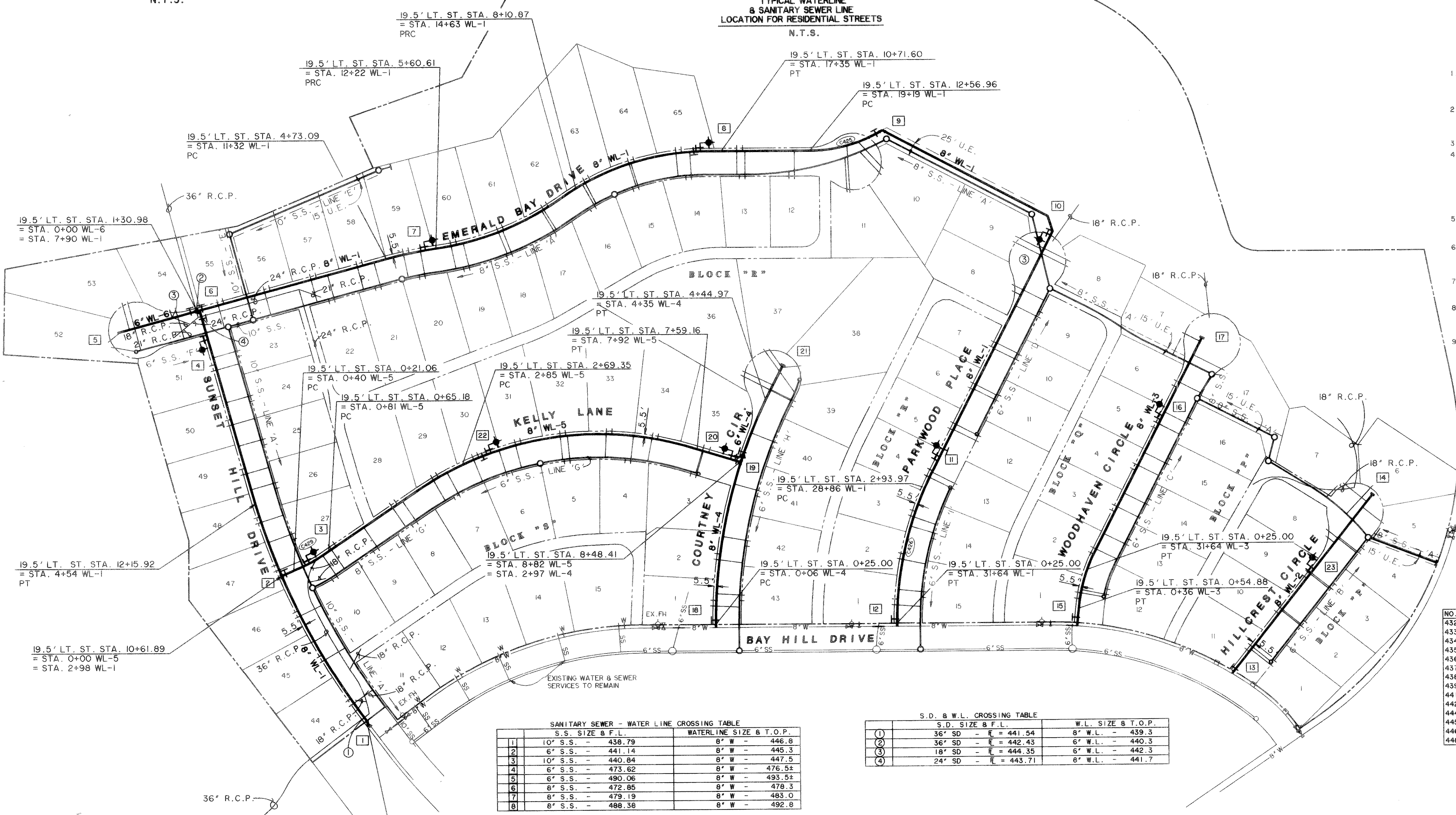
STORM DRAIN CROSSING DETAIL
 N.T.S.



TYPICAL WATERLINE & SANITARY SEWER LINE LOCATION FOR RESIDENTIAL STREETS
 N.T.S.

- FITTINGS LIST**
- STA. 0+00 WL-1
REMOVE PLUG & CONNECT TO EXISTING 8" WATER
 - STA. 2+98 WL-1 = STA. 0+30 WL-5
INSTALL:
1- 8" x 8" TEE
1- 8" G.V. & BOX
 - STA. 0+54 WL-5
INSTALL:
1- 8" x 6" TEE
1- 6" G.V. & BOX
1- 6" ANCHORING ELBOW
1- FIRE HYDRANT
 - STA. 7+36 WL-1
INSTALL:
1- 8" x 6" TEE
1- 6" G.V. & BOX
1- 6" ANCHORING ELBOW
1- FIRE HYDRANT
 - STA. 1+50 WL-6
INSTALL:
1- 6" PLUG & BLOCKING
 - STA. 7+90 WL-1 = STA. 0+00 WL-6
INSTALL:
1- 8" x 8" TEE
1- 8" G.V. & BOX
2- 8" G.V. & BOX
1- 6" ANCHORING ELBOW
1- FIRE HYDRANT
 - STA. 12+16 WL-1
INSTALL:
1- 8" x 6" TEE
1- 6" G.V. & BOX
1- 6" ANCHORING ELBOW
1- FIRE HYDRANT
 - STA. 17+35 WL-1
INSTALL:
1- 8" x 6" TEE
1- 6" G.V. & BOX
1- 6" ANCHORING ELBOW
1- FIRE HYDRANT
 - STA. 20+53 WL-1
INSTALL:
1- 8" G.V. & BOX
1- 8" 45° BEND
1- 8" 1 1/4" BEND
 - STA. 24+02 WL-1
INSTALL:
2- 8" 45° BENDS
1- 8" x 6" TEE
1- 6" G.V. & BOX
1- 6" ANCHORING ELBOW
1- FIRE HYDRANT
 - STA. 28+44 WL-1
INSTALL:
1- 8" x 6" TEE
1- 6" G.V. & BOX
1- 6" ANCHORING ELBOW
1- FIRE HYDRANT
 - STA. 31+69 WL-1
INSTALL:
1- 8" x 8" TAPPING SLEEVE & VALVE
 - STA. 0+00 WL-2
INSTALL:
1- 8" x 8" TAPPING SLEEVE & VALVE
 - STA. 4+03 WL-2
INSTALL:
1- 6" PLUG & BLOCKING
 - STA. 0+00 WL-3
INSTALL:
1- 8" x 8" TAPPING SLEEVE & VALVE
 - STA. 4+19 WL-3
INSTALL:
1- 8" x 6" TEE
1- 6" G.V. & BOX
1- 6" ANCHORING ELBOW
1- FIRE HYDRANT
 - STA. 5+60 WL-3
INSTALL:
1- 8" x 6" TEE
1- 6" G.V. & BOX
1- 6" ANCHORING ELBOW
1- FIRE HYDRANT
 - STA. 0+00 WL-4
INSTALL:
1- 8" x 8" TAPPING SLEEVE & VALVE
 - STA. 2+97 WL-4 = STA. 8+82 WL-5
INSTALL:
1- 8" x 8" TEE
1- 8" G.V. & BOX
1- 8" x 6" REDUCER
1- 8" G.V. & BOX
 - STA. 0+00 WL-5
INSTALL:
1- 8" x 6" TEE
1- 6" G.V. & BOX
1- 6" ANCHORING ELBOW
1- FIRE HYDRANT
 - STA. 8+67 WL-5
INSTALL:
1- 8" x 6" TEE
1- 6" G.V. & BOX
1- 6" ANCHORING ELBOW
1- FIRE HYDRANT
 - STA. 4+85 WL-4
INSTALL:
1- 8" x 6" TEE
1- 6" G.V. & BOX
1- 6" ANCHORING ELBOW
1- FIRE HYDRANT
 - STA. 4+47 WL-5
INSTALL:
1- 8" x 6" TEE
1- 6" G.V. & BOX
1- 6" ANCHORING ELBOW
1- FIRE HYDRANT
 - STA. 2+55 WL-2
INSTALL:
1- 8" x 6" TEE
1- 6" G.V. & BOX
1- 6" ANCHORING ELBOW
1- FIRE HYDRANT

- WATER LINE GENERAL NOTES**
- UNLESS OTHERWISE NOTED, ALL MATERIAL AND CONSTRUCTION SHALL CONFORM TO THE CURRENT CITY OF ROCKWALL "STANDARDS OF DESIGN, STANDARD SPECIFICATIONS FOR CONSTRUCTION, STANDARD DETAILS FOR THE CITY OF ROCKWALL" MANUAL.
 - ALL DUCTILE IRON FITTINGS SHALL BE OF THE MECHANICAL JOINT TYPE OR SLIP JOINT, EXCEPT AS NOTED, AND SHALL BE CLASS "D" OR CLASS 250 ON SIZES 12" AND SMALLER IN ACCORDANCE WITH ANNA SPECIFICATION C-1111-64.
 - WATER MAINS SHALL HAVE A MINIMUM COVER OF 36".
 - FIRE HYDRANTS SHALL BE EITHER MUELLER, AMERICAN DARLING OR AN APPROVED EQUAL CONFORMING TO THE REQUIREMENTS SET FORTH IN THE CITY OF ROCKWALL "STANDARD SPECIFICATIONS FOR CONSTRUCTION". ALL FIRE HYDRANTS SHALL BE INSTALLED WITH A 6-INCH GATE VALVE ON THE HYDRANT LEAD AND WILL BE PLACED 7 FEET FROM BACK OF CURB UNLESS OTHERWISE INDICATED ON THE PLANS OR AS REQUIRED TO CLEAR SIDEWALK. DO NOT PLACE FIRE HYDRANTS IN STREET CURB RETURNS.
 - FIRE HYDRANT BONNETS AND CAPS WILL BE PAINTED TO CONFORM WITH CITY SPECIFICATIONS FOR COLOR CODE AS SET FORTH IN THE "STANDARD SPECIFICATIONS FOR CONSTRUCTION".
 - GATE VALVES SHALL BE MANUFACTURED BY MUELLER OR KENNEDY, OR AN APPROVED EQUAL AND SHALL CONFORM TO AND SHALL BE INSTALLED ACCORDING TO THE CITY OF ROCKWALL "STANDARD SPECIFICATIONS FOR CONSTRUCTION".
 - FLUSH VALVES OR AN APPROVED EQUAL SHALL BE INSTALLED ON ALL DEAD-END WATER LINES AND SHALL COMPLY WITH THE CITY OF ROCKWALL STANDARD DETAILS.
 - WHENEVER SANITARY SEWER MAINS ARE LOCATED IN THE STREET, IT SHALL BE PLACED 7 FEET BACK OF CURB, UNLESS OTHERWISE SHOWN ON PLANS. ALL WATER AND SANITARY SEWER MAINS SHALL HAVE A 10.0 FEET MINIMUM LATERAL SEPARATION.
 - IN THE EVENT AN ITEM IS NOT COVERED IN THE CITY OF ROCKWALL "STANDARD SPECIFICATIONS FOR CONSTRUCTION", THE CITY ENGINEER'S DECISION SHALL APPLY.



SANITARY SEWER - WATER LINE CROSSING TABLE

S.S. SIZE & F.L.	WATERLINE SIZE & T.O.P.
10" S.S. - 438.79	8" W - 446.8
6" S.S. - 441.14	8" W - 445.3
10" S.S. - 440.84	8" W - 447.5
6" S.S. - 473.62	8" W - 476.52
6" S.S. - 490.06	8" W - 493.52
8" S.S. - 472.85	8" W - 479.3
8" S.S. - 479.19	8" W - 483.0
8" S.S. - 488.38	8" W - 492.8

S.D. & W.L. CROSSING TABLE

S.D. SIZE & F.L.	W.L. SIZE & T.O.P.
36" SD - E = 441.54	8" W.L. - 439.3
36" SD - E = 442.43	6" W.L. - 440.3
18" SD - E = 444.35	6" W.L. - 442.3
24" SD - E = 443.71	6" W.L. - 441.7

STORM DRAIN - SANITARY SEWER CROSSING TABLE

S.D. SIZE & F.L.	S.S. SIZE & F.L.
18" SD - 444.47	10" SS - 438.29
18" SD - 446.65	10" SS - 438.72
18" SD - 446.52	10" SS - 438.70
24" SD - 446.15	8" SS - 440.80
24" SD - 449.01	8" SS - 445.25
18" SD - 491.55	8" SS - 487.75

SANITARY SEWER CURVE TABLE

NO.	RADIUS	DELTA	ARC	TANGENT	CHORD	BEARING
432	1178.72	21°20'26"	439.03	222.09	436.49	N 26°14'09"E
433	678.50	07°09'50"	84.84	42.47	84.78	N 78°35'03"E
434	546.50	27°18'41"	260.50	132.78	258.04	N 68°30'36"E
435	403.50	35°09'03"	247.55	127.81	243.68	N 72°25'49"E
436	500.00	28°38'55"	250.01	127.67	247.41	N 75°40'53"E
437	500.00	07°32'09"	65.76	32.93	65.71	S 59°13'57"E
438	500.00	07°32'07"	65.76	32.93	65.71	S 59°13'57"E
439	400.00	19°43'43"	137.73	69.55	137.05	S 48°13'57"E
441	228.50	16°17'55"	65.00	32.72	64.78	S 18°51'03"W
442	528.50	51°01'30"	470.66	252.22	455.26	N 81°34'14"E
444	271.63	09°58'23"	47.28	23.70	47.22	N 61°02'40"E
445	868.50	27°02'12"	409.83	208.80	406.03	N 13°28'54"E
446	549.50	55°59'32"	248.82	126.59	246.70	N 12°57'53"E
448	250.00	09°20'00"	40.72	20.41	40.68	N 22°20'00"E

- BENCH MARKS**
- BOX CUT IN TOP OF CURB AT CURB LAYDOWN FOR HANDICAP RAMP AT NORTHEAST CORNER OF INTERSECTION NORTH LAKESHORE DRIVE & BAY HILL DRIVE.
ELEV. 523.40
 - BOX CUT IN WEST END CURB INLET TOP AT NORTHEAST CORNER OF INTERSECTION BAY HILL DRIVE AND SUNSET HILL DRIVE.
ELEV. 449.74

