

**CAUTION !!!**  
UNDERGROUND UTILITIES

EXISTING UTILITIES AND UNDERGROUND FACILITIES INDICATED ON THESE PLANS HAVE BEEN LOCATED FROM REFERENCE INFORMATION SUPPLIED BY VARIOUS OWNERS OF THE FACILITIES. THE ENGINEER DOES NOT ACCEPT THE RESPONSIBILITY FOR THE UTILITY LOCATIONS SHOWN. IT SHALL BE THE RESPONSIBILITY OF THE CONTRACTOR TO VERIFY BOTH HORIZONTALLY AND VERTICALLY THE LOCATION OF ALL EXISTING UTILITIES AND UNDERGROUND FACILITIES PRIOR TO CONSTRUCTION, TO TAKE NECESSARY PRECAUTIONS IN ORDER TO PROTECT ALL FACILITIES ENCOUNTERED, AND TO NOTIFY THE ENGINEER PROMPTLY OF ALL CONFLICTS OF THE WORK WITH EXISTING FACILITIES. THE CONTRACTOR SHALL PRESERVE AND PROTECT ALL EXISTING UTILITIES FROM DAMAGE DURING CONSTRUCTION. ANY DAMAGE BY THE CONTRACTOR TO EXISTING UTILITIES SHALL BE REPAIRED BY THE CONTRACTOR AT HIS EXPENSE. CONTACT ALL POSSIBLE UTILITY AND UNDERGROUND FACILITY OWNERS.

- \* BENCH MARKS \***
- BOX CUT IN TOP OF CURB AT CURB LAYDOWN FOR HANDICAP RAMP AT NORTHEAST CORNER OF INTERSECTION NORTH LAKESHORE DRIVE & BAY HILL DRIVE.  
ELEV. 523.40
  - BOX CUT IN WEST END CURB INLET TOP AT NORTHEAST CORNER OF INTERSECTION OF BAY HILL DRIVE AND SUNSET HILL DRIVE.  
ELEV. 449.74

- NOTES:**
- ALL CONSTRUCTION WITHIN LAKE RAY HUBBARD PROJECT PROPERTY LIMITS SHALL CONFORM TO ALL CITY OF DALLAS STANDARDS AND SPECIFICATIONS.
  - NOTIFY DWJ CONSTRUCTION INSPECTION AT (214) 948-4562 48 HRS PRIOR TO CONSTRUCTION.

STA. 0+19.00 LINE "B"  
CONST. DBL. 48" TYPE "B" HDWL.  
SEE CITY OF DALLAS STANDARD CONSTRUCTION DETAILS FILE 251-D, PG. 2007

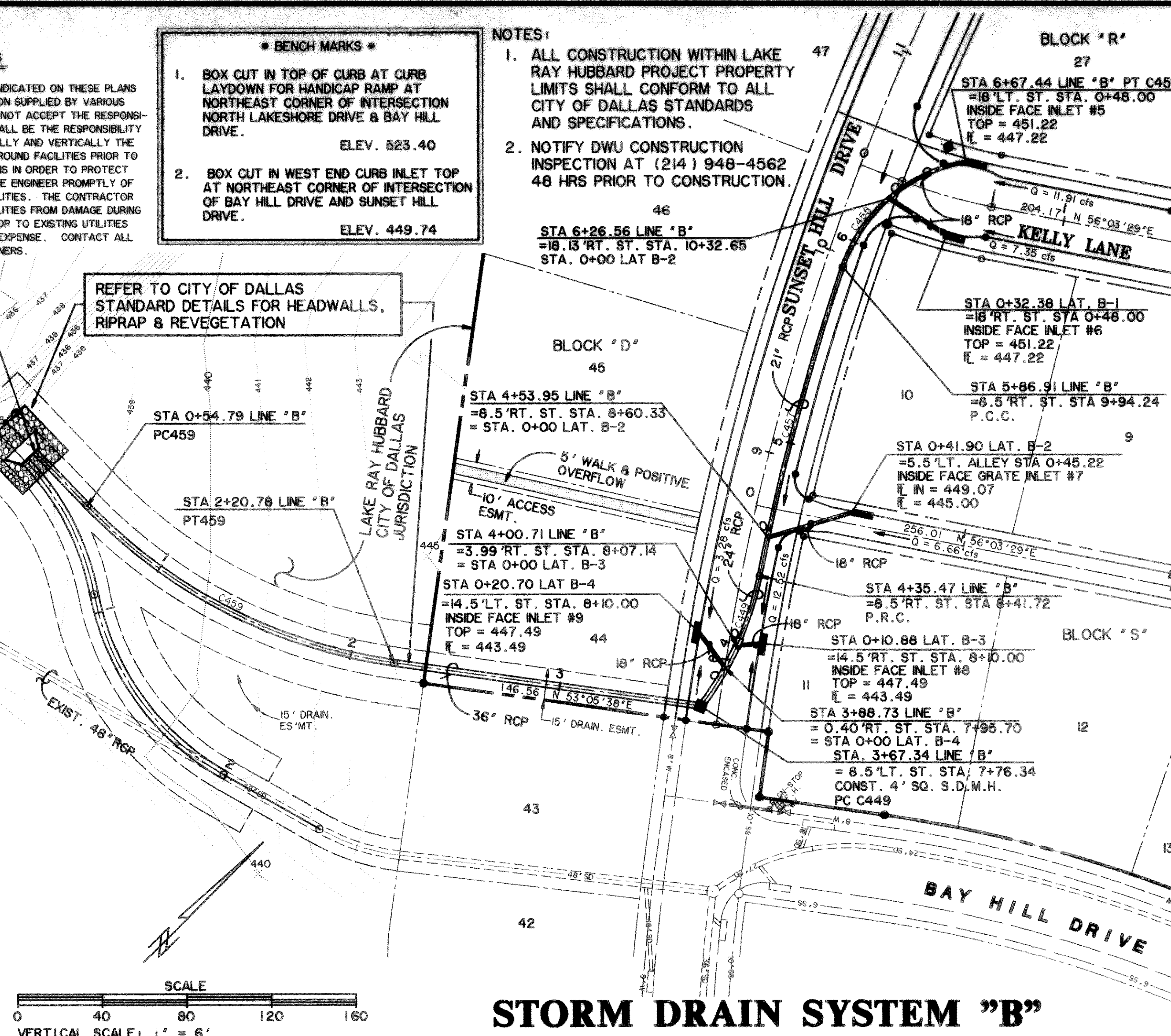
REFER TO CITY OF DALLAS STANDARD DETAILS FOR HEADWALLS, RIPRAP & REVEGETATION

LAKE RAY HUBBARD NORMAL  
E = 433.7  
W.S. = 435.5

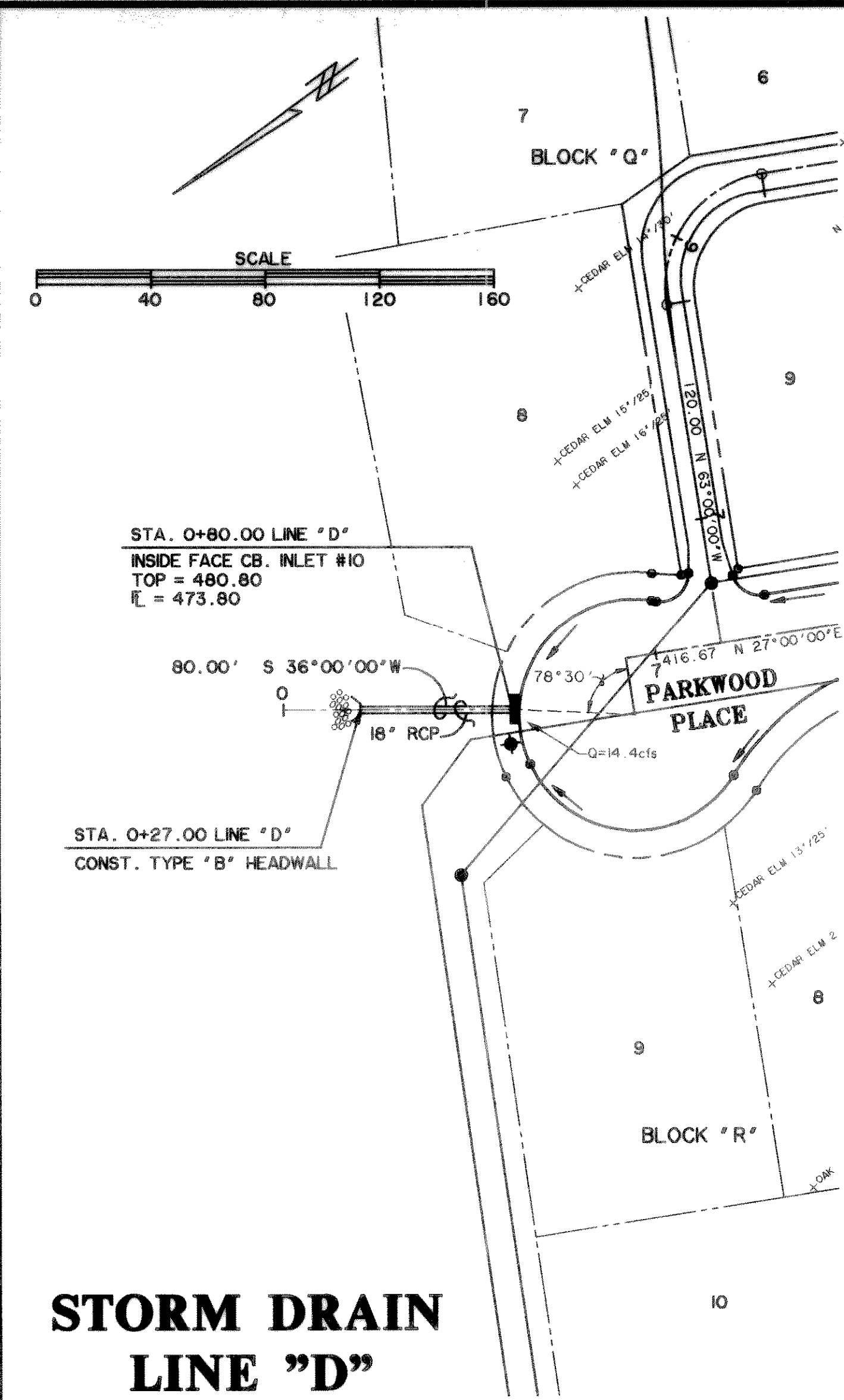
CURVE 459		CURVE 457	
A	38°02'29"	A	07°16'52"
D	22°55'06"	D	04°48'28"
R	250.00	R	1191.72
L	86.18	L	75.92
E	65.39	E	131.44
	14.44		2.41

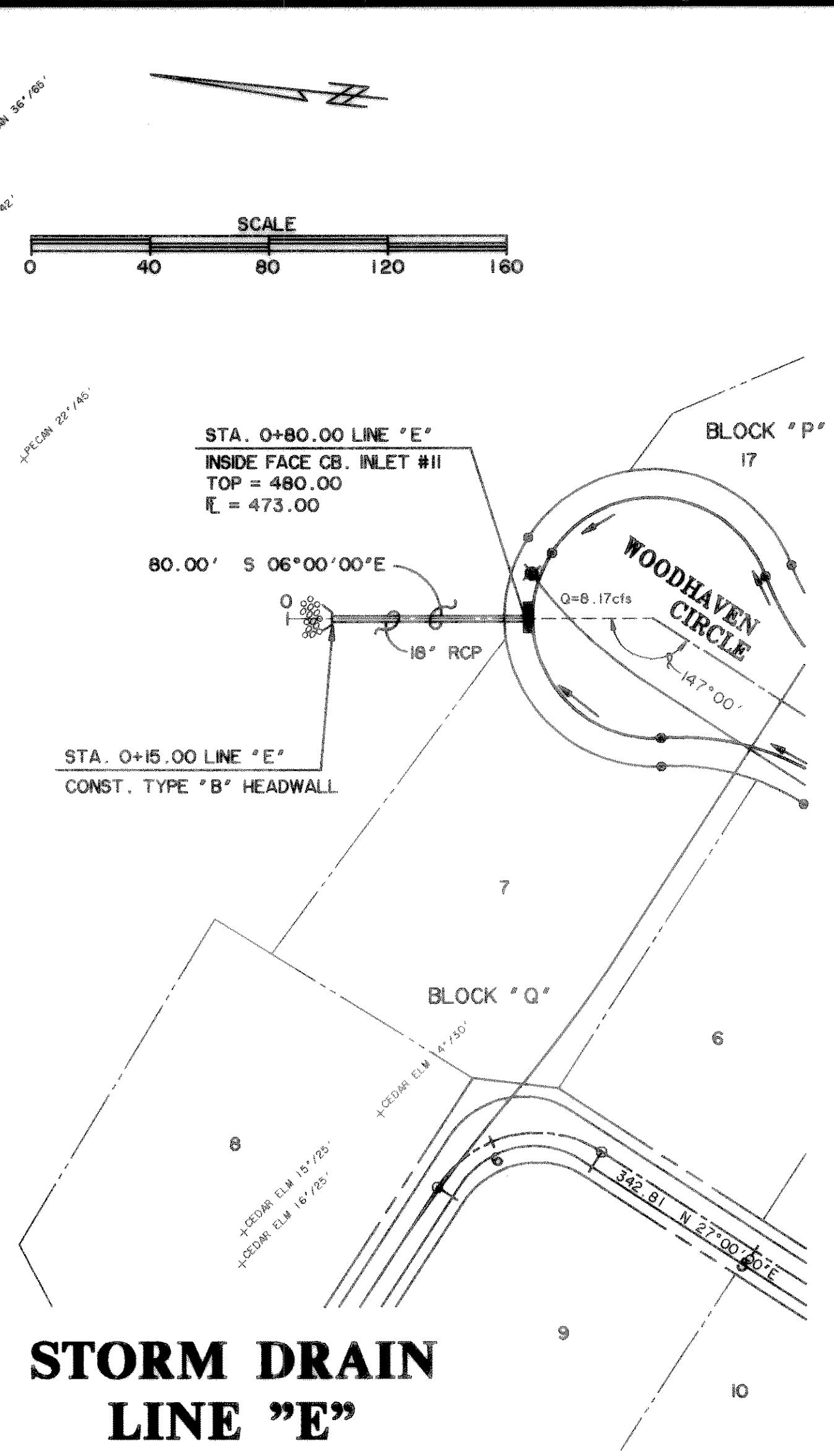
CURVE 449		CURVE 455	
A	26°01'22"	A	61°31'08"
D	38°11'50"	D	76°23'40"
R	150.00	R	75.00
L	34.66	L	44.64
E	69.13	E	80.53
	3.95		12.28



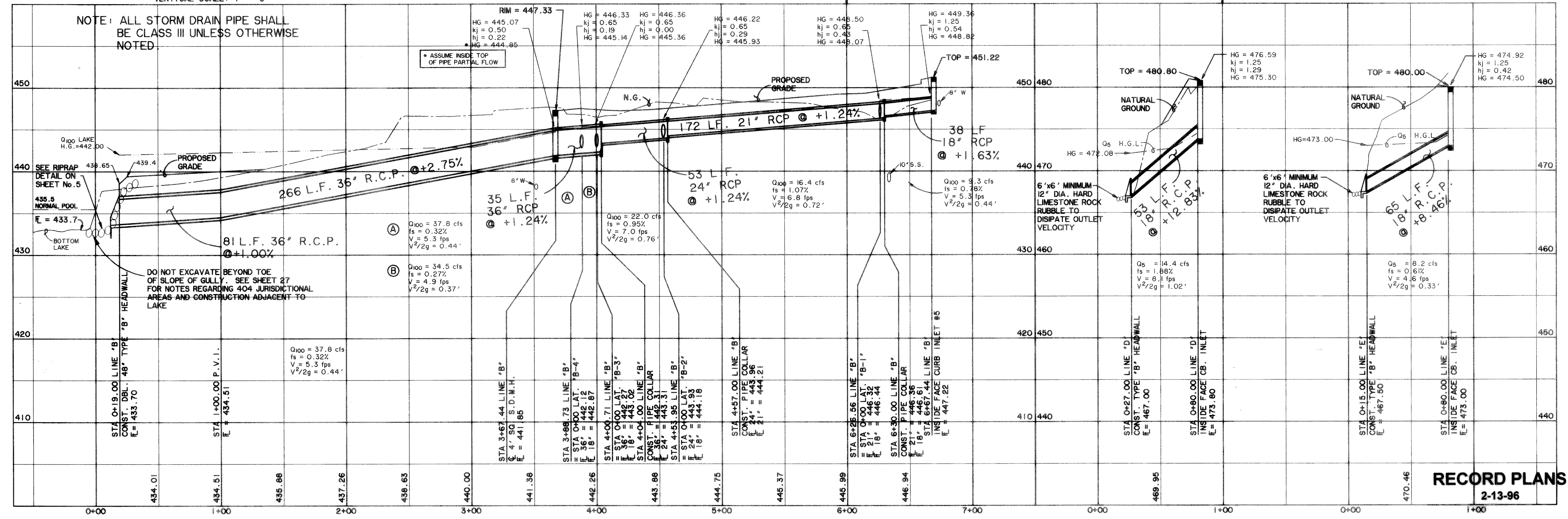
**STORM DRAIN SYSTEM "B"**



**STORM DRAIN LINE "D"**



**STORM DRAIN LINE "E"**

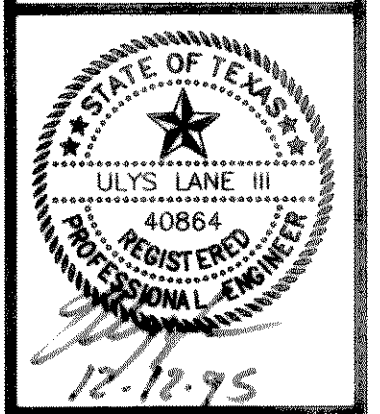


**RECORD PLANS**  
2-13-96

PREPARED BY:  
**WIER & ASSOCIATES, INC.**  
ENGINEERS SURVEYORS LAND PLANNERS  
4300 BELLEVUE PLACE SUITE 130 ARLINGTON TEXAS 76010 (817) 467-7700  
3908 SOUTH FREEMAN COURT NORTH, TEXAS 76110 (817) 926-0212

**HILLCREST SHORES  
PHASE II  
CITY OF ROCKWALL,  
ROCKWALL COUNTY, TEXAS**

**STORM DRAIN  
PLAN AND PROFILE  
SYSTEM "B"  
S.D. LINES "D" & "E"**



COPYRIGHT ©  
WIER & ASSOCIATES, INC.  
LAST SHEET EDIT  
DATE 05-16-96  
FILE 9902  
LWAH 93065  
**SHEET NO. 18**