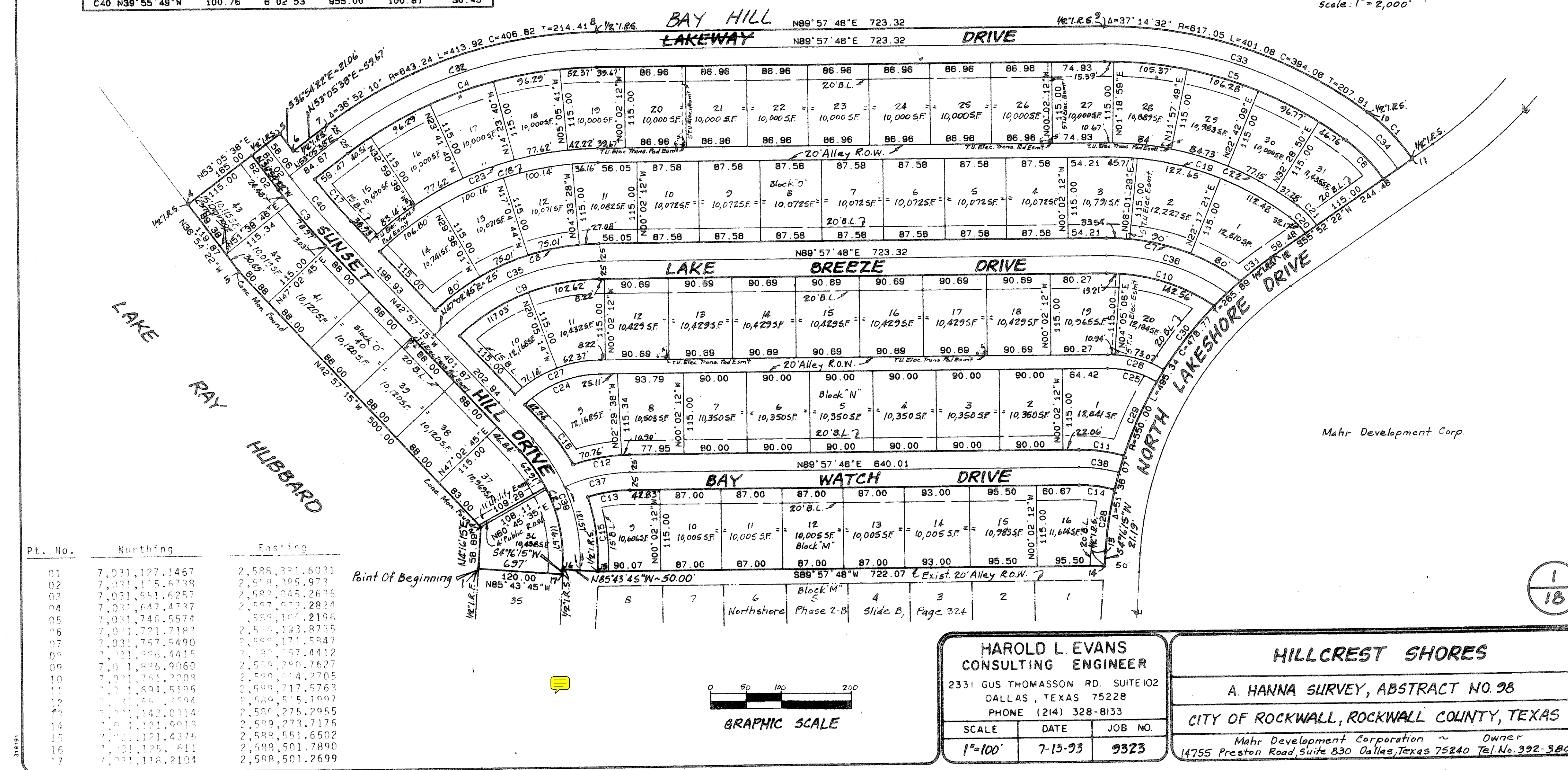
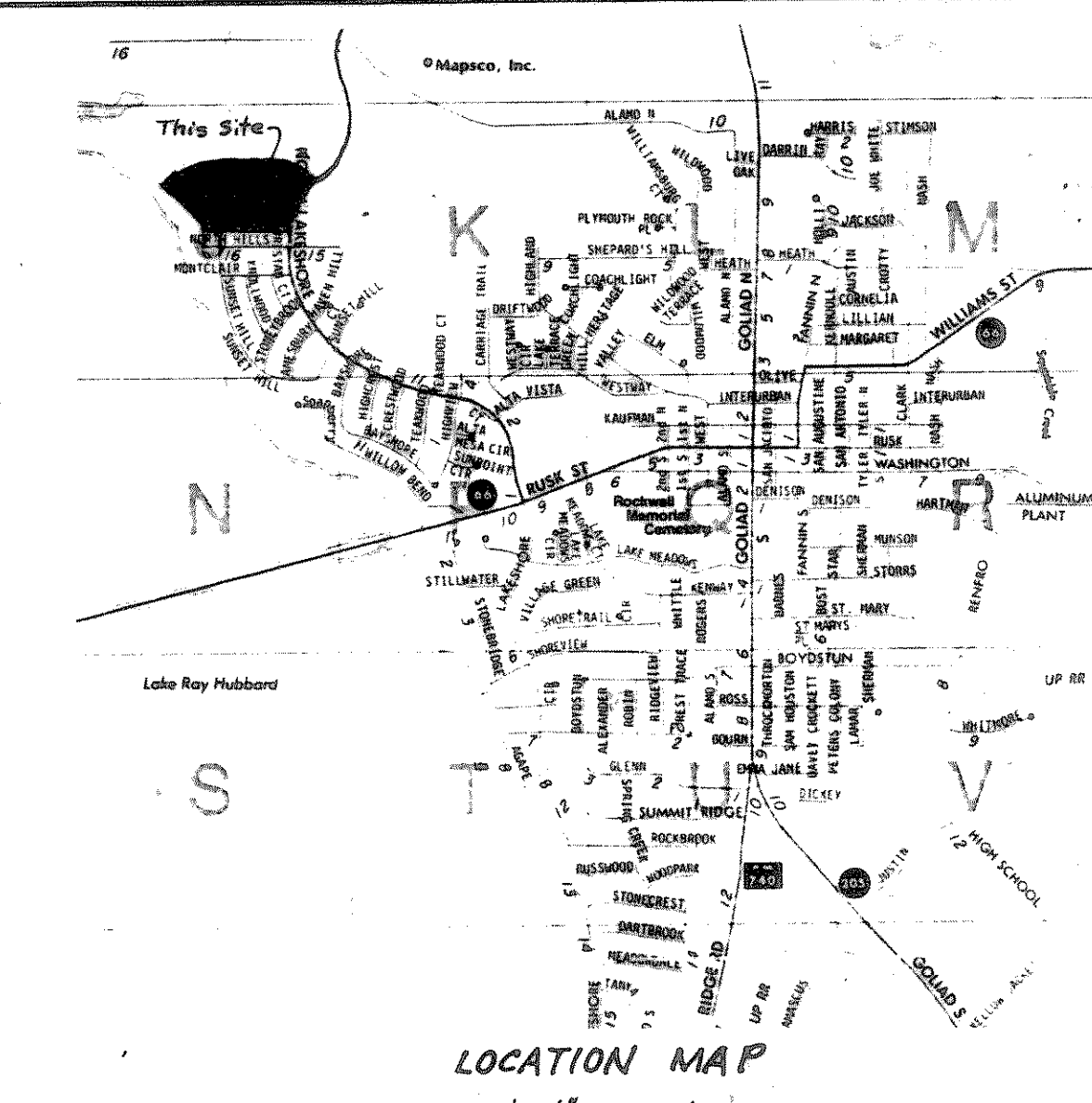


CURVE DATA						
NO	BEARING	CHORD	DELTA	RADIUS	LENGTH	TAN
C1	S43°27'40"E	92.03	18°40'02"	283.73	92.44	48.83
C2	N19°20'30"W	178.43	47°13'30"	222.73	183.58	97.37
C3	N36°55'49"W	103.40	8°02'53"	880.00	103.45	51.77
C4	N71°31'43"E	375.19	36°52'10"	593.24	381.75	197.74
C5	S71°24'57"E	362.12	37°14'32"	587.05	368.58	181.08
C6	S43°27'40"E	75.81	18°40'02"	233.73	76.15	38.42
C7	N71°38'42"W	200.08	36°47'01"	317.05	203.54	105.42
C8	S68°30'18"W	251.14	42°55'03"	343.24	257.10	134.92
C9	N68°30'18"E	214.55	42°55'03"	283.24	219.85	115.27
C10	S72°39'35"E	159.51	34°45'14"	287.05	161.98	83.57
C11	N61°59'56"W	84.48	18°04'33"	230.55	84.69	32.56
C12	S80°45'42"W	81.31	18°24'11"	254.25	81.88	41.19
C13	N81°23'36"E	60.87	17°08'23"	204.25	61.10	30.78
C14	S81°59'56"E	50.49	18°04'33"	180.55	50.86	25.50
C15	N07°00'43"W	106.72	22°33'55"	272.73	107.41	54.41
C16	N35°54'38"W	66.89	14°05'16"	272.73	67.06	33.70
C17	N40°31'01"W	79.10	4°52'29"	930.00	79.12	39.59
C18	N68°30'18"E	335.28	42°55'03"	458.24	343.24	180.12
C19	S71°24'57"E	275.91	37°14'32"	432.05	280.83	145.58
C20	S43°27'40"E	32.02	18°40'02"	98.73	32.17	16.23
C21	N43°27'40"W	36.51	18°40'02"	118.73	36.88	19.51
C22	N71°24'57"W	288.68	37°14'32"	452.05	293.83	152.32
C23	S68°30'18"W	349.91	42°55'03"	478.24	358.23	187.99
C24	N68°30'18"E	115.78	42°55'03"	158.24	119.53	62.20
C25	S71°11'07"E	472.14	31°42'11"	132.05	73.06	37.49
C26	N71°11'07"W	83.06	31°42'11"	152.05	84.13	43.17
C27	S68°30'18"W	130.41	42°55'03"	178.24	133.51	70.06
C28	N68°30'18"E	87.87	42°55'03"	118.24	87.98	44.07
C29	N24°38'04"E	114.79	11°58'48"	550.00	115.00	57.71
C30	N38°44'08"E	115.50	12°03'15"	550.00	115.71	58.07
C31	N52°58'39"E	55.56	5°47'25"	550.00	55.58	27.82
C32	N71°31'43"E	381.00	36°52'10"	618.24	387.83	208.08
C33	S71°24'57"E	378.09	37°14'32"	592.05	384.83	199.49
C34	S43°27'40"E	83.92	18°40'02"	258.73	84.30	42.52
C35	N68°30'18"E	232.84	42°55'03"	318.24	238.38	125.08
C36	S71°10'03"E	179.23	35°44'19"	292.05	182.17	94.16
C37	N78°03'32"E	94.58	23°48'32"	229.25	95.26	48.33
C38	S62°04'41"E	56.92	15°55'03"	205.55	57.10	28.74
C39	N19°20'30"W	198.46	47°13'30"	247.73	204.19	108.29
C40	N38°55'49"W	100.76	8°02'53"	955.00	100.81	50.45



Mahr Development Corp.



Pt. No.	Northing	Easting
01	7,031,127.1467	2,588,321.6031
02	7,031,155.6738	2,588,325.9737
03	7,031,551.4257	2,588,045.2635
04	7,031,647.4737	2,587,977.2824
05	7,031,746.5574	2,588,105.2196
06	7,031,721.7183	2,588,123.8735
07	7,031,757.5490	2,588,171.5847
08	7,031,896.4415	2,588,157.4412
09	7,031,896.9060	2,588,200.7627
10	7,031,761.2209	2,588,074.2705
11	7,031,694.5195	2,588,217.5763
12	7,031,551.3594	2,588,055.1067
13	7,031,147.0314	2,588,275.2955
14	7,031,121.0013	2,588,273.7176
15	7,031,121.4376	2,588,551.6502
16	7,031,125.6111	2,588,501.7890
17	7,031,118.2104	2,588,501.2699

HAROLD L EVANS CONSULTING ENGINEER 2331 GUS THOMASSON RD. SUITE 102 DALLAS, TEXAS 75228 PHONE (214) 328-8133			HILLCREST SHORES A. HANNA SURVEY, ABSTRACT NO. 98 CITY OF ROCKWALL, ROCKWALL COUNTY, TEXAS Mahr Development Corporation - Owner 14755 Preston Road, Suite 830 Dallas, Texas 75240 Tel. No. 392-3800		
SCALE	DATE	JOB NO.			
1"=100'	7-13-93	9323			

