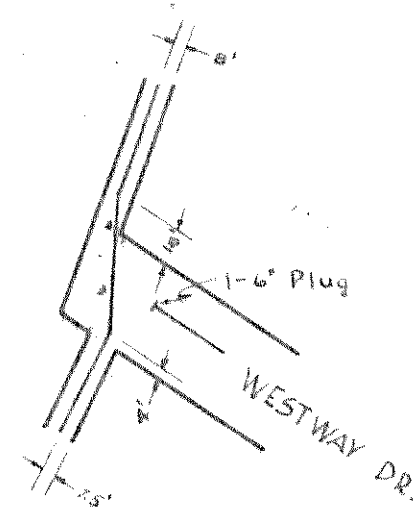
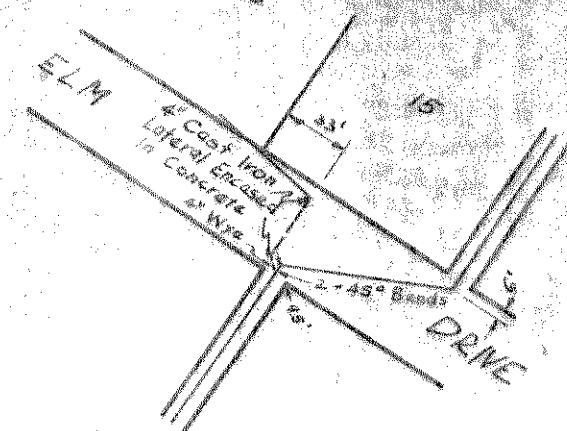


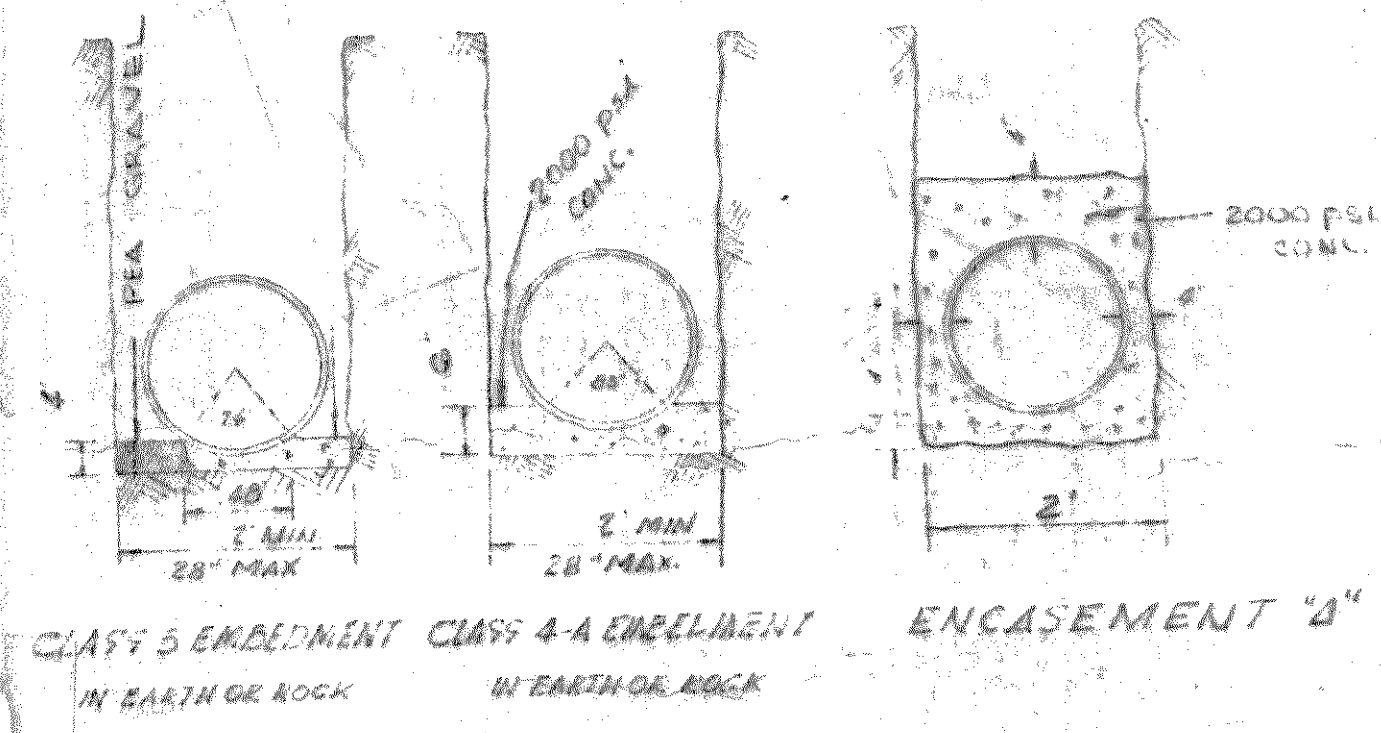
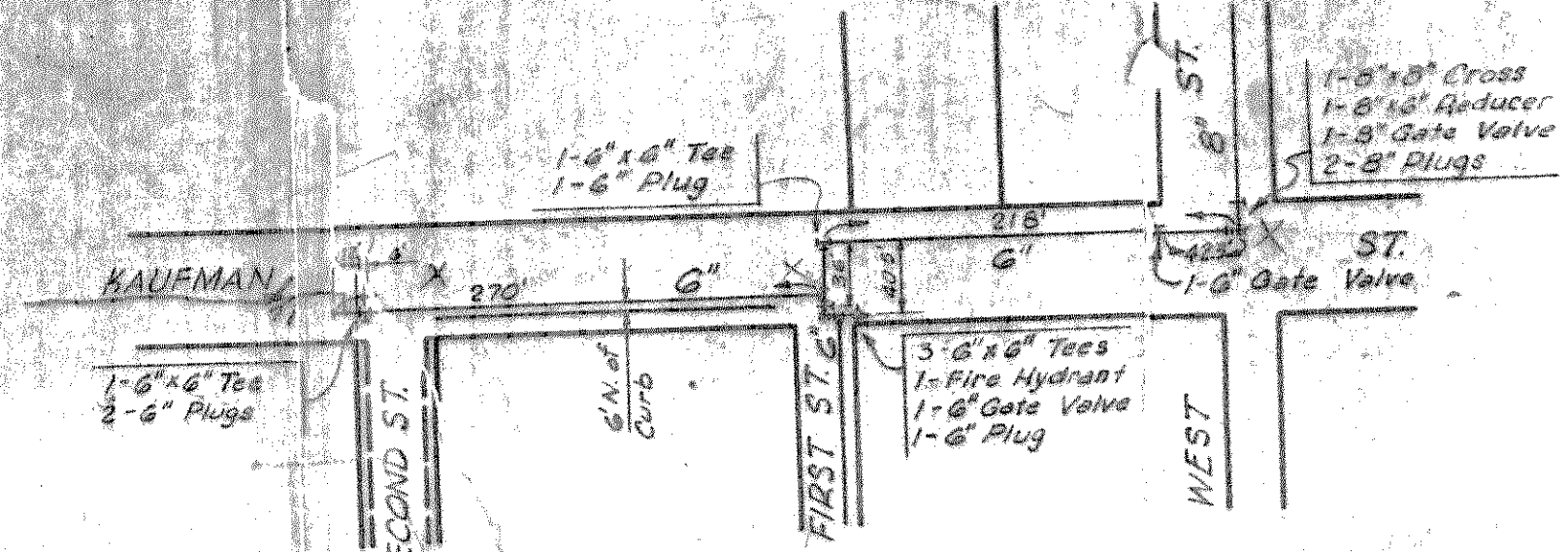
WESTWAY DRIVE DETAIL
Scale: 1"=100'



ELN DRIVE DETAIL
Scale: 1"=100'

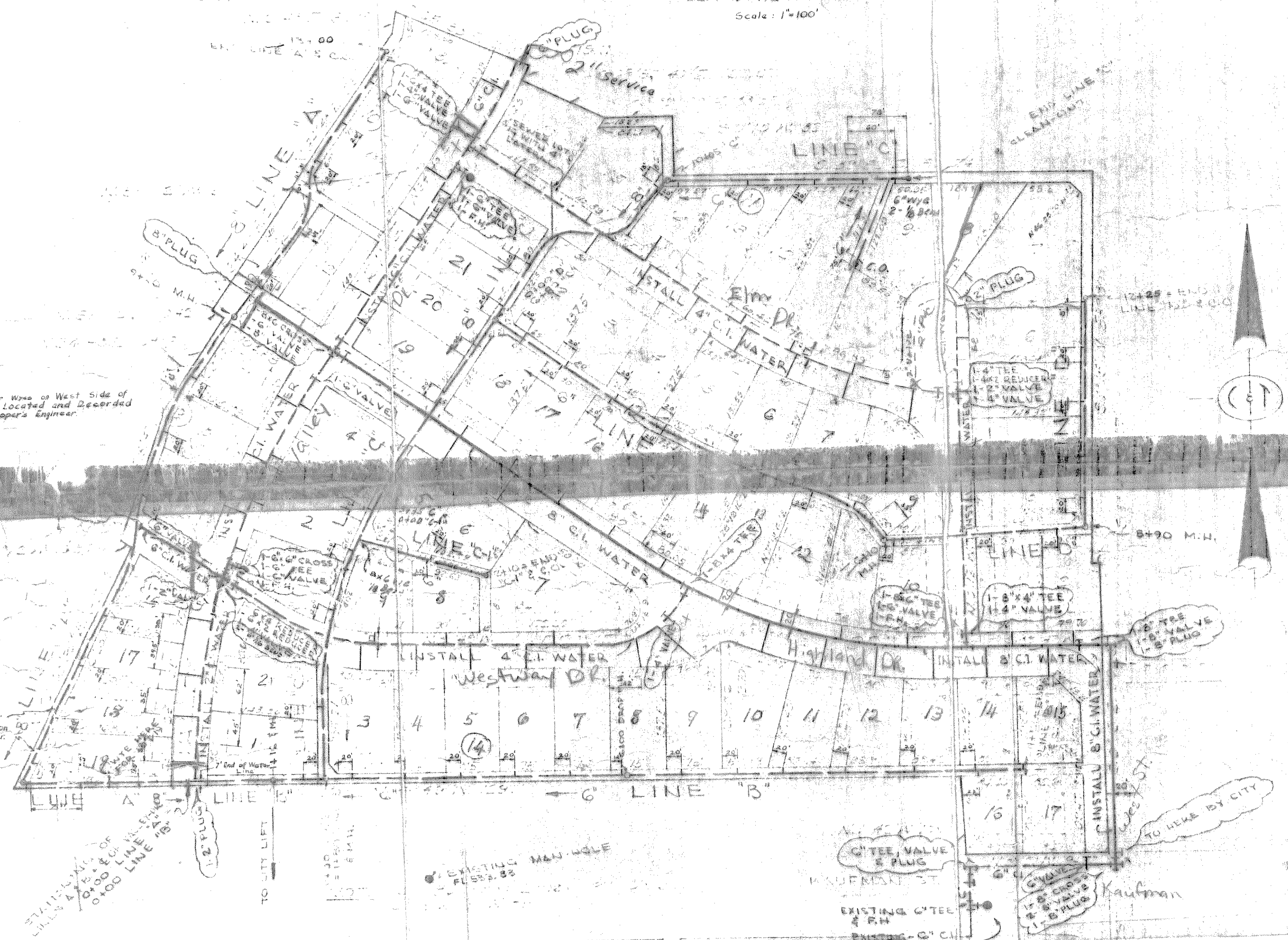


KAUFMAN ST. DETAIL
Scale: 1"=100'



NOTE:
All Sewer Wires on West Side of Line 'A' located and Recorded by Developer's Engineer.

The Wires to These Two Proposed Lots are 20' North of Stated Location by Developer's Engineer.



- WATER**
- One 1/2" copper water lateral (with curb cock & configuration cock) will be installed by contractor to each lot. Lateral will be stacked & buried back of curb at the center of each lot.
 - Cast iron pipe shall be Class 150 & cement lined.
 - All 6" dia. water lines & smaller shall have 42" cover. 8" dia shall have 48" cover (below finished grade).
 - All water service lines are located in the E of each lot, unless dimensioned otherwise.
- SEWER**
- All sewers shall be constructed of vitrified clay pipe.
 - Each lot will have a V.C. manhole at a point 20' east from the low end of the lot. As built plans will verify these locations.
 - Wires will be placed for future lots to the West of Line 'A'.
 - All joints will be hot poured plastic or asphaltic compound.
 - All manholes shall be 4 feet in diameter.
 - All sewer mains were placed on pea gravel, except where plans call for concrete embedment or encasement.

WATER & SANITARY SEWER LAYOUT

Valley - Westway
Highland
Eln

As Built Marc 1956 L.F.F.