

CURVE	RADIUS	LENGTH	TANGENT	CHORD	BEARING	DELTA
C1	100.00'	88.07'	35.41'	66.76'	S46°20'36" E	39°00'00"
C2	100.00'	53.25'	27.27'	52.62'	N42°05'56" W	30°30'39"
C3	813.30'	79.61'	39.84'	79.57'	S54°33'01" E	05°36'29"
C4	100.00'	52.36'	26.79'	51.78'	S59°04'12" E	30°00'00"
C5	80.00'	123.08'	77.45'	111.29'	N88°08'35" W	85°08'48"

1+97.03 LN. C-3
END 18" RCP &
CONST. 3.5'X3.5'
WYE INLET
TOP=542.58
THROAT=541.50
FL=538.08

LINE C-3
PT = 0+52.36

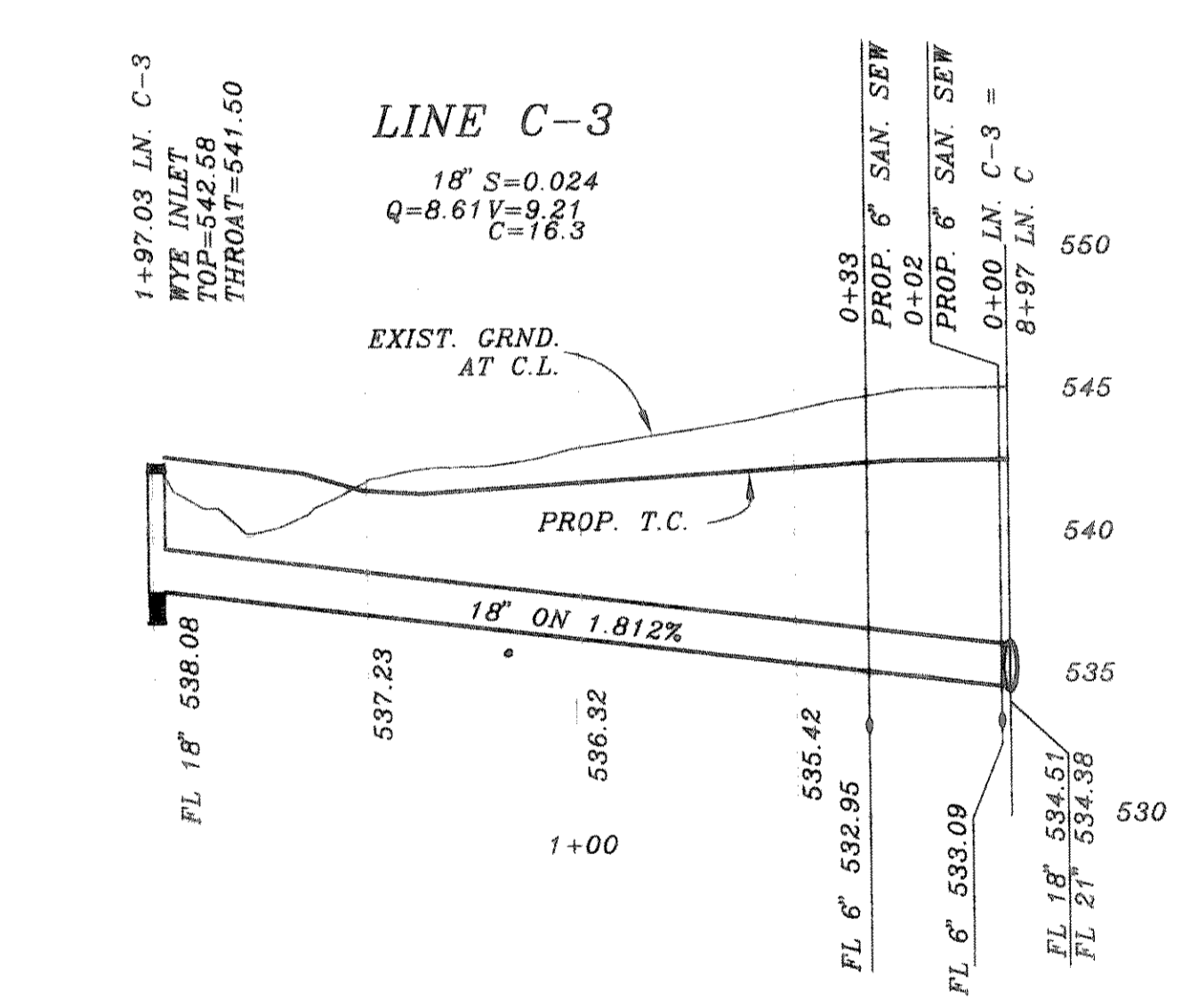
SEE SHT. 16

PAV. STA. 3+20
CL 15" INLET
TC 517.84
FL 513.34
PAV. STA. 0+75
CL 10" INLET
TOP 517.53
FL 513.03

PAV. STA. 0+75
CL 5" INLET
TOP 517.88
FL 513.38

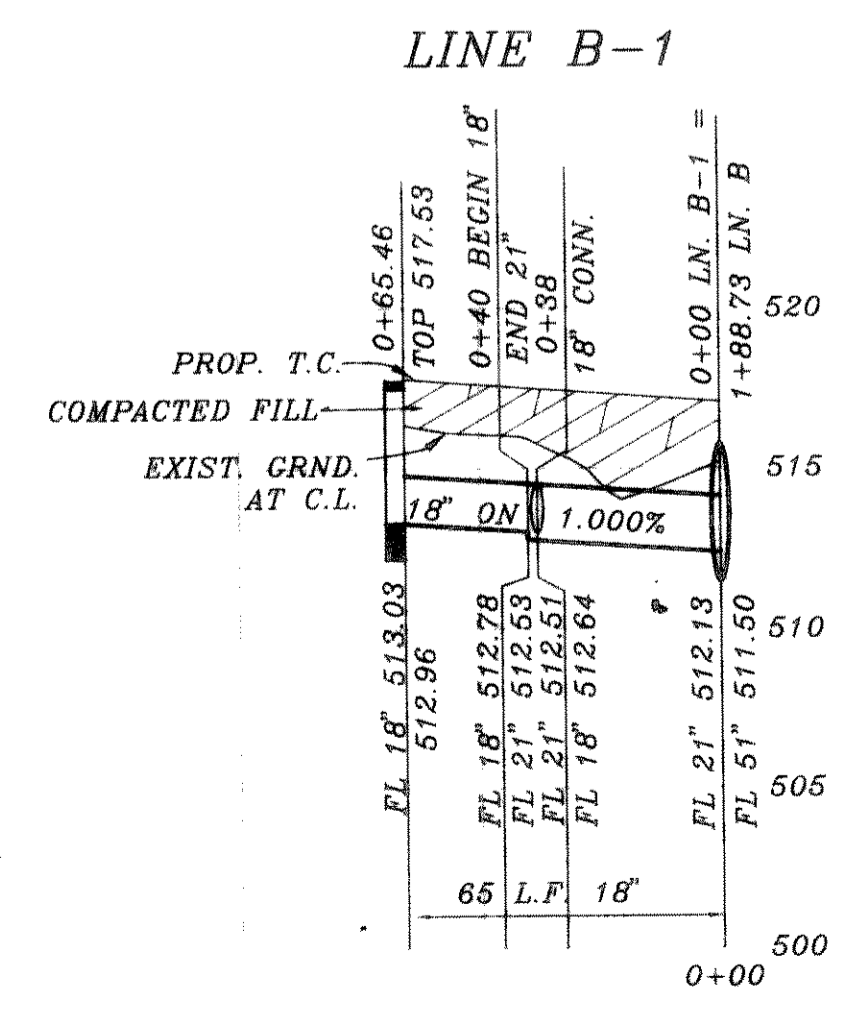
SEE SHT. 22 FOR
GRADING IN THIS AREA

LINE B

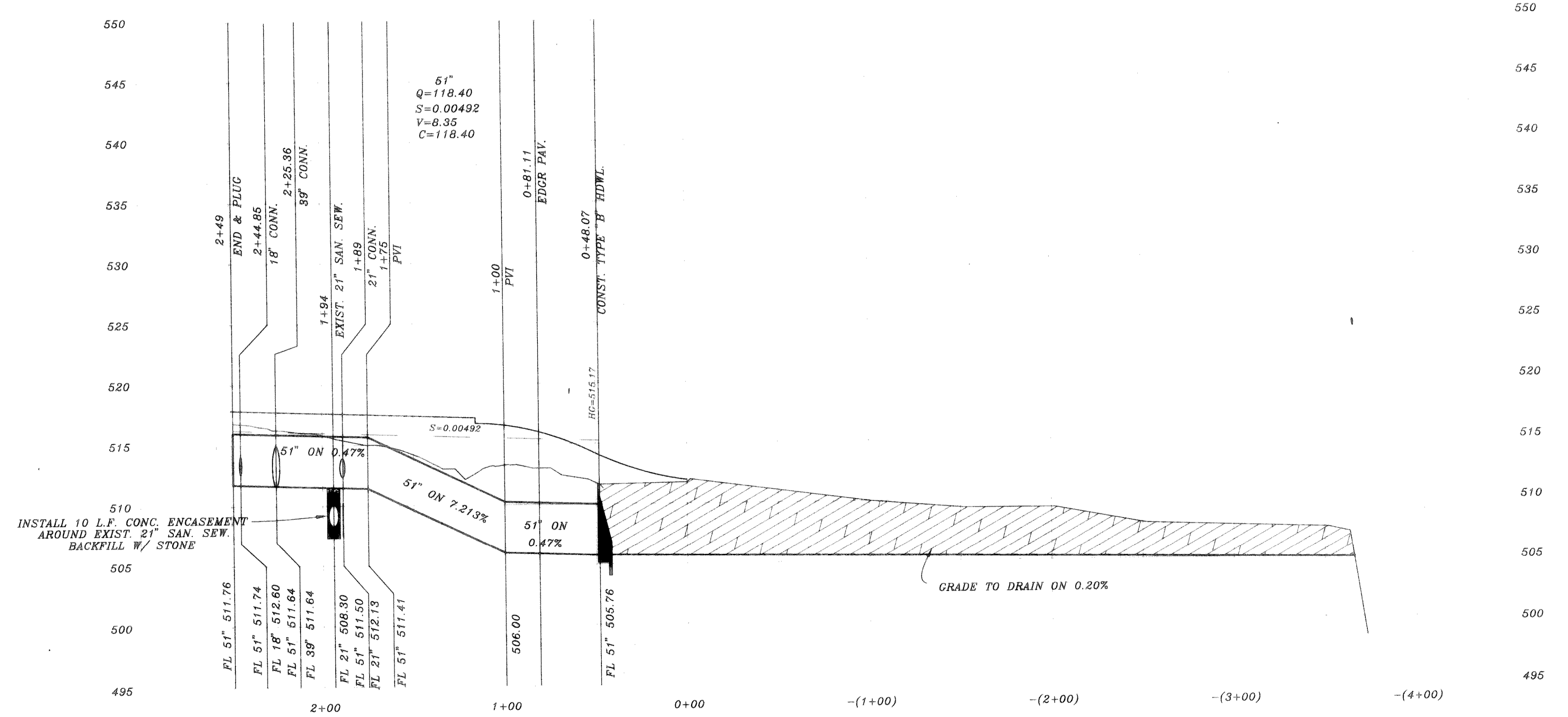


LINE C-3

18" S=0.024
Q=8.61 V=9.21
C=16.3



LINE B-1



INSTALL 10 L.F. CONC. ENCASEMENT
AROUND EXIST. 21" SAN. SEW.
BACKFILL W/ STONE

GRADE TO DRAIN ON 0.20%

B.M.
TOP OF EXIST. SAN. SEW. M.H.
LOCATED AT PAV. STA. -(0+25), 4' LT.
WILDFLOWER WAY
ELEVATION = 515.72
B.M.
TOP OF EXIST. M.H. AT WEST
CORNER OF LOT 20, BLOCK A. OF
HIGHLAND MEADOWS
ELEVATION = 514.85

REV.	DATE	SCALE	DESIGN	DRAWN
REV. LN. B X	2/16/96	1" = 40'	H.L.E.	
REV. PER 3rd. CITY REVIEW	1/26/96	1" = 6'		
REV. PER 2nd. CITY REVIEW	11/9/95			

STORM SEWER
LINE B, B-1, & C-3
HIGHLAND MEADOWS NO. 1
CITY OF ROCKWALL



SHEET NO.	17
JOB NO.	9563