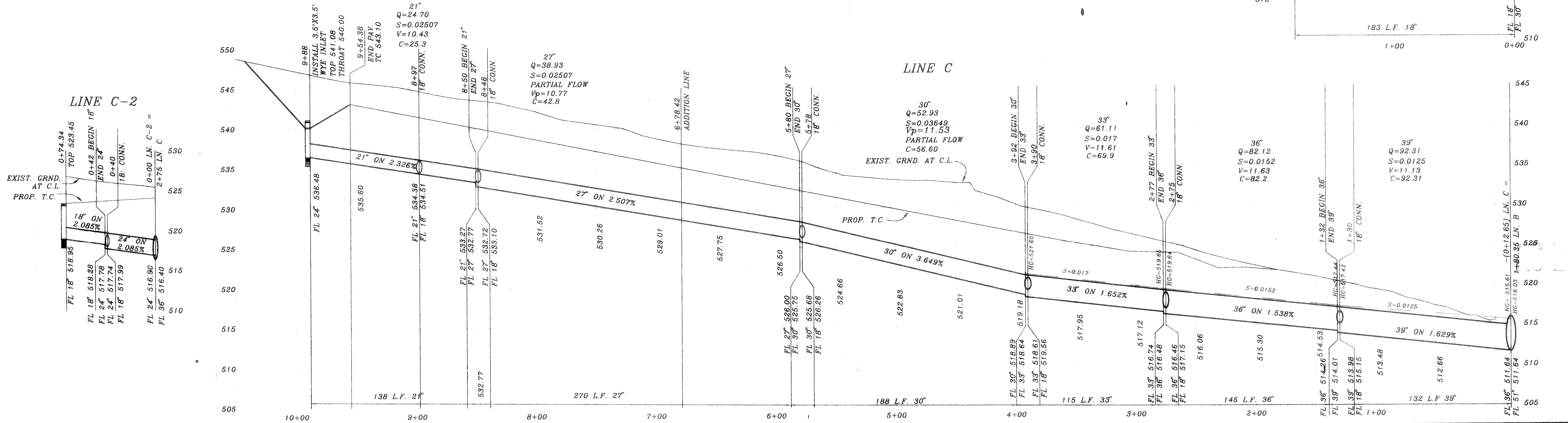
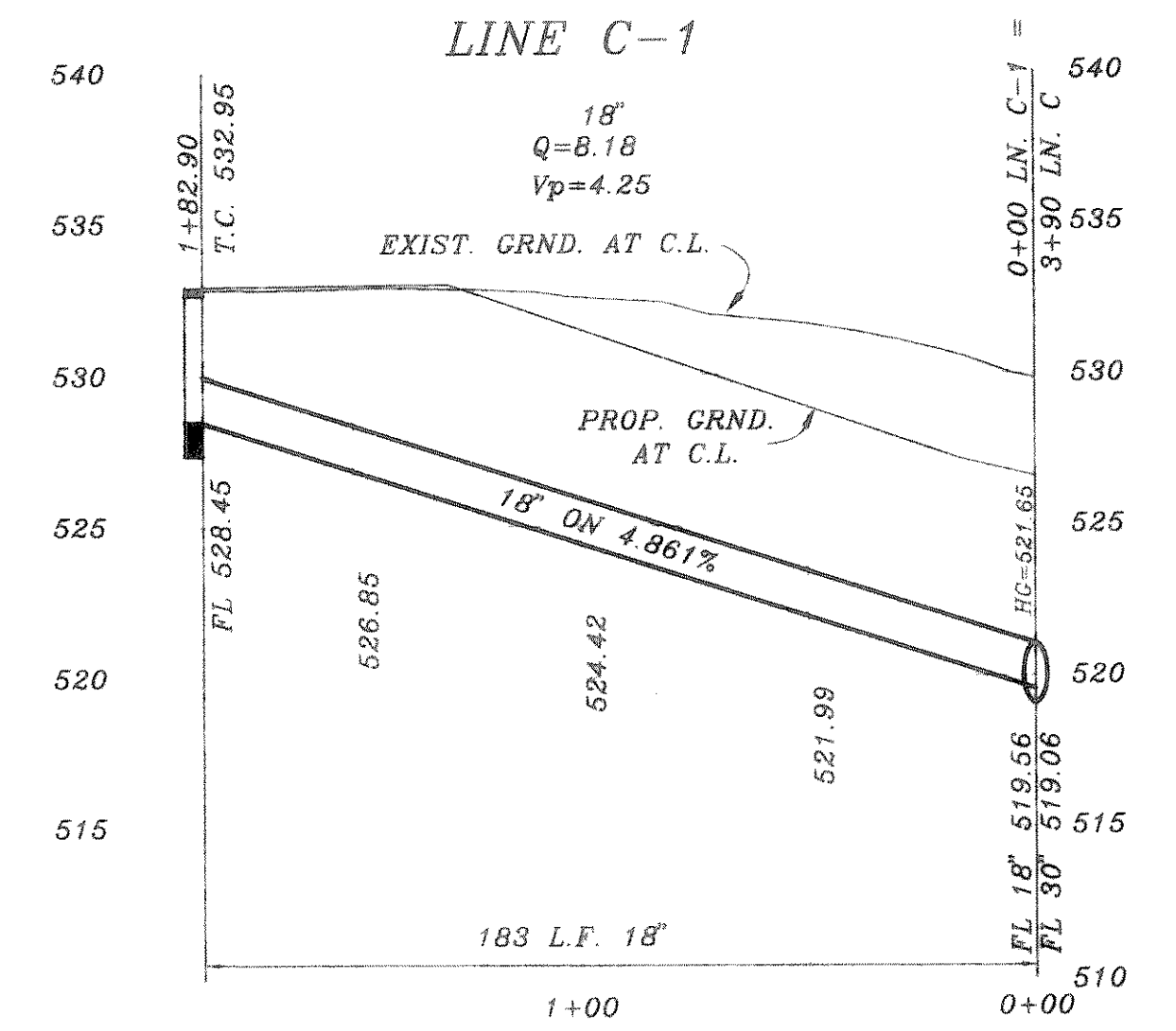
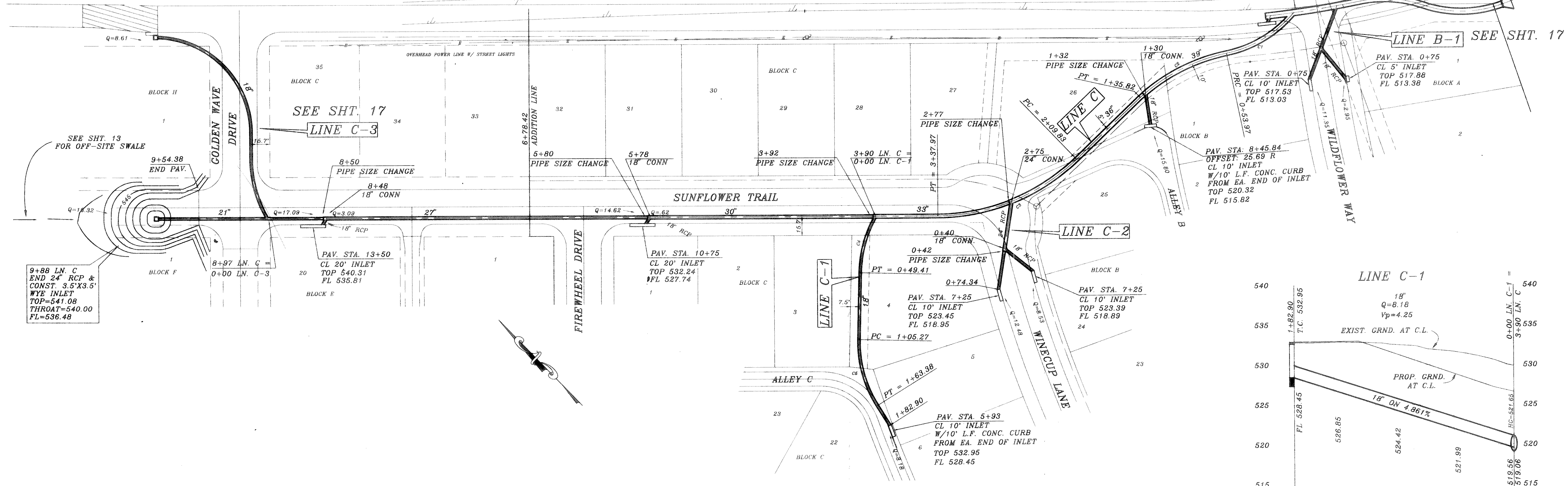


CURVE	RADIUS	LENGTH	TANGENT	CHORD	BEARING	DELTA
C1	100.00'	66.62'	34.60'	65.40'	S76°42'46" E	38°10'18"
C2	155.00'	81.84'	41.90'	80.90'	N72°45'14" W	30°15'13"
C3	167.46'	128.14'	67.39'	125.04'	S67°51'05" E	43°50'34"
C4	100.00'	49.41'	25.22'	48.31'	S59°35'39" W	28°18'33"
C5	100.00'	58.11'	29.90'	57.30'	S28°47'25" W	33°17'44"

MIMS ROAD

SEE SHT. 17
 - (0+12.65) LN. C =
 2+12.93 LN. B



B.M.
 TOP OF EXIST. SAN SEW. M.H.
 LOCATED AT PAV. STA. (0+25), 4' LT.
 WILDFLOWER WAY
 ELEVATION = 515.72

B.M.
 TOP OF EXIST. M.H. AT WEST
 CORNER OF LOT 20, BLOCK A, OF
 HIGHLAND MEADOWS
 ELEVATION = 514.85

REVISION DESCRIPTION	DATE	DESIGN	DRAWN
REV. PER 2nd CITY REVIEW	11/6/95		
REV. LN. C	10/8/95		
REV. PER CITY REVIEW	8/14/95		
	7/20/95	H.L.E.	

HAROLD L. EVANS
 CONSULTING ENGINEER
 P.O. BOX 28355
 2331 GUS THOMASSON ROAD, SUITE 102
 DALLAS, TEXAS 75228, (214) 328-8133

STORM SEWER
LINE C, C-1, & C-2
HIGHLAND MEADOWS NO. 1
CITY OF ROCKWALL

SHEET NO.
 16
 23
 JOB NO.
 9563