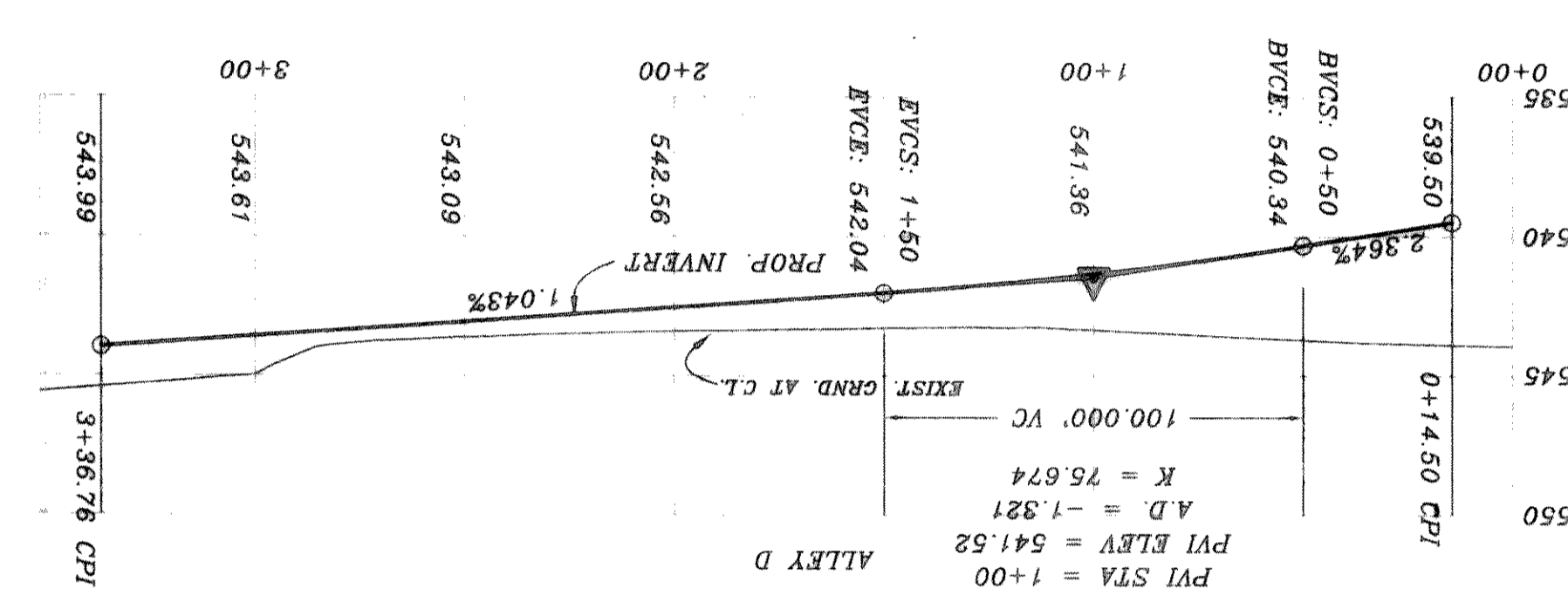
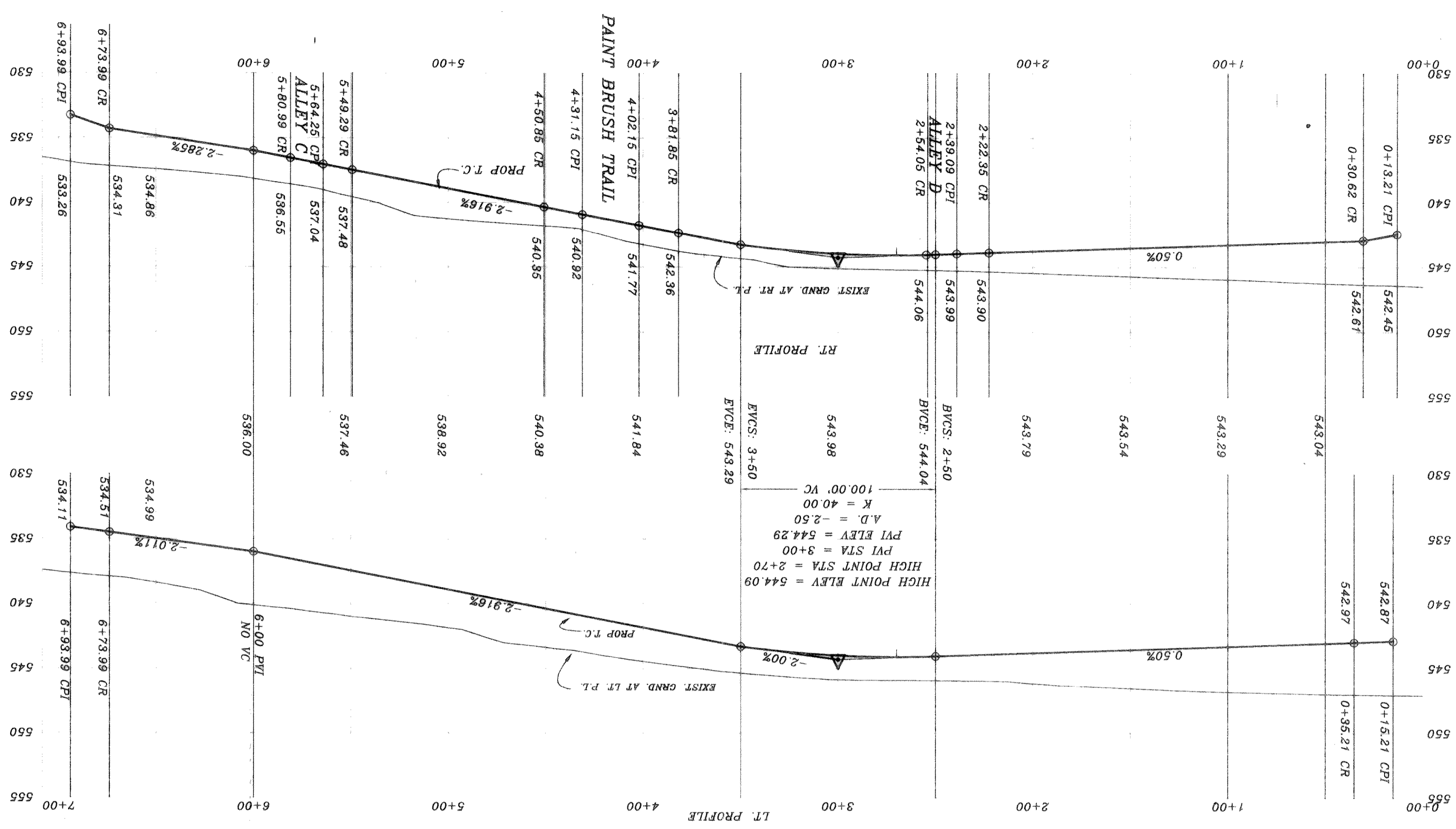


DATE	7/10/95
SCALE	1" = 40'
DESIGN	HAROLD L. EVANS
DRAWN	

REVISION DESCRIPTION	
REV. PER 2ND CITY REVIEW	11/4/95
REV. PER CITY REVIEW	8/14/95

TOP OF EXIST. SAN. SW. M.H. AT WEST
 WILDFLOWER WAY
 LOCATED AT P.V. STA. (-0+25), 4' LT.
 B.M.
 ELEVATION = 515.72

TOP OF EXIST. M.H. AT WEST
 HIGHLAND MEADOWS
 CORNER OF LOT 20, BLOCK A, OF
 B.M.
 ELEVATION = 514.85



CURVE	RADIUS	LENGTH	TANGENT	CHORD	BEARING	DELTA
C1	175.00'	59.45'	30.01'	59.16'	N34°20'19"E	182°47'
C2	175.00'	59.45'	30.01'	59.16'	S34°20'19"W	182°47'
C3	175.00'	59.45'	30.01'	59.16'	S33°48'05"W	182°48'
C4	175.00'	59.45'	30.01'	59.16'	N55°48'05"E	182°48'
C5	46.00'	28.89'	14.86'	28.40'	N25°50'24"E	36°47'18"
C6	46.00'	28.89'	14.86'	28.40'	N1°55'04"W	60°01'36"
C7	1304.210'	151.365'	75.788'	151.280'	S10°46'14"W	06°38'53"

