

**PROPOSED PAVING**  
**PRIMROSE LANE**  
**HIGHLAND MEADOWS NO. 1**  
**CITY OF ROCKWALL**

JOB NO. 9563  
 SHEET NO. 23

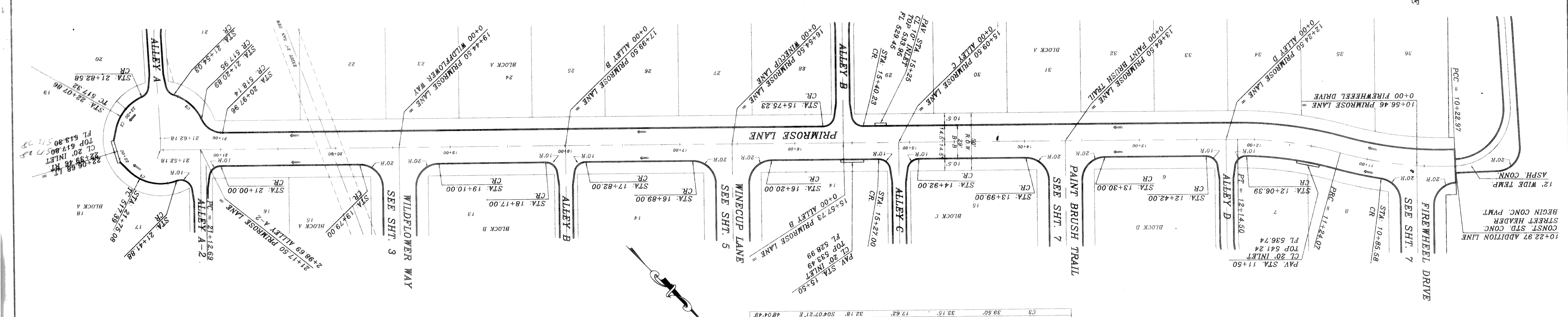
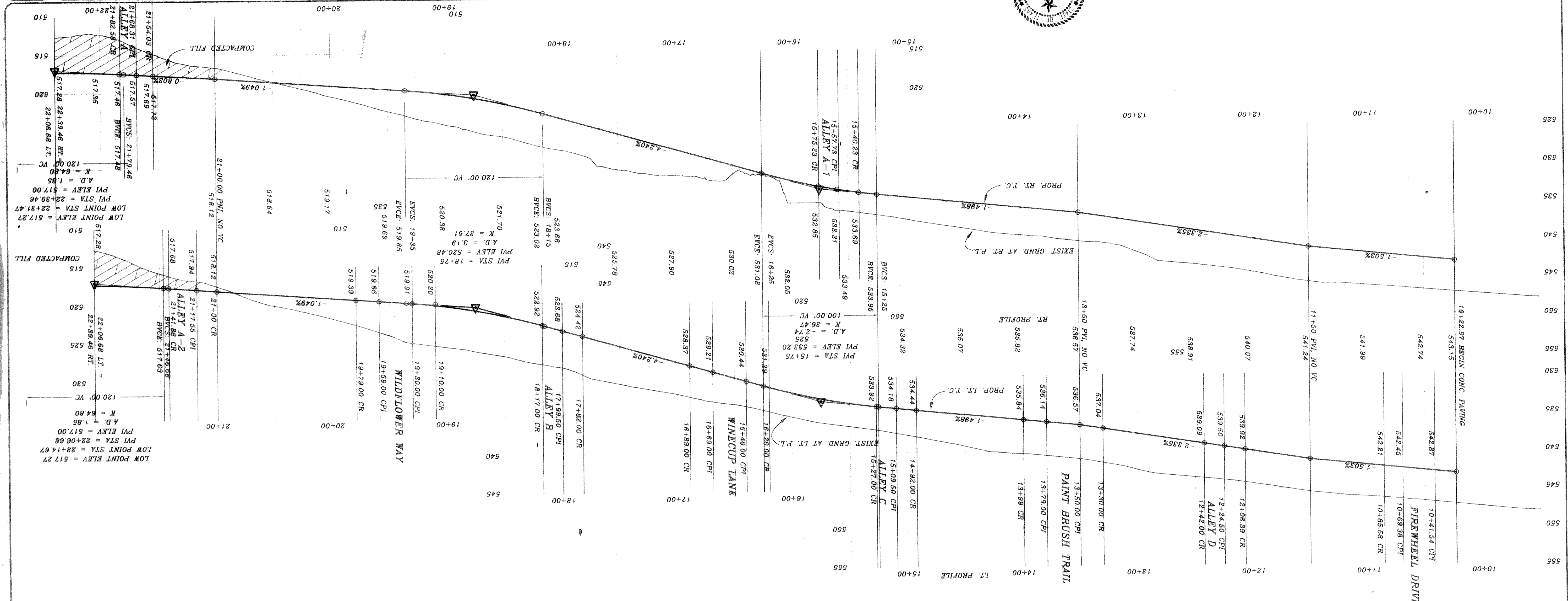
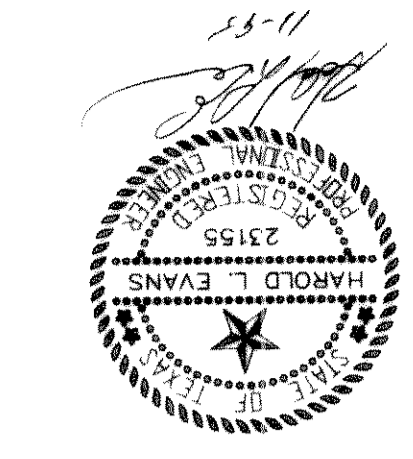
HAROLD L. EVANS  
 CONSULTING ENGINEER  
 P.O. BOX 28955  
 2331 GUS THOMAS ROAD SUITE 102  
 DALLAS, TEXAS 75228 (214) 328-8133

DATE: 11/4/96  
 SCALE: 1" = 40'  
 H.L.E.: 7/10/96

REVISION DESCRIPTION

REV. PER 2ND CITY REVIEW: 11/4/96  
 REV. PER CITY REVIEW: 8/14/96

B.M. TOP OF EXIST. SAN. SEW. M.H. LOCATED AT PAV. STA. (0+25), 4' LT. ELEVATION = 514.85  
 WILDFLOWER WAY  
 B.M. TOP OF EXIST. M.H. AT WEST CORNER OF LOT 22, BLOCK A OF HIGHLAND MEADOWS ELEVATION = 514.85



CURVE	RADIUS	LENGTH	TANGENT	CHORD	BEARING	DELTA
C3	39.50'	33.15'	17.62'	32.18'	S04°07'21"E	48°04'49"
C2	39.50'	56.88'	34.84'	62.09'	N68°10'36"E	82°30'23"
C1	39.50'	64.80'	42.36'	62.78'	N104°38'W	94°00'04"