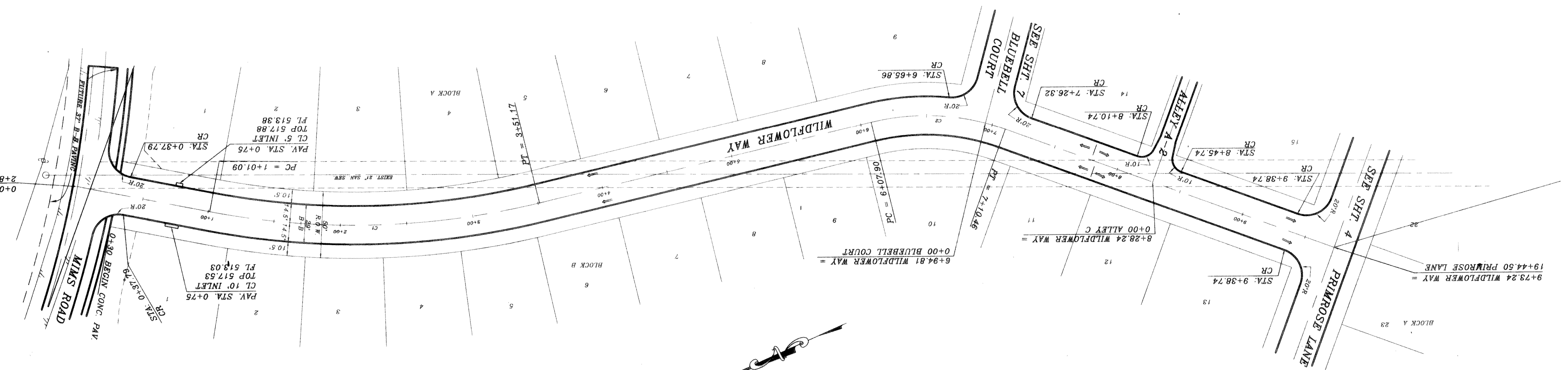
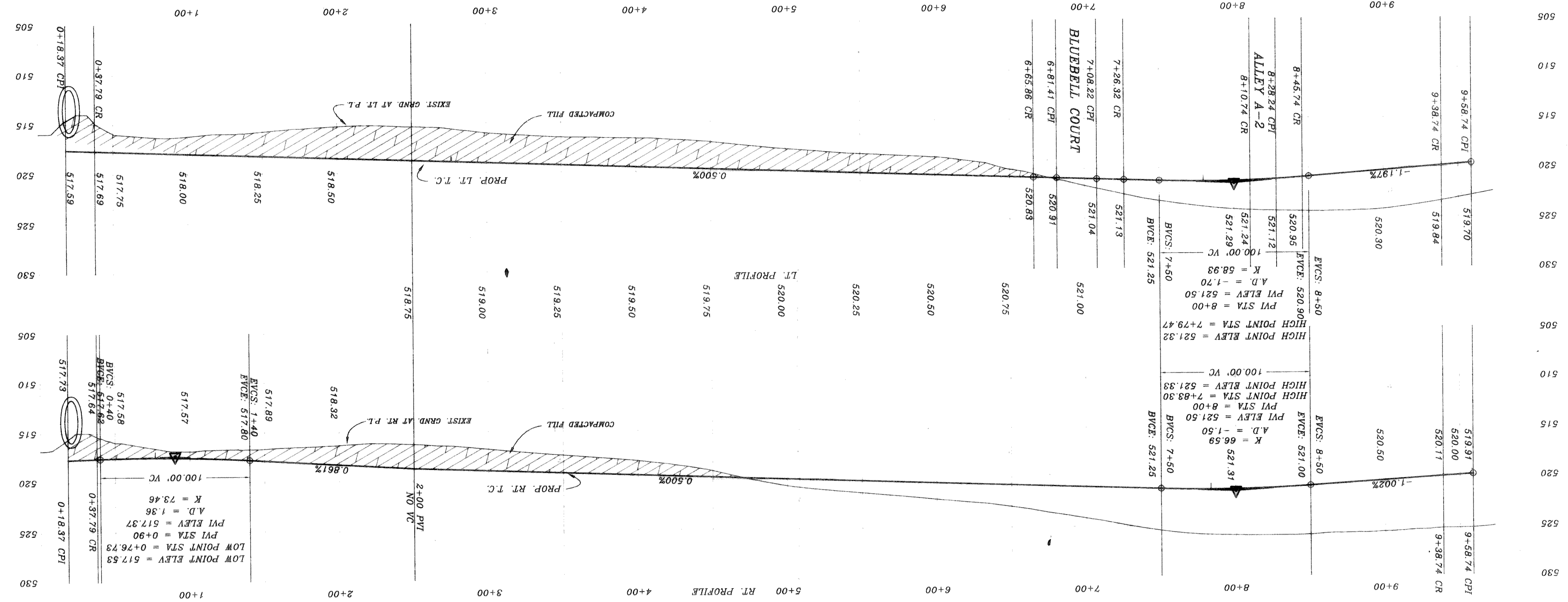
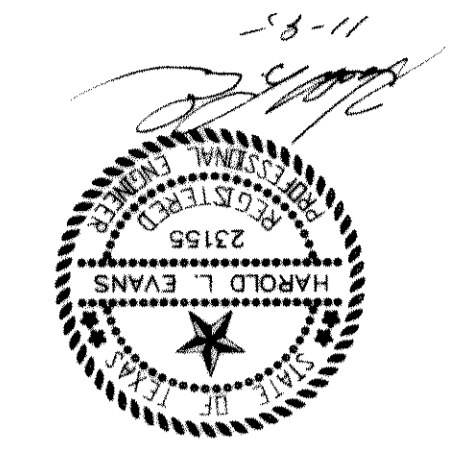


SHEET NO. 3	PROPOSED PAVING WILDFLOWER WAY	HAROLD L. EVANS CONSULTING ENGINEER P.O. BOX 28355 2331 GUS THOMASSON ROAD, SUITE 102 DALLAS, TEXAS 75228 (214) 328-8133	DATE	SCALE	DESIGN	DRAWN
			11/8/95	1" = 40'		
JOB NO. 9563	HIGHLAND MEADOWS NO.1 CITY OF ROCKWALL	REVISION DESCRIPTION	DATE	SCALE	H.L.E.	
		REV. PER 2ND CITY REVIEW	7/10/96	1" = 40'		

B.M.
TOP OF EXIST. SAN. S.W. M.H.
WILDFLOWER WAY STA. - (0+25), 4' LT.
ELEVATION = 615.72
CORNER OF LOT 20, BLOCK A, OF
HIGHLAND MEADOWS
ELEVATION = 614.85



CURVE	RADIUS	LENGTH	TANGENT	CHORD	BEARING	DELTA
C2	175.00'	102.66'	101.10'	102.66'	128.89°	33.94° 44'
C1	284.21'	250.00'	248.18'	252.50'	128.89°	24.81° 36'



11-8-11
HAROLD L. EVANS
CONSULTING ENGINEER
P.O. BOX 28355
2331 GUS THOMASSON ROAD, SUITE 102
DALLAS, TEXAS 75228 (214) 328-8133