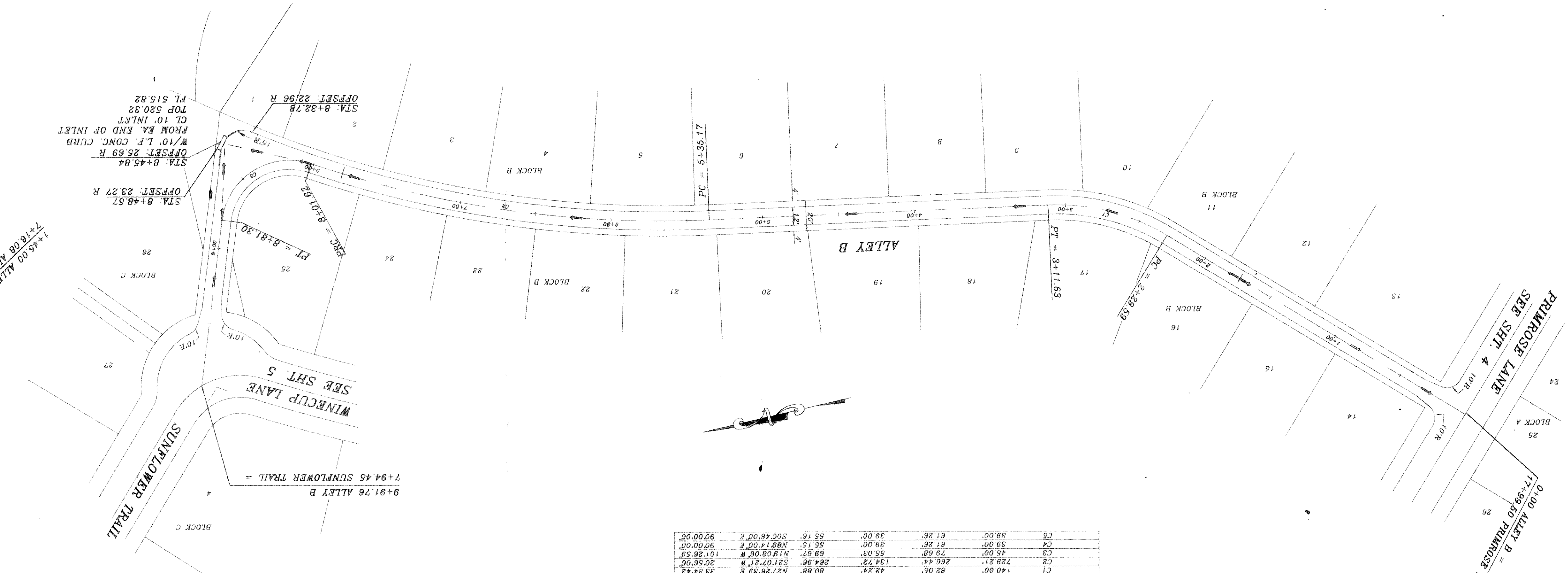
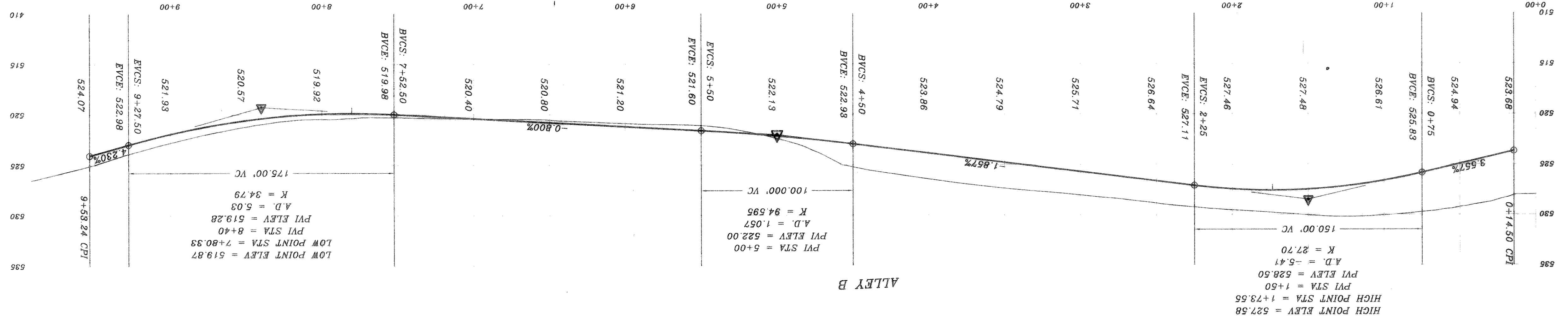
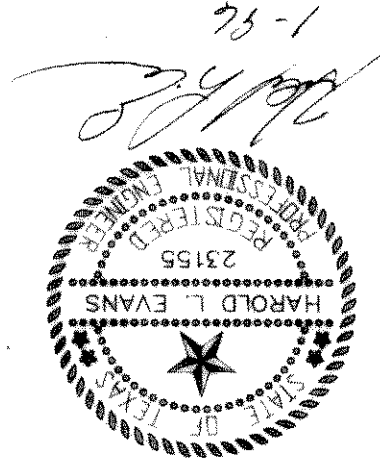


SHEET NO. 11	JOB NO. 9663	CITY OF ROCKWALL HIGHLAND MEADOWS NO. 1	DATE 7/10/96	REVISION DESCRIPTION
				REV ALLEY A-1 REV PER 2ND CITY REVIEW 11/2/96
SHEET NO. 23	JOB NO. 9663	CITY OF ROCKWALL HIGHLAND MEADOWS NO. 1	SCALE 1" = 40'	DATE 8/14/96
			SCALE 1" = 40'	DATE 11/2/96
PROPOSED PAVING ALLEY B & A-1		CONSULTING ENGINEER HAROLD L. EVANS 2331 GUS THOMASSON ROAD, SUITE 102 DALLAS, TEXAS 75228 (214) 328-8133	DRAWN H.L.E.	

B.M.
TOP OF EXIST SAN SEW M.H.
LOCATED AT PAV. STA. - (0+25), 4' LT.
WILDFLOWER WAY
ELEVATION = 515.72

B.M.
TOP OF EXIST M.H. AT WEST
CORNER OF LOT 20, BLOCK A, OF
HIGHLAND MEADOWS
ELEVATION = 514.85



CURVE	RADIUS	LENGTH	TANGENT	CHORD	BEARING	DELTA
C1	140.00'	42.24'	82.05'	80.88'	N72°26'38"E	33°44'42"
C2	729.21'	266.44'	134.72'	264.96'	S21°07'51"W	20°56'06"
C3	45.00'	75.00'	55.00'	55.00'	N15°00'00"W	101°26'52"
C4	39.00'	61.26'	39.00'	55.15'	N88°14'00"E	90°00'00"
C5	39.00'	61.26'	39.00'	55.15'	S00°46'00"E	90°00'00"

