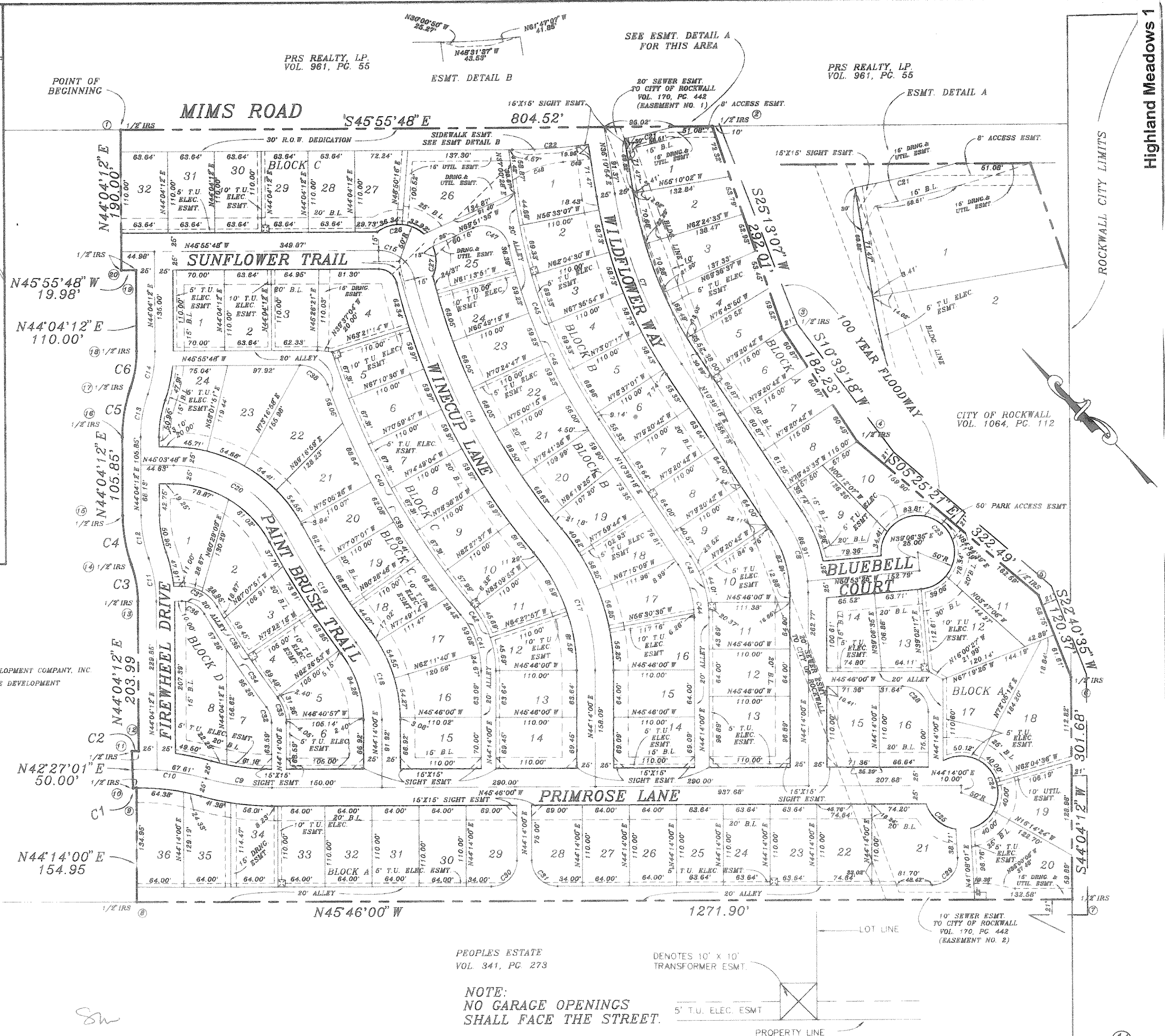


**SURFACE ADJUSTED COORDINATES**

Point	Northing	Easting
1	7016565.1490	2597105.7741
2	7016005.5751	2597683.8131
3	7015741.3934	2597559.3945
4	7015562.3086	2597525.7019
5	7015241.2614	2597556.1763
6	7015130.1998	2597509.7722
7	7014913.4426	2597299.9392
8	7015800.6932	2596388.6195
9	7015911.7188	2596496.7128
10	7015914.8545	2596493.3257
11	7015951.8056	2596527.0098
12	7015945.5075	2596533.7386
13	7016092.0694	2596675.6187
14	7016133.9409	2596704.2229
15	7016189.7703	2596742.3624
16	7016265.8247	2596815.9873
17	7016305.7554	2596870.5489
18	7016335.7040	2596911.4705
19	7016414.7373	2596987.9792
20	7016428.6359	2596973.6219

CURVE	RADIUS	LENGTH	TANGENT	CHORD	BEARING	DELTA
C1	300.00'	4.62'	2.31'	4.62'	N47°12'26"W	0°52'54"
C2	350.00'	9.22'	4.61'	9.22'	S46°53'37"E	01°30'32"
C3	150.00'	50.95'	25.72'	50.71'	N34°20'19"E	19°27'47"
C4	200.00'	67.94'	34.30'	67.61'	N34°20'19"E	19°27'47"
C5	200.00'	67.94'	34.30'	67.61'	N53°48'05"E	19°27'48"
C6	150.00'	50.95'	25.73'	50.71'	N53°48'05"E	19°27'48"
C7	584.21'	250.08'	126.99'	248.18'	N22°55'08"E	24°31'36"
C8	175.00'	102.56'	52.80'	101.10'	N27°26'39"E	33°34'44"
C9	325.00'	90.43'	45.51'	90.14'	N37°47'44"W	15°56'33"
C10	325.00'	101.10'	50.96'	100.69'	N38°44'10"W	17°49'26"
C11	175.00'	59.45'	30.01'	59.16'	N34°20'19"E	19°27'47"
C12	175.00'	59.45'	30.01'	59.16'	N34°20'19"E	19°27'47"
C13	175.00'	59.45'	30.01'	59.16'	N53°48'05"E	19°27'48"
C14	175.00'	59.45'	30.01'	59.16'	N53°48'05"E	19°27'48"
C15	50.00'	66.80'	39.45'	61.94'	N07°39'23"W	76°32'57"
C16	874.21'	402.36'	204.81'	398.82'	N17°25'58"E	26°22'15"
C17	275.00'	191.92'	100.05'	188.05'	N24°14'28"E	39°59'09"
C18	175.00'	112.80'	58.44'	110.85'	N25°46'07"E	36°55'48"
C19	1164.21'	176.87'	88.61'	176.70'	N11°39'21"E	08°42'16"
C20	175.00'	186.53'	103.23'	177.83'	N14°31'39"W	61°04'17"
C21	830.00'	70.07'	35.06'	70.05'	N58°57'47"W	04°50'14"
C22	830.00'	103.76'	51.95'	103.69'	N49°30'40"W	07°09'45"
C23	50.00'	235.62'	50.00'	70.71'	N05°53'25"W	27°00'00"
C24	50.00'	170.12'	381.23'	99.15'	N22°07'29"E	194°56'38"
C25	50.00'	55.94'	31.31'	53.07'	N05°16'37"W	64°06'19"
C26	50.00'	36.34'	19.01'	35.54'	N61°58'52"W	41°38'15"
C27	50.00'	42.01'	22.34'	40.79'	N44°12'43"E	48°08'36"
C28	35.00'	54.98'	35.00'	49.50'	N00°46'00"W	90°00'00"
C29	35.00'	56.87'	36.95'	50.82'	N87°41'01"E	95°06'01"
C30	35.00'	54.98'	35.00'	49.50'	N89°14'00"E	90°00'00"
C31	35.00'	54.98'	35.00'	49.50'	N00°46'00"W	90°00'00"
C32	35.00'	22.47'	11.64'	22.09'	N25°50'22"E	36°47'16"
C33	55.00'	35.31'	18.29'	34.71'	N25°50'22"E	36°47'16"
C34	1314.21'	152.53'	76.35'	152.44'	N10°46'14"E	06°38'59"



CURVE	RADIUS	LENGTH	TANGENT	CHORD	BEARING	DELTA
C35	1294.21'	150.20'	75.19'	150.12'	N10°46'14"E	06°38'59"
C36	35.00'	36.67'	20.22'	35.01'	N15°55'02"W	60°01'31"
C37	55.00'	57.62'	31.77'	55.02'	N15°55'02"W	60°01'31"
C38	40.00'	49.10'	28.18'	46.07'	N10°46'04"W	70°19'28"
C39	1029.21'	361.90'	182.84'	360.04'	N14°19'15"E	20°08'49"
C40	1009.21'	394.53'	199.82'	392.02'	N15°26'49"E	22°23'55"
C41	120.00'	83.75'	43.66'	82.06'	N24°14'25"E	39°59'09"
C42	140.00'	97.70'	50.94'	95.73'	N24°14'25"E	39°59'09"
C43	150.00'	87.91'	45.26'	86.66'	N27°26'39"E	33°34'42"
C44	130.00'	76.19'	39.22'	75.10'	N27°26'39"E	33°34'43"
C45	719.21'	330.80'	168.38'	327.89'	N23°49'53"E	26°21'10"
C46	739.21'	270.10'	136.57'	268.60'	N21°07'21"E	20°56'06"
C47	35.00'	61.97'	42.80'	54.19'	N19°08'06"W	101°26'59"
C48	145.00'	73.64'	37.63'	72.85'	N65°09'28"W	29°05'54"
C49	850.00'	37.46'	18.73'	37.46'	N51°52'16"W	02°31'31"

100 LOTS  
25.971 ACRES

**HAROLD L. EVANS**  
CONSULTING ENGINEER  
P.O. BOX 28355  
2331 CUS THOMASSON ROAD, SUITE 102  
DALLAS, TEXAS 75228, (214) 328-8133

SCALE: 1" = 100'  
DATE: 7/4/95  
JOB No.: 9663

**HIGHLAND MEADOWS NO. 1**

E.P. GAINES CHISUM SURVEY, ABSTRACT NO. 64

CITY OF ROCKWALL, ROCKWALL COUNTY, TEXAS

MASTERPLAN DEVELOPMENT COMPANY, INC.  
810 SANTA FE TRAIL, IRVING, TEXAS 75063 (214) 506-0648

Highland Meadows 1