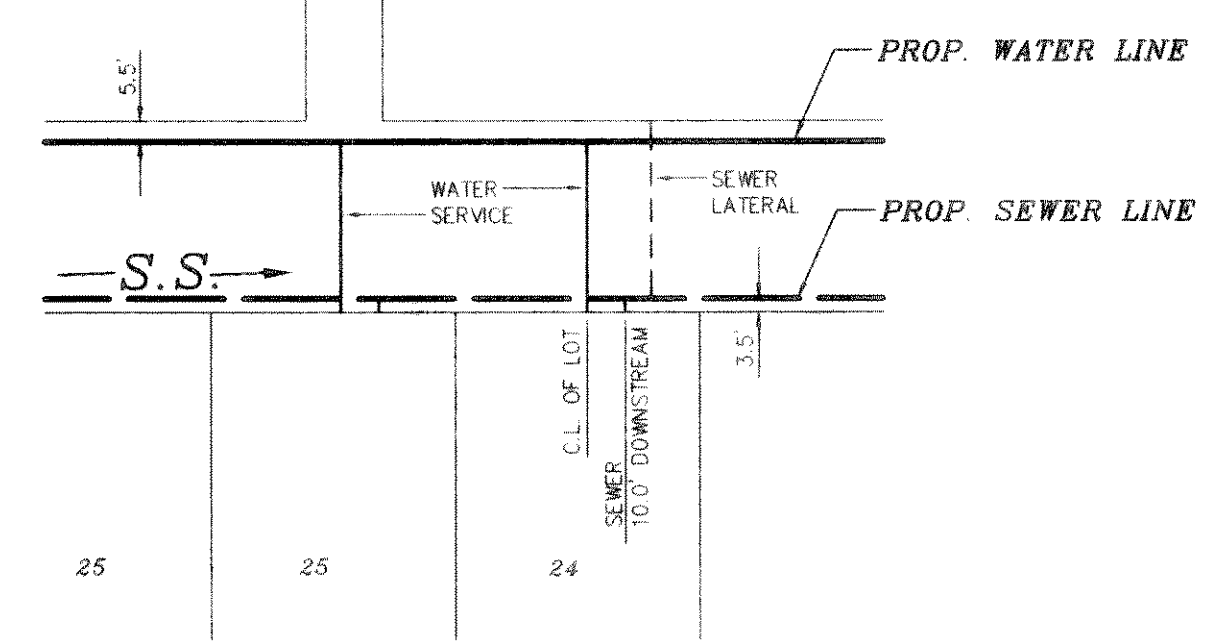
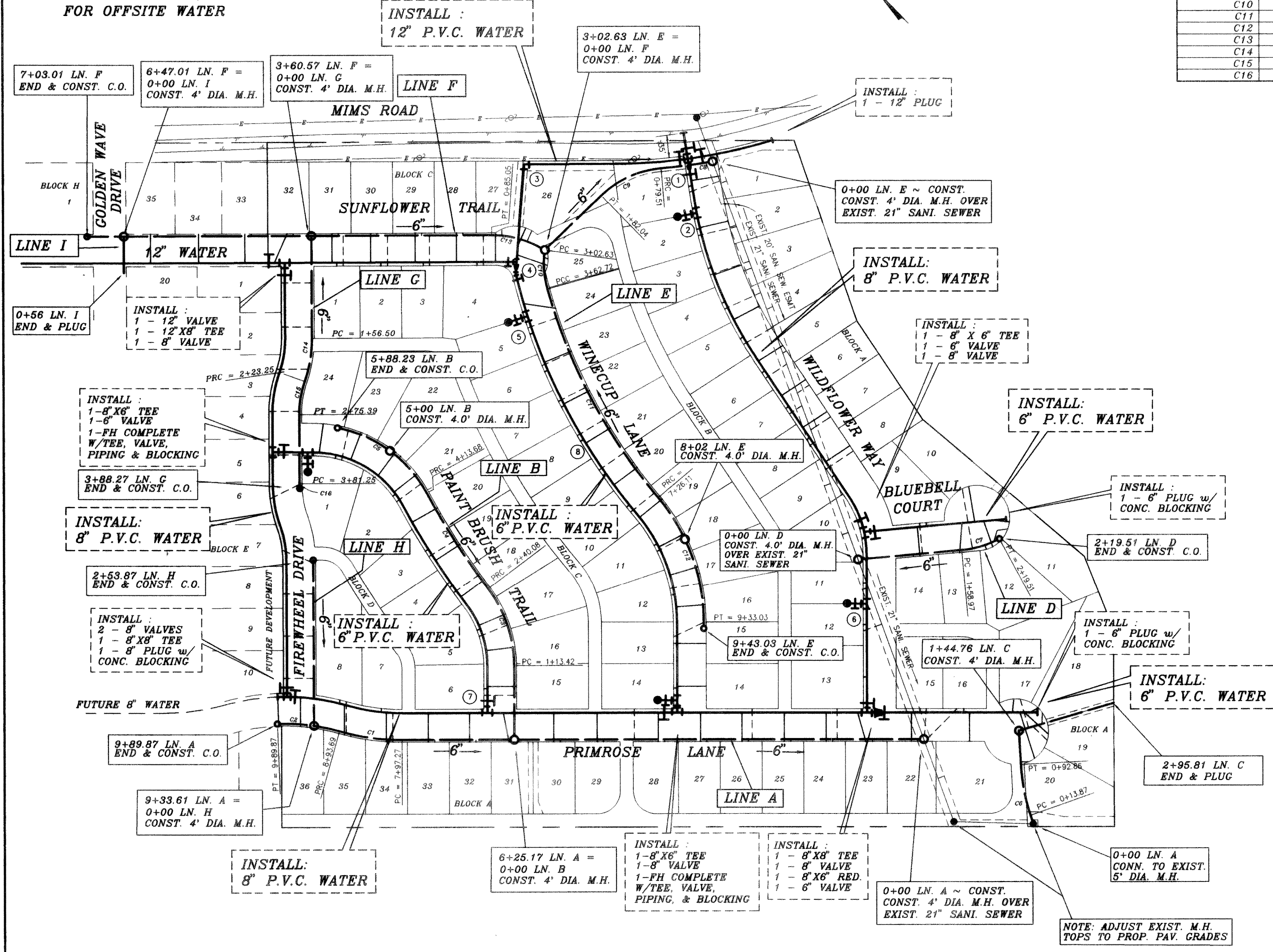


NOTE: SEE SHT. 19
FOR OFFSITE WATER

CURVE	RADIUS	LENGTH	TANGENT	CHORD	BEARING	DELTA
C1	346.50'	96.41'	48.52'	96.10'	S37°47'44" E	15°56'33"
C2	303.50'	96.18'	48.50'	95.78'	N38°54'12" W	18°09'28"
C3	196.50'	126.65'	65.61'	124.47'	N25°46'06" E	36°55'47"
C4	1142.71'	173.60'	86.97'	173.44'	S11°39'21" W	08°42'16"
C5	196.50'	174.55'	93.50'	168.86'	N09°26'20" W	50°53'40"
C6	300.00'	79.00'	39.73'	78.77'	S33°35'24" W	15°05'13"
C7	150.00'	60.54'	30.69'	60.13'	S62°27'09" E	23°07'27"
C8	845.00'	79.51'	39.78'	79.48'	S53°18'14" E	05°23'27"
C9	150.00'	102.53'	53.36'	100.55'	N7°11'26" W	39°09'51"
C10	150.00'	60.09'	30.45'	59.69'	S40°08'26" W	22°57'05"
C11	852.71'	363.40'	184.50'	360.65'	S16°27'22" W	24°25'03"
C12	296.50'	206.92'	107.88'	202.75'	N24°14'25" E	39°59'09"
C13	150.00'	85.05'	43.70'	83.91'	N29°41'13" W	32°29'10"
C14	196.50'	66.75'	33.70'	66.43'	N53°48'06" E	19°27'47"
C15	153.50'	52.14'	26.33'	51.89'	S53°48'06" W	19°27'47"
C16	153.50'	7.03'	3.51'	7.03'	S42°45'31" W	02°37'24"



TYPICAL WATER & SEWER SERVICE DETAIL
SCALE: 1" = 50'

WATER LINE INSTALLATION NOTES

- 1. INSTALL:
1 - 12" X 12" CROSS
1 - 12" X 8" REDUCER
3 - 12" VALVE
1 - 8" VALVE
1 - 12" PLUG
- 2. INSTALL:
1 - FH COMPLETE
W/TEE, VALVE,
PIPING & BLOCKING
- 3. INSTALL:
1 - 12" 90° BEND
w/CONC. BLOCKING
- 4. INSTALL:
1 - 12" X 12" TEE
1 - 12" VALVE
1 - 12" X 6" RED.
1 - 6" 22 1/2° BEND
w/CONC. BLOCKING
1 - 6" VALVE

SANITARY SEWER NOTES

- 5. INSTALL:
1 - FH COMPLETE
W/TEE, VALVE,
PIPING & BLOCKING
- 6. INSTALL:
1 - FH COMPLETE
W/TEE, VALVE,
PIPING & BLOCKING
- 7. INSTALL:
1 - 8" X 6" TEE
1 - 6" VALVE
- 8. INSTALL:
6" P.V.C. WATER

B.M.
TOP OF EXIST. SAN. SEW. M.H.
LOCATED AT PAV. STA. -(0+25), 4' LT.
WILDFLOWER WAY
ELEVATION = 516.72

B.M.
TOP OF EXIST. M.H. AT WEST
CORNER OF LOT 20, BLOCK A, OF
HIGHLAND MEADOWS
ELEVATION = 514.85

REVISION DESCRIPTION	DATE	SCALE	DESIGN	DRAWN
ADDED LN. C	1/25/96	1" = 100'	H.L.E.	
REV. PER 3rd CITY REVIEW	11/16/95			
REV. PER 2nd CITY REVIEW	11/7/95			
REV. 10" WAT. TO 12" WAT., ADDED LN. I	10/15/95			
REV. PER CITY REVIEW	8/14/95			

HAROLD L. EVANS
CONSULTING ENGINEER
P.O. BOX 28355
2331 GUS THOMASSON ROAD, SUITE 102
DALLAS, TEXAS 75228 (214) 328-8133

WATER AND SANITARY SEWER PLAN

HIGHLAND MEADOWS NO. 1

CITY OF ROCKWALL

SHEET NO.
20

JOB NO.
9563

AS BUILT

