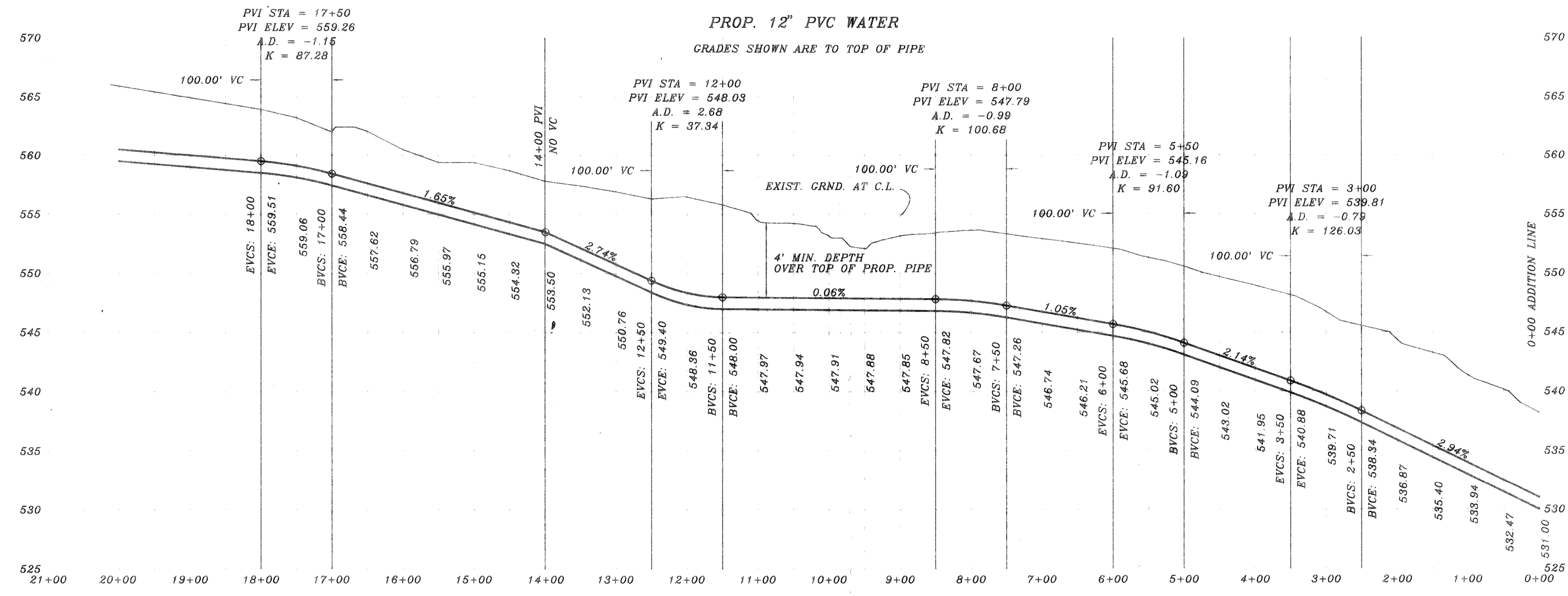


SEE SHT. 15
I.H. 30

SEE SHT. 20



12-21-95

B.M.
TOP OF EXIST. SAN. SEW. M.H.
LOCATED AT PAV. STA. (0+25), 4' LT.
WILDFLOWER WAY
ELEVATION = 515.72

B.M.
TOP OF EXIST. M.H. AT WEST
CORNER OF LOT 20, BLOCK A, OF
HIGHLAND MEADOWS
ELEVATION = 514.85

REV. HWY CONN. 12/20/95	9663WIT	HAROLD L. EVANS CONSULTING ENGINEER P.O. BOX 28355 2331 GUS THOMASSON ROAD, SUITE 102 DALLAS, TEXAS 75228. (214) 328-8133	SCALE 1" = 100' 1" = 6'	DESIGN H.L.E.	DRAWN	12" OFFSITE WATER	SHEET NO. 19
REV. 12' ALIGNMENT 12/11/95							
REV. PER 2nd CITY REVIEW 11/7/95							
REV. 10' TO 12' 10/15/95							
REV. PER CITY REVIEW 8/14/95						HIGHLAND MEADOWS NO. 1	JOB NO. 9563
REVISION DESCRIPTION						CITY OF ROCKWALL	