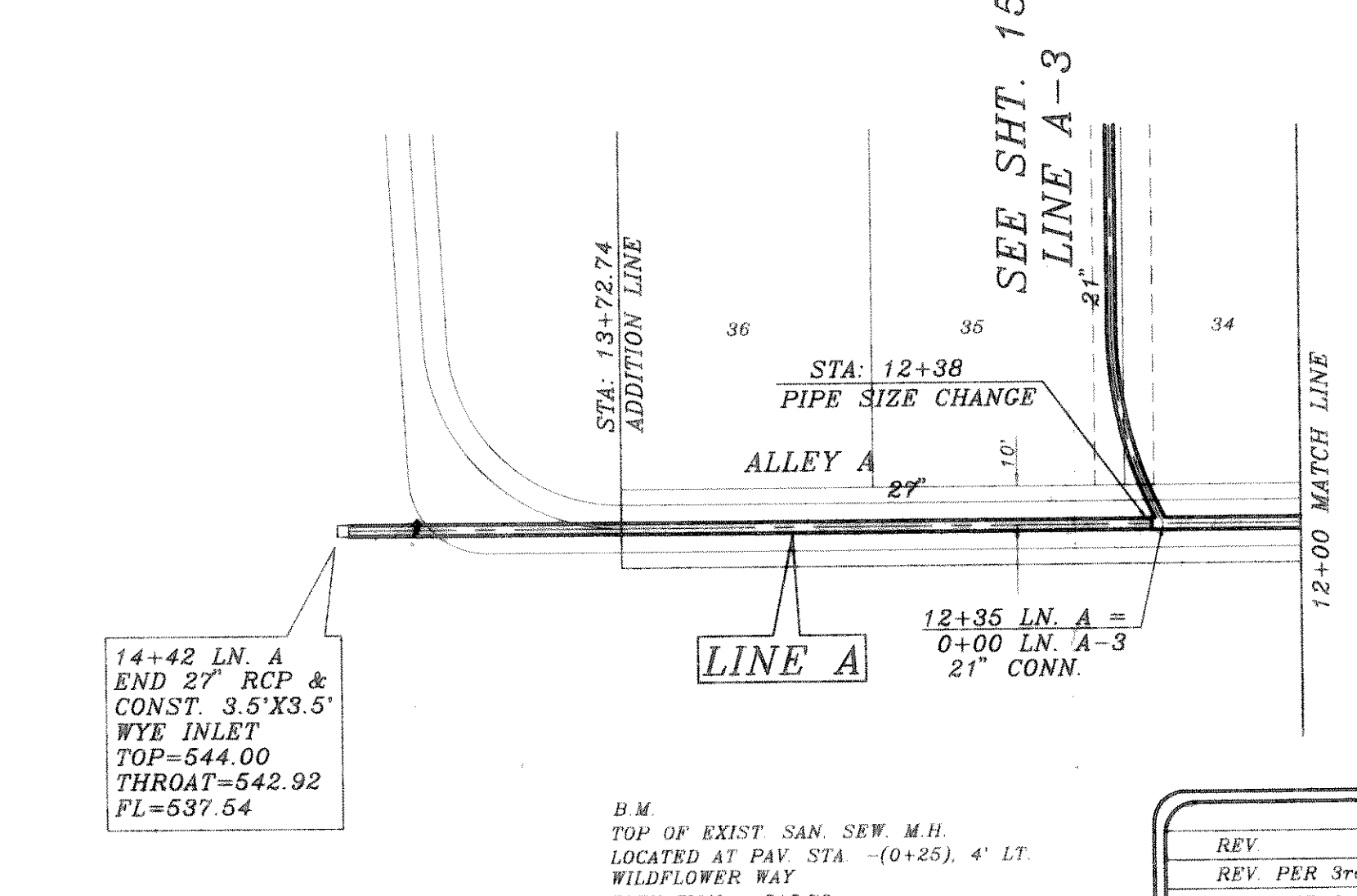
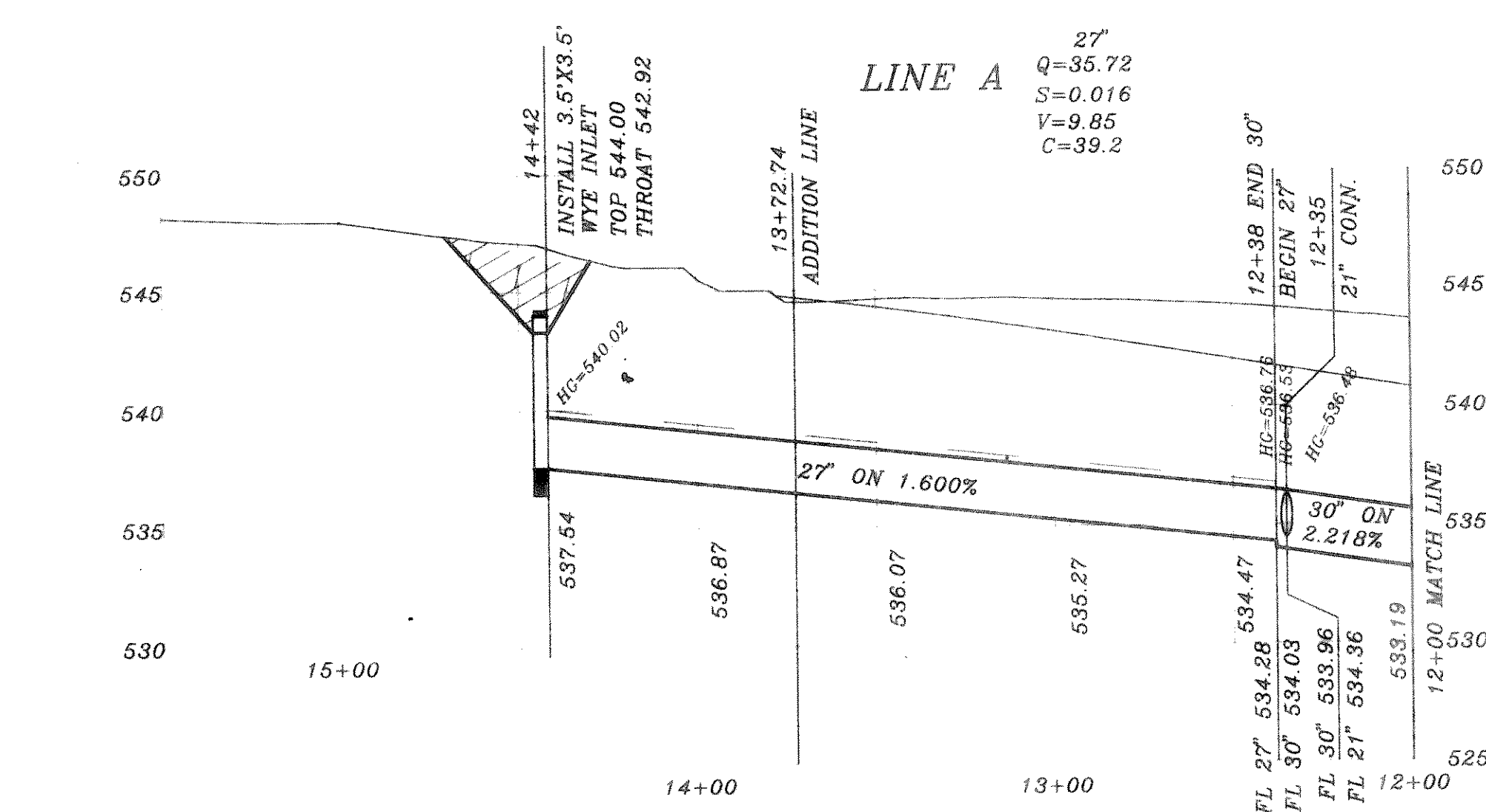
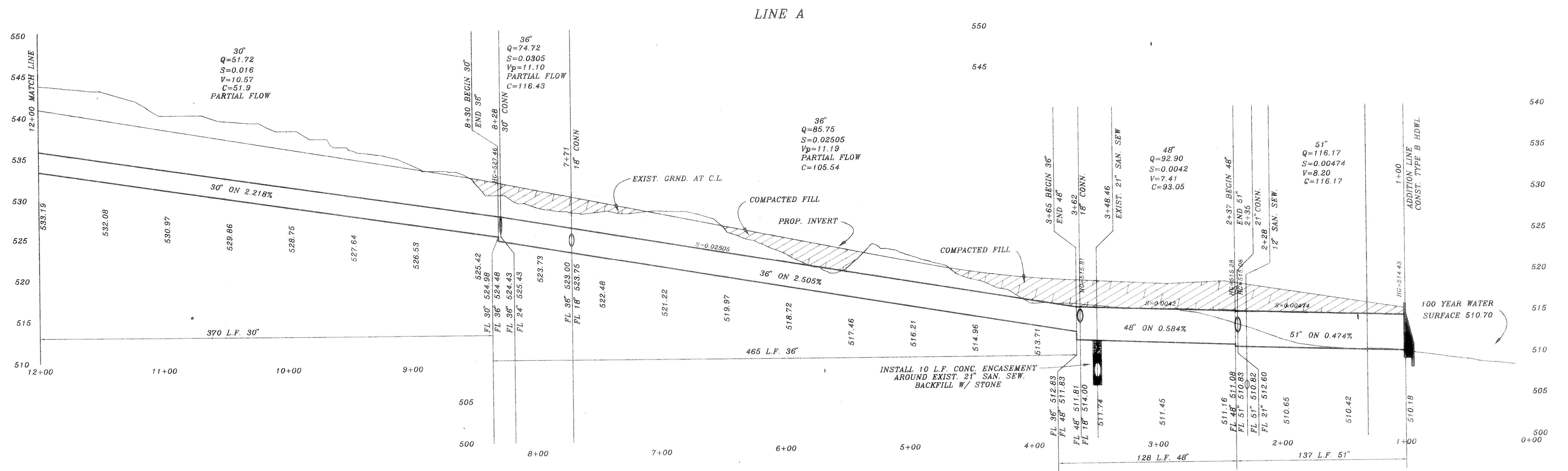
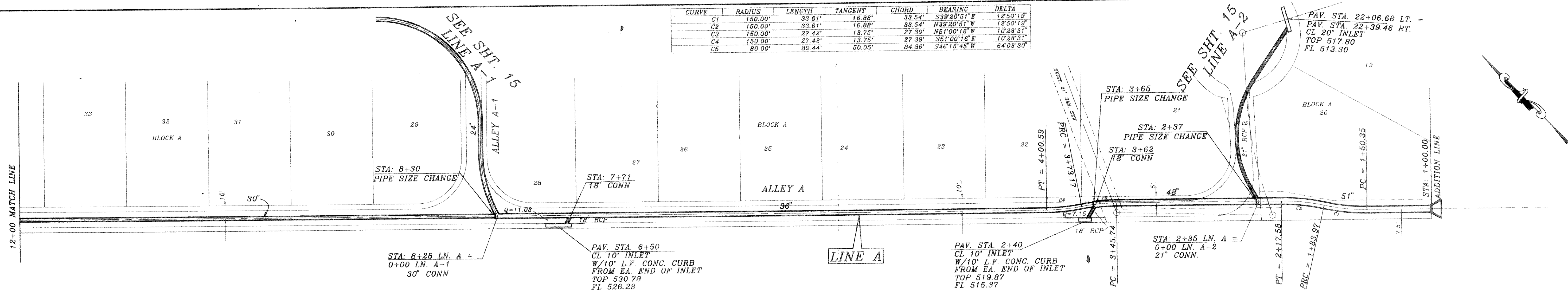


CURVE	RADIUS	LENGTH	TANGENT	CHORD	BEARING	DELTA
C1	150.00'	33.61'	16.88'	33.54'	S39°20'51" E	12°50'19"
C2	150.00'	33.61'	16.88'	33.54'	N39°20'51" W	12°50'19"
C3	150.00'	27.42'	13.75'	27.39'	N51°00'16" W	10°28'31"
C4	150.00'	27.42'	13.75'	27.39'	S51°00'16" E	10°28'31"
C5	80.00'	89.44'	50.05'	84.86'	S46°15'45" W	64°03'30"



B.M.
TOP OF EXIST. SAN. SEW. M.H.
LOCATED AT PAV. STA. - (0+25), 4' LT.
WILDFLOWER WAY
ELEVATION = 515.72

B.M.
TOP OF EXIST. M.H. AT WEST
CORNER OF LOT 20, BLOCK A. OF
HIGHLAND MEADOWS
ELEVATION = 514.85

REV	DESCRIPTION	DATE
1	REV PER 3rd CITY REVIEW	11/16/95
2	REV PER 2nd CITY REVIEW	11/16/95
3	ADDED LN. A-3	10/12/95
4	REV PER CITY REVIEW	8/14/95

36635711
1/2/96
11/16/95
11/16/95
10/12/95
8/14/95

HAROLD L. EVANS
CONSULTING ENGINEER
P.O. BOX 28355
2331 GUS THOMASSON ROAD, SUITE 102
DALLAS, TEXAS 75228 (214) 328-8133

STORM SEWER
LINE A
HIGHLAND MEADOWS NO. 1
CITY OF ROCKWALL

SHEET NO.
14
23
JOB NO.
9563

