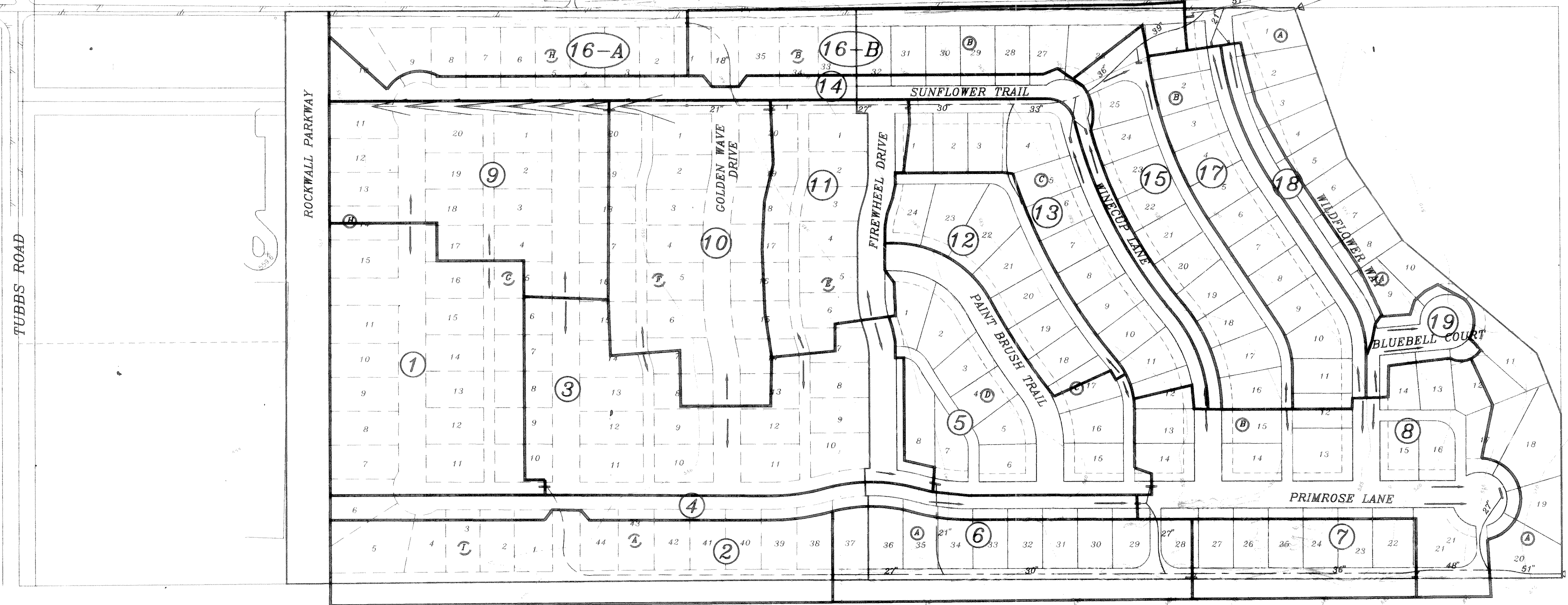


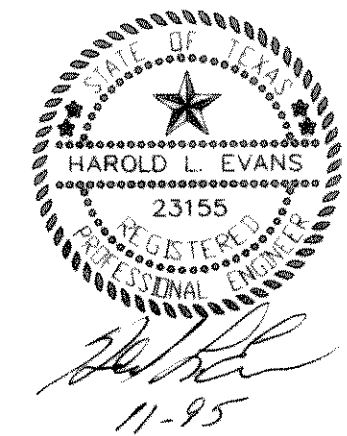
I.H. 30

MIMS ROAD



DRAINAGE TABLE

DRAINAGE AREA NO.	ACRES	T.C.	C	I 100 YR.	Q 100 YR.	SUM Q 100 YR.
1	3.88	10	0.5	9.8	19.01	19.01
2	3.41	"	"	"	16.71	35.72
3	4.15	"	"	"	20.34	20.34
4	1.54	"	"	"	7.54	27.88
5	3.02	"	"	"	14.79	42.67
6	2.25	"	"	"	11.03	53.70
7	1.46	"	"	"	7.15	60.85
8	4.00	"	"	"	19.60	80.45
TOTAL	23.71					116.17
9	3.33	10	0.5	9.8	16.32	16.32
10	3.49	"	"	"	17.09	33.41
11	2.35	"	"	"	11.53	44.94
12	1.67	"	"	"	8.18	53.12
13	2.42	"	"	"	11.86	64.98
14	1.74	"	"	"	8.53	73.51
15	2.08	"	"	"	10.19	83.70
16-A	1.76	"	"	"	8.61	92.31
16-B	2.37	"	"	"	11.62	103.92
17	2.32	"	"	"	11.53	115.45
18	0.60	"	"	"	2.95	118.40
TOTAL	24.88					118.40
19	0.55	"	"	"	2.70	2.70



9563DRN REV PER 2nd CITY REVIEW 11/9/95 REV PER STM SEW REV 10/15/95 REV PER CITY REVIEW 8/14/95		HAROLD L. EVANS CONSULTING ENGINEER P.O. BOX 28355 2331 CUS THOMASSON ROAD, SUITE 102 DALLAS, TEXAS 75228 (214) 328-8133		DRAINAGE AREA MAP HIGHLAND MEADOWS NO. 1		SHEET NO. 13 / 23
REVISION DESCRIPTION		DATE 7/13/95	SCALE 1" = 100'	DESIGN H.L.E.	DRAWN	JOB NO. 9563
CITY OF ROCKWALL						