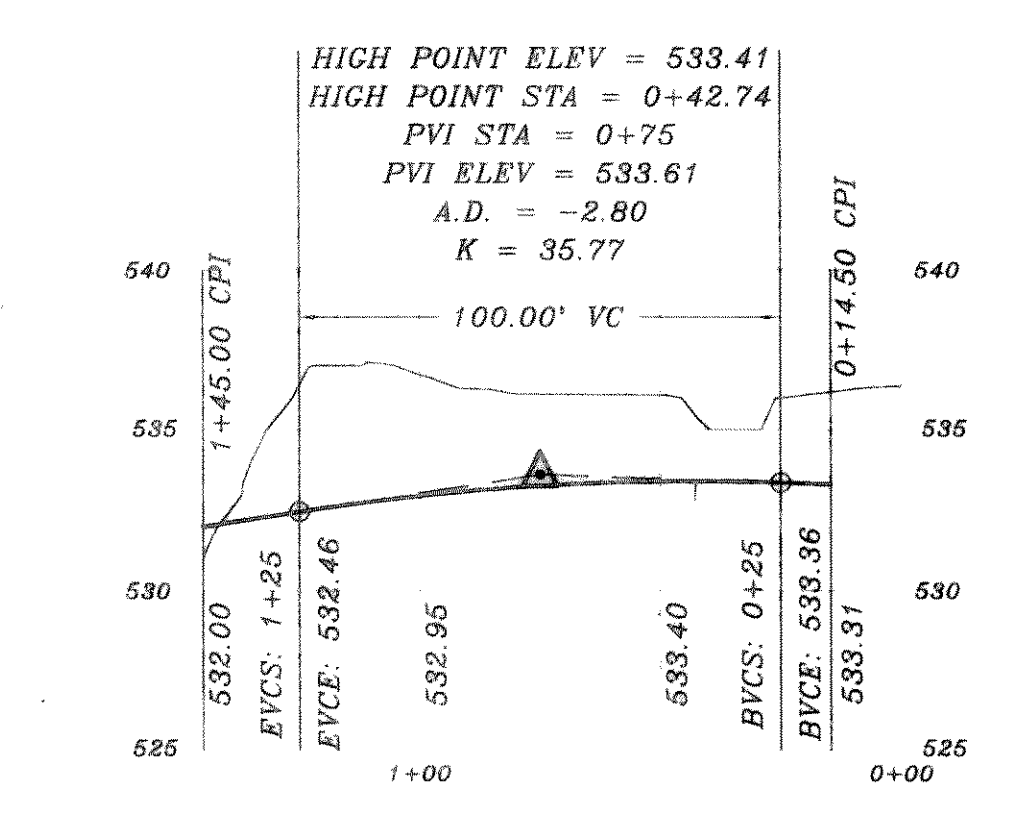
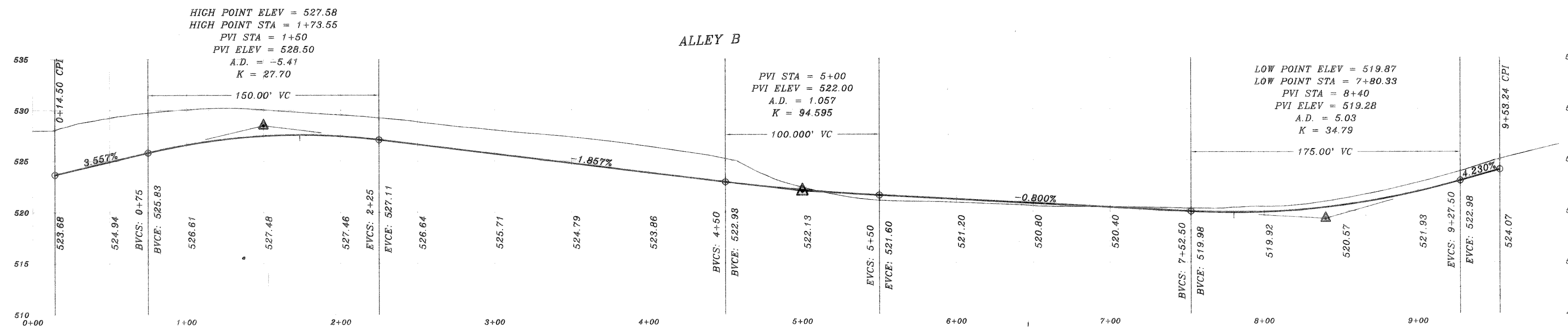
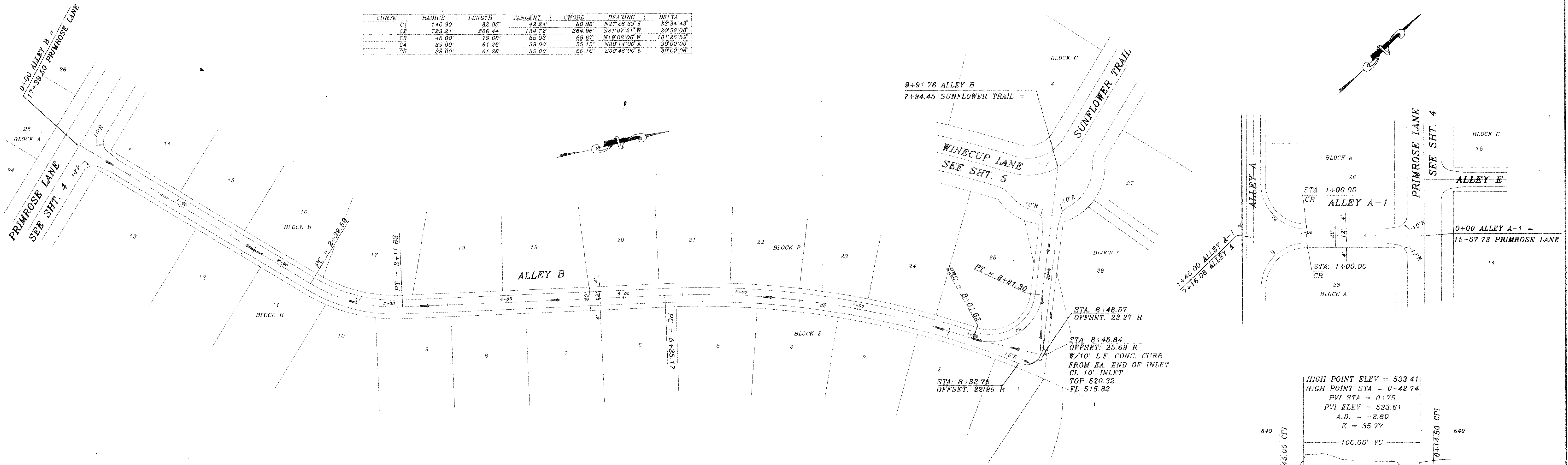


| CURVE | RADIUS | LENGTH | TANGENT | CHORD | BEARING | DELTA |
|-------|---------|---------|---------|---------|--------------|------------|
| C1 | 140.00' | 82.05' | 42.24' | 80.88' | N27°26'39" E | 33°34'42" |
| C2 | 729.21' | 266.44' | 134.72' | 284.96' | S21°07'21" W | 20°56'06" |
| C3 | 45.00' | 79.68' | 35.93' | 59.67' | N1°30'06" W | 161°36'59" |
| C4 | 39.00' | 61.26' | 39.00' | 55.15' | N89°14'00" E | 90°00'00" |
| C5 | 39.00' | 61.26' | 39.00' | 55.16' | S00°46'00" E | 90°00'00" |



B.M.
TOP OF EXIST. SAN. SEW. M.H.
LOCATED AT PAV. STA. -(0+25), 4' LT.
WILDFLOWER WAY
ELEVATION = 515.72

B.M.
TOP OF EXIST. M.H. AT WEST
CORNER OF LOT 20, BLOCK A, OF
HIGHLAND MEADOWS
ELEVATION = 514.85

| REVISION DESCRIPTION | DATE | SCALE | DESIGN | DRAWN |
|--------------------------|---------|----------|--------|-------|
| REV. ALLEY A-1 | 1/2/96 | 1" = 40' | H.L.E. | |
| REV. PER 2nd CITY REVIEW | 11/2/95 | 1" = 6" | | |
| REV. PER CITY REVIEW | 8/14/95 | | | |
| | 7/10/96 | | | |

| | | | |
|---|--|--|-------------------------|
| <p>HAROLD L. EVANS CONSULTING ENGINEER P.O. BOX 28355 2331 CUS THOMASSON ROAD, SUITE 102 DALLAS, TEXAS 75228 (214) 328-8133</p> | <p>PROPOSED PAVING ALLEY B & A-1 HIGHLAND MEADOWS NO. 1 CITY OF ROCKWALL</p> | | <p>SHEET NO. 11</p> |
| | | | <p>JOB NO. 9563</p> |
| | | | |

