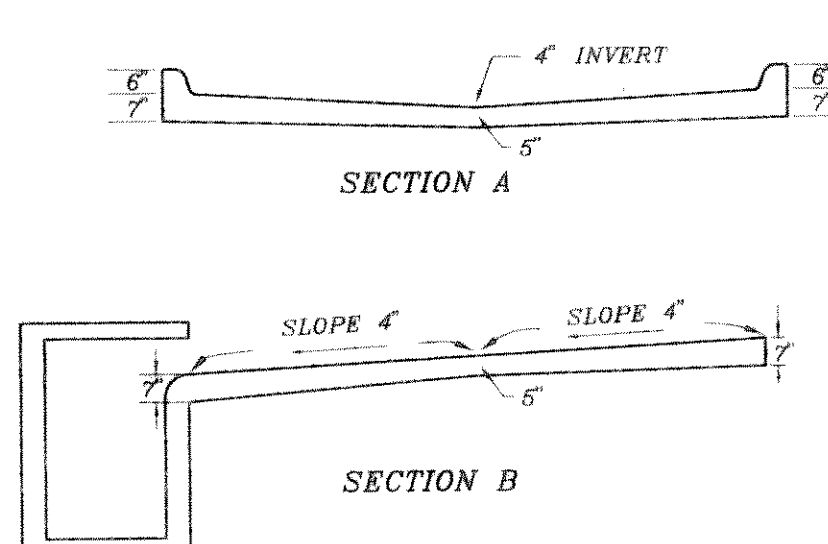
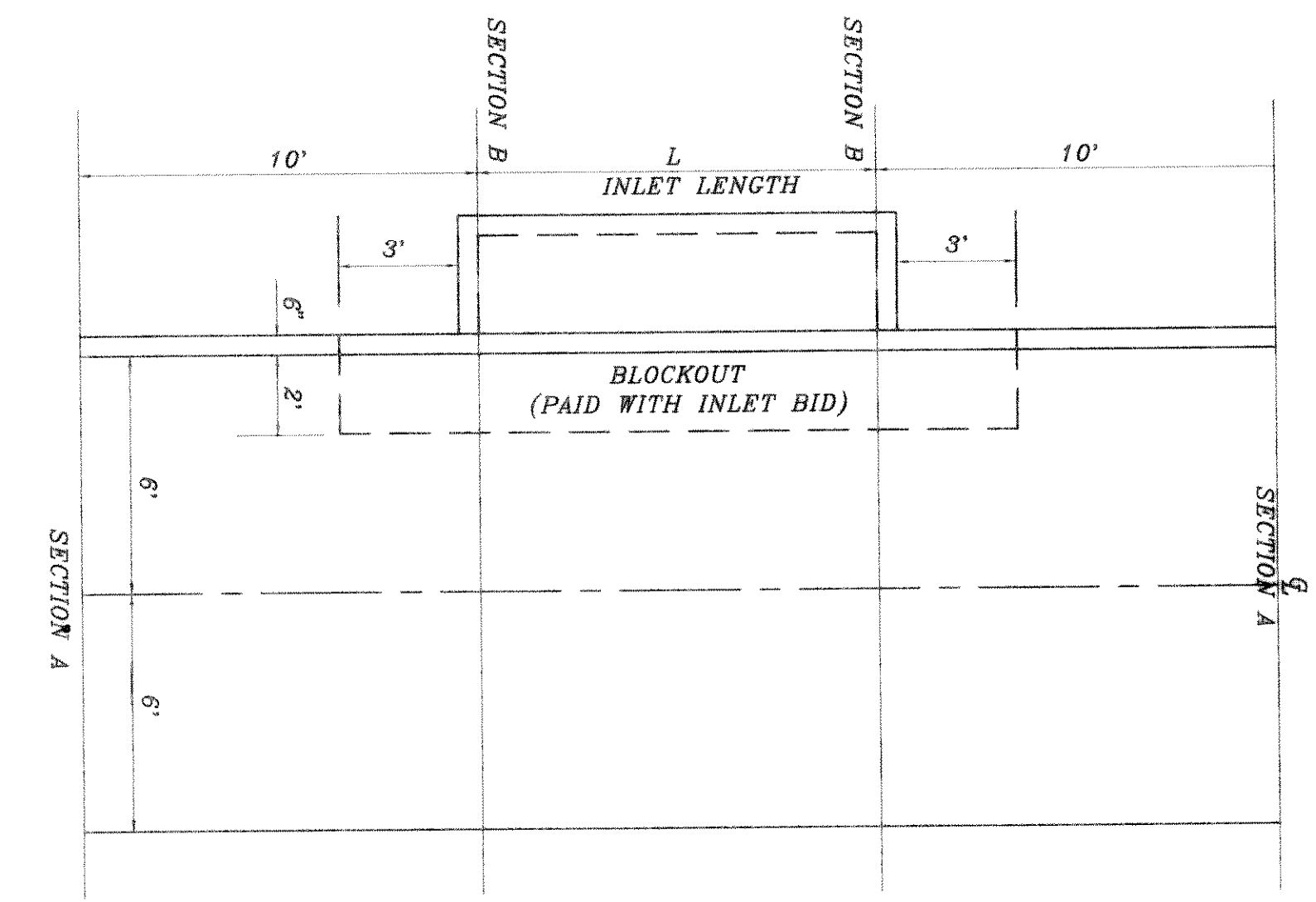
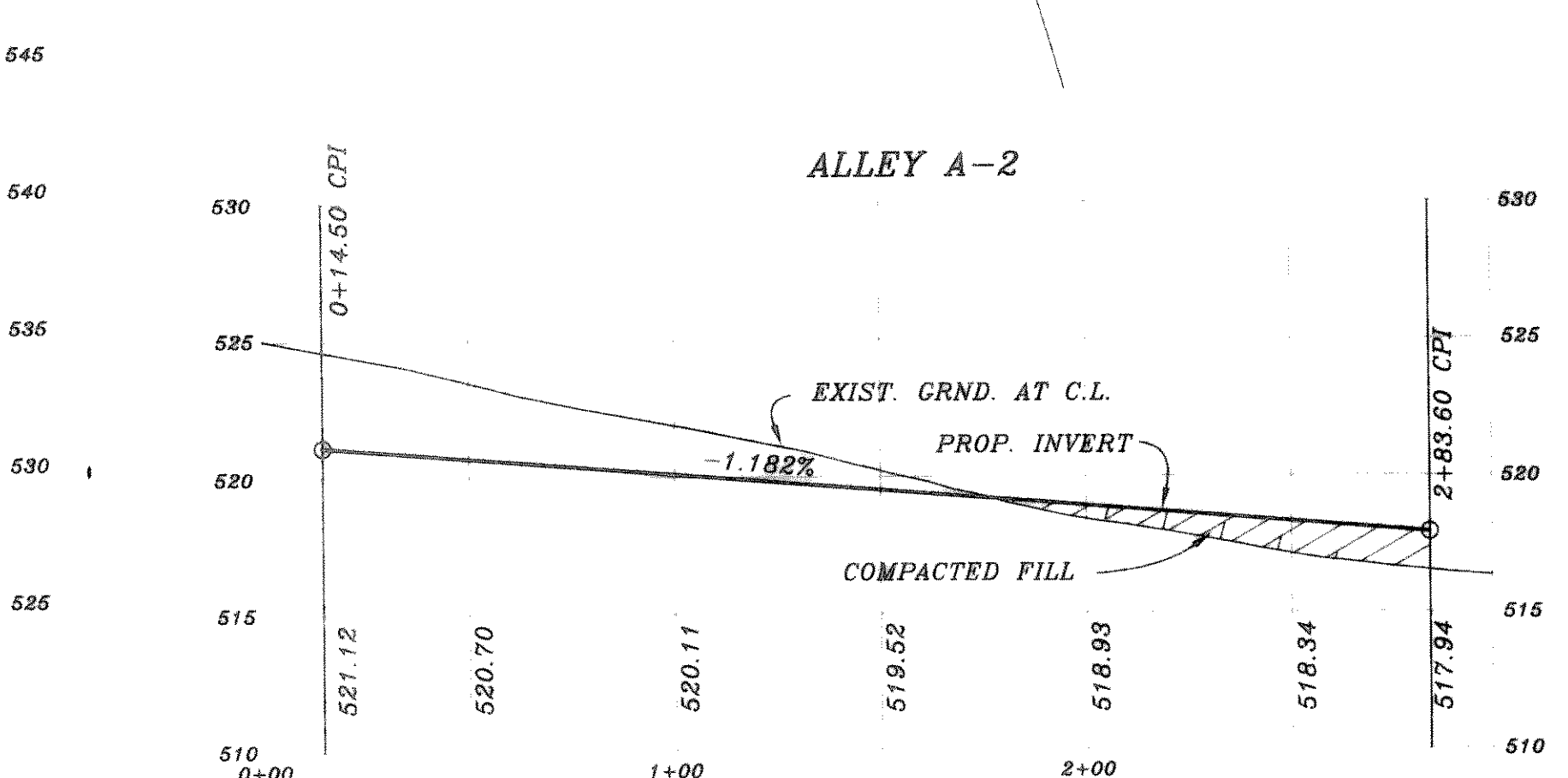
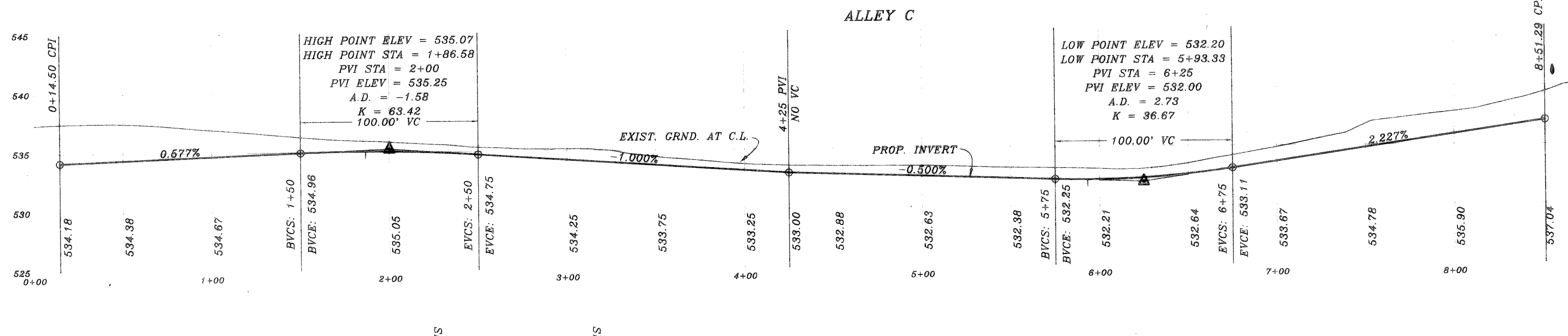
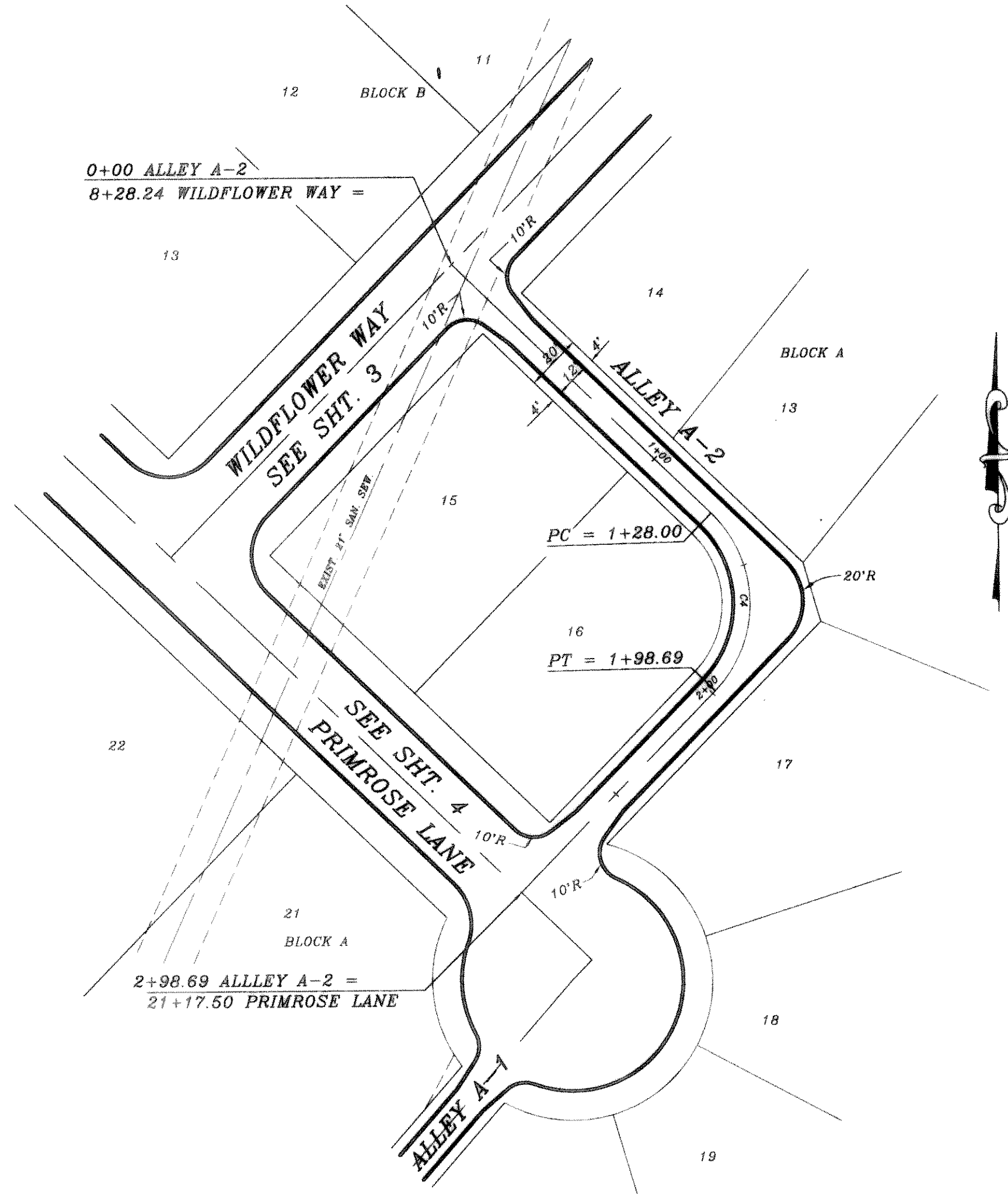
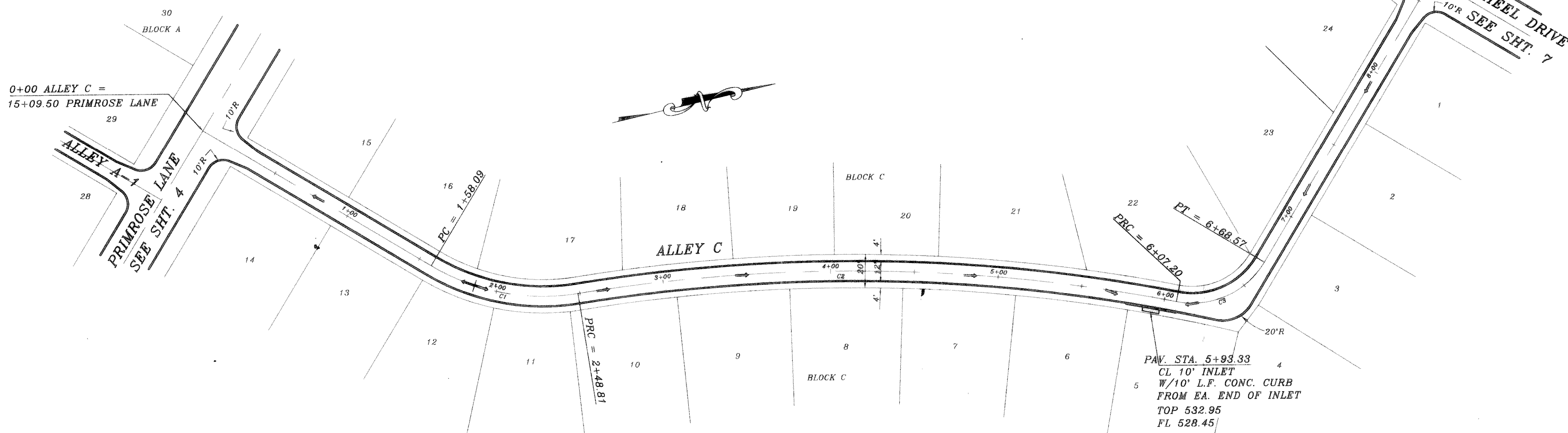


CURVE	RADIUS	LENGTH	TANGENT	CHORD	BEARING	DELTA
C1	130.00'	90.73'	47.30'	88.90'	N24°14'26" E	39°59'10"
C2	1019.21'	358.39'	181.06'	356.54'	S14°19'15" W	20°08'49"
C3	50.00'	61.37'	35.22'	57.59'	N10°48'06" W	70°19'31"
C4	45.00'	70.69'	45.00'	63.64'	N07°45'00" W	90°00'06"



ALLEY INLET SECTION
SCALE: 1" = 4'

B.M. TOP OF EXIST SAN SEW M.H. LOCATED AT PAV STA. -(0+25), 4' LT WILDFLOWER WAY ELEVATION = 515.72
B.M. TOP OF EXIST M.H. AT WEST CORNER OF LOT 20, BLOCK A, OF HIGHLAND MEADOWS ELEVATION = 514.85

REV. PER CITY REVIEW	DATE	SCALE	DESIGN	DRAWN
	8/14/95	1" = 40' 1" = 6'	H.L.E.	
<p>REVISION DESCRIPTION</p>				
<p>HAROLD L. EVANS CONSULTING ENGINEER 2331 GUS THOMASSON ROAD, SUITE 102 DALLAS, TEXAS 75228. (214) 328-8133</p>				
<p>PROPOSED PAVING ALLEY A-2 & C HIGHLAND MEADOWS NO. 1 CITY OF ROCKWALL</p>				
				<p>SHEET NO. 10 23 JOB NO. 9563</p>

