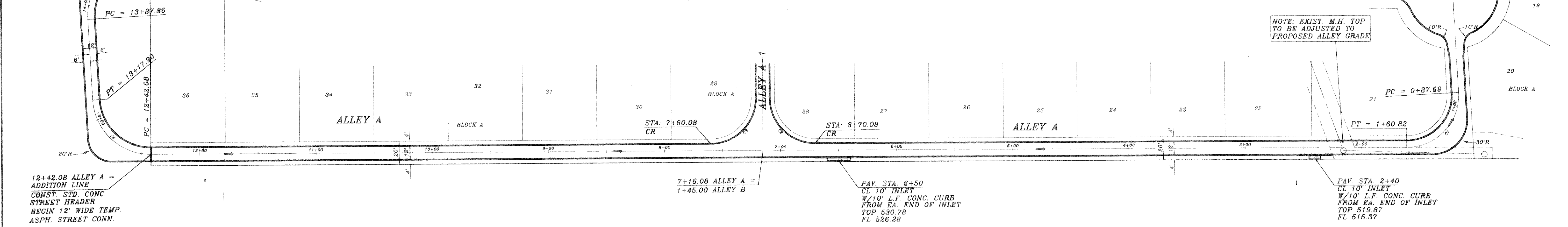


PT 14+67.47 ALLEY A =
10+22.97 PRIMROSE LANE =
ADDITION LINE
CONST. STD. CONC.
STREET HEADER
BEGIN CONC. PVMT.

12' WIDE TEMP.
ASPH. CONN.

SEE SHT. 4
PRIMROSE LANE

CURVE	RADIUS	LENGTH	TANGENT	CHORD	BEARING	DELTA
C1	45.00'	73.12'	47.50'	65.34'	N87°41'00"E	93°06'03"
C2	39.00'	61.26'	39.00'	55.15'	S00°46'00"E	90°00'06"
C3	39.00'	61.26'	39.00'	55.15'	N87°14'00"E	90°00'00"
C4	50.00'	75.83'	47.36'	68.77'	S02°19'16"E	96°53'28"
C5	50.00'	79.61'	51.08'	71.46'	S86°44'18"W	91°13'38"



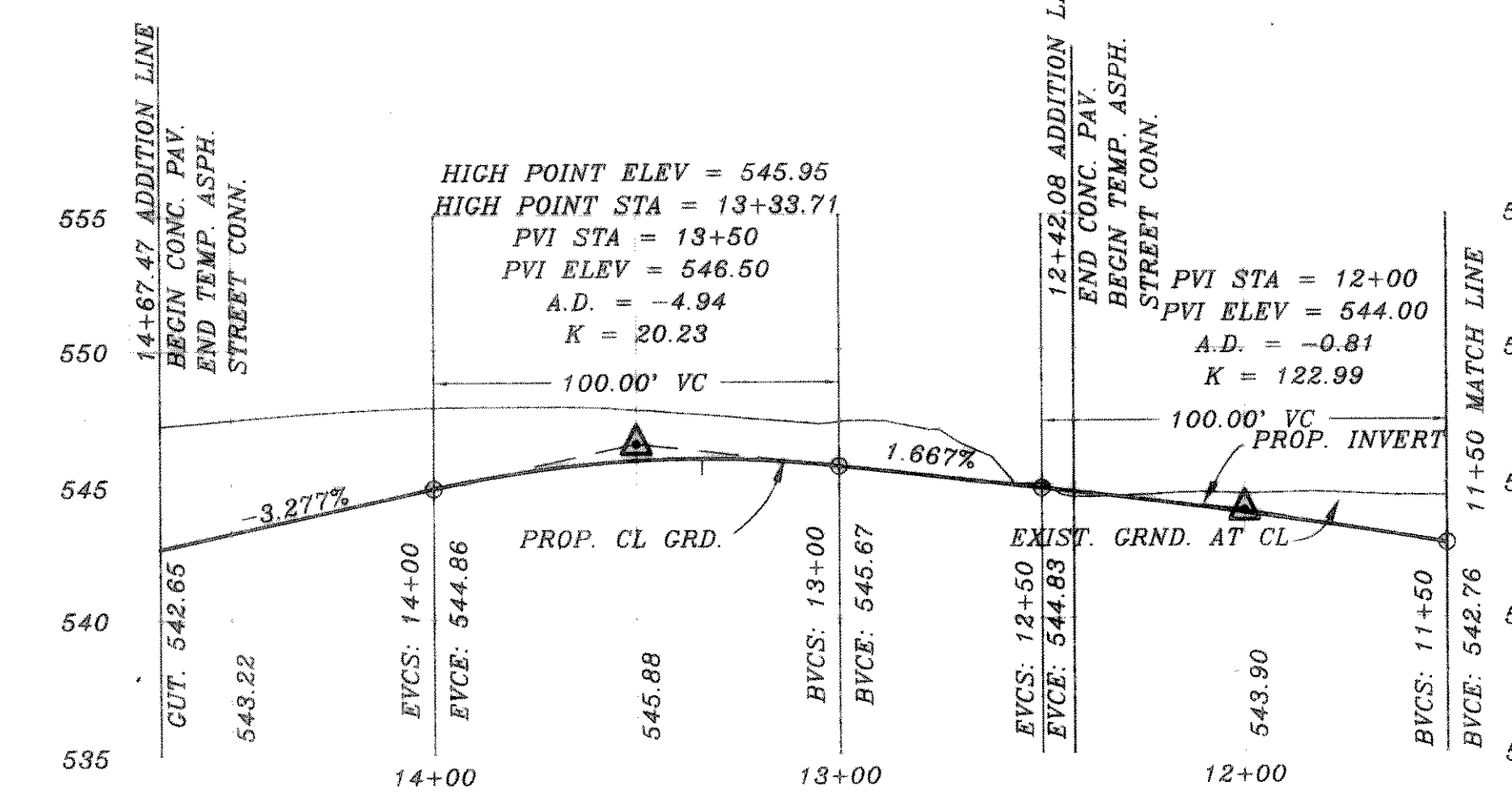
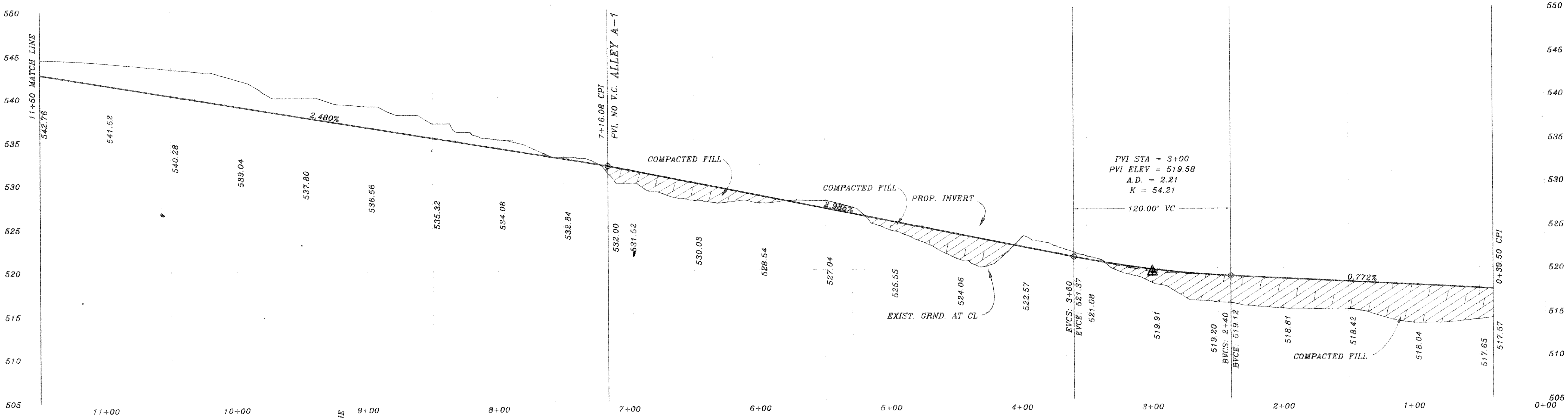
NOTE: EXIST. M.H. TOP
TO BE ADJUSTED TO
PROPOSED ALLEY GRADE

12+42.08 ALLEY A =
ADDITION LINE
CONST. STD. CONC.
STREET HEADER
BEGIN 12' WIDE TEMP.
ASPH. STREET CONN.

7+16.08 ALLEY A =
1+45.00 ALLEY B

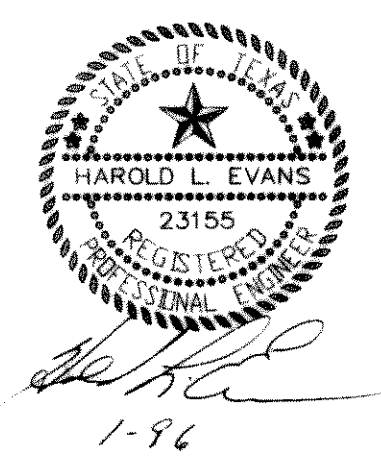
PAV. STA. 6+50
CL 10" INLET
W/10' L.F. CONC. CURB
FROM EA. END OF INLET
TOP 530.78
FL 526.28

PAV. STA. 2+40
CL 10" INLET
W/10' L.F. CONC. CURB
FROM EA. END OF INLET
TOP 519.87
FL 515.37



B.M.
TOP OF EXIST. SAN. SEW. M.H.
LOCATED AT PAV. STA. -(0+25), 4' LT.
WILDFLOWER WAY
ELEVATION = 515.72

B.M.
TOP OF EXIST. M.H. AT WEST
CORNER OF LOT 20, BLOCK A, OF
HIGHLAND MEADOWS
ELEVATION = 514.85



REVISION DESCRIPTION	DATE	SCALE	DESIGN	DRAWN
	7/10/95	1" = 40' 1" = 6'	H.L.E.	

HAROLD L. EVANS
CONSULTING ENGINEER
P.O. BOX 28355
2331 CUS THOMASSON ROAD, SUITE 102
DALLAS, TEXAS 75228. (214) 328-8133

PROPOSED PAVING
ALLEY A
HIGHLAND MEADOWS NO. 1
CITY OF ROCKWALL

SHEET NO.
9
23
JOB NO.
9563