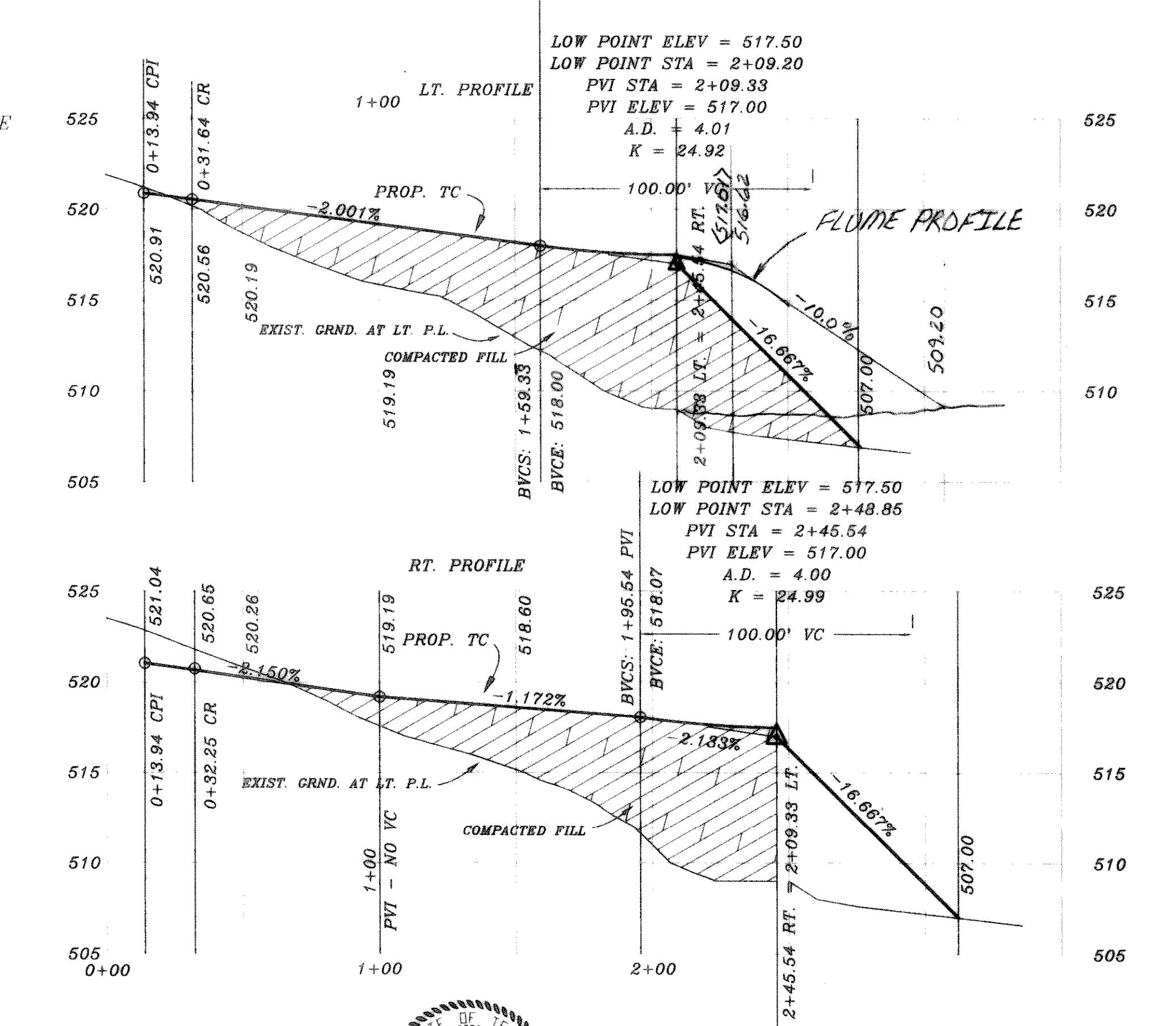
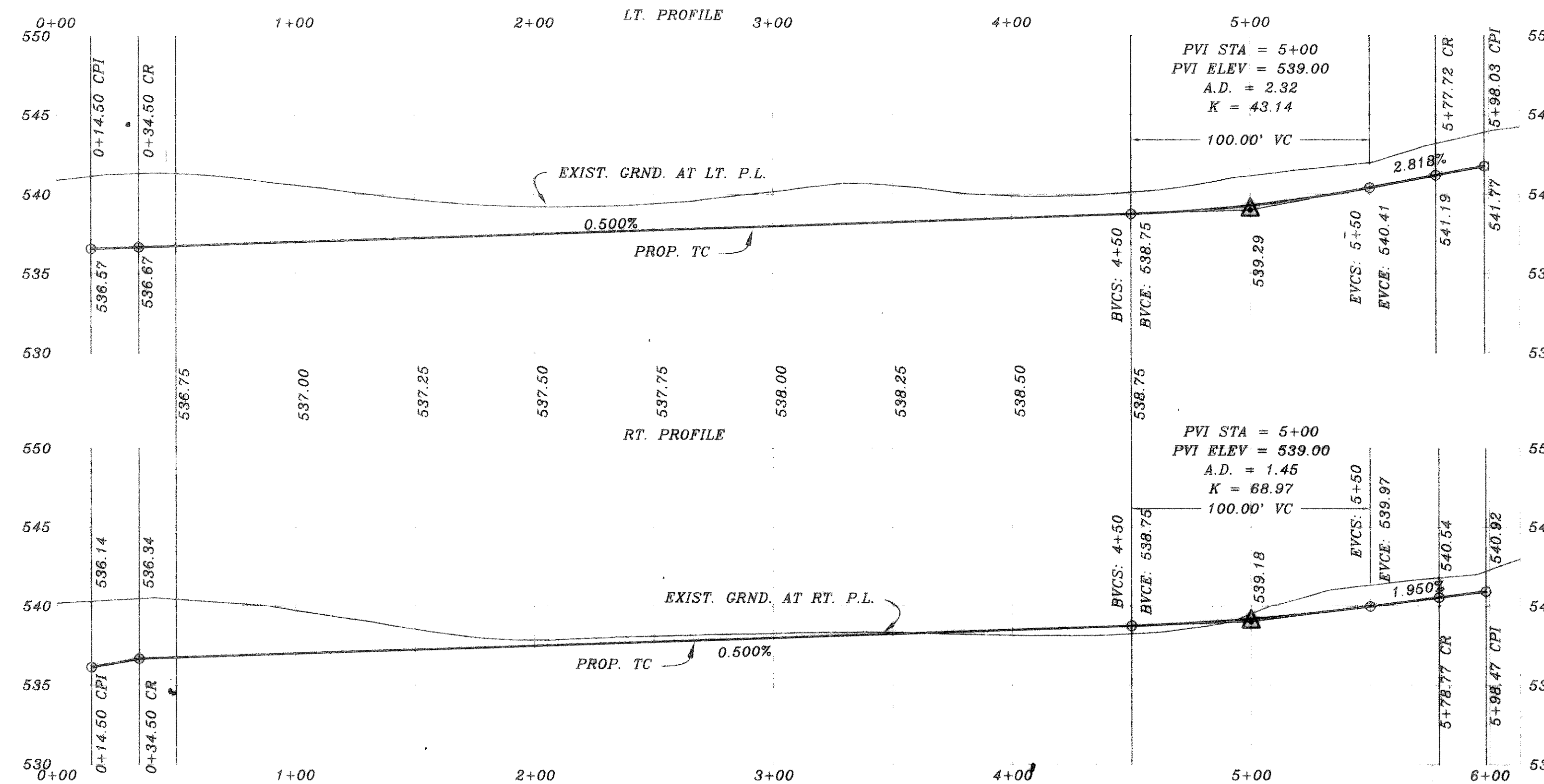
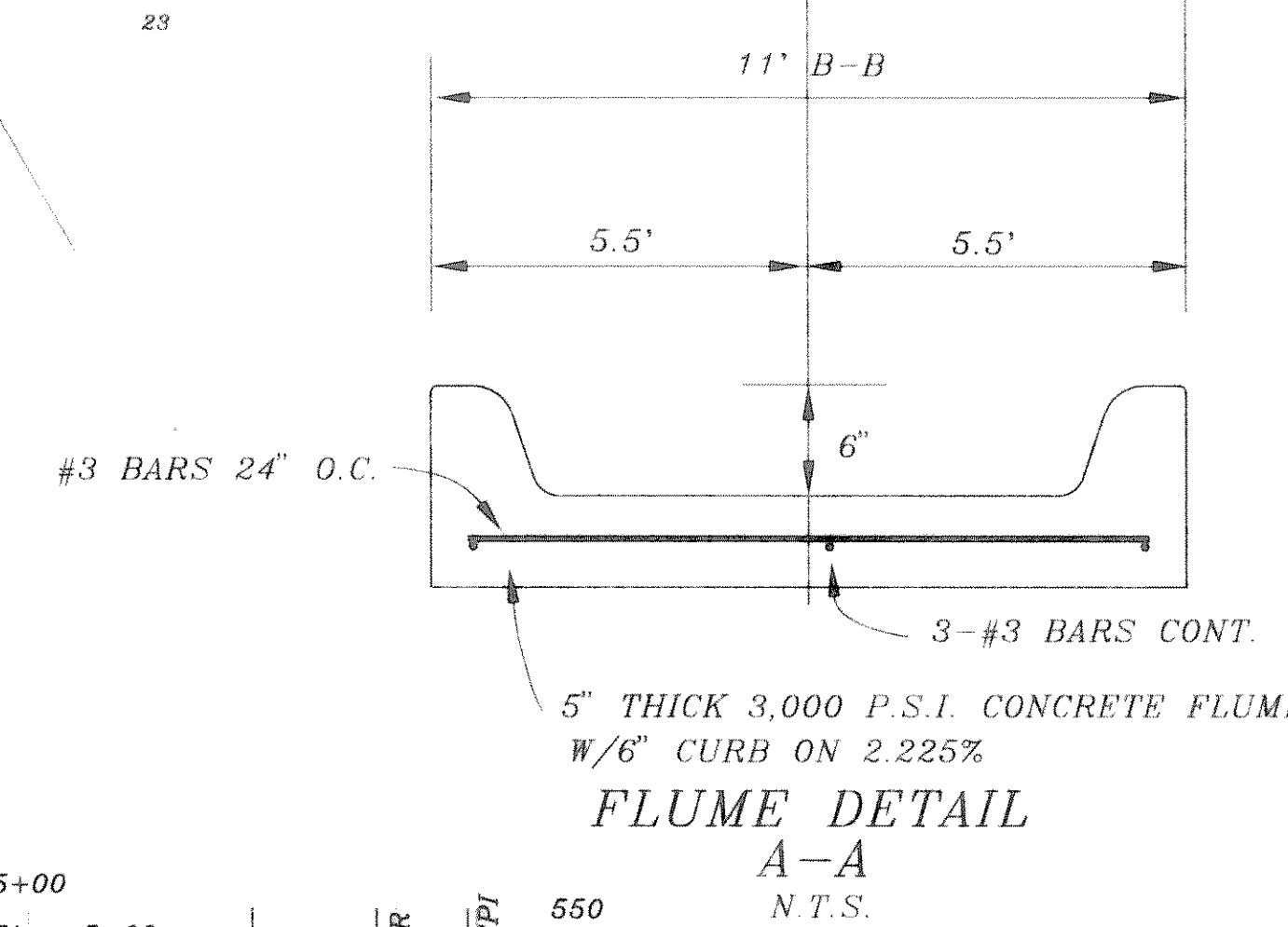
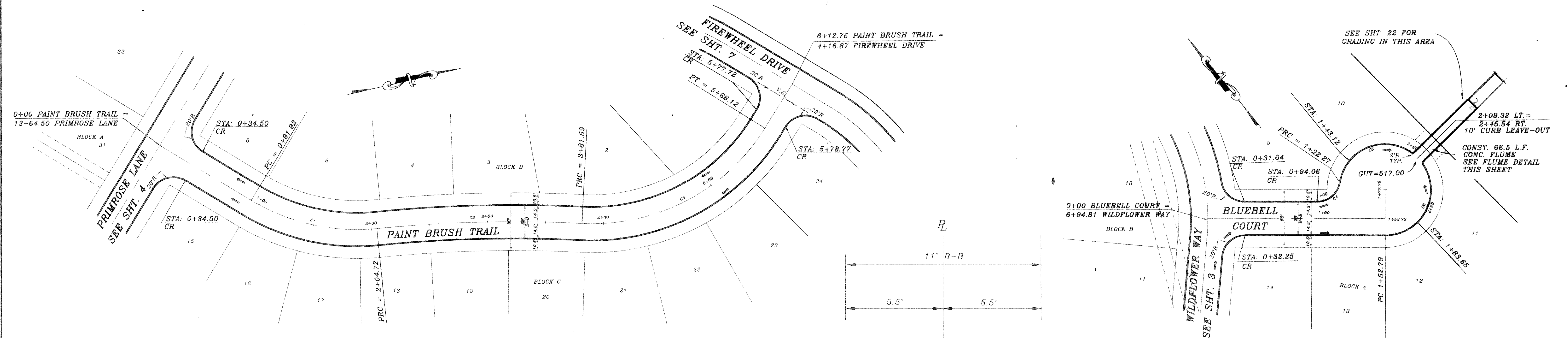


CURVE	RADIUS	LENGTH	TANGENT	CHORD	BEARING	DELTA
C1	175.00'	172.80'	58.44'	110.95'	N25°46'07" E	36°55'48"
C2	1164.21'	176.87'	88.61'	176.70'	S11°39'21" W	08°42'16"
C3	175.00'	186.53'	103.23'	177.83'	N14°31'39" W	61°04'17"
C4	20.00'	28.21'	17.03'	25.93'	N88°42'17" E	80°48'55"
C5	39.50'	87.06'	77.99'	70.48'	N68°33'46" W	126°16'50"
C6	39.50'	92.75'	84.27'	72.86'	N61°50'39" E	134°31'59"



B.M.  
TOP OF EXIST. SAN. SEW. M.H.  
LOCATED AT PAV. STA. -(0+26), 4' LT.  
WILDFLOWER WAY  
ELEVATION = 515.72

B.M.  
TOP OF EXIST. M.H. AT WEST  
CORNER OF LOT 20, BLOCK A, OF  
HIGHLAND MEADOWS  
ELEVATION = 514.85

HAROLD L. EVANS CONSULTING ENGINEER P.O. BOX 28355 2311 S. GUS THOMASSON ROAD, SUITE 102 DALLAS, TEXAS 75228 (214) 328-8133		PROPOSED PAVING <b>PAINT BRUSH TRAIL-BLUEBELL COURT</b> HIGHLAND MEADOWS NO. 1 CITY OF ROCKWALL		SHEET NO. 8 23 JOB NO. 9563
REVISION DESCRIPTION 7/10/95	DATE 7/10/95	SCALE 1" = 40' 1" = 6'	DESIGN H.L.E.	DRAWN

