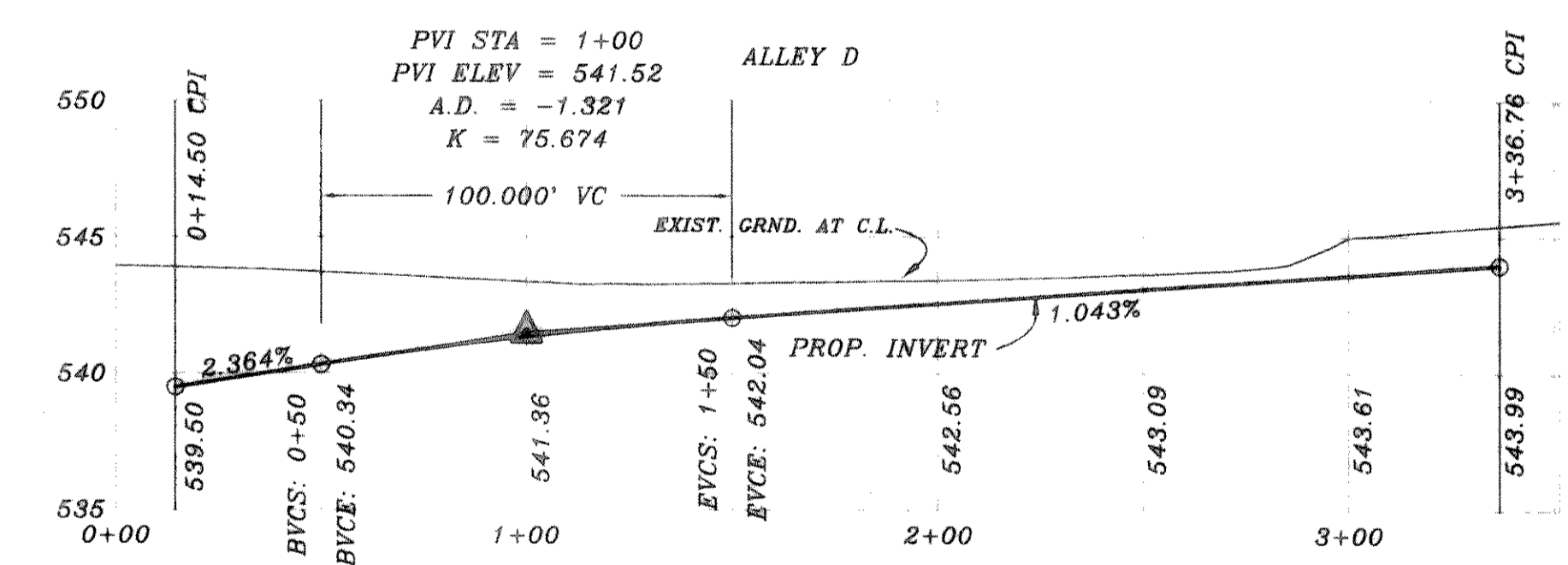
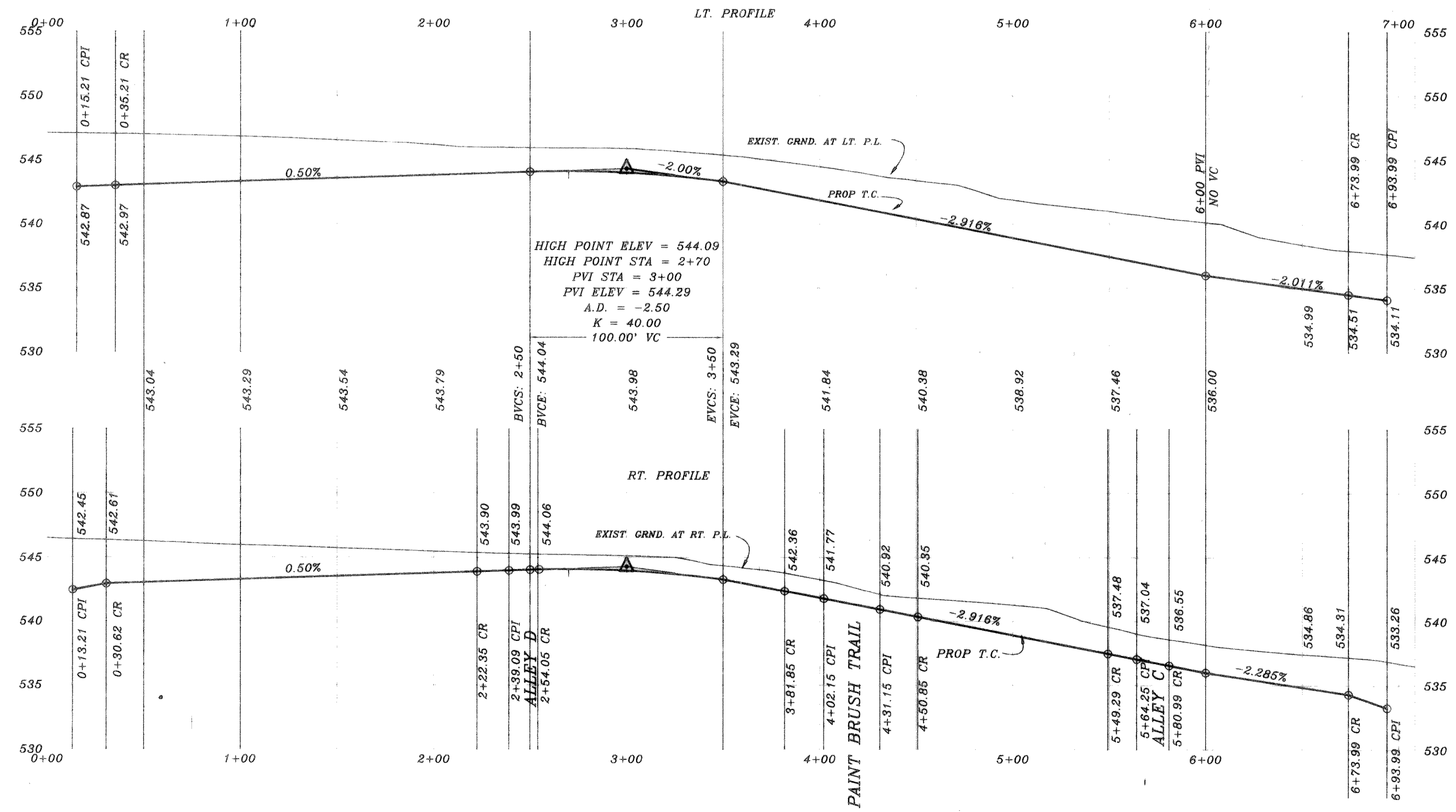
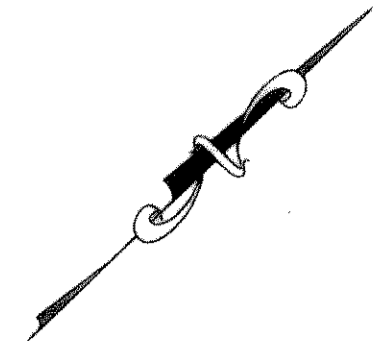


CURVE	RADIUS	LENGTH	TANGENT	CHORD	BEARING	DELTA
C1	175.00'	59.45'	30.01'	59.16'	N34°20'19" E	192°47'
C2	175.00'	59.45'	30.01'	59.16'	S34°20'19" W	192°47'
C3	175.00'	59.45'	30.01'	59.16'	S53°48'05" W	192°48'
C4	175.00'	59.45'	30.01'	59.16'	N53°48'05" E	192°48'
C5	45.00'	28.89'	14.96'	28.40'	N25°50'24" E	364°19'
C6	45.00'	47.14'	25.99'	45.02'	N15°55'04" W	60°1'35"
C7	1304.210'	151.365'	75.768'	151.280'	S10°46'14" W	06°38'59"



B.M.
TOP OF EXIST. SAN. SEW. M.H.
LOCATED AT PAY. STA. (0+25), 4' LT.
WILDFLOWER WAY
ELEVATION = 515.72

B.M.
TOP OF EXIST. M.H. AT WEST
CORNER OF LOT 20, BLOCK A, OF
HIGHLAND MEADOWS
ELEVATION = 514.85

REVISION DESCRIPTION	DATE	SCALE	DESIGN	DRAWN
REV. PER 2nd CITY REVIEW	11/4/95	1" = 40'	H.L.E.	
REV. PER CITY REVIEW	8/14/95	1" = 6'		

HAROLD L. EVANS
CONSULTING ENGINEER
P.O. BOX 28355
2831 GUS THOMASSON ROAD, SUITE 102
DALLAS, TEXAS 75228 (214) 328-8133

PROPOSED PAVING
FIREWHEEL DRIVE & ALLEY D
HIGHLAND MEADOWS NO. 1
CITY OF ROCKWALL



SHEET NO. 7
JOB NO. 9563