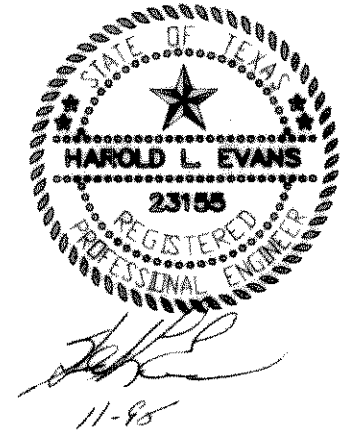
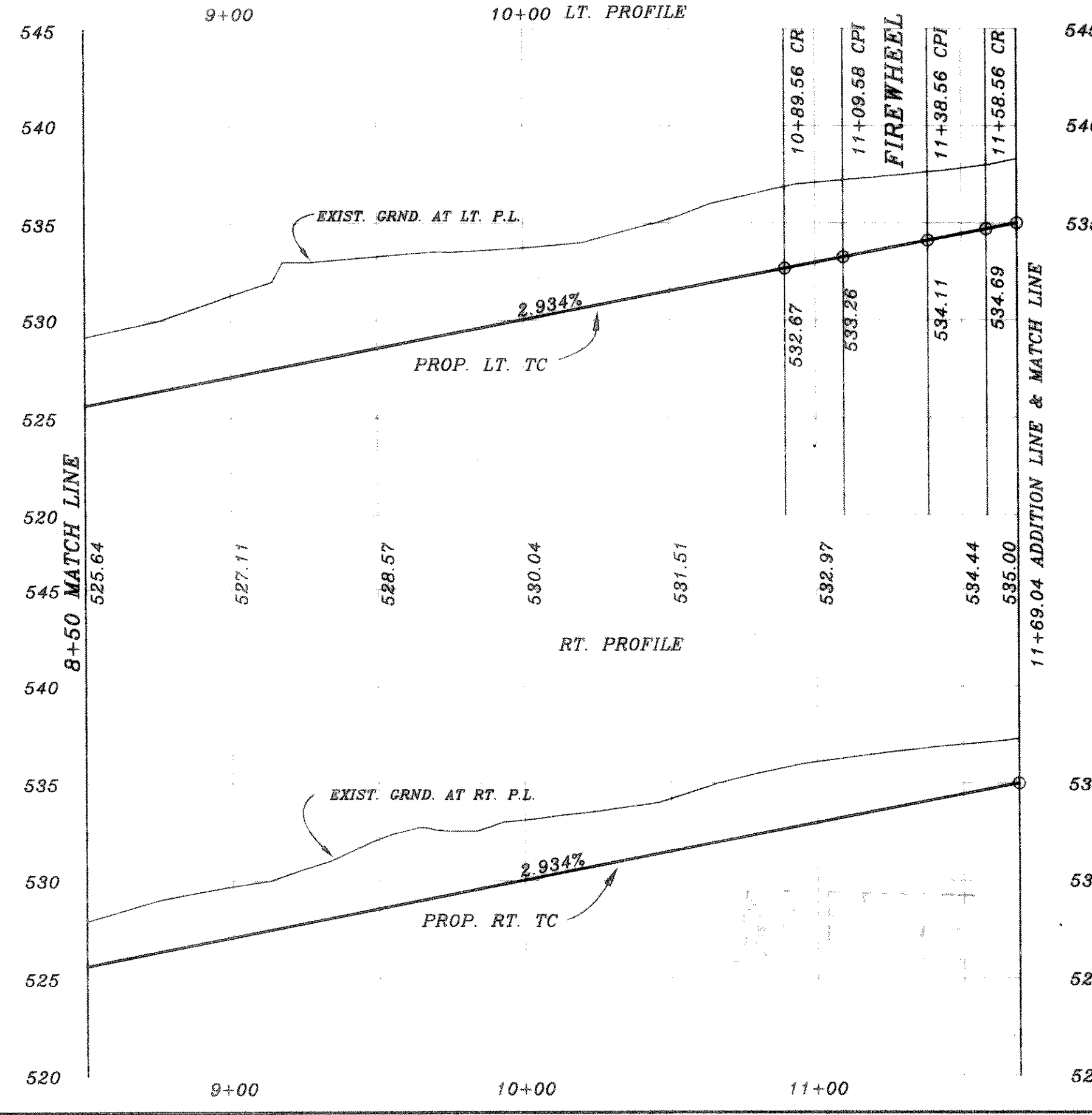
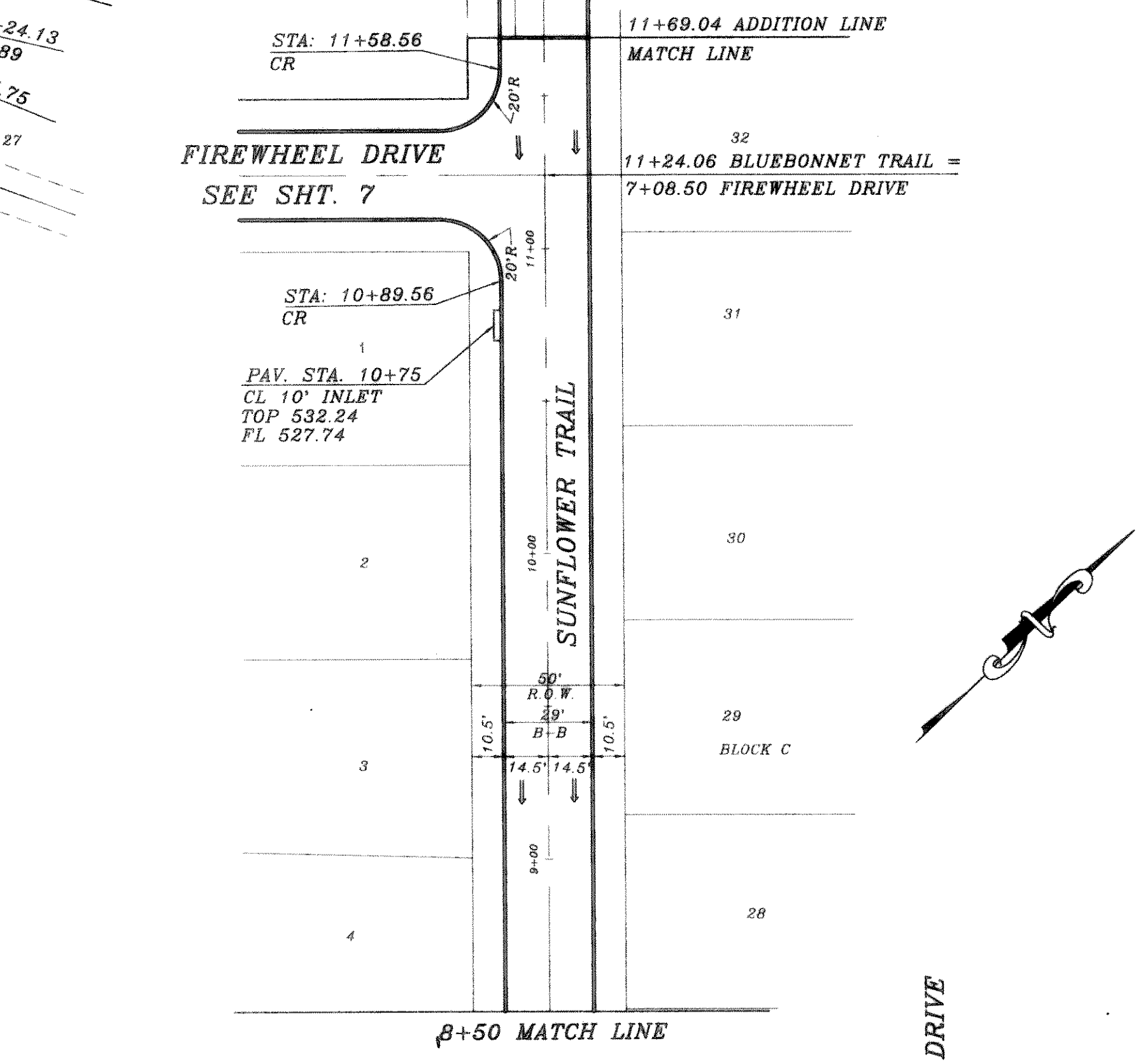
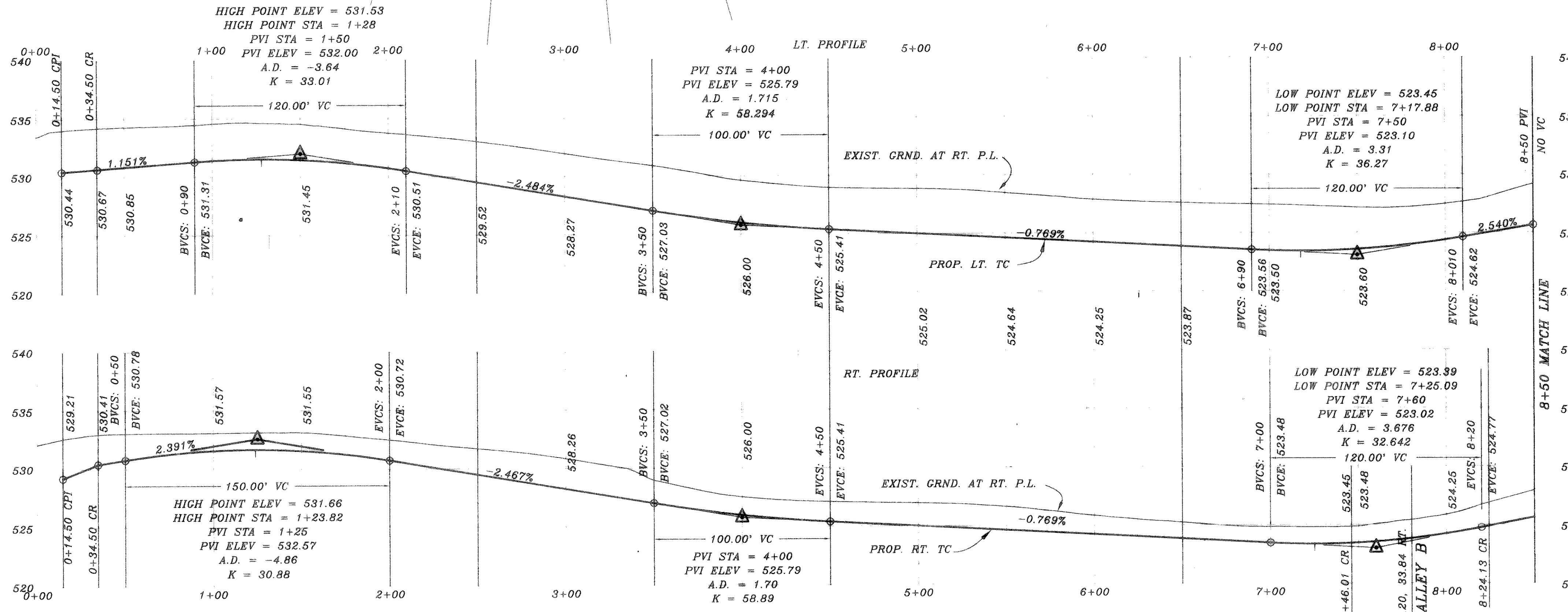
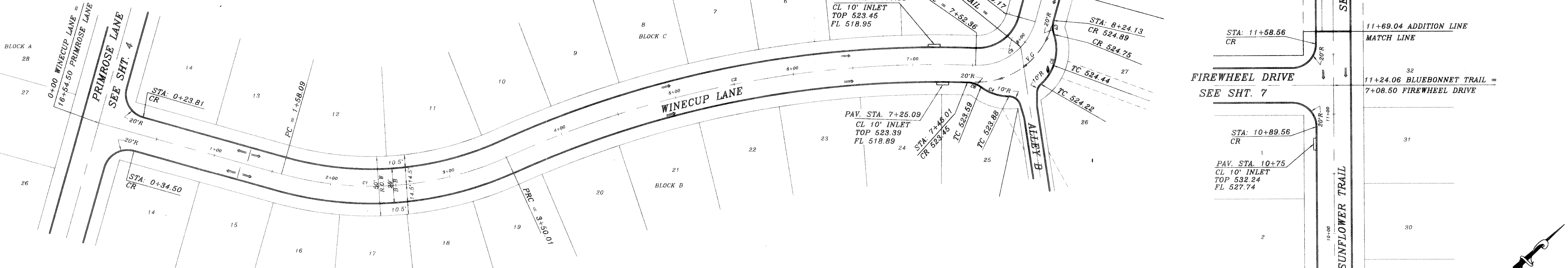


CURVE	RADIUS	LENGTH	TANGENT	CHORD	BEARING	DELTA
C1	275.00'	191.92'	100.05'	188.05'	N24°14'26" E	39°59'09"
C2	874.21'	402.36'	204.81'	398.82'	S17°25'58" W	26°22'15"
C3	50.00'	66.80'	39.45'	61.94'	N07°39'23" W	76°32'57"
C4	39.50'	24.93'	12.90'	24.52'	N46°56'05" E	36°09'34"
C5	39.50'	45.52'	25.66'	43.04'	N48°37'13" W	66°01'24"
C6	20.00'	12.15'	6.27'	11.97'	S47°36'30" W	34°48'45"
C7	20.00'	11.77'	6.06'	11.60'	S65°46'47" E	35°42'17"



B.M.
TOP OF EXIST. SAN. SEW. M.H.
LOCATED AT PAV. STA. (0+25), 4' LT.
WILDFLOWER WAY
ELEVATION = 515.72

B.M.
TOP OF EXIST. M.H. AT WEST
CORNER OF LOT 20, BLOCK A. OF
HIGHLAND MEADOWS
ELEVATION = 514.85

REVISION DESCRIPTION	DATE	SCALE	DESIGN	DRAWN
REV PER 2nd CITY REVIEW	11/4/95	1" = 40'	H.L.E.	
REV PER CITY REVIEW	8/14/95	1" = 6'		
	7/10/96			

HAROLD L. EVANS
CONSULTING ENGINEER
2331 GUS THOMASSON ROAD, SUITE 102
DALLAS, TEXAS 75228. (214) 328-8133

PROPOSED PAVING
WINECUP LANE & SUNFLOWER TRAIL
HIGHLAND MEADOWS NO. 1
CITY OF ROCKWALL

SHEET NO.
5
JOB NO.
9563