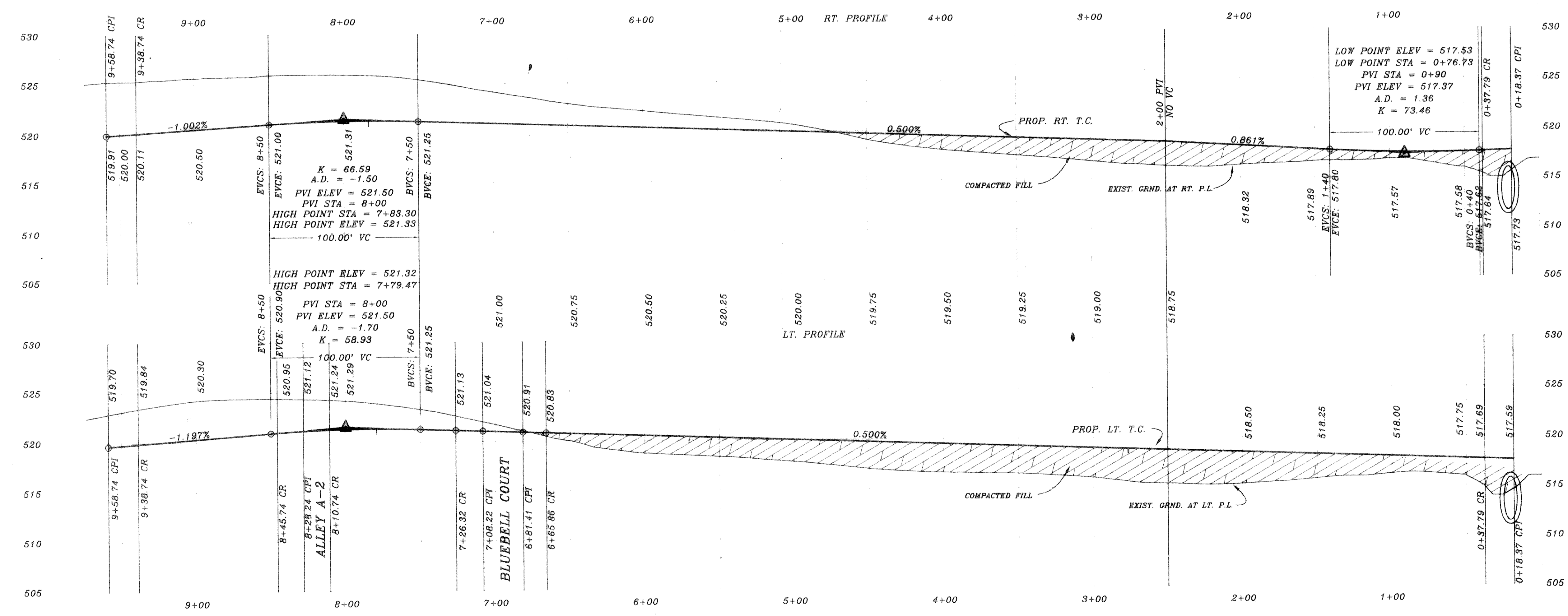
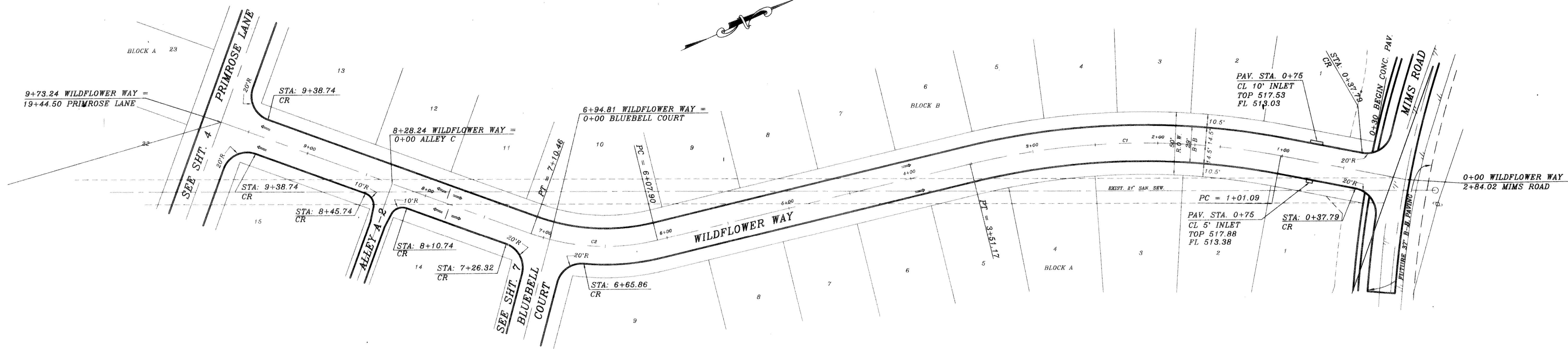


CURVE	RADIUS	LENGTH	TANGENT	CHORD	BEARING	DELTA
C1	584.21'	250.08'	128.38'	248.18'	322°55'06" W	24°31'36"
C2	175.00'	102.56'	52.80'	101.10'	N27°26'39" E	33°34'44"



HAROLD L. EVANS
 CONSULTING ENGINEER
 P.O. BOX 28355
 2331 GUS THOMASSON ROAD, SUITE 102
 DALLAS, TEXAS 75228 (214) 328-8133
 8/14/95
 11-95

B.M.
 TOP OF EXIST SAN SEW M.H.
 LOCATED AT PAV. STA. -(0+25), 4' LT.
 WILDFLOWER WAY
 ELEVATION = 515.72
 B.M.
 TOP OF EXIST M.H. AT WEST
 CORNER OF LOT 20, BLOCK A, OF
 HIGHLAND MEADOWS
 ELEVATION = 514.85

REVISION DESCRIPTION DATE 7/10/95	SCALE 1" = 40' 1" = 8'	DESIGN H.L.E.	DRAWN	SHEET NO. 3 23 JOB NO. 9563
---	------------------------------	------------------	-------	---

PROPOSED PAVING
 WILDFLOWER WAY
 HIGHLAND MEADOWS NO.1
 CITY OF ROCKWALL