

- GENERAL NOTES:
1. ALL WORK WILL MEET MINIMUM SPECIFICATIONS AS SET FORTH BY THE CITY OF ROCKWALL.
 2. WATER LINES SHALL BE CLASS 150 CAST IRON PIPE WITH STABLE RUBBER GASKETS JOINTS. MINIMUM COVER OF 42-INCHES BELOW FINISHED GRADE. ALL FITTINGS SHALL BE CAST IRON, CLASS D, WITH MECHANICAL JOINTS.
 3. ALL LOTS SHALL HAVE 3/4-INCH COPPER DEADHEAD SERVICES AND 1/2-INCH COPPER LATERALS.
 4. ALL SANITARY SEWER LINES SHALL BE VITRIFIED CLAY PIPE AS REQUIRED BY THE CITY OF ROCKWALL.
 5. UTILITY CONNECTIONS TO EACH LOT SHALL BE MADE AS FOLLOWS: WATER SERVICE SHALL BE 5 FEET FROM PROPERTY LINE AND SANITARY SEWER CONNECTION SHALL BE AT LOT CENTER LINE, FRONT OR BACK OR AS SHOWN HEREON. VARIATIONS FROM TYPICAL UTILITY CONNECTION SHALL BE TURNED INTO CITY OF ROCKWALL ON AS BUILT PLANS UPON COMPLETION.

TBM: 60D NAIL IN WEST SIDE OF 30" PECAN TREE, 90' NORTH OF NORTHWEST CORNER: ELEVATION: 488.
 TBM: 60D NAIL IN EAST SIDE OF POWER POLE 2' SOUTH OF NORTHEAST PROPERTY CORNER: ELEVATION: 1507
 TBM: SOUTH RIM OF MANHOLE AT INTERSECTION OF ALAMO STREET AND BOURN AVE: ELEVATION: 589

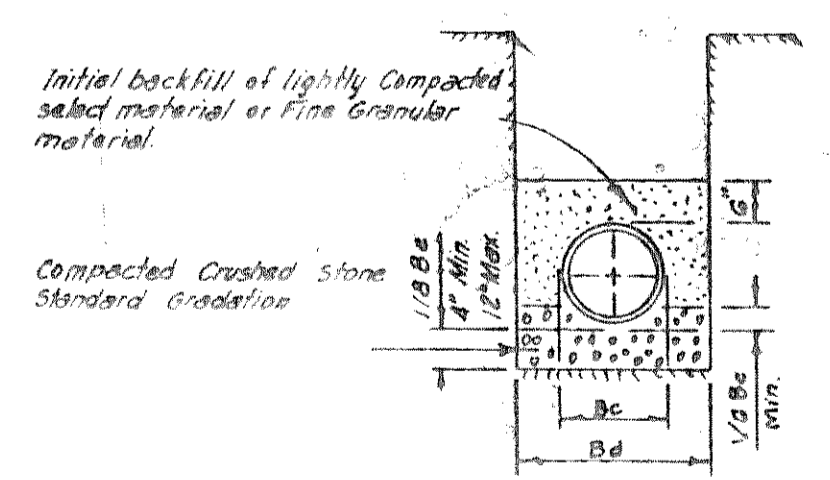
501 NASH
 PHILLIPS SERIES

NO.	CURVE DATA		OUTER
	INNER	Q	
1	Δ 17.47	4.157	90' 30" 10'
	Δ 17.47	4.157	67.92
	Δ 17.47	4.157	71.1
	Δ 17.47	4.157	107.1
2	Δ 21.28	1.107	133' 21" 31'
	Δ 21.28	1.107	133' 21" 31'
	Δ 21.28	1.107	133' 21" 31'
	Δ 21.28	1.107	133' 21" 31'
3	Δ 27.02	1.34	30' 09" 51'
	Δ 27.02	1.34	30' 09" 51'
	Δ 27.02	1.34	30' 09" 51'
	Δ 27.02	1.34	30' 09" 51'

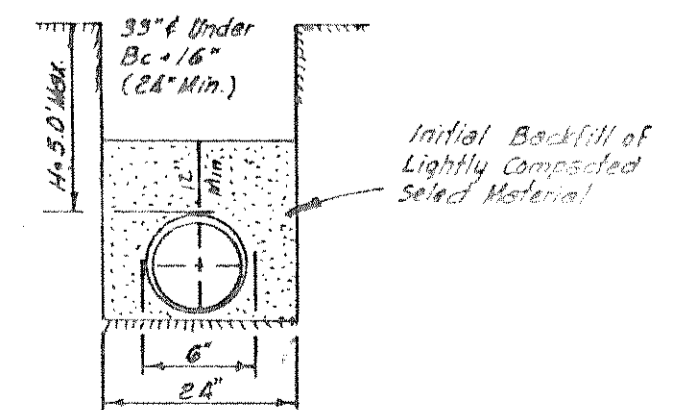


Note Variations of Utilities as shown hereon. See General Notes.

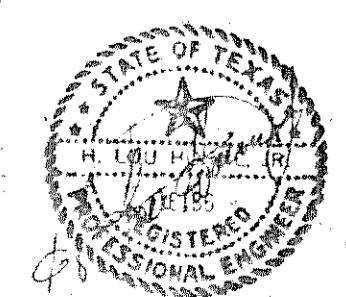
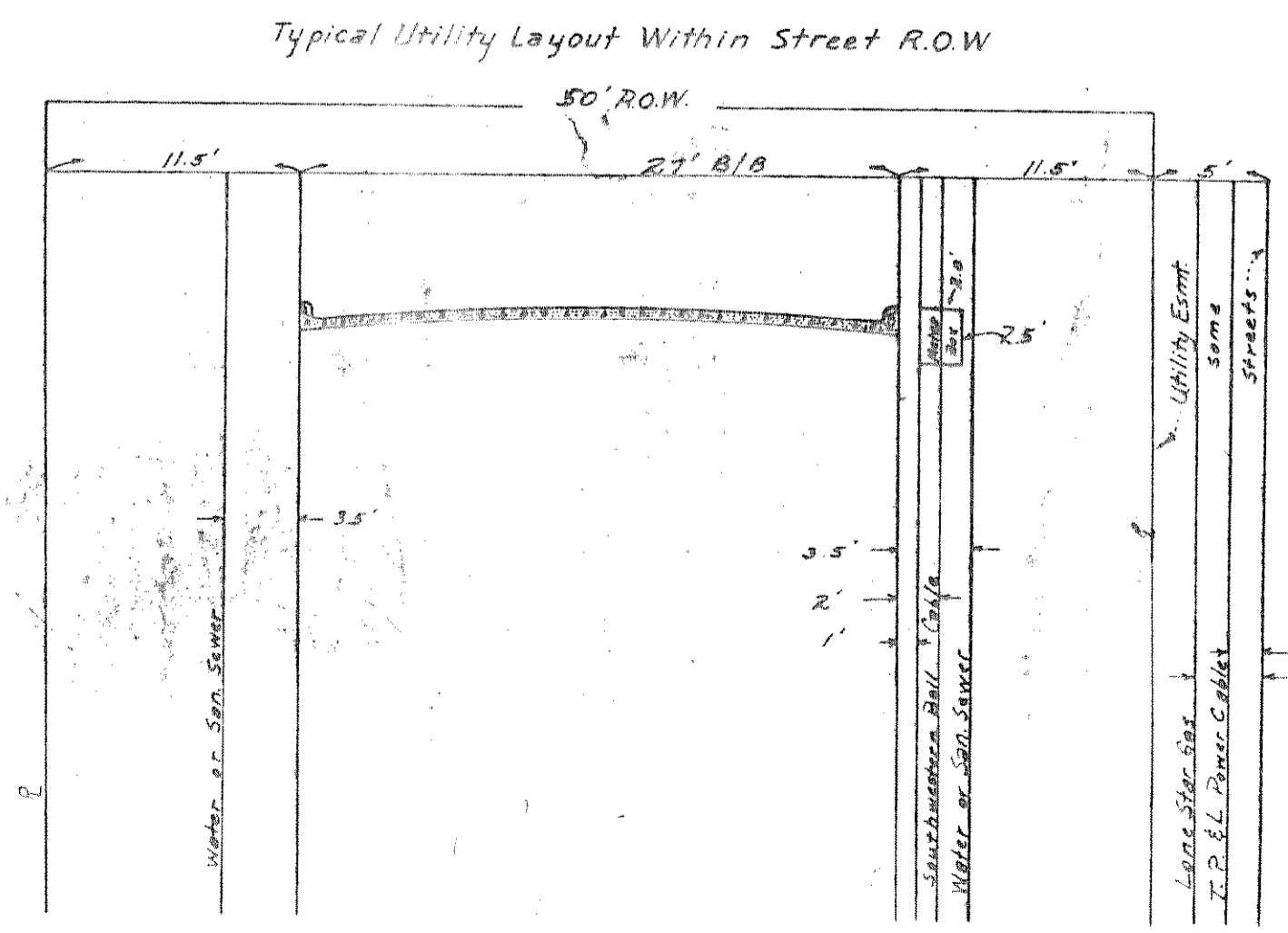
WATER —
SEWER —



CLASS 'A' EMBEDMENT FOR WATER LINES



CLASS 'C' EMBEDMENT FOR SANITARY SEWER LINES L.F. 15



HIGH RIDGE ESTATES				
WATER & SANITARY SEWER PLANS				
H. LOU HORNE JR. ENGINEER				
CITY OF ROCKWALL, TEXAS				
DESIGN	DATE	SCALE	NOTES	FILE NUMBER
H. LOU HORNE JR. CONSULT. ENG.	6/72	1"=100'		

1/A.