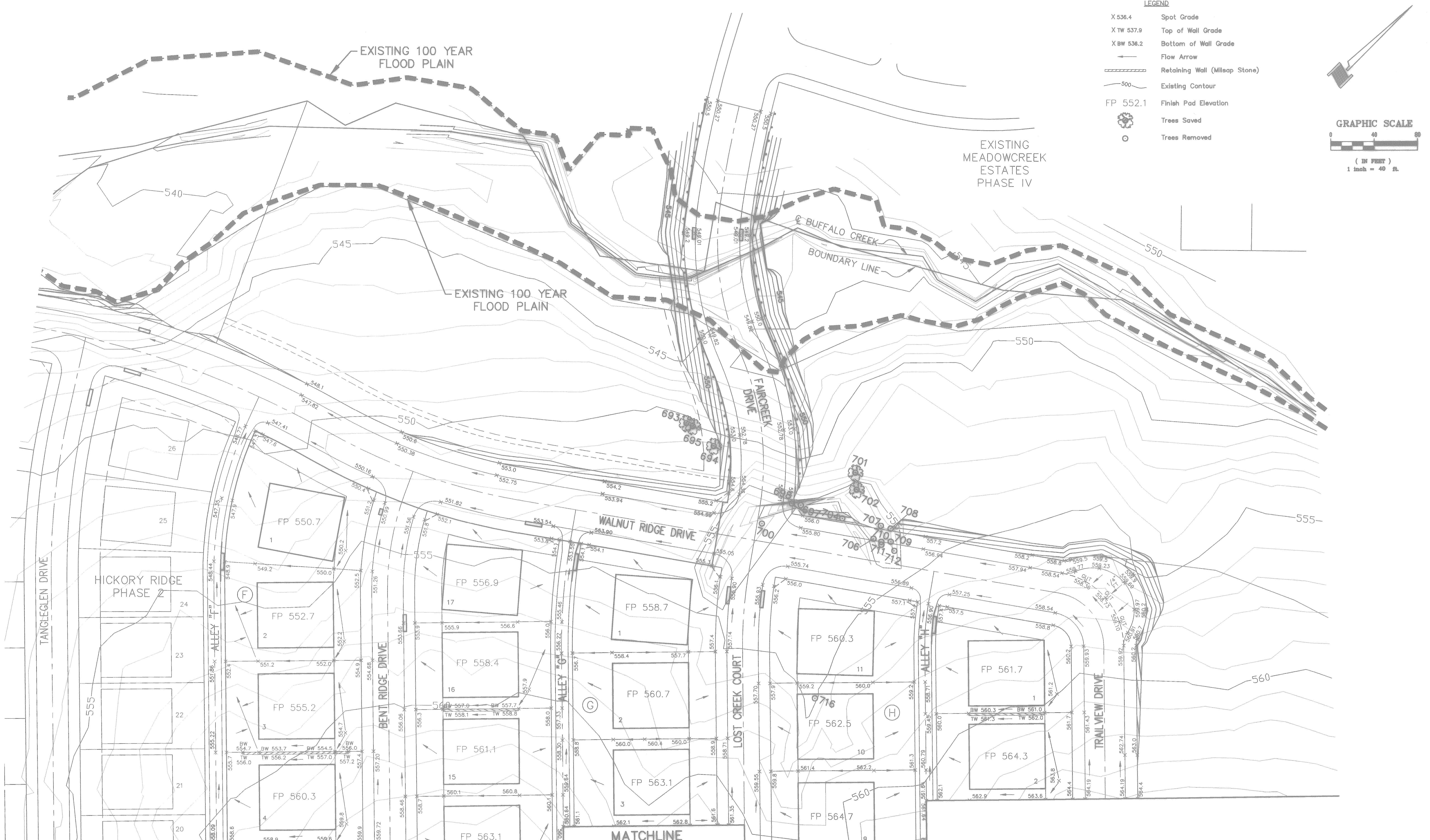
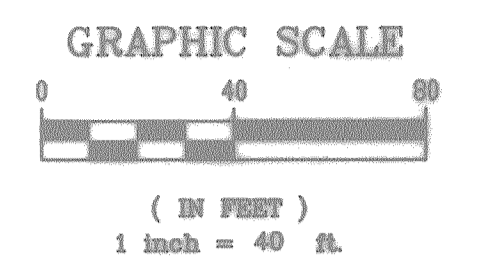
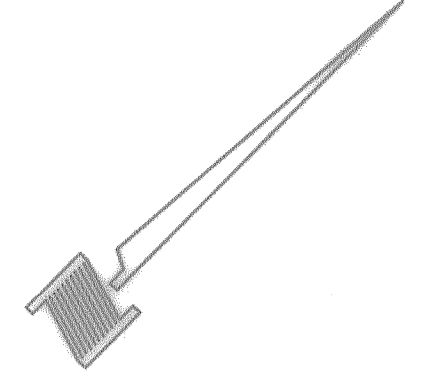


LEGEND

- X 536.4 Spot Grade
- X TW 537.9 Top of Wall Grade
- X BW 536.2 Bottom of Wall Grade
- Flow Arrow
- ▬▬▬ Retaining Wall (Misc Stone)
- 500— Existing Contour
- FP 552.1 Finish Pad Elevation
- ⊕ Trees Saved
- Trees Removed



MATCHLINE SEE PLATE NO. 21

MATCHLINE SEE PLATE NO. 21

BENCHMARK:
SQUARE CUT ON TOP OF HEADWALL AT THE MOST NORTHERLY
CORNER OF BRIDGE, NORTHEASTERLY SIDE OF FM 205,
1680'± NORTHWEST OF CL OF MIMS ROAD.
ELEV = 529.11

BENCHMARK:
CITY OF ROCKWALL, TEXAS CONTROL MONUMENT #929. TOP OF
HEADWALL IN NORTHWEST CORNER OF BRIDGE OVER SQUABBLE
CREEK, SOUTHWESTERLY SIDE OF FM 205.
ELEV = 524.55

RECORD DRAWINGS AUGUST 19, 2002
NOTE: THE INTENT OF THE OWNER AND
ENGINEER WAS TO CONSTRUCT THE
IMPROVEMENTS ACCORDING TO THESE
PLANS AS APPROVED BY THE CITY OF
ROCKWALL. THE LINES AND GRADES
WERE SET ON THE GROUND FOR
CONSTRUCTION ACCORDING TO SAID
PLANS. WE ARE NOT AWARE OF ANY
CHANGES OR REVISIONS TO THESE PLANS
DURING CONSTRUCTION EXCEPT AS
NOTED ON THE PLANS.

PRELIMINARY
FOR INSPECTION PURPOSES ONLY, AND IN NO
WAY OFFICIAL OR APPROVED FOR CONSTRUCTION

NO.	DATE	BY	REVISION

TREE SURVEY PLANS
HICKORY RIDGE PHASE THREE
J.R. Johnson, Abs. No. 128 ~ A. Johnson, Abs. No. 123
W.H. Barnes, Abs. No. 26 ~ W.H. Baird, Abs. No. 25
CITY OF ROCKWALL, ROCKWALL COUNTY, TEXAS

PAPAGOLOS DEVELOPMENT COMPANY

DESIGN	DRAWN	CHECKED	DATE	SCALE	JOB	SHEET
MMP			MAR 2001	1"=40'	99066	1 / 2