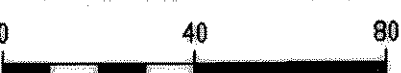


GRAPHIC SCALE



(IN FEET)
1 inch = 40 ft.

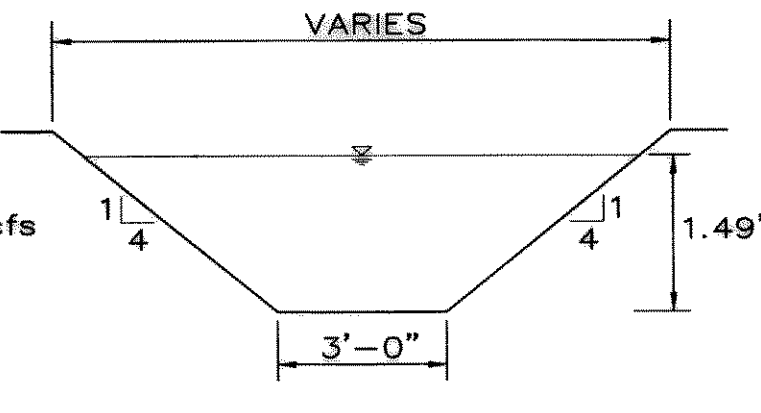
Paving Station 28+75.84 North Side of Trailview Drive
3" Brass Disk on Northeast Corner of Curb Inlet
State Plane Coordinates:
Northing = 7,016,552.633
Easting = 2,602,495.048
Elevation = 569.02'
Datum = TEXAS, NORTH CENTRAL ZONE, NAD83(HGPN)

GRAPHIC SCALE



(IN FEET)
1 inch = 40 ft.

Q100 = 36.4 cfs
Q50 = 0.50%
Q25 = 1.49'
Q10 = 2.74 fps



DITCH SECTION A-A
NTS

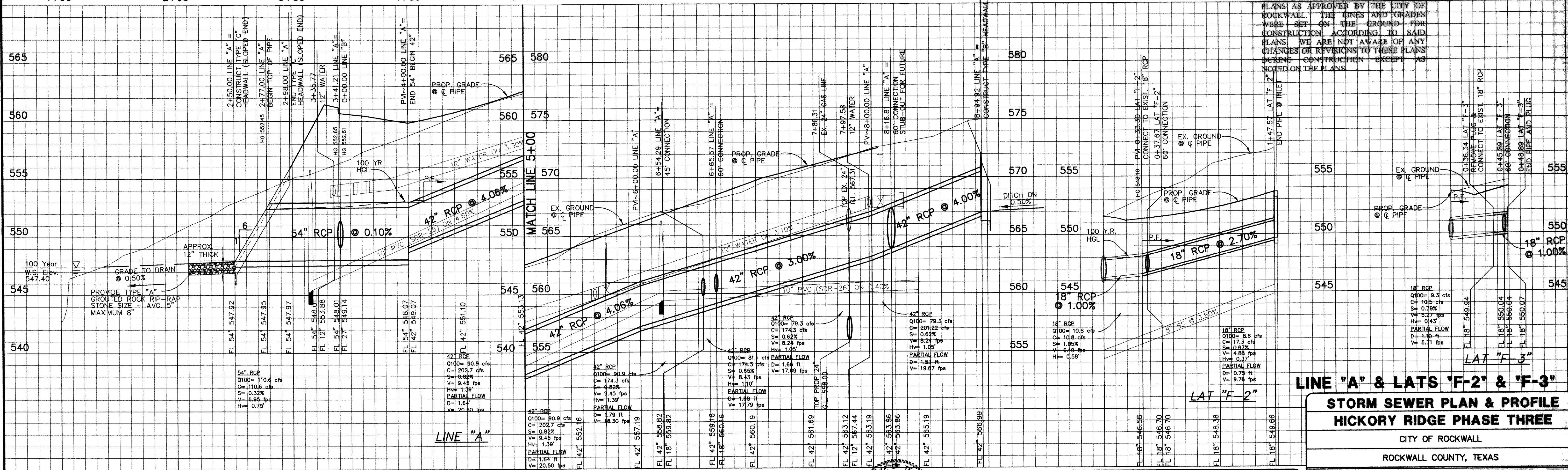
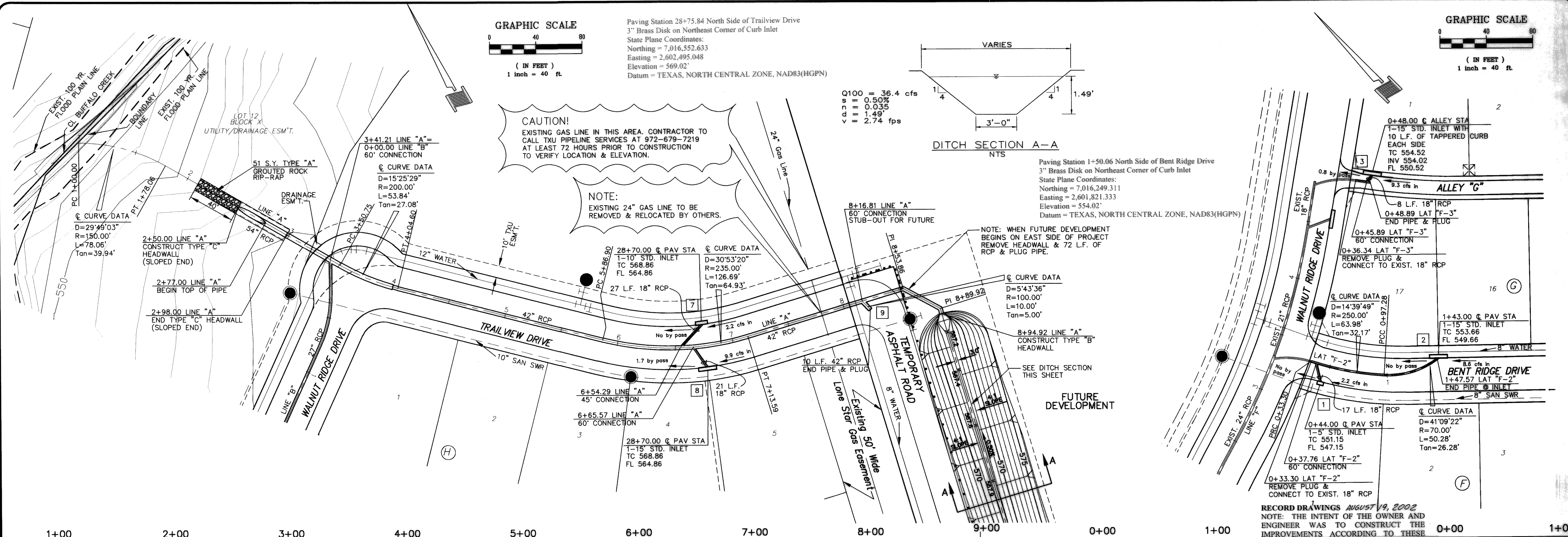
Paving Station 1+50.06 North Side of Bent Ridge Drive
3" Brass Disk on Northeast Corner of Curb Inlet
State Plane Coordinates:
Northing = 7,016,249.311
Easting = 2,601,821.333
Elevation = 554.02'
Datum = TEXAS, NORTH CENTRAL ZONE, NAD83(HGPN)

CAUTION!
EXISTING GAS LINE IN THIS AREA. CONTRACTOR TO CALL TXU PIPELINE SERVICES AT 972-679-7219 AT LEAST 72 HOURS PRIOR TO CONSTRUCTION TO VERIFY LOCATION & ELEVATION.

NOTE:
EXISTING 24" GAS LINE TO BE REMOVED & RELOCATED BY OTHERS.

NOTE: WHEN FUTURE DEVELOPMENT BEGINS ON EAST SIDE OF PROJECT REMOVE HEADWALL & 72 L.F. OF RCP & PLUG PIPE.

SEE DITCH SECTION THIS SHEET
FUTURE DEVELOPMENT



RECORD DRAWINGS AUGUST 19, 2002
NOTE: THE INTENT OF THE OWNER AND ENGINEER WAS TO CONSTRUCT THE IMPROVEMENTS ACCORDING TO THESE PLANS AS APPROVED BY THE CITY OF ROCKWALL. THE LINES AND GRADES WERE SET ON THE GROUND FOR CONSTRUCTION ACCORDING TO SAID PLANS. WE ARE NOT AWARE OF ANY CHANGES OR REVISIONS TO THESE PLANS DURING CONSTRUCTION EXCEPT AS NOTED ON THE PLANS.

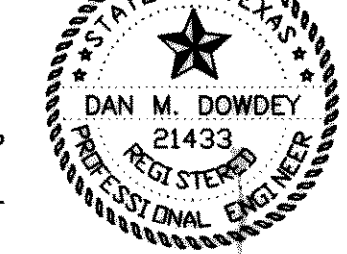
LINE 'A' & LATS 'F-2' & 'F-3'
STORM SEWER PLAN & PROFILE
HICKORY RIDGE PHASE THREE

CITY OF ROCKWALL
ROCKWALL COUNTY, TEXAS

DOWDEY, ANDERSON & ASSOCIATES, INC.
5225 VILLAGE CREEK DR., STE. 200 (972) 931-0694 PLANO, TEXAS

DESIGN	DRAWN	CHECKED	DATE	SCALE	JOB	SHEET
RR	RR	DMD	MAR 2001	H: 1"=40' V: 1"=4'	99066	1/2

THESE CONSTRUCTION PLANS WERE PREPARED UNDER THE RESPONSIBLE SUPERVISION OF DAN M. DOWDEY REGISTERED PROFESSIONAL ENGINEER No. 21433



THE SEAL APPEARING ON THIS DOCUMENT WAS AUTHORIZED BY DAN M. DOWDEY P.E. #21433

NO.	DATE	BY	REVISION

BENCHMARK:
SQUARE CUT ON TOP OF HEADWALL AT THE MOST NORTHERLY CORNER OF BRIDGE. NORTHEASTERLY SIDE OF FM 205. 1680' NORTHWEST OF CL OF MIMS ROAD. ELEV = 529.11

BENCHMARK:
CITY OF ROCKWALL, TEXAS CONTROL MONUMENT #929. TOP OF HEADWALL IN NORTHWEST CORNER OF BRIDGE OVER SQUABBLE CREEK. SOUTHWESTERLY SIDE OF FM 205. ELEV = 524.55