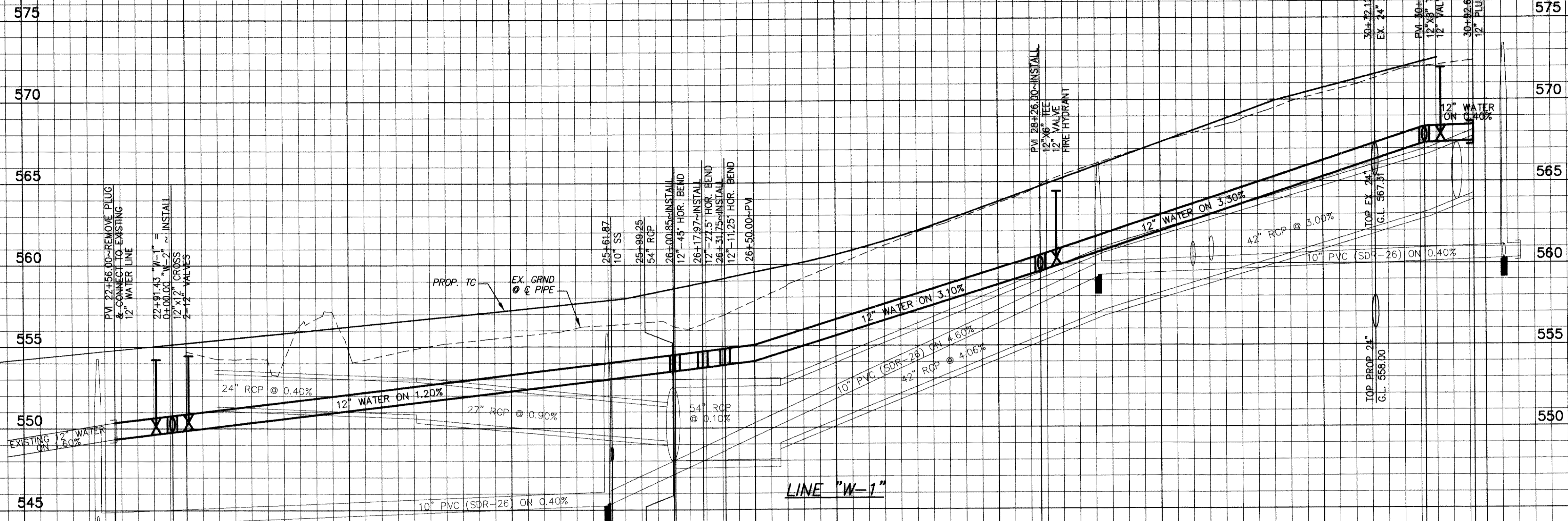
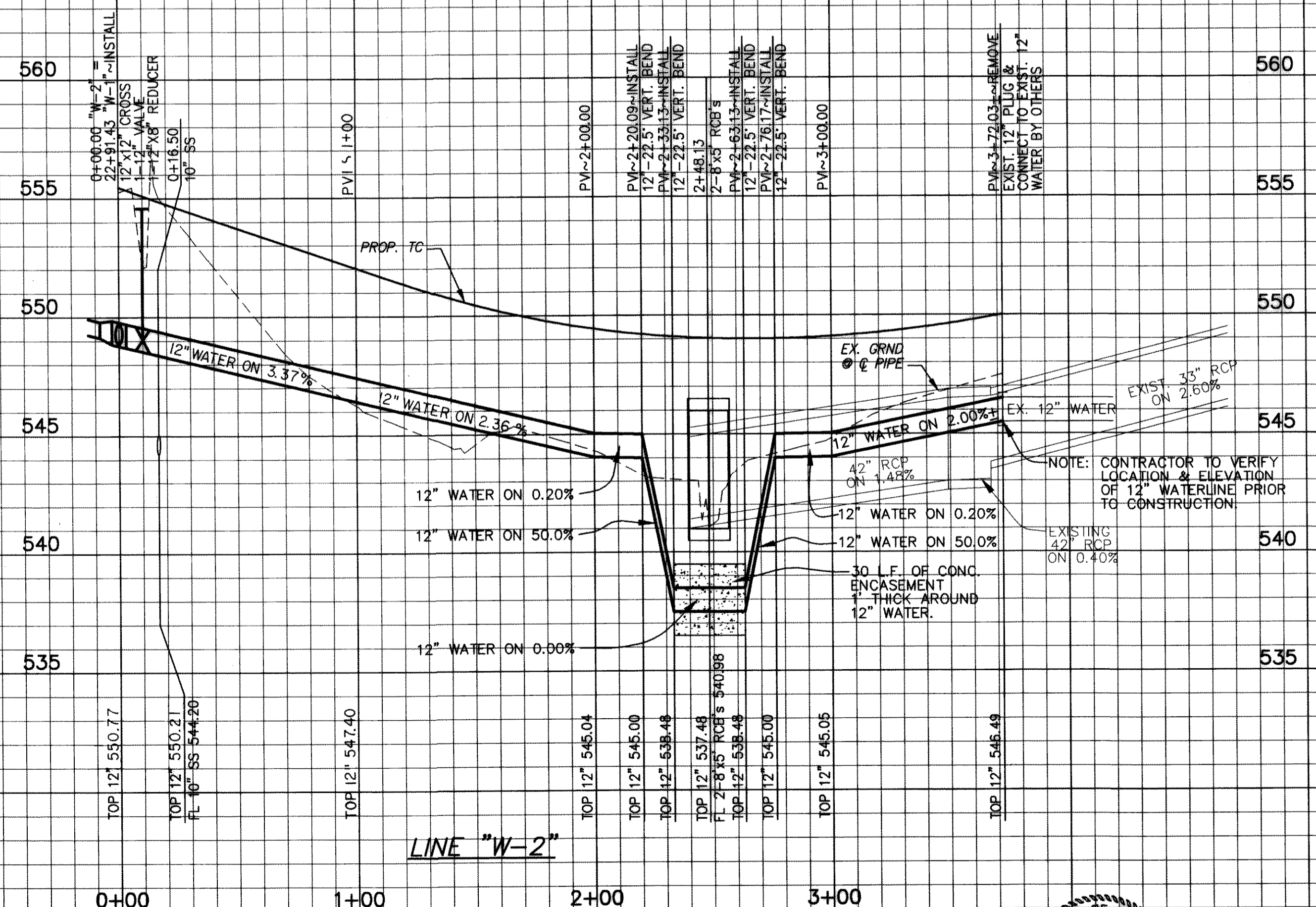


23+00 24+00 25+00 26+00 27+00 28+00 29+00 30+00 31+00

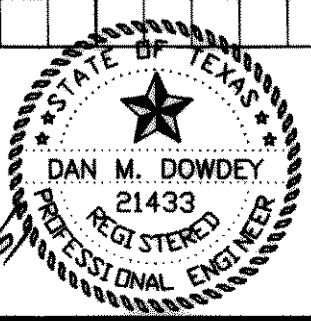


TOP 12" 550.34	TOP 12" 549.77	TOP 12" 551.47	TOP 12" 552.07	TOP 12" 552.67	TOP 12" 553.27	TOP 12" 553.87	TOP 12" 554.01	FL 10" SS 546.14	TOP 12" 554.48	FL 54" 548.01	TOP 12" 554.48	TOP 12" 554.68	TOP 12" 554.85	TOP 12" 555.07	TOP 12" 556.62	TOP 12" 558.17	TOP 12" 559.72	TOP 12" 560.53	TOP 12" 561.32	TOP 12" 562.97	TOP 12" 564.62	TOP 12" 566.27	TOP 12" 567.92	TOP 12" 568.34	TOP 12" 568.46
----------------	----------------	----------------	----------------	----------------	----------------	----------------	----------------	------------------	----------------	---------------	----------------	----------------	----------------	----------------	----------------	----------------	----------------	----------------	----------------	----------------	----------------	----------------	----------------	----------------	----------------



TOP 12" 550.17	TOP 12" 550.21	FL 10" SS 544.20	TOP 12" 547.40	TOP 12" 545.04	TOP 12" 545.00	TOP 12" 538.48	TOP 12" 537.48	FL 2" FIBERGLASS RCP'S 540.86	TOP 12" 538.48	TOP 12" 545.00	TOP 12" 545.05	TOP 12" 545.49
----------------	----------------	------------------	----------------	----------------	----------------	----------------	----------------	-------------------------------	----------------	----------------	----------------	----------------

RECORD DRAWINGS AUGUST 19, 2002
 NOTE: THE INTENT OF THE OWNER AND ENGINEER WAS TO CONSTRUCT THE IMPROVEMENTS ACCORDING TO THESE PLANS AS APPROVED BY THE CITY OF ROCKWALL. THE LINES AND GRADES WERE SET ON THE GROUND FOR CONSTRUCTION ACCORDING TO SAID PLANS. WE ARE NOT AWARE OF ANY CHANGES OR REVISION TO THESE PLANS DURING CONSTRUCTION EXCEPT AS NOTED ON THE PLANS.



THESE CONSTRUCTION PLANS WERE PREPARED UNDER THE RESPONSIBLE SUPERVISION OF DAN M. DOWDEY REGISTERED PROFESSIONAL ENGINEER No. 21433.

THE SEAL APPEARING ON THIS DOCUMENT WAS AUTHORIZED BY DAN M. DOWDEY P.E. # 21433

BENCHMARK: SQUARE CUT ON TOP OF HEADWALL AT THE MOST NORTHERLY CORNER OF BRIDGE. NORTHEASTERLY SIDE OF FM 205. 1680± NORTHWEST OF CL OF MIMS ROAD. ELEV = 529.11

BENCHMARK: CITY OF ROCKWALL, TEXAS CONTROL MONUMENT #929. TOP OF HEADWALL IN NORTHWEST CORNER OF BRIDGE OVER SQUABBLE CREEK. SOUTHWESTERLY SIDE OF FM 205. ELEV = 524.55

LINES 'W-1' & 'W-2'
12" WATER LINE PROFILES
HICKORY RIDGE PHASE THREE
 CITY OF ROCKWALL
 ROCKWALL COUNTY, TEXAS
DOWDEY, ANDERSON & ASSOCIATES, INC.
 5225 VILLAGE CREEK DR., STE 200. (972) 931-0694 PLANO, TEXAS

DESIGN	DRAWN	CHECKED	DATE	SCALE	JOB	SHEET
JDS	MPG	DD	MAR 2001	1" = 40' 1" = 4'	99-066	1

NO.	DATE	BY	REVISION