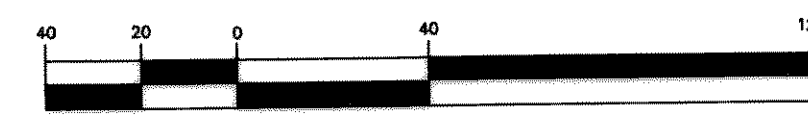
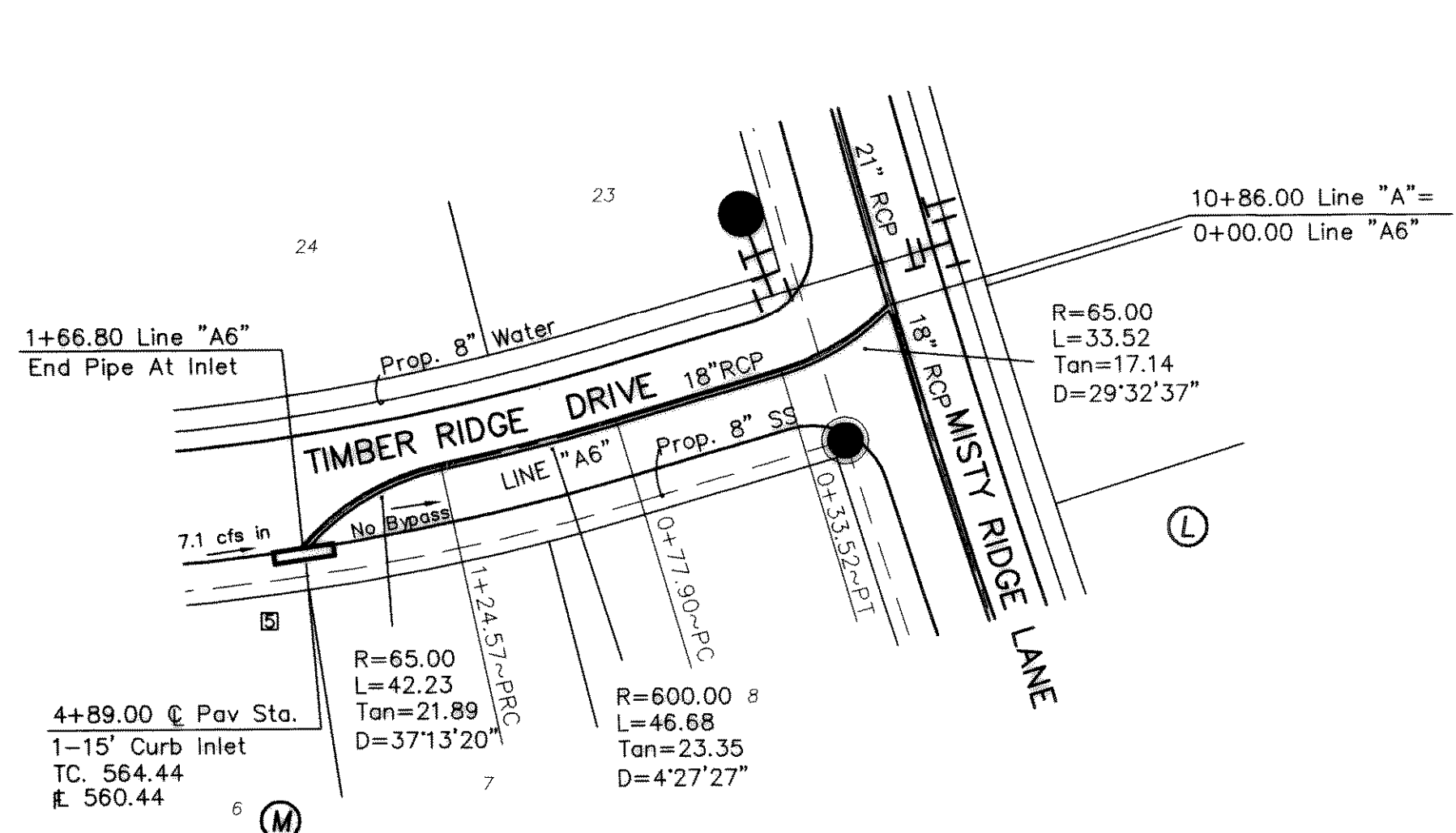
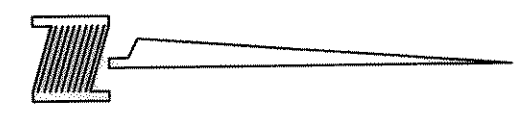


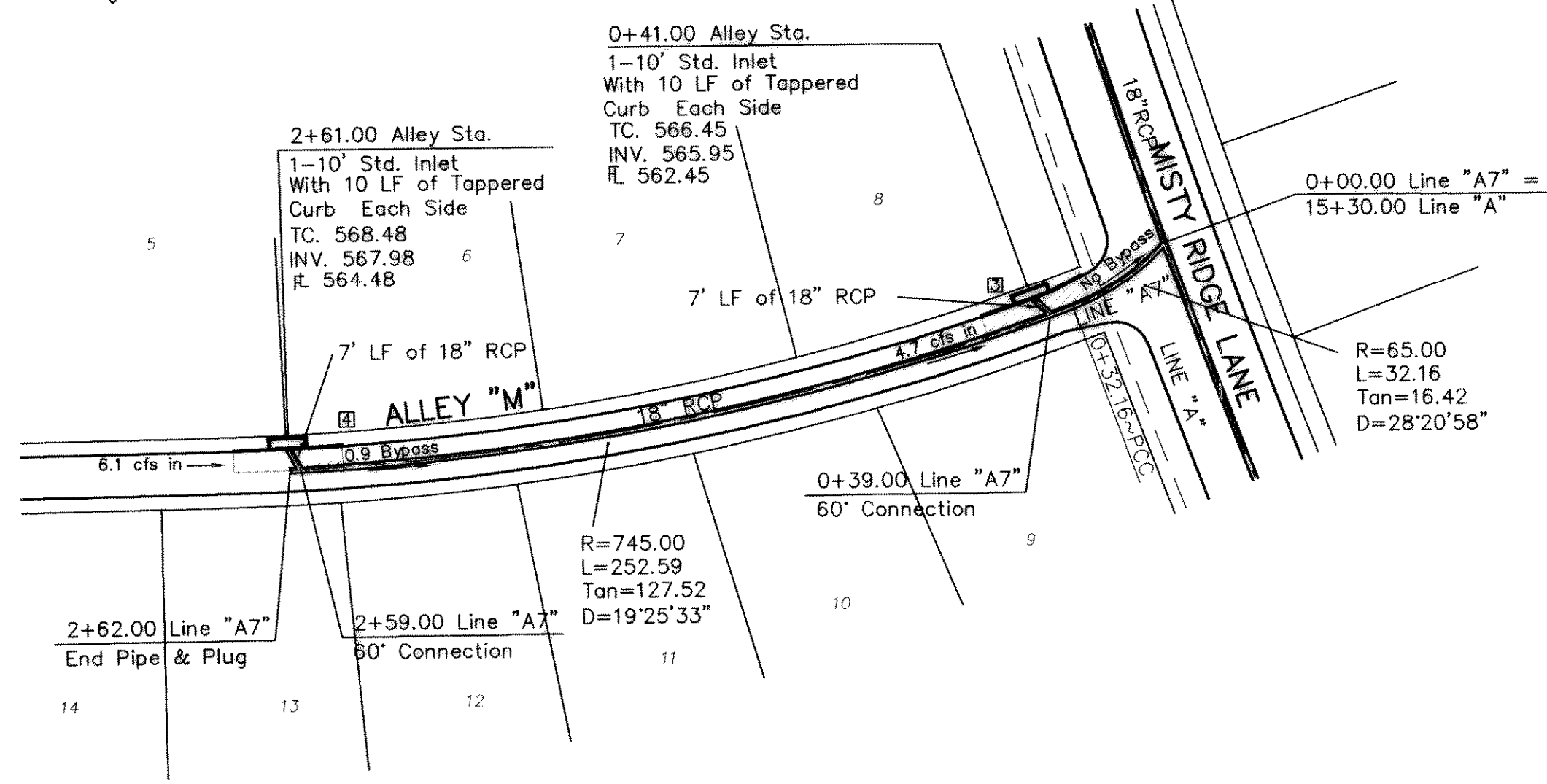
GRAPHIC SCALE



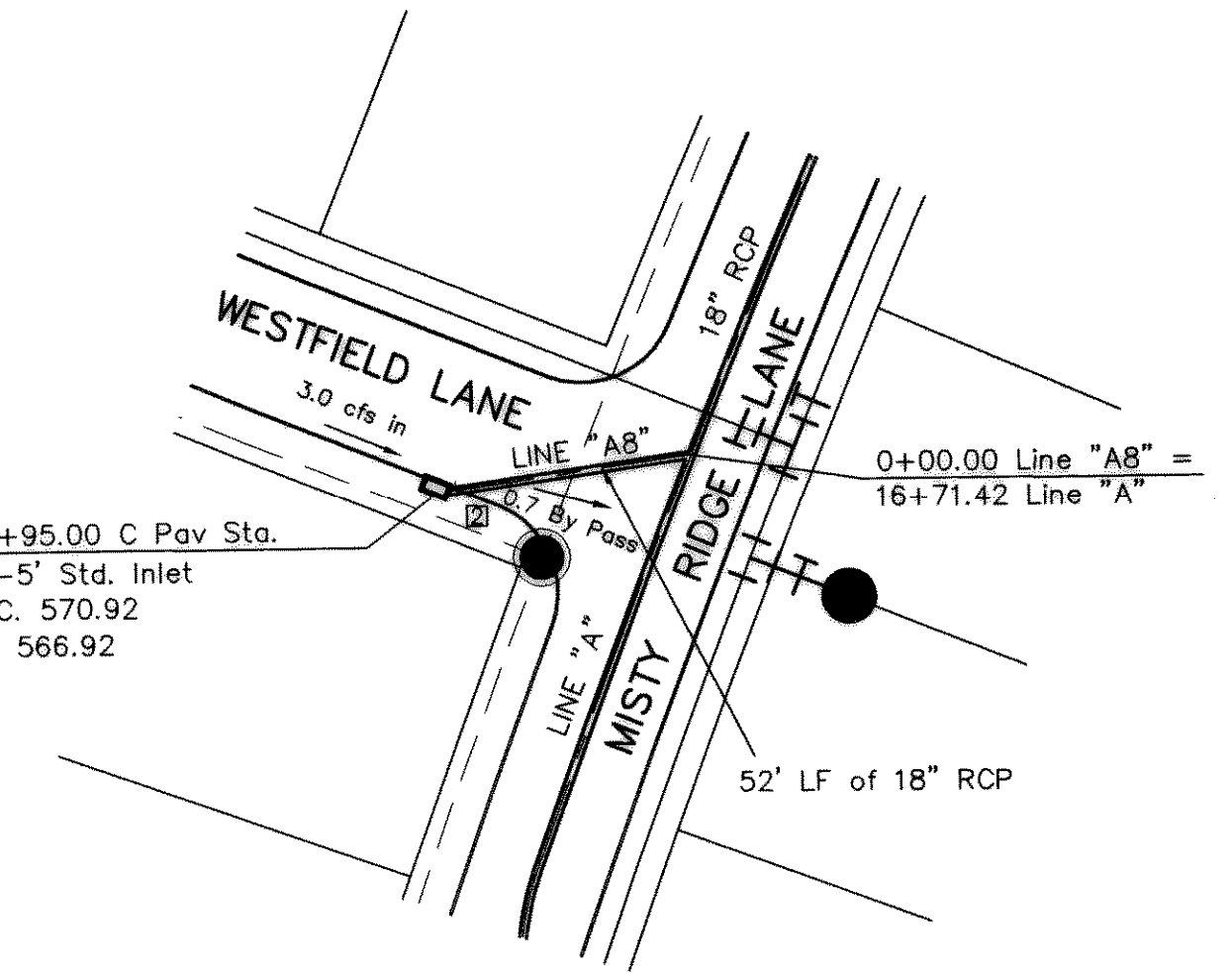
( IN FEET )  
1 inch = 40 ft.



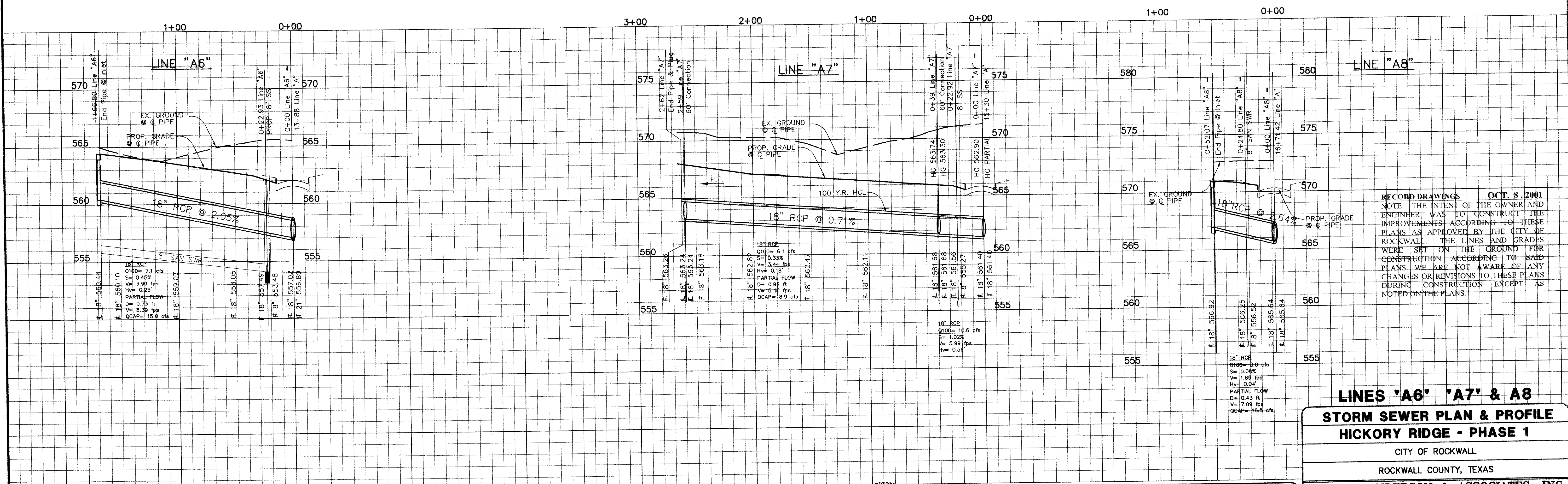
LINE "A6"



LINE "A7"



LINE "A8"



RECORD DRAWINGS OCT. 8, 2001  
NOTE: THE INTENT OF THE OWNER AND ENGINEER WAS TO CONSTRUCT THE IMPROVEMENTS ACCORDING TO THESE PLANS AS APPROVED BY THE CITY OF ROCKWALL. THE LINES AND GRADES WERE SET ON THE GROUND FOR CONSTRUCTION ACCORDING TO SAID PLANS. WE ARE NOT AWARE OF ANY CHANGES OR REVISIONS TO THESE PLANS DURING CONSTRUCTION EXCEPT AS NOTED ON THE PLANS.

**LINES "A6" "A7" & A8**  
**STORM SEWER PLAN & PROFILE**  
**HICKORY RIDGE - PHASE 1**

CITY OF ROCKWALL  
ROCKWALL COUNTY, TEXAS

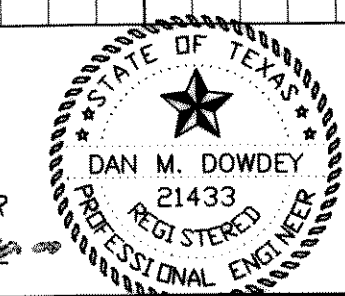
**DOWDEY, ANDERSON & ASSOCIATES, INC.**  
5225 VILLAGE CREEK DR., STE. 200 (972) 931-0694 PLANO, TEXAS

DESIGN	DRAWN	CHECKED	DATE	SCALE	JOB	SHEET
JDS	RR	DD	09-00	H: 1"=40' V: 1"=4'	99-066	6

BENCHMARK:  
SQUARE CUT ON TOP OF HEADWALL AT THE MOST NORTHERLY CORNER OF BRIDGE, NORTHEASTERLY SIDE OF FM 205. 1680'± NORTHWEST OF CL OF MIMS ROAD. ELEV = 529.11

BENCHMARK:  
CITY OF ROCKWALL, TEXAS CONTROL MONUMENT #929. TOP OF HEADWALL IN NORTHWEST CORNER OF BRIDGE OVER SQUABBLE CREEK. SOUTHWESTERLY SIDE OF FM 205. ELEV = 524.55

THESE CONSTRUCTION PLANS WERE PREPARED UNDER THE RESPONSIBLE SUPERVISION OF DAN M. DOWDEY REGISTERED PROFESSIONAL ENGINEER No. 21433



THE SEAL APPEARING ON THIS DOCUMENT WAS AUTHORIZED BY DAN M. DOWDEY P.E. #21433

NO.	DATE	BY	REVISION