

**CAUTION!!!**

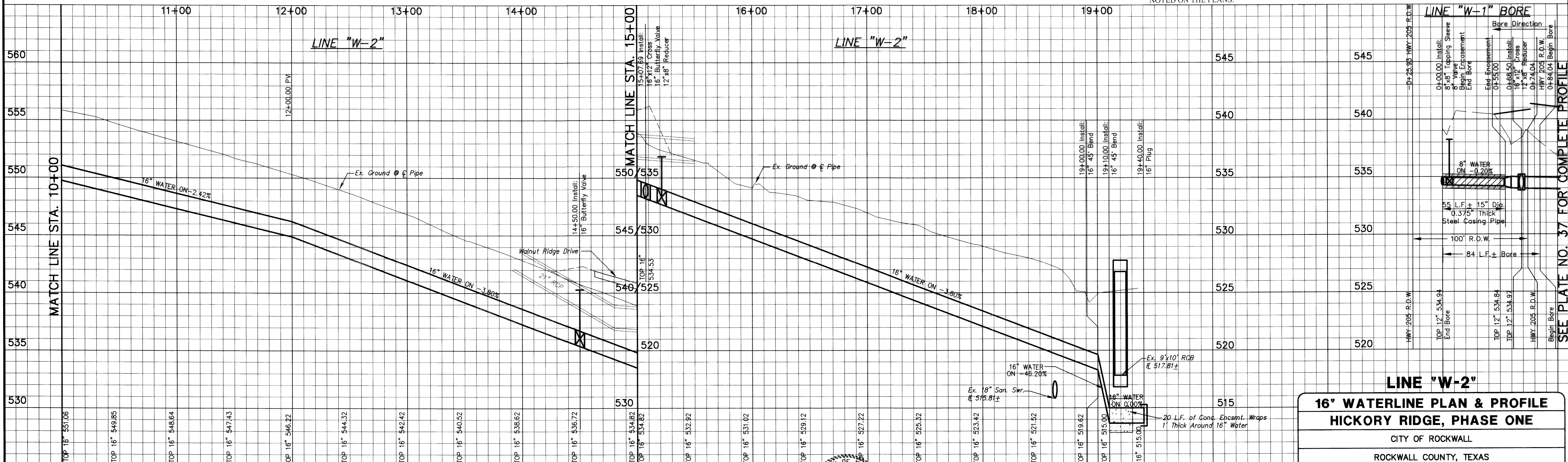
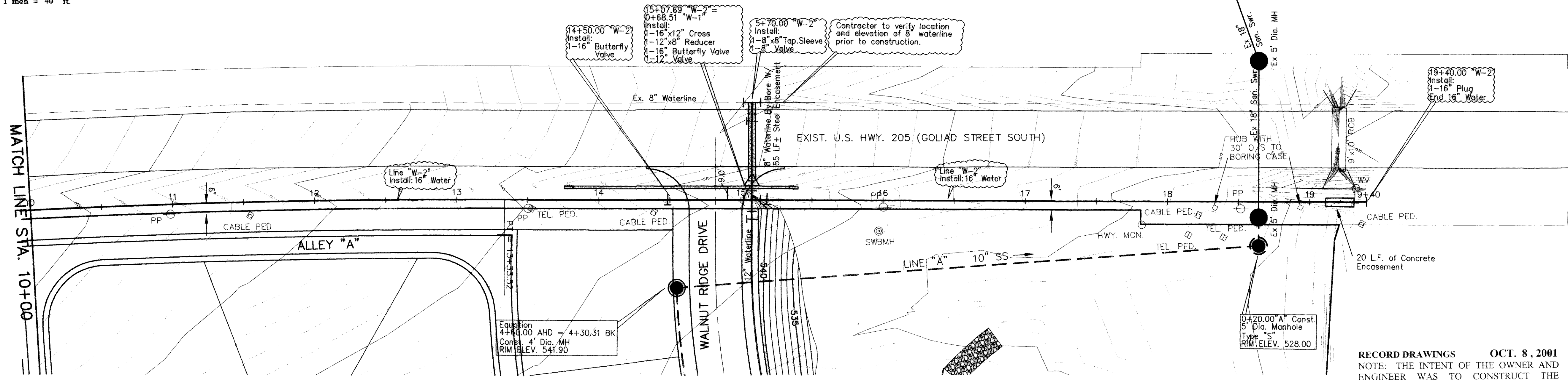
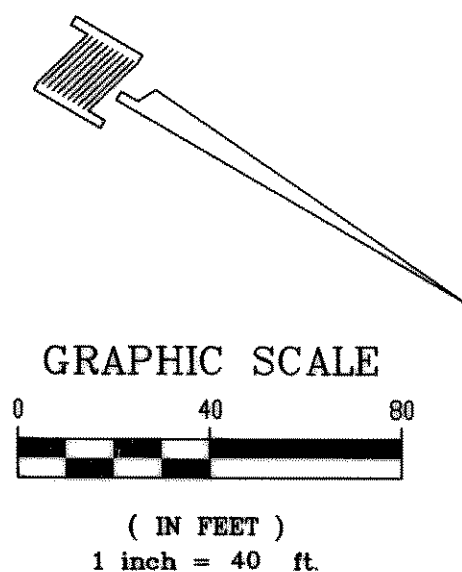
**UNDERGROUND UTILITIES**

EXISTING UTILITIES AND UNDERGROUND FACILITIES INDICATED ON THESE PLANS HAVE BEEN LOCATED FROM REFERENCE INFORMATION SUPPLIED BY VARIOUS OWNERS OF THE FACILITIES. THE ENGINEER DOES NOT ACCEPT THE RESPONSIBILITY FOR THE UTILITY LOCATIONS SHOWN. IT SHALL BE THE RESPONSIBILITY OF THE CONTRACTOR TO VERIFY BOTH HORIZONTALLY AND VERTICALLY THE LOCATION OF ALL EXISTING UTILITIES AND UNDERGROUND FACILITIES PRIOR TO CONSTRUCTION. TO TAKE NECESSARY PRECAUTIONS IN ORDER TO PROTECT ALL FACILITIES ENCOUNTERED, AND TO NOTIFY THE ENGINEER PROMPTLY OF ALL CONFLICTS OF THE WORK WITH EXISTING FACILITIES. THE CONTRACTOR SHALL PRESERVE AND PROTECT ALL EXISTING UTILITIES FROM DAMAGE DURING CONSTRUCTION. ANY DAMAGE BY THE CONTRACTOR TO EXISTING UTILITIES SHALL BE REPAIRED BY THE CONTRACTOR AT HIS EXPENSE. CONTACT ALL POSSIBLE UTILITY AND UNDERGROUND FACILITY OWNERS.

**WATER LINE GENERAL NOTES**

- UNLESS OTHERWISE NOTED, ALL MATERIAL AND CONSTRUCTION SHALL CONFORM TO THE CURRENT CITY OF ROCKWALL "STANDARDS OF DESIGN, STANDARD SPECIFICATIONS FOR CONSTRUCTION, STANDARD DETAILS FOR THE CITY OF ROCKWALL" MANUAL.
- ALL DUCTILE IRON FITTINGS SHALL BE OF THE MECHANICAL JOINT TYPE OR SLIP JOINT, EXCEPT AS NOTED, AND SHALL BE CLASS "D" OR CLASS 250 ON SIZES 12" AND SMALLER IN ACCORDANCE WITH AWWA SPECIFICATION C-111-64.
- WATER MAINS SHALL HAVE A MINIMUM COVER OF 42". WATER PIPE SHALL BE C-900 CLASS 200, 16" SHALL BE C-905 CLASS 200.
- FIRE HYDRANTS SHALL BE EITHER MUELLER, AMERICAN DARLING OR AN APPROVED EQUIVALENT CONFORMING TO THE REQUIREMENTS SET FORTH IN THE CITY OF ROCKWALL "STANDARD SPECIFICATIONS FOR CONSTRUCTION". ALL FIRE HYDRANTS SHALL BE INSTALLED WITH A 6-INCH GATE VALVE ON THE HYDRANT LEAD AND WILL BE PLACED 2 FEET - 4 FEET FROM BACK OF CURB UNLESS OTHERWISE INDICATED ON THE PLANS OR AS REQUIRED TO CLEAR SIDEWALK. DO NOT PLACE FIRE HYDRANTS IN STREET CURB RETURNS.
- FIRE HYDRANT BONNETS AND CAPS WILL BE PAINTED TO CONFORM WITH CITY SPECIFICATIONS FOR COLOR CODE AS SET FORTH IN THE "STANDARD SPECIFICATIONS FOR CONSTRUCTION".
- GATE VALVES SHALL BE MANUFACTURED BY MUELLER OR KENNEDY, OR AN APPROVED EQUIVALENT AND SHALL CONFORM TO AND SHALL BE INSTALLED ACCORDING TO THE CITY OF ROCKWALL "STANDARD SPECIFICATIONS FOR CONSTRUCTION".
- FLUSH VALVES OR AN APPROVED EQUIVALENT SHALL BE INSTALLED ON ALL DEAD-END WATER LINES AND SHALL COMPLY WITH THE CITY OF ROCKWALL STANDARD DETAILS.
- WHENEVER SANITARY SEWER MAINS ARE LOCATED IN THE STREET, IT SHALL BE PLACED 7 FEET BACK OF CURB, UNLESS OTHERWISE SHOWN ON PLANS. ALL WATER AND SANITARY SEWER MAINS SHALL HAVE A 10.0 FEET MINIMUM LATERAL SEPARATION.
- IN THE EVENT AN ITEM IS NOT COVERED IN THE CITY OF ROCKWALL "STANDARD SPECIFICATIONS FOR CONSTRUCTION", THE CITY ENGINEER'S DECISION SHALL APPLY.
- ALL STUBOUT WILL BE A MINIMUM OF 1 JOINT OF PIPE (20') PAST THE VALVE.

**RECORD DRAWINGS OCT. 8, 2001**  
 NOTE: THE INTENT OF THE OWNER AND ENGINEER WAS TO CONSTRUCT THE IMPROVEMENTS ACCORDING TO THESE PLANS AS APPROVED BY THE CITY OF ROCKWALL. THE LINES AND GRADES WERE SET ON THE GROUND FOR CONSTRUCTION ACCORDING TO SAID PLANS. WE ARE NOT AWARE OF ANY CHANGES OR REVISIONS TO THESE PLANS DURING CONSTRUCTION EXCEPT AS NOTED ON THE PLANS.



**LINE "W-2"**  
**16" WATERLINE PLAN & PROFILE**  
**HICKORY RIDGE, PHASE ONE**  
 CITY OF ROCKWALL  
 ROCKWALL COUNTY, TEXAS

BENCHMARKS: CITY OF ROCKWALL, TEXAS, CONTROL MONUMENT #929. TOP OF HEADWALL IN NORTHWEST CORNER OF BRIDGE OVER SQUABBLE CREEK. SOUTHWESTERLY SIDE OF FM 205. ELEV = 524.55  
 SQUARE CUT ON TOP OF HEADWALL AT THE MOST NORTHERLY CORNER OF BRIDGE. NORTHEASTERLY SIDE OF FM 205. 1680' NORTHWEST OF CL OF MIMS ROAD. ELEV = 529.11

THESE CONSTRUCTION PLANS WERE PREPARED UNDER THE RESPONSIBLE SUPERVISION OF DAN M. DOWDEY REGISTERED PROFESSIONAL ENGINEER No. 21433  
 DAN M. DOWDEY 21433 REGISTERED PROFESSIONAL ENGINEER

THE SEAL APPEARING ON THIS DOCUMENT WAS AUTHORIZED BY DAN M. DOWDEY P.E.#21433

NO.	DATE	BY	REVISION

**DOWDEY, ANDERSON & ASSOCIATES, INC.**  
 5225 VILLAGE CREEK DR., STE. 200 (972) 931-0694 PLANO, TEXAS

DESIGN	DRAWN	CHECKED	DATE	SCALE	JOB	SHEET
DD	RR	DD	09-00	H: 1"=40' V: 1"=4'	99066	2 / 2